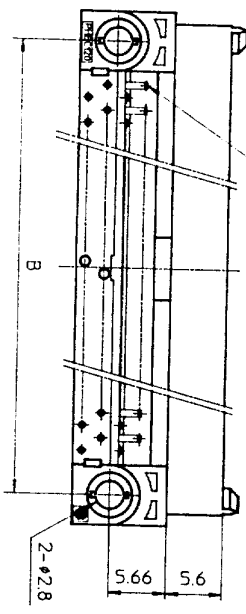
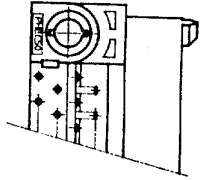


NO. OF CONTACTS : 40,60,68,80,100,120  
CRITERION PIN



NO. OF CONTACTS : 30,34,50



DRAWING NO.  
JSC 90736

SCREW NUT  
M2.6

PHEC\_P-R212

PHEC\_P-R210

RECOMMENDED PC BOARD  
THICKNESS : 1.6 ± 0.2

HOLE PATTERN (COMPONENT SIDE)

NO. OF CONTACTS : 40,60,68,80,100,120

n : NO. OF CONTACTS

TOLERANCES  
UNLESS OTHERWISE SPECIFIED : ±0.3

CAT. NO.	NO. OF CONTACTS (MATING SIDE)	DIMENSIONS				
		A	B	C	D	E
PHEC30P-R21	15/ROW X 2 ROWS	32.67	26.67	30.3	20.42	17.78
PHEC34P-R21	17/ROW X 2 ROWS	35.21	29.21	32.84	22.96	20.32
PHEC40P-R21	20/ROW X 2 ROWS	39.02	33.02	36.65	26.77	24.13
PHEC50P-R21	25/ROW X 2 ROWS	45.37	39.37	43	33.12	30.48
PHEC60P-R21	30/ROW X 2 ROWS	51.72	45.72	49.35	39.47	36.83
PHEC68P-R21	34/ROW X 2 ROWS	56.8	50.8	54.43	44.55	41.91
PHEC80P-R21	40/ROW X 2 ROWS	64.42	58.42	62.05	52.17	49.53
PHEC100P-R21	50/ROW X 2 ROWS	77.12	71.12	74.75	64.87	62.23
PHEC120P-R21	60/ROW X 2 ROWS	89.82	83.82	87.45	77.57	74.93

MATERIAL : NYLON RESIN GLASS REINFORCED (UL94V-0)  
BODY : BLACK  
LOCATOR : PBT RESIN GLASS REINFORCED (UL94V-0)  
COLOR : BLACK

CONTACT : COPPER ALLOY  
MOUNTING LATCH : PHOSPHOR BRONZE  
SCREW NUT : STEEL  
NICKEL PLATED

CONTACT PLATING TABLE  
(THICKNESS : μm)

CONTACT AREA	REMAINDER
GOLD 0.25 MIN. OVER NICKEL 3Z	SOLDER OVER NICKEL

PRINTED CIRCUIT CONNECTOR

CAT. NO.  
PHEC\_P-R21

DRAWING NO.  
JSC 90736

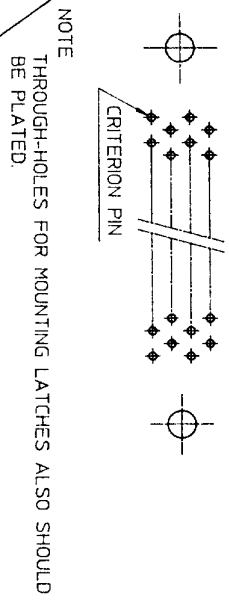
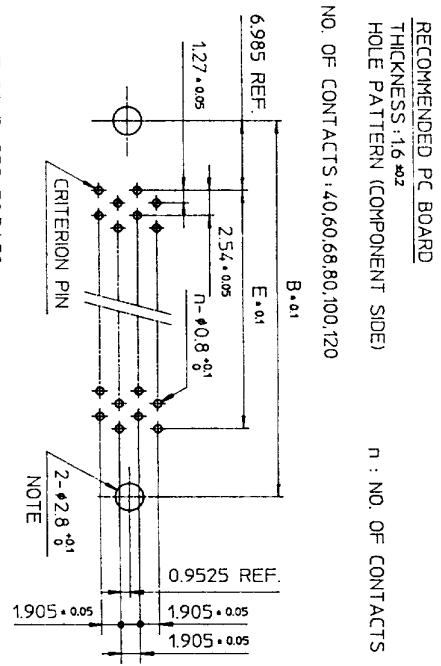
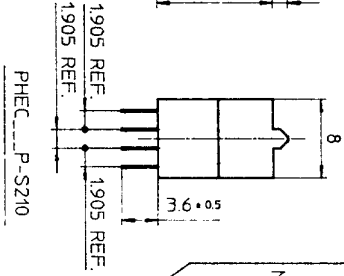
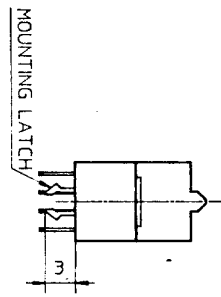
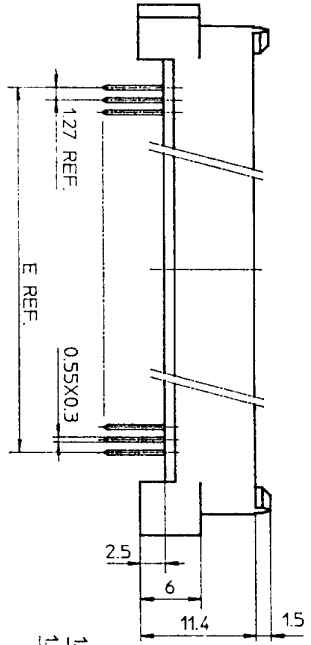
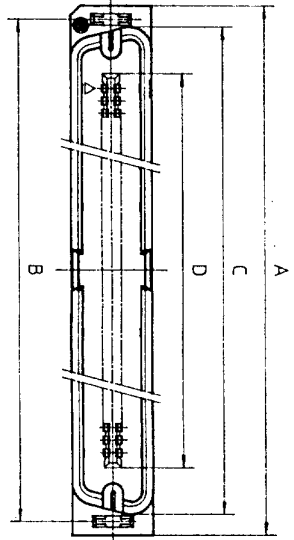
**BURNDY**  
JAPAN Ltd.

DESIGNED  
DRAWN *M. Oba*  
CHECKED *4.8/8*  
APPROVED *J. Ogasawara*  
DATE Mar. 8, 1990

SCALE  
DIM. IN  
MATERIAL

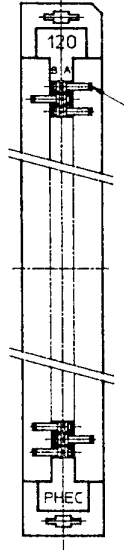
REV	DATE	DESCRIPTION	CHKD
92	8-14	30,34,50,68 POSITIONS ADDED. LOCATOR MATERIAL ADDED.	
2	6-7	EC 7866	
1	4-20	EC 7837	

CP-FHLC 02

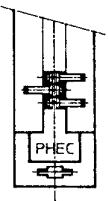


TOLERANCES UNLESS OTHERWISE SPECIFIED: ±0.3

NO. OF CONTACTS: 40,60,68,80,100,120



NO. OF CONTACTS: 30,34,50



MATERIAL

INSULATOR: NYLON RESIN GLASS REINFORCED (UL94V-0)  
COLOR: BLACK

CONTACT: COPPER ALLOY

MOUNTING LATCH: PHOSPHOR BRONZE  
SOLDER PLATED

CAT. NO.	NO. OF CONTACTS (MATING SIDE)	DIMENSIONS				
		A	B	C	D	E
PHEC30P-S21L	15/ROW X 2 ROWS	34.55	31.75	30.3	20.42	17.78
PHEC34P-S21L	17/ROW X 2 ROWS	37.09	34.29	32.84	22.96	20.32
PHEC40P-S21L	20/ROW X 2 ROWS	40.9	38.1	36.65	26.77	24.13
PHEC50P-S21L	25/ROW X 2 ROWS	47.25	44.45	4.3	33.12	30.48
PHEC60P-S21L	30/ROW X 2 ROWS	53.6	50.8	49.35	39.47	36.83
PHEC68P-S21L	34/ROW X 2 ROWS	58.68	55.88	54.43	44.55	41.91
PHEC80P-S21L	40/ROW X 2 ROWS	66.3	63.5	62.05	52.17	49.53
PHEC100P-S21L	50/ROW X 2 ROWS	79.0	76.2	74.75	64.87	62.23
PHEC120P-S21L	60/ROW X 2 ROWS	91.7	88.9	87.45	77.57	74.93

CONTACT PLATING TABLE [THICKNESS: μm]

CONTACT AREA	REMAINDER
GOLD 0.25 MIN	SOLDER
OVER NICKEL 3.2 OVER NICKEL	

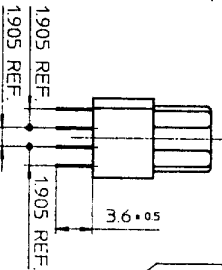
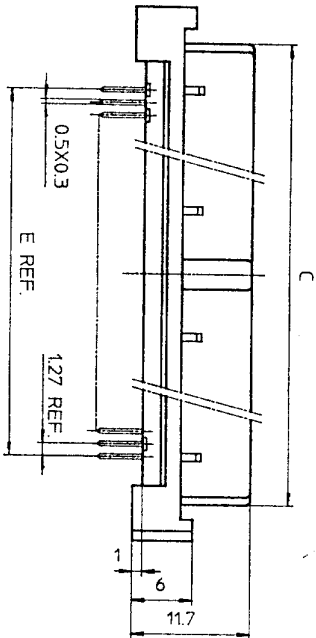
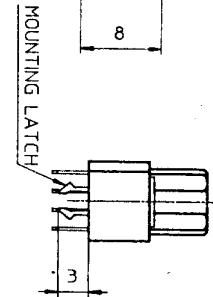
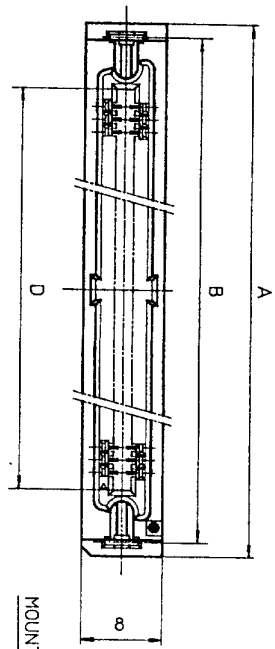
PRINTED CIRCUIT CONNECTOR	
CAT. NO.	PHEC_P-S21L
DRAWING NO.	JSC 90735
REV	3
<b>BURNDY JAPAN, Ltd.</b>	

DESIGNED	
DRAWN	M. Oba
CHECKED	A. Eb
APPROVED	J. Nagasawa
DATE	Mar. 8, 1990

SCALE	
DIM. IN	mm
MATERIAL	

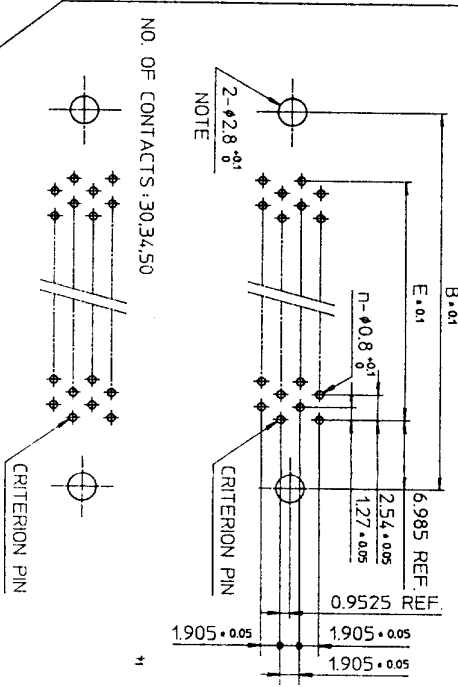
REV	DATE	DESCRIPTION	CHKD
3	'92-8-11	30,34,50,68 POSITIONS ADDED.	JK
2	'90-6-5	EC 7866	JK
1	'90-4-20	EC 7837	JK
REFERENCE			

DRAWING NO. JSC 90735



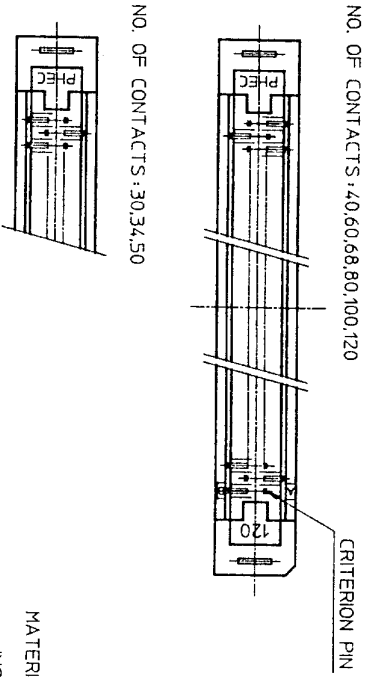
PHEC...R-S210

RECOMMENDED PC BOARD  
THICKNESS: 1.6 ± 0.2  
HOLE PATTERN (COMPONENT SIDE)  
NO. OF CONTACTS: 40, 60, 68, 80, 100, 120  
n : NO. OF CONTACTS



NOTE  
THROUGH-HOLES FOR MOUNTING LATCHES ALSO SHOULD BE PLATED.

TOLERANCES  
UNLESS OTHERWISE SPECIFIED: ±0.3



CAT. NO.	NO. OF CONTACTS (MATING SIDE)	DIMENSIONS				
		A	B	C	D	E
PHEC30R-S21	15/ROW X 2 ROWS	34.55	31.75	27.26	21.26	17.78
PHEC34R-S21	17/ROW X 2 ROWS	37.09	34.29	29.8	23.8	20.32
PHEC40R-S21	20/ROW X 2 ROWS	40.9	38.1	33.61	27.61	24.13
PHEC50R-S21	25/ROW X 2 ROWS	47.25	44.45	39.96	33.96	30.48
PHEC60R-S21	30/ROW X 2 ROWS	53.6	50.8	46.31	40.31	36.83
PHEC68R-S21	34/ROW X 2 ROWS	58.68	55.88	51.39	45.39	41.91
PHEC80R-S21	40/ROW X 2 ROWS	66.3	63.5	59.01	53.01	49.53
PHEC100R-S21	50/ROW X 2 ROWS	79.0	76.2	71.71	65.71	62.23
PHEC120R-S21	60/ROW X 2 ROWS	91.7	88.9	84.41	78.41	74.93

MATERIAL

INSULATOR: PBT RESIN GLASS REINFORCED (UL-94V-0)  
COLOR: BLACK

CONTACT: PHOSPHOR BRONZE  
MOUNTING LATCH: PHOSPHOR BRONZE  
SOLDER PLATED

CONTACT PLATING TABLE

CONTACT AREA	REMAINDER	SOLDER
GOLD 0.25 MIN. OVER NICKEL 3.2		OVER NICKEL

DRAWING NO. JSC 90737

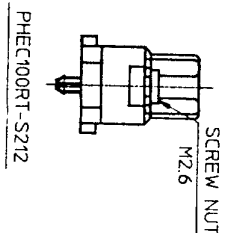
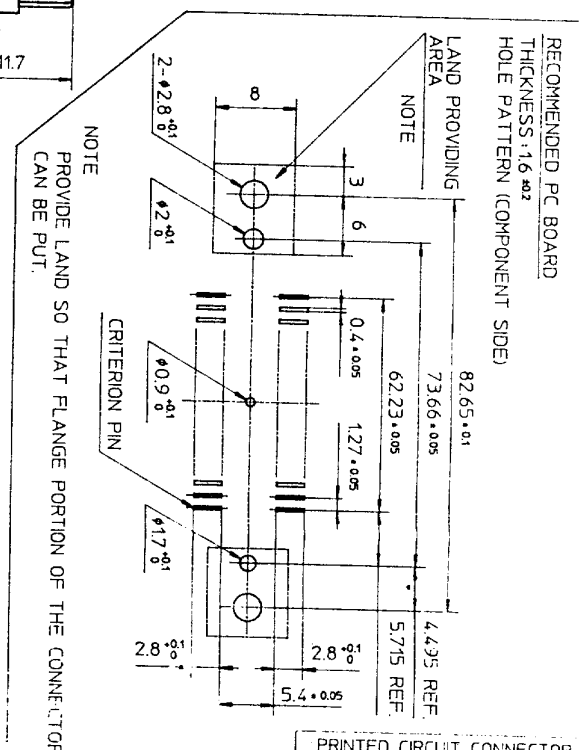
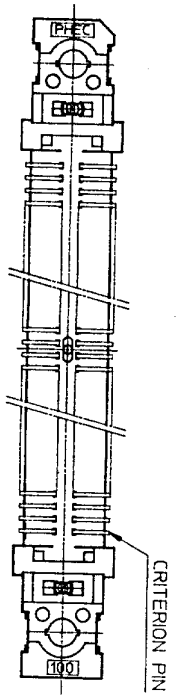
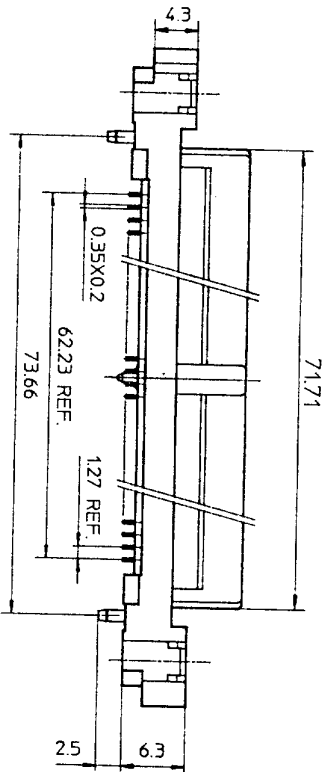
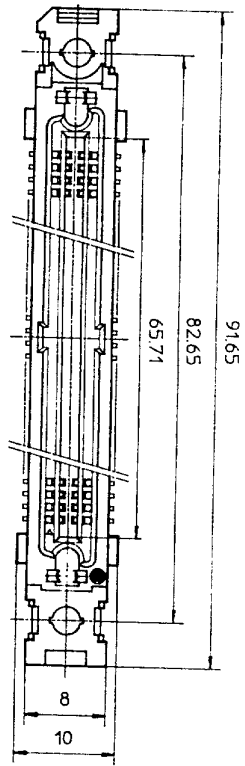
PRINTED CIRCUIT CONNECTOR  
CAT. NO. PHEC...R-S21  
DRAWING NO. JSC 90737  
REV 4  
**BURNDY JAPAN, Ltd.**

DESIGNED  
DRAWN *M. Oba*  
CHECKED *A. Oh*  
APPROVED *J. Nakagishi*  
DATE Mar. 8, 1990

SCALE  
DIM IN MM  
MATERIAL

REV. DATE	DESCRIPTION	CKD
4-93	WRONG CONTACT DIM. CORRECTED.	
1-29	30,34,50,68 POSITIONS ADDED	<i>no S.P</i>
3-8-11	EC 7866	<i>no JK</i>
2-5-30	EC 7837	<i>no JK</i>
1-4-20		





TOLERANCES  
UNLESS OTHERWISE SPECIFIED: ±0.3

MATERIAL  
INSULATOR: PPS RESIN GLASS REINFORCED (UL94V-0)  
COLOR: BLACK  
CONTACT: PHOSPHOR BRONZE  
SCREW NUT: STAINLESS  
NO. OF CONTACTS: 50/ROW X 2 ROWS (MATING SIDE)

CONTACT PLATING TABLE

CONTACT AREA	REMAINDER	THICKNESS (μm)
GOLD 0.25 MIN	SOLDER	
OVER NICKEL 3.2	OVER NICKEL	

PRINTED CIRCUIT CONNECTOR  
SURFACE MOUNT TYPE

CAT. NO. PHEC100RT-S21L

DRAWING NO. JSC 91839 REV. 0

**BURNDY**  
JAPAN, Ltd.

DESIGNED: [Signature]  
DRAWN: [Signature]  
CHECKED: A. [Signature]  
APPROVED: [Signature]  
DATE: Aug. 11, 1992

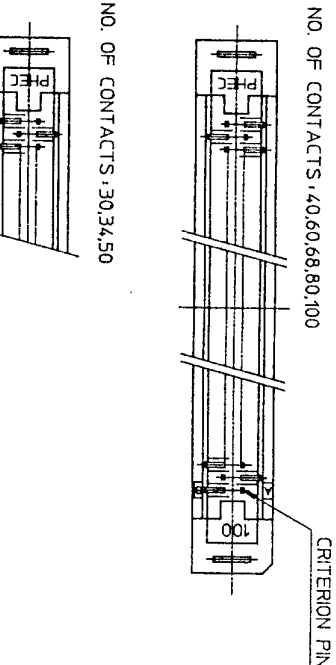
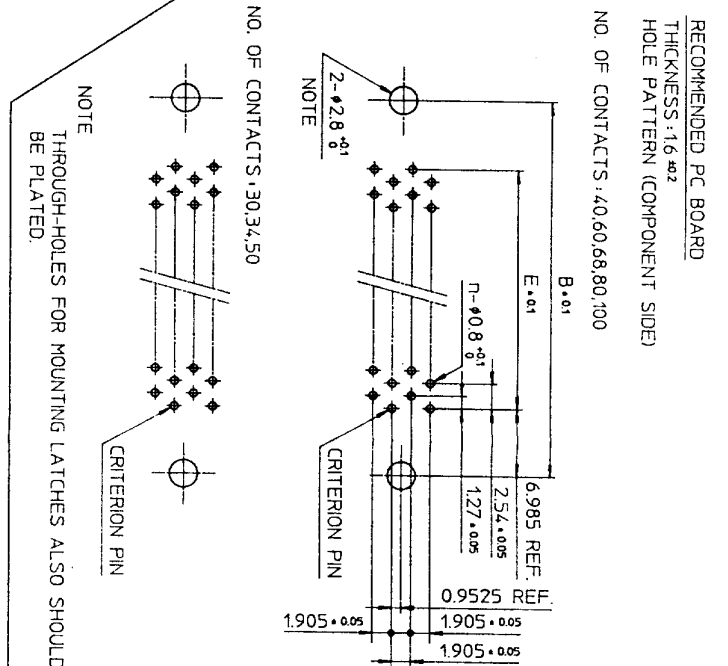
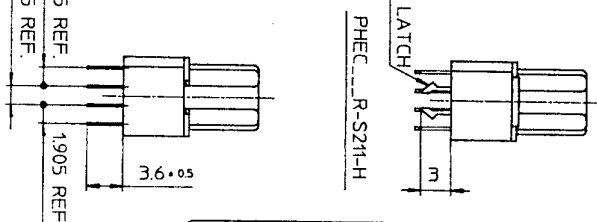
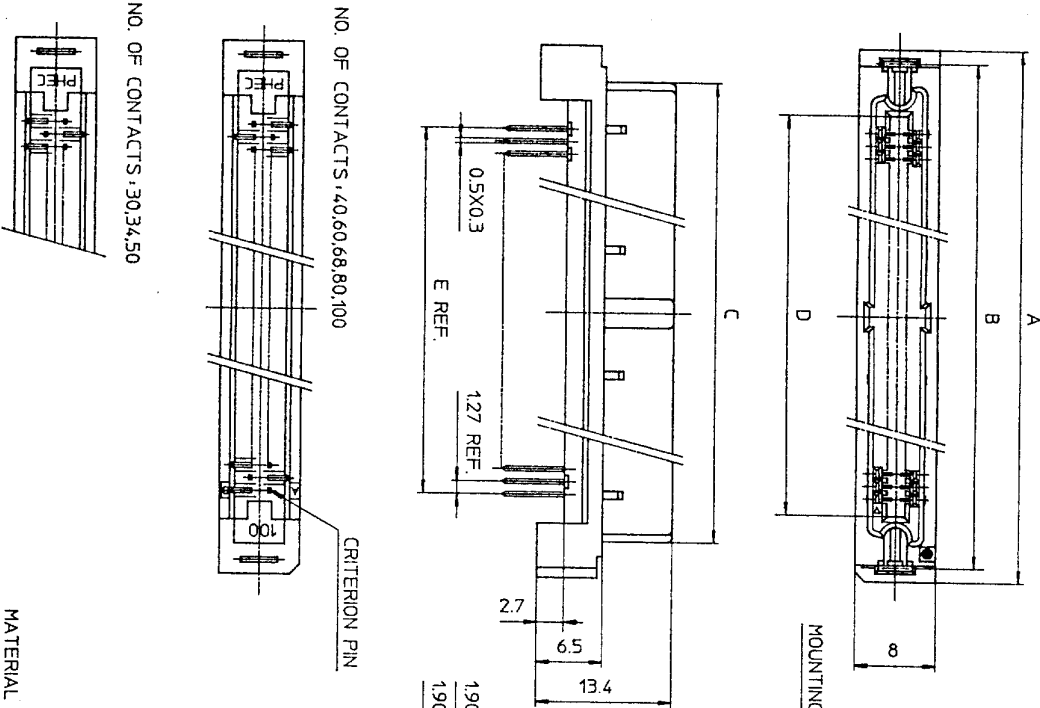
SCALE: 1:1  
DIM. IN: mm  
MATERIAL:

REV.	DATE	DESCRIPTION	CHKD.

REFERENCE:

DRAWING NO. JSC 91839

DRAWING NO. JSC 90752



CAT. NO.	NO. OF CONTACTS (MATING SIDE)	DIMENSIONS				
		A	B	C	D	E
PHEC30R-S21-H	15/ROW X 2 ROWS	34.55	31.75	27.26	21.26	17.78
PHEC34R-S21-H	17/ROW X 2 ROWS	37.09	34.29	29.8	23.8	20.32
PHEC40R-S21-H	20/ROW X 2 ROWS	40.9	38.1	33.61	27.61	24.13
PHEC50R-S21-H	25/ROW X 2 ROWS	47.25	44.45	39.96	33.96	30.48
PHEC60R-S21-H	30/ROW X 2 ROWS	53.6	50.8	46.31	40.31	36.83
PHEC68R-S21-H	34/ROW X 2 ROWS	58.68	55.88	51.39	45.39	41.91
PHEC80R-S21-H	40/ROW X 2 ROWS	66.3	63.5	59.01	53.01	49.53
PHEC100R-S21-H	50/ROW X 2 ROWS	79.0	76.2	71.71	65.71	62.23

MATERIAL

INSULATOR : PBT RESIN GLASS REINFORCED (UL94V-0)

COLOR : BLACK

CONTACT : PHOSPHOR BRONZE

MOUNTING LATCH : PHOSPHOR BRONZE  
SOLDER PLATED

CONTACT PLATING TABLE

CONTACT AREA	REMAINDER
GOLD 0.25 MIN	SOLDER
OVER NICKEL 3.2	OVER NICKEL

TOLERANCES UNLESS OTHERWISE SPECIFIED, ±0.3

NOTE THROUGH-HOLES FOR MOUNTING LATCHES ALSO SHOULD BE PLATED.

REV	DATE	DESCRIPTION	CHKD.
5	93-6-22	100 POSITIONS ADDED.	M.O
4	93-2-1	WRONG CONTACT DIM. CORRECTED.	5.9
3	92-8-11	100,120 POSITIONS DELETED. 30,34,50,68 POSITIONS ADDED.	5.9
2	90-5-30	DIM. CHANGED (36.61 → 33.61)	5.9
1	90-5-14	EC 7866	HE

SCALE  
DIM. IN  
MATERIAL

DESIGNED  
DRAWN  
CHECKED  
APPROVED  
DATE Mar. 24, 1990

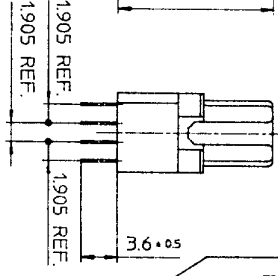
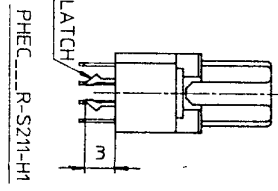
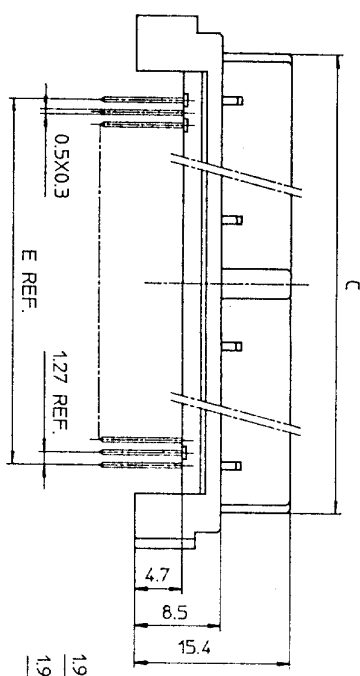
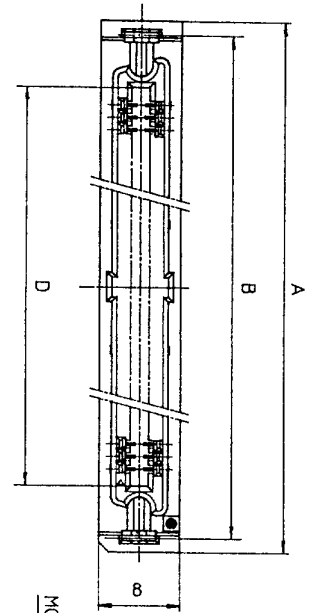
PRINTED CIRCUIT CONNECTOR  
HIGH STAND OFF TYPE

CAT. NO. PHEC...R-S21-H

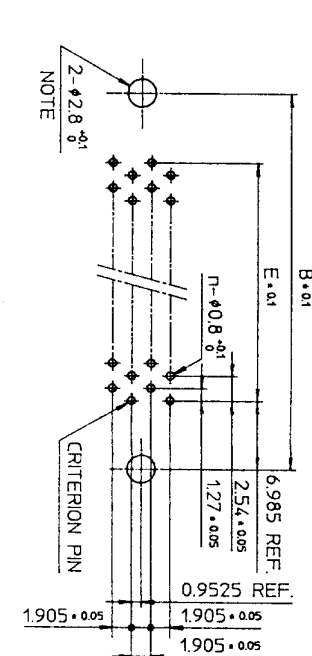
DRAWING NO. JSC 90752

REV 5

**BURNDY JAPAN, Ltd.**

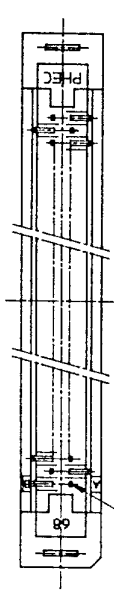


RECOMMENDED PC BOARD  
THICKNESS: 1.6 ±0.2  
HOLE PATTERN (COMPONENT SIDE)  
NO. OF CONTACTS: 40,60,68

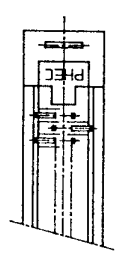


NOTE  
THROUGH-HOLES FOR MOUNTING LATCHES ALSO SHOULD BE PLATED.  
CRITERION PIN

NO. OF CONTACTS: 40,60,68



NO. OF CONTACTS: 30,34,50



CAT. NO.	NO. OF CONTACTS (MATING SIDE)	DIMENSIONS				
		A	B	C	D	E
PHEC30R-S21-H1	15/ROW X 2 ROWS	34.55	31.75	27.26	21.26	17.78
PHEC34R-S21-H1	17/ROW X 2 ROWS	37.09	34.29	29.8	23.8	20.32
PHEC40R-S21-H1	20/ROW X 2 ROWS	40.9	38.1	33.61	27.61	24.13
PHEC50R-S21-H1	25/ROW X 2 ROWS	47.25	44.45	39.96	33.96	30.48
PHEC60R-S21-H1	30/ROW X 2 ROWS	53.6	50.8	46.31	40.31	36.83
PHEC68R-S21-H1	34/ROW X 2 ROWS	58.68	55.88	51.39	45.39	41.91

TOLERANCES  
UNLESS OTHERWISE SPECIFIED: ±0.3

MATERIAL

INSULATOR: PBT RESIN GLASS REINFORCED (UL94V-0)  
COLOR: BLACK  
CONTACT: PHOSPHOR BRONZE  
MOUNTING LATCH: PHOSPHOR BRONZE  
SOLDER PLATED

CONTACT PLATING TABLE  
(THICKNESS: μm)

CONTACT AREA	REMAINDER
GOLD 0.25 MIN. OVER NICKEL 3.2	SOLDER OVER NICKEL

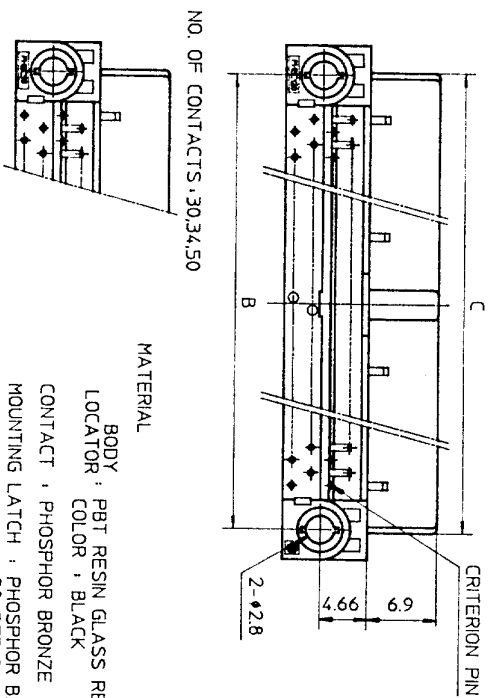
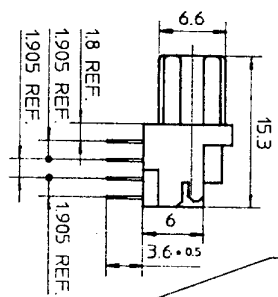
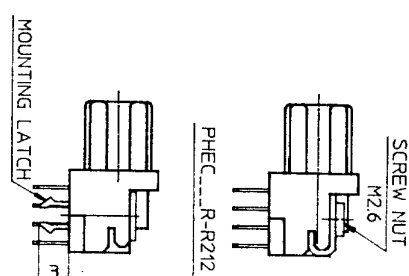
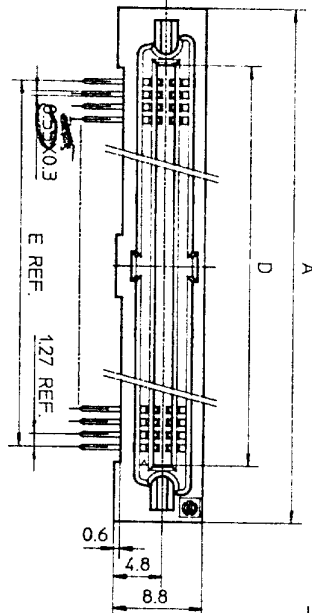
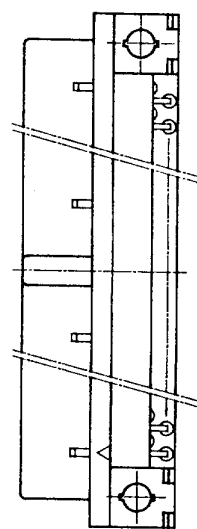
DRAWING NO. JSC 91840

PRINTED CIRCUIT CONNECTOR  
HIGH STAND OFF TYPE  
CAT. NO. PHEC...R-S21-H1  
DRAWING NO. JSC 91840  
REV. 1  
**BURNDY JAPAN, Ltd.**

DESIGNED  
DRAWN *M. Oba*  
CHECKED A. Matsuo  
APPROVED *S. Ito*  
DATE Aug. 17, 1992

SCALE 1:1  
DIM IN mm  
MATERIAL

REV	DATE	DESCRIPTION	CKD
1	93	WRONG CONTACT DIM. CORRECTED.	
2	91		

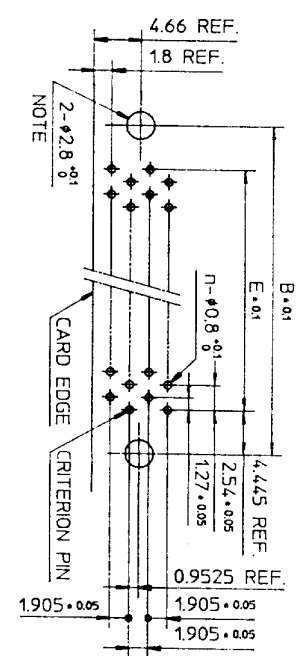


CAT. NO.	NO. OF CONTACTS (MATING SIDE)	DIMENSIONS				
		A	B	C	D	E
PHEC30R-R21	15/ROW X 2 ROWS	32.67	26.67	27.26	21.26	17.78
PHEC34R-R21	17/ROW X 2 ROWS	35.21	29.21	29.8	23.8	20.32
PHEC40R-R21	20/ROW X 2 ROWS	39.02	33.02	33.61	27.61	24.13
PHEC50R-R21	25/ROW X 2 ROWS	45.37	39.37	39.96	33.96	30.48
PHEC60R-R21	30/ROW X 2 ROWS	51.72	45.72	46.31	40.31	36.83
PHEC68R-R21	34/ROW X 2 ROWS	56.8	50.8	51.39	45.39	41.91
PHEC80R-R21	40/ROW X 2 ROWS	64.42	58.42	59.01	53.01	49.53
PHEC100R-R21	50/ROW X 2 ROWS	77.12	71.12	71.71	65.71	62.23
PHEC120R-R21	60/ROW X 2 ROWS	89.82	83.82	84.41	78.41	74.93

CONTACT PLATING TABLE  
(THICKNESS: μm)

CONTACT AREA	REMAINDER
GOLD 0.25 MIN.	SOLDER
OVER NICKEL 3.2	OVER NICKEL

RECOMMENDED PC BOARD  
THICKNESS: 1.6 ±0.2  
HOLE PATTERN (COMPONENT SIDE)  
NO. OF CONTACTS: 40,60,68,80,  
100,120



NOTE  
THROUGH-HOLES FOR MOUNTING LATCHES ALSO SHOULD BE PLATED.  
CRITERION PIN  
TOLERANCES UNLESS OTHERWISE SPECIFIED: ±0.3

DRAWING NO.  
JSC 90738

MATERIAL  
BODY: PBT RESIN GLASS REINFORCED (UL94V-0)  
LOCATOR COLOR: BLACK  
CONTACT: PHOSPHOR BRONZE  
MOUNTING LATCH: PHOSPHOR BRONZE  
SCREW NUT: STEEL  
NICKEL PLATED

REV. DATE	DESCRIPTION	CKD	SCALE	DESIGNED	PRINTED CIRCUIT CONNECTOR
3	30,34,50,68 POSITIONS ADDED.	1.2	DIM. IN mm	M. Osa	CAT. NO. PHEC...R-R21
2	EC 7866	2.0	MATERIAL	CHECKED	DRAWING NO. JSC 90738
1	EC 7837	2.0		APPROVED	REV. 3
REFERENCE				DATE	BURNDY JAPAN, Ltd.