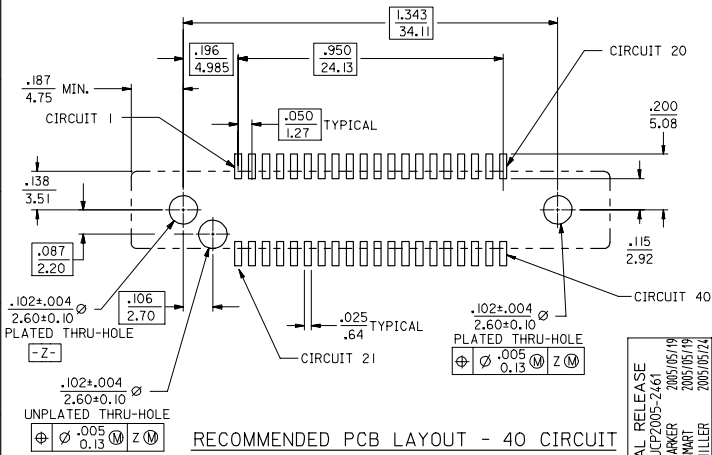
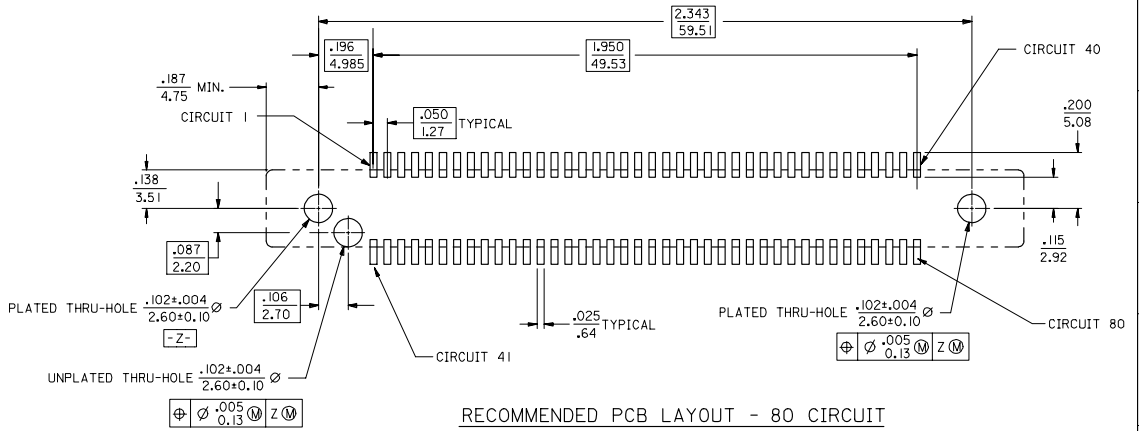


- NOTES:
- MATERIAL:
HOUSING: I.R. COMPATIBLE POLYMER, GLASS FILLED, UL 94 V O, BLACK
TERMINALS: COPPER ALLOY
BOARDLOCK: COPPER ALLOY
 - FINISH:
TERMINALS: 30 MICRONS / 0.76 MICROMETERS GOLD IN CONTACT AREA
100 MICRONS / 2.54 MICROMETERS TIN IN TAIL AREA
NICKEL UNDERPLATE OVERALL,
ESD BOARDLOCK: TIN OVER NICKEL OVERALL.
 - PRODUCT SPECIFICATION: PS-73826-0000
 - FOUR DIGIT DATE CODE IN THIS LOCATION (WK YR).
 - CONTACT GAP WILL ACCOMMODATE MATING CONNECTOR OF:
.063+/-0.003 / 1.60+/-0.08
 - PACKAGE PER SPECIFICATION PK-70873-5025.
 - CIRCUIT NUMBERS 1,36 THRU 43,45,46, AND 75 THRU 80, ARE ADVANCED (LONG) TERMINALS FOR SEQUENTIAL MATING.
 - COPLANARITY TO BE MEASURED USING FIXTURE # 71743-9001 OR EQUIVALENT. MEASUREMENT TO BE TAKEN AT 50X MAGNIFICATION. COPLANARITY IS THE DISTANCE BETWEEN THE SEATING PLANE AND THE LOWEST POINT ON THE SMT TAIL THAT IS FARTHEST AWAY FROM THE SEATING PLANE. FIXTURING TO BE SUCH THAT ALL TAILS ARE OVER THE SEATING PLANE.

INITIAL RELEASE EC NO: UCP2005-2461 DRAWN BY: 7005/05/19 CHKD BY: SMART 7005/05/19 APPR: SMILLER 7005/05/24	QUALITY SYMBOLS ▽=0 ▽=0	GENERAL TOLERANCES (UNLESS SPECIFIED)		DIMENSION STYLE IN/MM		SCALE 1:1	DESIGN UNITS INCH	THIRD ANGLE PROJECTION	
		4 PLACES ± --- ± ---	3 PLACES ± --- ± .005	2 PLACES ± 0.13 ± .010	1 PLACE ± 0.25 ± ---	mm	INCH	SALES DRAWING - ASSEMBLY EBBI VERTICAL RECEPTACLE SMT SCA-2 CONNECTOR	
REV A	DESCRIPTION	DRAFT WHERE APPLICABLE MUST REMAIN WITHIN DIMENSIONS		SEE CHART		MATERIAL NO. SD-71743-005		DOCUMENT NO. SD-71743-005	
		DRAFT WHERE APPLICABLE MUST REMAIN WITHIN DIMENSIONS		SEE CHART		MATERIAL NO. SD-71743-005		DOCUMENT NO. SD-71743-005	
REV A		DESCRIPTION		MATERIAL NO. SD-71743-005		DOCUMENT NO. SD-71743-005		SHEET NO. 1 OF 2	

	13	12	11	10	9	8	7	6	5	4	3	2	1
	MATERIAL NUMBER		CIRCUIT SIZE	DIMENSION A	DIMENSION B	DIMENSION C	DIMENSION D	ADVANCED TERMINALS / CIRCUITS (SECTION Z-Z, SHEET 1)					
J	71743-4180		80	2.717/69.01	2.343/59.51	2.168/55.07	2.025/51.44	1, 36, 37, 38, 39, 40, 41, 42, 43, 45, 46, 75, 76, 77, 78, 79, 80					
	71743-4140		40	1.717/43.61	1.343/34.11	1.168/29.67	1.025/26.04	21, 22, 23, 26, 29, 32, 35, 36, 37, 38, 39, 40					



INITIAL RELEASE EC NO: UCP2005-2461 DRAWN BY: BBARKER 2005/05/19 CHKD BY: SMART 2005/05/19 APPR: MILLER 2005/05/24	QUALITY SYMBOLS ▽=0 ▽=0	GENERAL TOLERANCES (UNLESS SPECIFIED)		DIMENSION STYLE IN/MM		SCALE 4:1	DESIGN UNITS INCH	THIRD ANGLE PROJECTION	
		4 PLACES ± --- ± ---	3 PLACES ± --- ± .010	2 PLACES ± .025 ± ---	1 PLACE ± --- ± ---	DRAWN BY BBARKER	DATE 05/04/25	TITLE SALES DRAWING - ASSEMBLY EBBI VERTICAL RECEPTACLE SMT SCA-2 CONNECTOR	
REV A	DESCRIPTION	ANGULAR ±1/2°		APPROVED BY MILLER		DATE 05/04/25	MATERIAL NO. SD-71743-005		
		DRAFT WHERE APPLICABLE MUST REMAIN WITHIN DIMENSIONS		SEE CHART		DOCUMENT NO. SD-71743-005			SHEET NO. 2 OF 2