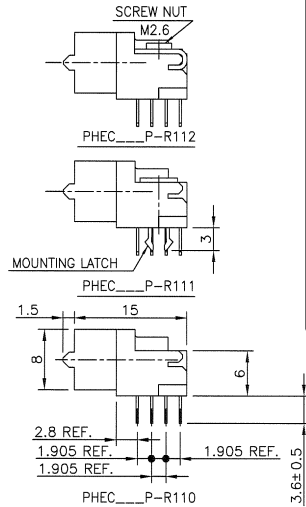
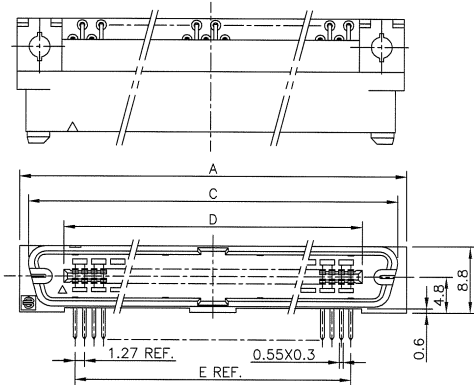
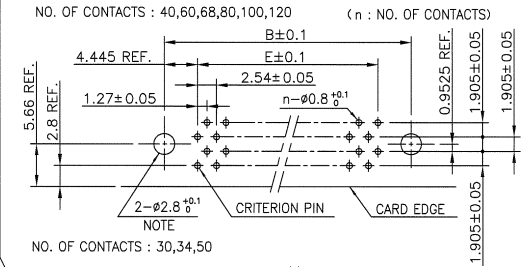


PRODUCT NO.

JSC 96358

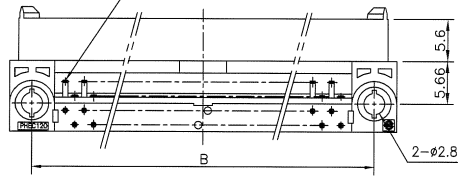


RECOMMENDED PC BOARD
THICKNESS : 1.6 ± 0.2
HOLE PATTERN (COMPONENT SIDE)

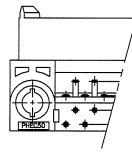


NOTE : THROUGH-HOLES FOR MOUNTING LATCHES ALSO SHOULD BE PLATED.

NO. OF CONTACTS : 40,60,68,80,100,120
CRITERION PIN



NO. OF CONTACTS : 30,34,50



CAT. NO.	NO. OF CONTACTS (MATING SIDE)	DIMENSIONS				
		A	B	C	D	E
PHEC30P-R11_LF	15/ROW X 2 ROWS	32.67	26.67	30.30	20.42	17.78
PHEC34P-R11_LF	17/ROW X 2 ROWS	35.21	29.21	32.84	22.96	20.32
PHEC40P-R11_LF	20/ROW X 2 ROWS	39.02	33.02	36.65	26.77	24.13
PHEC50P-R11_LF	25/ROW X 2 ROWS	45.37	39.37	43.00	33.12	30.48
PHEC60P-R11_LF	30/ROW X 2 ROWS	51.72	45.72	49.35	39.47	36.83
PHEC68P-R11_LF	34/ROW X 2 ROWS	56.80	50.80	54.43	44.55	41.91
PHEC80P-R11_LF	40/ROW X 2 ROWS	64.42	58.42	62.05	52.17	49.53
PHEC100P-R11_LF	50/ROW X 2 ROWS	77.12	71.12	74.75	64.87	62.23
PHEC120P-R11_LF	60/ROW X 2 ROWS	89.82	83.82	87.45	77.57	74.93

NOTES

- BODY MATERIAL : NYLON GLASS FILLED (UL94V-0), COLOR BLACK
- TERMINAL MATERIAL : PHOSPHOR BRONZE
- MOUNTING LATCH MATERIAL : PHOSPHOR BRONZE
- LOCATOR MATERIAL : PBT GLASS FILLED
- SCREW NUT : STEEL
- TERMINAL FINISH
CONTACT AREA : GOLD FLASH 0.1 μm min. OVER NICKEL UNDERLAYER
SOLDER TAILS : PURE Sn 2 μm min. OVER NICKEL UNDERLAYER
- MOUNTING LATCH FINISH : PURE Sn 2 μm min. OVER NICKEL UNDERLAYER
- SCREW FINISH : NICKEL
- THIS PRODUCT MEETS EUROPEAN UNION DIRECTIVES AND OTHER COUNTRY REGULATIONS AS DESCRIBED IN GS-22-008
- THE HOUSING WILL WITHSTAND EXPOSURE TO 260 DEGREE PEAK TEMPERATURE FOR 10 SECONDS IN A WAVE SOLDER APPLICATION WITH A 1.6mm MINIMUM THICK CIRCUIT BOARD.

mat'l. code	---	surface	ISO 1302	tolerance	ISO 406	projection	product family	PHEC	CODE	JP
ltr	description	ecn no	dr	date	tolerances unless otherwise specified	MM	title	PRINTED CIRCUIT CONNECTOR (CAT.NO.PHEC ___ P-R11_LF)		
A	RELEASED	J05-0186	S.O	3/29/05	0.X ±0.3	MM	dwg no	sheet 1 of 1 size		
B	REVISED	J07-0047	S.O	1/25/07	0.XX ±0.3	MM	JSC 96358	A3		
C	REVISED	J07-0458	S.O	9/11/07	0.XXX ±0.3	scale N/A	type	Customer Drawing		
dr	S.OKUDAIRA	3/29/05								
enrg	S.OKUDAIRA	9/11/07								
chr	R. BISHOP	9/11/07								
appd	R. BISHOP	9/11/07								
sheet	revision	C								
index	sheet	1								