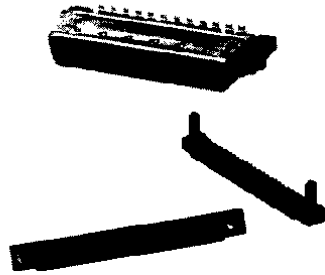




# AMPLIMITE Subminiature D Type Connectors (Continued)

## AMPLIMITE .050 Series Cable Plug Connectors, Series III

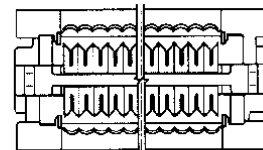
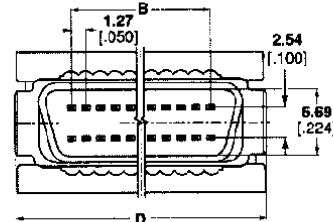
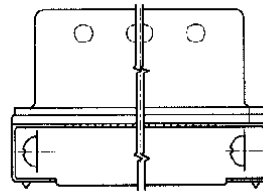
### Shielded Plugs



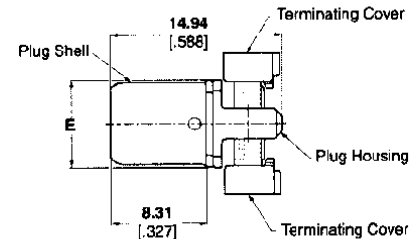
Shielded Plug with Unassembled Standard Termination Covers



Shielded Plug with Assembled Standard Termination Covers



Shielded Plug with Assembled or Unassembled Standard Termination Covers



### Materials:

#### Housing and Covers —

Thermoplastic, 94V-0 rated, black

**Contacts** — Phosphor bronze, duplex plated 0.00076 (.000030) min. gold on mating end, in-lead on termination end, all underplated nickel

**Shell** — Steel, plated tin-nickel alloy over nickel over copper

#### Recommended wire size<sup>3</sup> —

28 AWG [0.08-0.09mm<sup>2</sup>] or 30 AWG [0.05mm<sup>2</sup>], solid or 7 strand, with a 0.74-0.89 [.029-.036] insulation diameter.

### Technical Documents:

**Product Specifications** — 108-1228

**Application Specifications** — 114-40029

**Instruction Sheet** — 408-9427

### Connectors With Standard Termination Covers

No. of Pos.	Dimensions			Part Numbers	
	B	D	E	Assembled Covers	Unassembled Covers
40	24.13 .950	33.76 1.329	7.44 .293	—	749621-4
50	30.48 1.200	40.11 1.579	7.44 .293	749111-4	749621-5
68	41.91 1.650	51.54 2.029	7.44 .293	749111-5	749621-7
80	49.53 1.950	59.16 2.329	9.47 .373	—	749621-8
100	62.23 2.450	71.86 2.829	9.47 .373	—	749621-9

- Notes:**
1. Plug connector requires backshell kit for complete assembly and must use round jacketed cable (discrete or laminated). Refer to pages 502-504 for backshell kit part numbers.
  2. For termination tooling, see page 501.
  3. The CHAMPOMATOR 2.5 Automatic Termination Machine will accept diameters as low as 0.58 [.023].

Input/Output

Parallel Applications