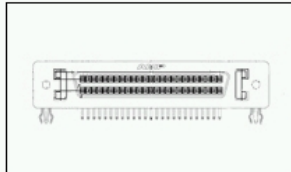
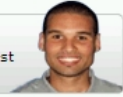


## 787082-2 Product Details

### Have a Question?

Chat with a Product Information Specialist



**787082-2**

TE Internal Number: 787082-2

Active

### .050 Series Board Mount Connectors

[5 of 6 EU RoHS/ELV Compliant](#) ([Find RoHS Compliant Alternates/Statement of Compliance](#))

#### Product Highlights:

- Connector
- Housing Gender = Receptacle
- 26 Positions
- Right Angle Mount Angle
- Through Hole Contact Termination Type

[View all Features](#)

### Quick Links

- ▶ [Check Pricing & Availability](#)
- ▶ [Search for Tooling](#)
- ▶ [Product Feature Selector](#)
- ▶ [Contact Us About This Product](#)

[Add to My Part List](#)
[Request Sample](#)
[Find Similar Products](#)
[Buy Product](#)

### Documentation & Additional Information

Documents are temporarily unavailable. We are working hard to correct the problem. Please try again later.

#### Additional Information:

- [Product Line Information](#)

#### Additional Product Images:

- [Panel Cutout](#)

#### Related Products:

- [Tooling](#)

### Product Features (Please use the Product Drawing for all design activity)

#### Product Type Features:

- [Product Type](#) = Connector
- Mount Angle = Right Angle
- PCB Mount Retention = With
- [PCB Mount Polarization](#) = Without
- [Shell Type](#) = Full Metal
- [Product Series](#) = Series III
- Shell Material = Steel
- Bracket Material = Zinc

#### Mechanical Attachment:

- Mating Alignment = Without
- Mating Retention Type = Latch Blocks
- Bracket Plating = Nickel over Copper
- Boardlock Material = Copper Alloy
- Boardlock Plating = Tin-Lead over Nickel

#### Electrical Characteristics:

- [Shielded](#) = Yes

#### Termination Related Features:

- [Termination Post Length \(mm \[in\]\)](#) = 2.84 [0.112]

#### Body Related Features:

- [Number of Positions](#) = 26
- PCB Mount Retention Type = Boardlock(s)
- Mating Retention = With
- Centerline (mm [in]) = 1.27 [0.050]
- Post Plating = Tin Lead over Nickel
- Shell Plating = Tin over Copper

#### Contact Related Features:

- [Contact Termination Type](#) = Through Hole
- [Contact Plating, Mating Area, Material](#) = Gold (30), Gold Flash over Palladium Nickel
- Contact Base Material = Phosphor Bronze

#### Housing Related Features:

- Housing Gender = Receptacle
- Housing Material = Thermoplastic - GF
- UL Flammability Rating = UL 94V-0

#### Industry Standards:

- [RoHS/ELV Compliance](#) = ELV compliant, 5 of 6 Compliant
- [Lead Free Solder Processes](#) = Not suitable for lead free processing

#### Conditions for Usage:

- PCB Thickness, Recommended (mm [in]) = 1.57 [0.062]

#### Other:

- Brand = AMP



### Corporate Information

[Who We Are](#)  
[Investors](#)  
[News Room](#)  
[Supplier Portal](#)  
[Careers](#)

### Quick Links

[Check Distributor Inventory](#)  
[Cross Reference](#)  
[Find Documents & Drawings](#)  
[Product Compliance Support Center](#)  
[Site Map](#)

### Customer Support

[Email or Chat with Us](#)  
[Find a Phone Number](#)  
[Search Knowledge Base](#)  
[Manage Your Account](#)

### Sign up for our eNewsletter

Enter your email address

Follow us on: