

TERMINATIONS

SMA, up to 18 GHz, 2 Watts

SPECIFICATIONS:

Models: 3004M, 3004F, 3004MC, 3004FC

RoHS
Compliant

AEROFLEX
A passion for performance.

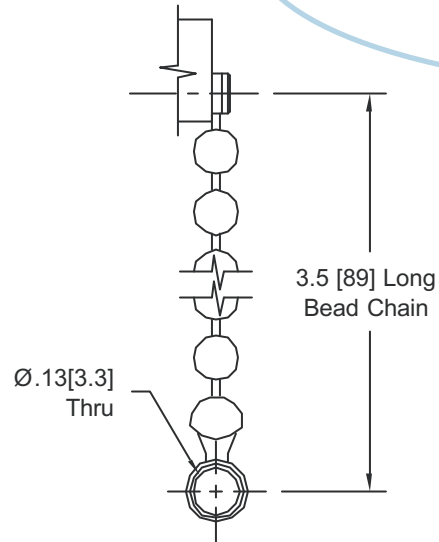
Electrical:

Frequency Range _____	DC - 18 GHz
Standard Freq. Values _____	6** & 18 GHz
VSWR	
DC - 4 GHz _____	1.15:1 Max.
4 - 8 GHz _____	1.20:1 Max.
8 - 12.4 GHz _____	1.25:1 Max.
12.4 - 18 GHz _____	1.30:1 Max.
Impedance _____	50 Ohms
Input Power _____	2 Watts Avg. @ +25°C
	<small>Derated Linearly to 1 Watt @ +125°C</small>
Peak Power _____	250 Watts Max.
	<small>(5uSec Pulse, .05% Duty Cycle)</small>
Temperature Coefficient _____	±250 ppm/°C
Operating Temp Range _____	-65°C to +125°C

Mechanical:

SMA Connectors _____	Passivated Stainless Steel
<small>Mates with MILSTD-348</small>	
Conductors _____	Gold Plated Beryllium Copper
Bead Chain _____	Passivated Stainless Steel

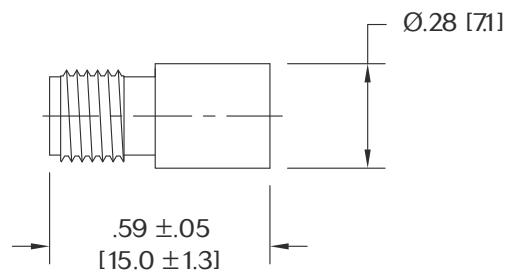
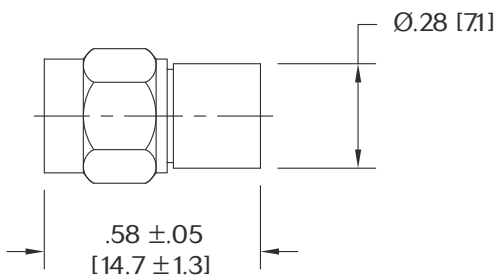
**For DC - 6 GHz Units add -067 to the Model Number



CHAIN DETAIL

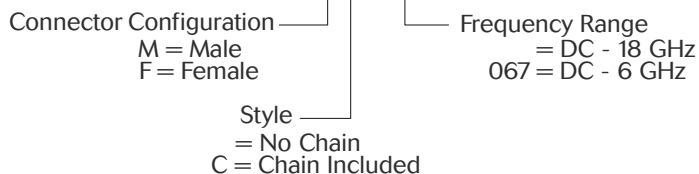
Model Number: 3004M
SMA Male Connector

Model Number: 3004F
SMA Female Connector



HOW TO ORDER:

Model Number: 3004XY-XXX



Ordering Examples:

Model Number: 3004MC
DC - 18 GHz; SMA Male; Chain Included

Model Number: 3004F-067
DC - 6 GHz; SMA Female; No Chain

Model Number: 3004M
DC - 18 GHz; SMA Male; No Chain

Note: Dimensions in Brackets are Expressed in Millimeters and are for Reference Only.
Design specifications are subject to change without notice.
Contact factory for technical specifications before purchasing or use.

3004: REV L



Aeroflex / Inmet, Inc. 300 Dino Drive, Ann Arbor, MI 48103 • U.S.A.
888-244-6638 or 734-426-5553 • FAX: 734-426-5557
www.aeroflex-inmet.com • inmet-sales@eroflex.com