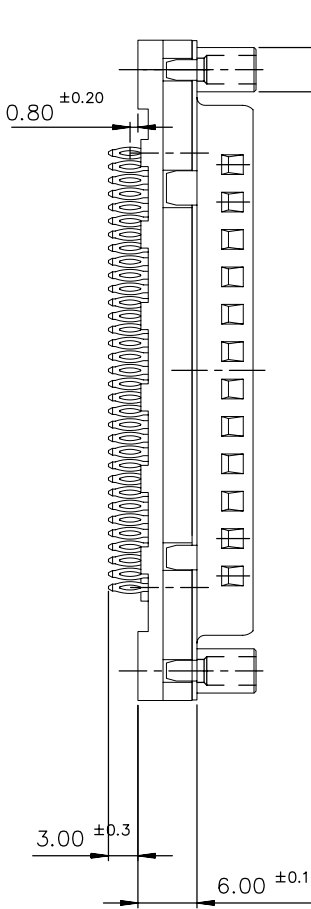
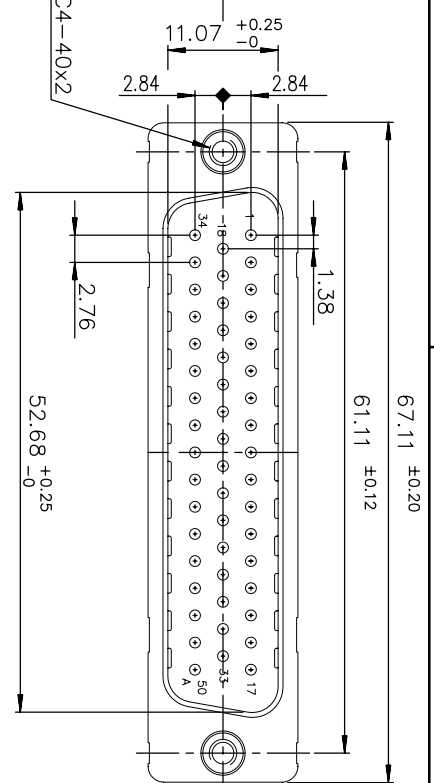
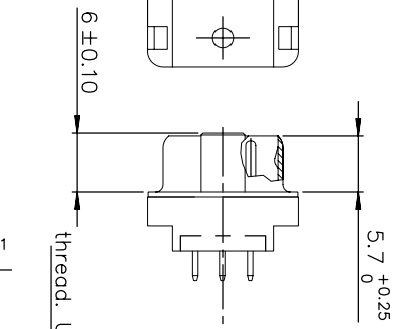
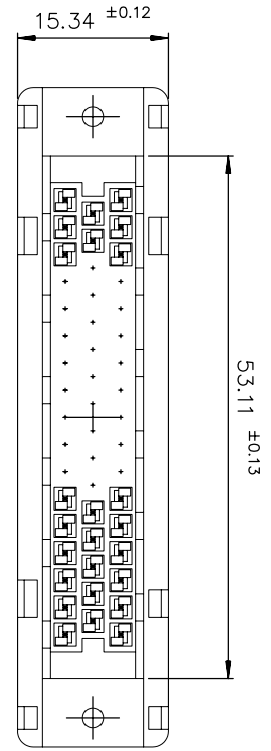




Copyright FCI.



REQUIREMENTS

- Technical characteristics:
- Shell: steel tin plated
- Insulators: self-extinguishing thermoplastic, UL class 94V0
- Contacts: phosphor bronze, gold (for thickness see table) over 2µ mini nickel on active area and flash to 1.5µ maxi Sn/SnPb over 1µ mini nickel on termination
- Cycles: 200 min for plating 4
- : 500 min for plating 6

PART NUMBER NON LF	PART NUMBER LF
flash gold	D50P91C4P.V00
0.76µ gold	D50P91C6P.V00
	D50P91C6P.V00LF

Accessories:

Female screwlock: brass, Ni plated, UNC 4.40 retention against torque 0.70N.m minimum

Electrical characteristics:

- max. current rating: 5A
- Test voltage: 1000V
- Rated voltage: 300V
- Shell resistance: ≤10mΩ
- Shell resistance: ≤5mΩ
- Insulation resistance: ≥5000MΩ

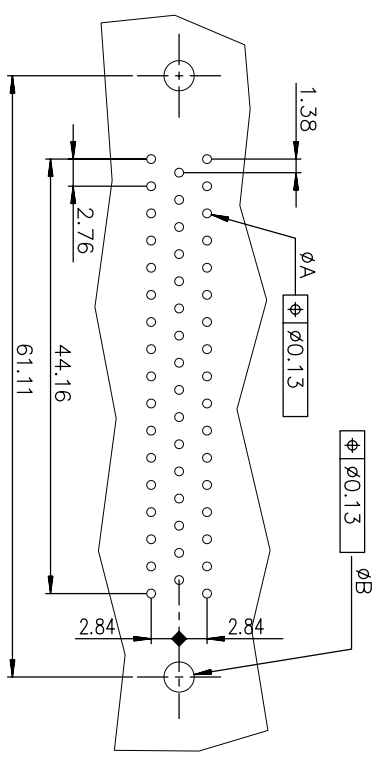
Climatic characteristics:

- Operating temperature range: -55°C +125°C

Dimensions: in accordance with MIL-C-24308B and DIN41652

PCB HOLE DEFINITION	
DRILLED HOLE	ØA
COPPER PLATING	ØB
TIN-LEAD PLATING	25µ mini
FINISHED HOLE AFTER REFLOW	5µ mini

rev	ech no	dr	date
A	-	JOU	1996/08/08
B	LS06-0140	LGO	2006/09/23
C	HT0-0055	NG	2009-02-19



PC board drilling dimensions (after plating - thickness: 1.60 to 3.20 mm)

Part number	SEE TABLE
-------------	-----------

www.fciconnect.com		surface	ISO 1302	tolerance std	ISO 406 ISO 1101	projection	mm
Dr	JOURBERT	1996-08-08	ANGULAR	LINEAR	0.X	±0.1	size
Eng	PESSON	1996-08-08	LINEAR	0.XX	±0.1	A3	Scale
Chr	NIRVAL GEORGE	2010-02-19	0.XX ±2	0.XXX	±0.1	110-0055	2
Appr	SUDHIR VARMA	2010-02-19	Product family	D-SUB	Spec ref	-	Scale

MALE CONNECTOR DELTA D 50-EUROPE	straight press fit-female 4-40 screw	Rev. C
C01-8646-0475	CUSTOMER	sheet 1 of 1

REV F - 2006-04-17

1 2 3 4