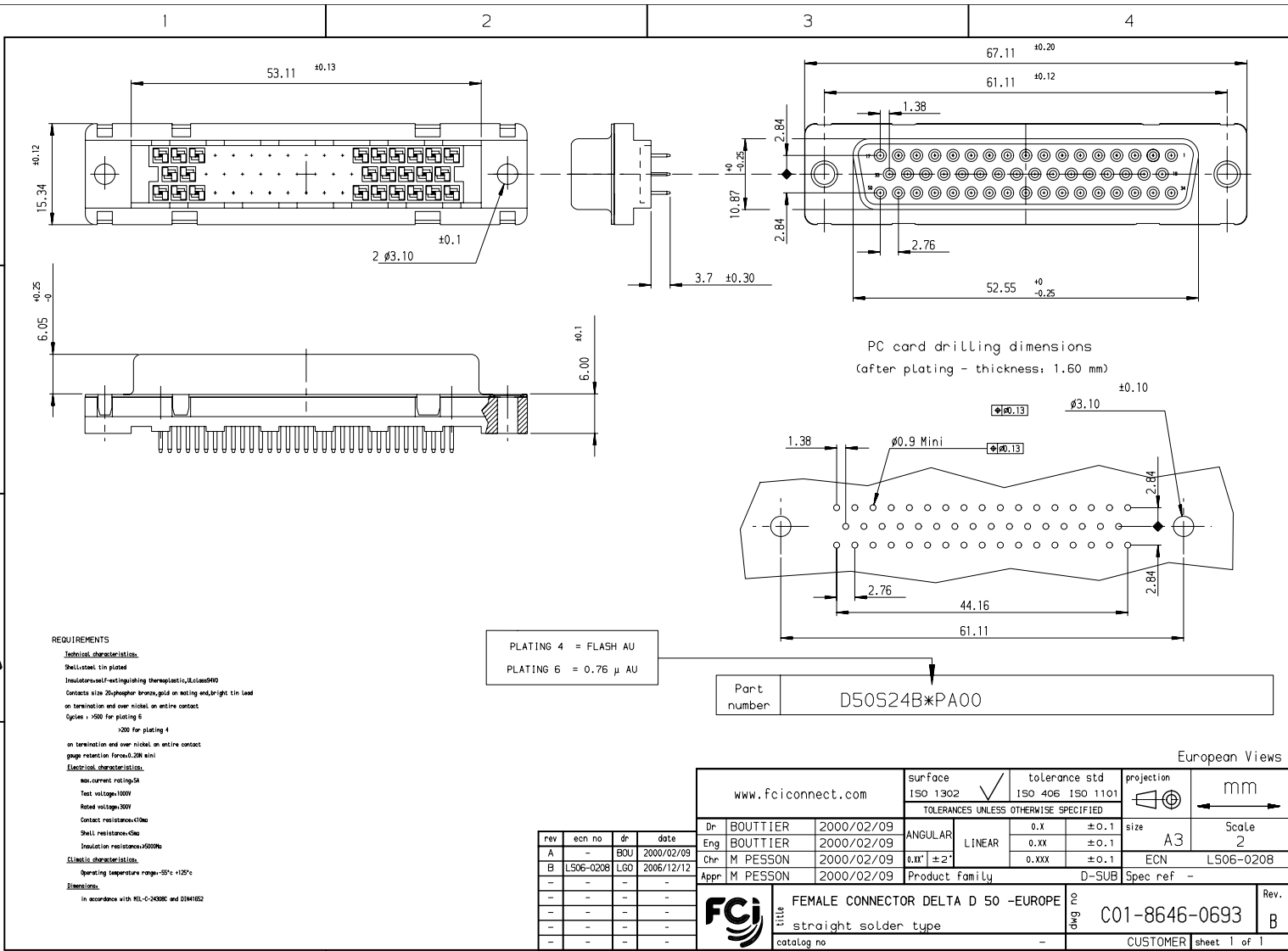


Copyright FCI.



PC card drilling dimensions
(after plating - thickness: 1.60 mm)

PLATING 4 = FLASH AU
PLATING 6 = 0.76 μ AU

Part number D50S24B*PA00

REQUIREMENTS
Technical characteristics:
 Shell: steel, tin plated
 Insulators: self-extinguishing thermoplastic, UL94V-0
 Contacts: size 26 phosphor bronze, gold on rolling end, bright tin lead on termination end over nickel on entire contact
 Cycles: > 500 for plating 6
 > 200 for plating 4
 on termination end over nickel on entire contact
 gauge retention force: 0.20N mini
Electrical characteristics:
 max. current rating: 5A
 Test voltage: 1000V
 Rated voltage: 200V
 Contact resistance: $10\text{m}\Omega$
 Shell resistance: $50\text{m}\Omega$
 Insulation resistance: > 5000M $\Omega</math>
 climatic characteristics:
 Operating temperature range: -55° to +125°C
Dimensions:
 in accordance with MIL-C-24308C and D38918/2$

rev	ecn no	dr	date
A	-	BOU	2000/02/09
B	LS06-0208	LGO	2006/12/12
-	-	-	-
-	-	-	-
-	-	-	-
-	-	-	-

www.fciconnect.com		surface ISO 1302	tolerance std ISO 406 ISO 1101	projection mm
Dr BOUTTIER 2000/02/09		TOLERANCES UNLESS OTHERWISE SPECIFIED		size A3
Eng BOUTTIER 2000/02/09		ANGULAR	0.X ±0.1	Scale 2
Chr M PESSON 2000/02/09		LINEAR	0.XX ±0.1	ECN LS06-0208
Appr M PESSON 2000/02/09		0.XX' ±2'	0.XXX ±0.1	Product family D-SUB Spec ref -
FCI		FEMALE CONNECTOR DELTA D 50 -EUROPE		Rev. B
title straight solder type		drawing no C01-8646-0693		CUSTOMER sheet 1 of 1
catalog no		D-SUB		

REV F - 2006-04-17

PDM: Rev:B STATUS: Released Printed: Feb 23, 2007