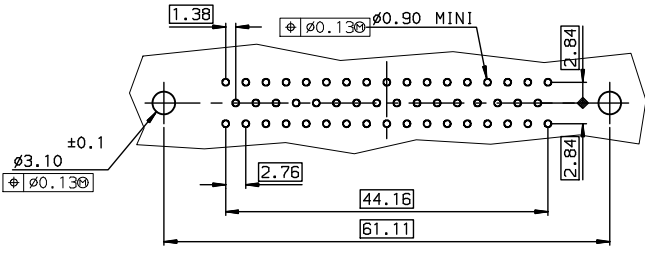


PC CARD DRILLING DIMENSIONS
Thickness 1.6 mm



TIN LEAD PART NUMBER

Part number D50524A*PX00

Plating: 4 --> Flash AU
Plating: 6 --> 0.76µ AU

LEAD FREE PART NUMBER

Part number D50524A*PX00LF

Plating: 4 --> Flash AU
Plating: 6 --> 0.76µ AU

GENERAL CHARACTERISTICS AND ROHS INFORMATIONS:
SEE DRAWING C01-8646-0000

| rev | ecn no | dr | date |
|-----|----------|-----|------------|
| A | - | BOU | 1997/11/04 |
| B | LS05-001 | MPE | 2005/03/14 |
| C | LS06-005 | LGO | 2006/07/22 |
| - | - | - | - |
| - | - | - | - |
| - | - | - | - |

| | | | | |
|--|-----------------------|---------------------------------------|-----------------------------------|-----------------------|
| www.fcconnect.com | | surface ISO 1302 | tolerance std ISO 406 ISO 1101 | projection mm |
| Dr BOUTTIER 1997/11/04 | | TOLERANCES UNLESS OTHERWISE SPECIFIED | | size A3 |
| Eng PESSON 1997/11/04 | Chr LEGARE 1997/11/04 | ANGULAR | LINEAR | Scale 2 |
| Appr LEGARE 1997/11/04 | Product family | 0.x ±0.1 | 0.xx ±0.1 | ECN LS06-0095 |
| | | 0.x* ±2 | 0.xxx ±0.1 | Spec ref - |
| FCJ | | FEMALE CONNECTOR DELTA D 50-EUROPE | | Rev. C |
| title Straight solder, threaded insert | | C01-8646-0600 | | CUSTOMER sheet 1 of 1 |
| catalog no | | | | |

REV F - 2006-04-17