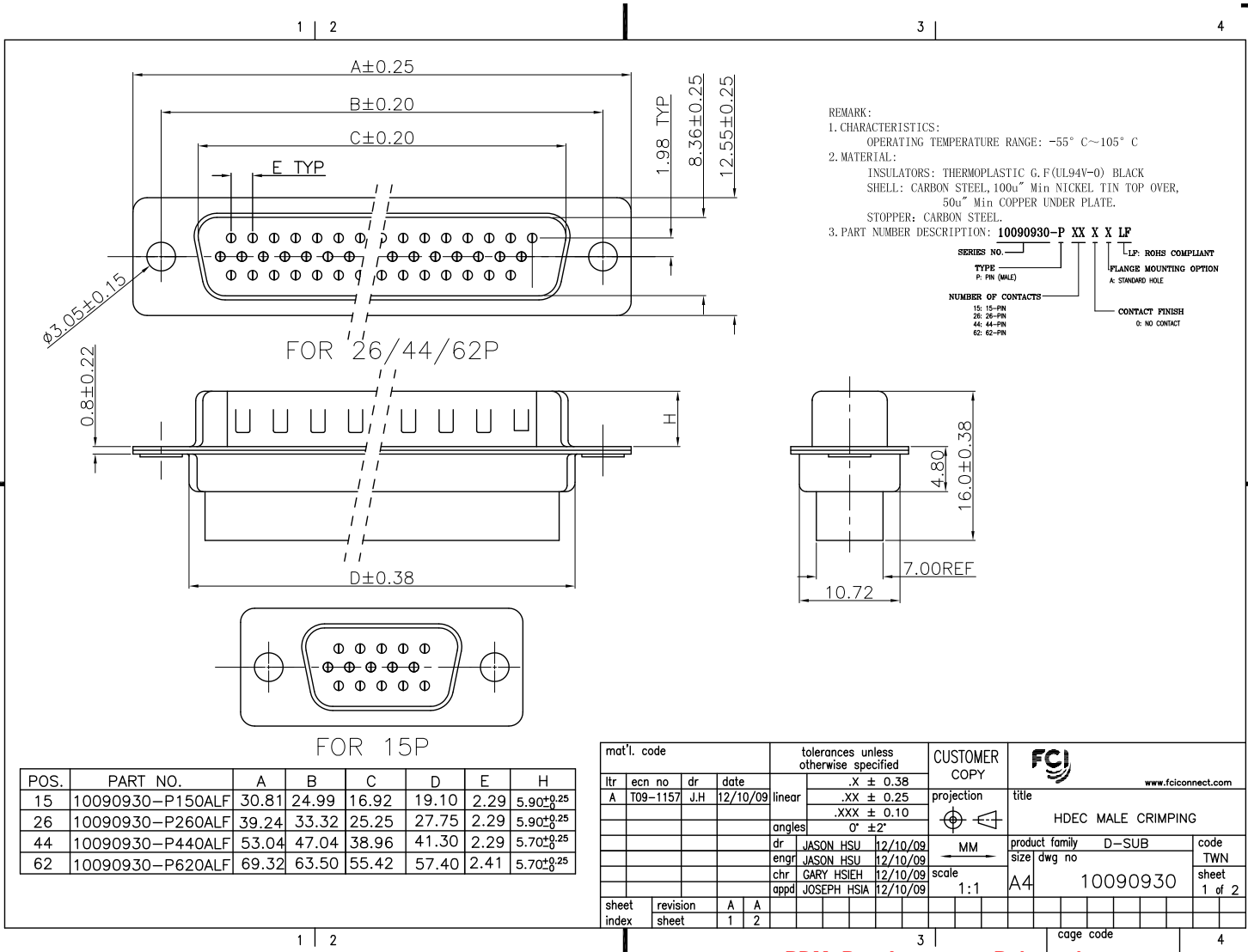


Tous droits strictement réservés. Reproduction ou communication a des tiers interdite sous quelque forme que ce soit sans autorisation écrite du propriétaire. Property of FCI. Droits de reproduction FCI.



All rights strictly reserved. Reproduction or issue to third parties in any form whatever is not permitted without written authority from the proprietor. Property of FCI. Copyright FCI.



REMARK:
 1. CHARACTERISTICS:
 OPERATING TEMPERATURE RANGE: -55° C~105° C
 2. MATERIAL:
 INSULATORS: THERMOPLASTIC G.F(UL94V-0) BLACK
 SHELL: CARBON STEEL, 100u" Min NICKEL TIN TOP OVER,
 50u" Min COPPER UNDER PLATE.
 STOPPER: CARBON STEEL.
 3. PART NUMBER DESCRIPTION: **10090930-P XX X X LF**

SERIES NO. _____
 TYPE _____
 P: PIN (MALE)
 NUMBER OF CONTACTS _____
 15: 15-PIN
 26: 26-PIN
 44: 44-PIN
 62: 62-PIN

LF: ROHS COMPLIANT
 PLANGE MOUNTING OPTION
 A: STANDARD HOLE
 CONTACT FINISH
 0: NO CONTACT

POS.	PART NO.	A	B	C	D	E	H
15	10090930-P150ALF	30.81	24.99	16.92	19.10	2.29	5.90 ^{+0.25} _{-0.25}
26	10090930-P260ALF	39.24	33.32	25.25	27.75	2.29	5.90 ^{+0.25} _{-0.25}
44	10090930-P440ALF	53.04	47.04	38.96	41.30	2.29	5.70 ^{+0.25} _{-0.25}
62	10090930-P620ALF	69.32	63.50	55.42	57.40	2.41	5.70 ^{+0.25} _{-0.25}

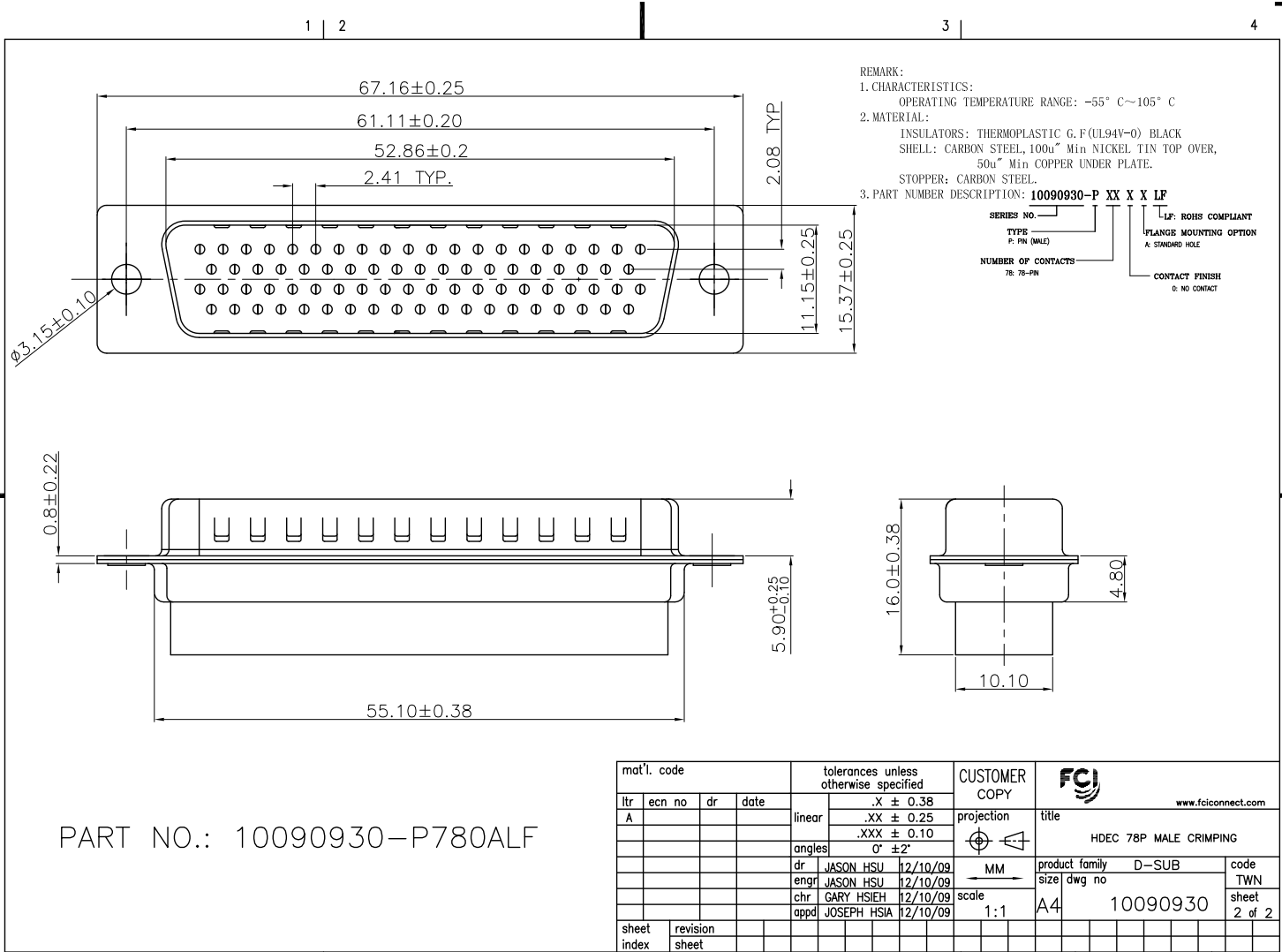
mat'l. code				tolerances unless otherwise specified		CUSTOMER COPY		FCI	
ltr	ecr no	dr	date	linear	.X ± 0.38	projection	title	www.fciconnect.com	
A	T09-1157	J.H	12/10/09		.XX ± 0.25		HDEC MALE CRIMPING	product family D-SUB	
				angles	.XXX ± 0.10			size	dwg no
				dr	0° ± 2°	MM	10090930	TWN	
				enrg		scale	1:1	sheet	1 of 2
				chr	JASON HSU 12/10/09				
				appd	JASON HSU 12/10/09				
					GARY HSIEH 12/10/09				
					JOSEPH HSIA 12/10/09				
sheet index	revision sheet	A	A						
		1	2						

ACAD PDM: Rev:A STATUS:Released Printed: Dec 24, 2009

Tous droits strictement réservés. Reproduction ou communication a des tiers interdite sous quelque forme que ce soit sans autorisation écrite du propriétaire. Property of FCJ. Droits de reproduction FCJ.



All rights strictly reserved. Reproduction or issue to third parties in any form whatever is not permitted without written authority from the proprietor. Property of FCJ. Copyright FCJ.



REMARK:
 1. CHARACTERISTICS:
 OPERATING TEMPERATURE RANGE: -55° C~105° C
 2. MATERIAL:
 INSULATORS: THERMOPLASTIC G. F (UL94V-0) BLACK
 SHELL: CARBON STEEL, 100u" Min NICKEL TIN TOP OVER,
 50u" Min COPPER UNDER PLATE.
 STOPPER: CARBON STEEL.
 3. PART NUMBER DESCRIPTION: **10090930-P XX X X LF**

SERIES NO. _____
 TYPE _____
 P: PIN (MALE) _____
 NUMBER OF CONTACTS: _____
 78: 78-PIN _____

LF: ROHS COMPLIANT
 A: STANDARD HOLE
 CONTACT FINISH
 0: NO CONTACT

PART NO.: 10090930-P780ALF

mat'l. code				tolerances unless otherwise specified				CUSTOMER COPY		FCJ		www.fcjconnect.com	
ltr	ecn no	dr	date	linear	.X ± 0.38	projection	title						
A					.XX ± 0.25		HDEC 78P MALE CRIMPING						
				angles	.XXX ± 0.10		product family	D-SUB		code			
				dr	0° ± 2°	MM	size	dwg no		TWN			
				enrg	JASON HSU 12/10/09	scale	A4	10090930		sheet			
				chr	GARY HSIEH 12/10/09	1:1			2 of 2				
				appd	JOSEPH HSIA 12/10/09								
sheet index	revision sheet									cage code			