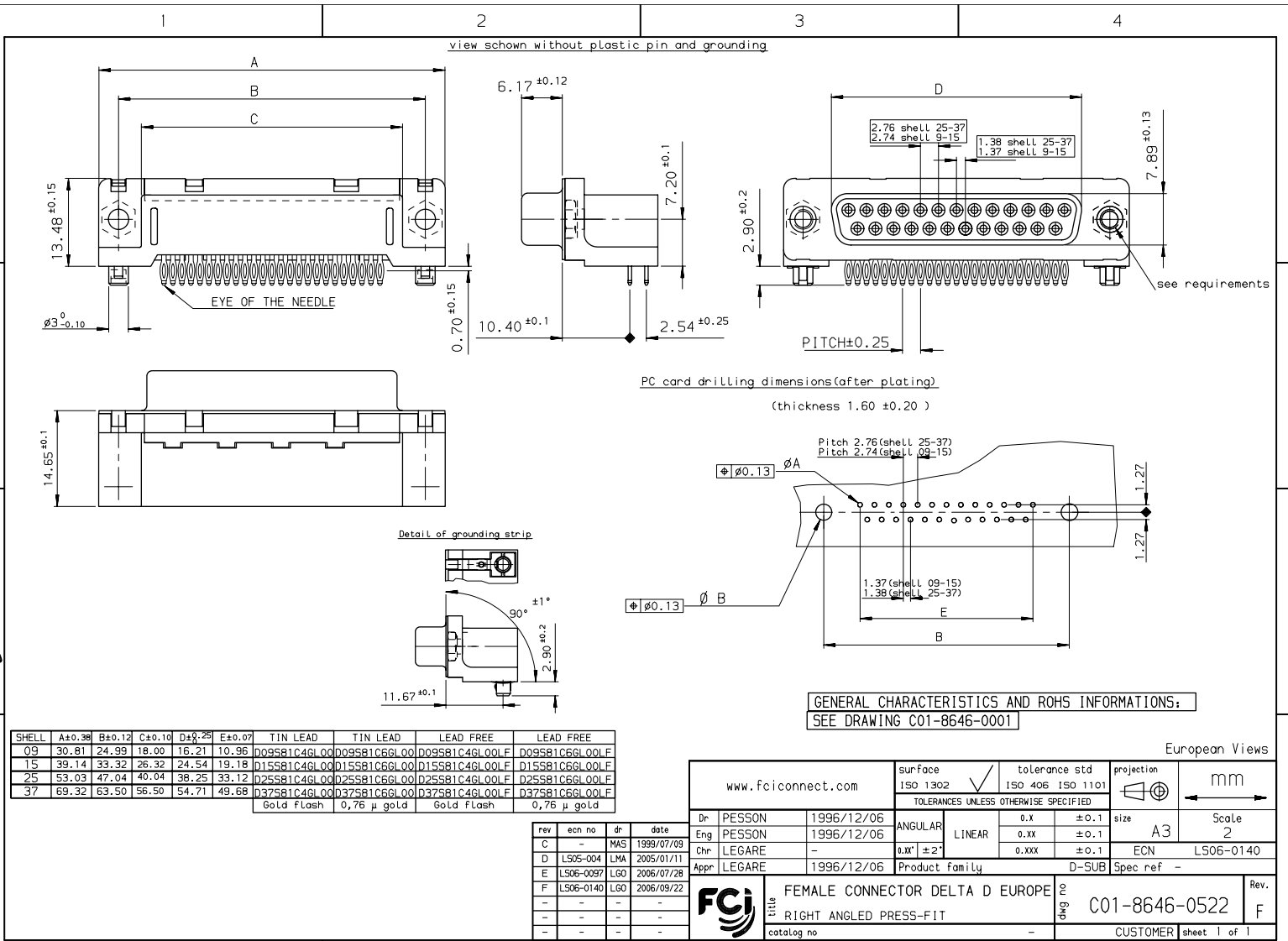


Copyright FCI.



SHELL	A±0.38	B±0.12	C±0.10	D±0.25	E±0.07	TIN LEAD	TIN LEAD	LEAD FREE	LEAD FREE
09	30.81	24.99	18.00	16.21	10.96	D09S81C46L00	D09S81C66L00	D09S81C46L00F	D09S81C66L00F
15	39.14	33.32	26.32	24.54	19.18	D15S81C46L00	D15S81C66L00	D15S81C46L00F	D15S81C66L00F
25	53.03	47.04	40.04	38.25	33.12	D25S81C46L00	D25S81C66L00	D25S81C46L00F	D25S81C66L00F
37	69.32	63.50	56.50	54.71	49.68	D37S81C46L00	D37S81C66L00	D37S81C46L00F	D37S81C66L00F

Gold Flash 0,76 µ gold Gold Flash 0,76 µ gold

rev	ecn no	dr	date
C	-	MAS	1999/07/09
D	LS06-004	LMA	2005/01/11
E	LS06-0097	LGO	2006/07/28
F	LS06-0140	LGO	2006/09/22

www.fciconnect.com		surface ISO 1302	tolerance std ISO 406 ISO 1101	projection mm
		TOLERANCES UNLESS OTHERWISE SPECIFIED		
Dr	PESSON	1996/12/06	ANGULAR	0.X ±0.1
Eng	PESSON	1996/12/06	LINEAR	0.XX ±0.1
Chr	LEGARE	-	0.XX ±2	0.XXX ±0.1
Appr	LEGARE	1996/12/06	Product family	D-SUB Spec ref -
FCI		title FEMALE CONNECTOR DELTA D EUROPE RIGHT ANGLED PRESS-FIT		Rev. F
catalog no		part no C01-8646-0522		CUSTOMER sheet 1 of 1

REV F - 2006-04-17

PDM: Rev:F STATUS Released Printed: Jan 18, 2011