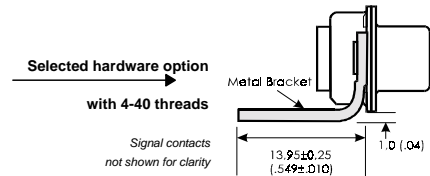
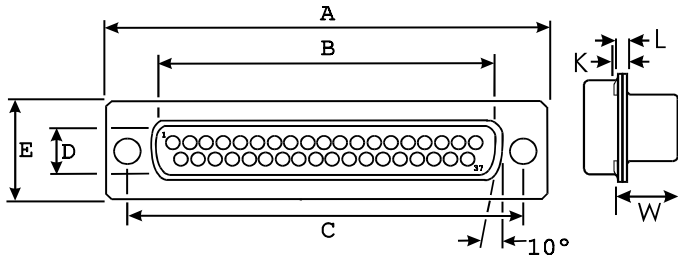
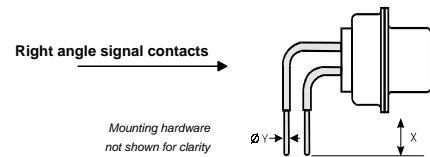
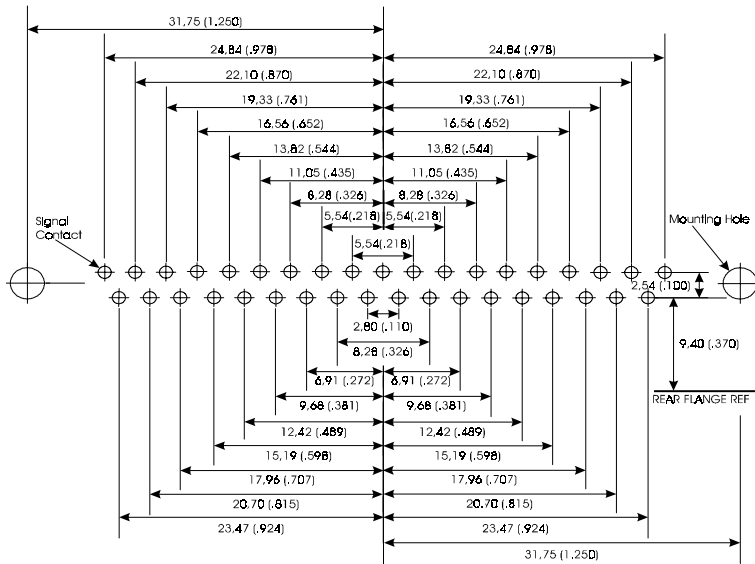


This is issued in strict confidence on condition that it is not used as a basis for manufacture or sale, and that it is not copied, reprinted or disclosed to a third party either wholly or in part without prior written consent of ITT Cannon.



A ± 0,38 (.015)	B ± 0,13 (.005)	C ± 0,13 (.005)	D ± 0,13 (.005)	E ± 0,38 (.015)	L ± 0,1 (.004)	W ± 0,25 (.012)	K ± 0,1 (.004)
69,32 (2.729)	55,42 (2.182)	63,50 (2.500)	8,36 (.329)	12,55 (.494)	1,0 (.040)	6,95 (.274)	1,35 (.053)



Signal contact diameter	Signal contact length from bottom of bracket
Y ± 0,4 (.002)	X ± 0,3 (.012)
0,64 (.025)	3,70 (.146)

PCB mounting hole Ø (2)	PCB Signal cont Ø (37)
3,05 (.120) ± 0,05 (.002)	1,05 (.041) ± 0,05 (.002)

DESCRIPTION	MATERIAL	FINISH
Insulator	Polyester	None, (Color Dark Green)
Shells	Steel	Tin, with grounding dimples
Signal Contacts	Copper alloy	Gold over Ni in mating area, Tin on balance
Brackets	Steel	Tin
Captive-Nuts	Steel	Tin

Unless otherwise specified, dimensions are in mm & (in.) Tolerances are (.XXX = mm) Decimals Angles X ± 0,20 (.008) X° ± 1,0° XX ± 0,10 (.004) XXX ± 0,05 (.002)	Issue Date: 24-Aug-99	Cannon	ITT Industries
	CONNECTOR, PLUG, ELECTRICAL		
	D-SUBMINIATURE 37 POSITION RIGHT ANGLE PCB		
PART NO.	<b>DC37P1A7NK87</b>		

NOTE: DO NOT MAKE ASSUMPTIONS REGARDING HOLE LOCATIONS, CHECK EACH DIMENSION