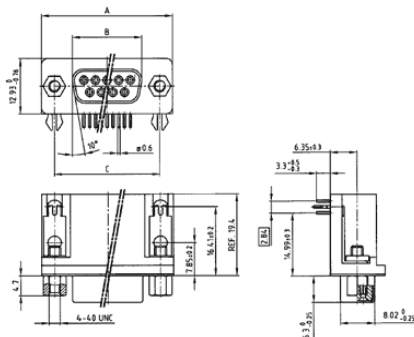


D-Sub Connector  
Solder pin angled .590°  
stamped contacts  
with threaded lock and clip

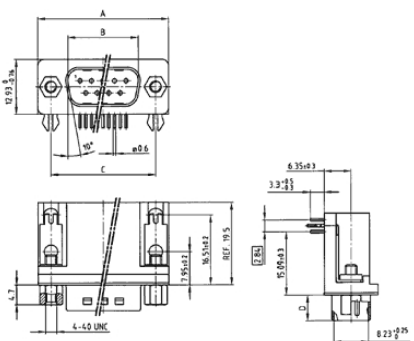


( click on the schematic(s) for a more detailed view )

Socket connector



Plug connector



Dimension for Socket Connectors			
No. of Pos.	A <sub>-0.75</sub>	B <sub>-0.25</sub>	C
9	31.19	16.46	25.00 <sup>+0.12</sup> <sub>-0.12</sub>
15	39.52	24.79	33.30 <sup>+0.15</sup> <sub>-0.10</sub>
25	53.42	38.50	47.04 <sup>+0.13</sup>
37	69.70	54.96	63.50 <sup>+0.13</sup>

Dimension for Plug Connectors				
No. of Pos.	A <sub>-0.75</sub>	B <sup>+0.25</sup>	C	D <sub>-0.30</sub>
9	31.19	16.79	25.00 <sup>+0.12</sup> <sub>-0.12</sub>	6.12
15	39.52	25.12	33.30 <sup>+0.15</sup> <sub>-0.10</sub>	6.12
25	53.42	38.84	47.04 <sup>+0.13</sup>	5.99
37	69.70	55.30	63.50 <sup>+0.13</sup>	5.99

Part Numbers

No. of Pos.	Socket connector tin -plated	
	Non RoHS Compliant	RoHS Compliant
9	302 A 11289 X	DLS1XS7AK59X
15	302 A 11299 X	DLS2XS7AK59X
25	302 A 11309 X	DLS3XS7AK59X
37	302 A 11319 X	DLS4XS7AK59X

No. of Pos.	Plug connector tin -plated with ground indent	
	Non RoHS Compliant	RoHS Compliant
9	301 A 10979 X	DLS1XP7AK59X
15	301 A 10989 X	DLS2XP7AK59X
25	301 A 10999 X	DLS3XP7AK59X
37	301 A 11009 X	DLS4XP7AK59X



REG.-Nr. 40000440



File #: E202784



File #: LR115000