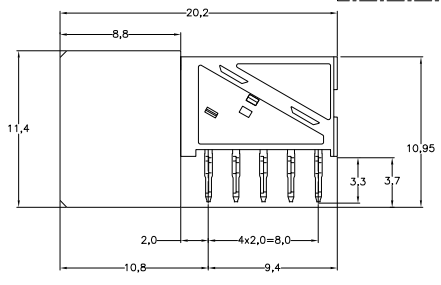
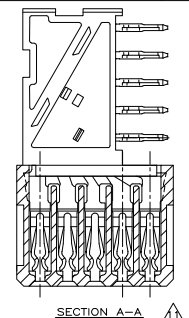
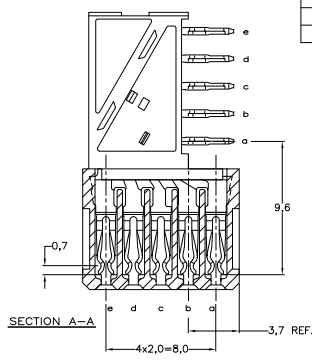
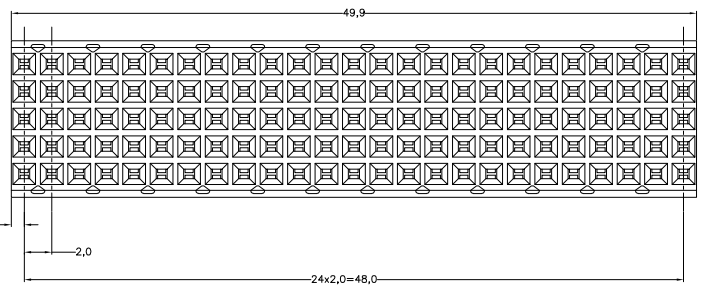
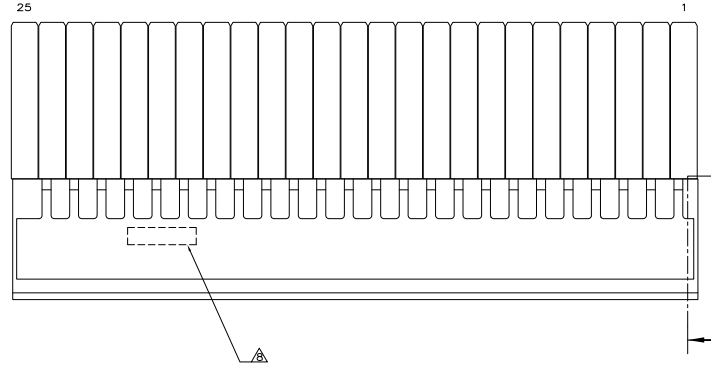
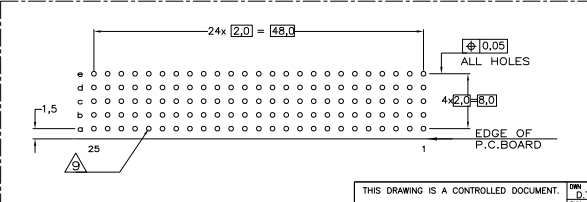


THIS DRAWING IS UNPUBLISHED. RELEASED FOR PUBLICATION  
 © COPYRIGHT BY TYCO ELECTRONICS CORPORATION. ALL RIGHTS RESERVED.

REVISIES		DATE	BY	APP'D
F	LTR			
L	EHC0-0195-04	11-05-04	DvdB	BM
M	EH10-0680-05	30-05-05	BSV	BM
M1	ECR-06-002635	07-02-04	BSV	BM



- NOTES:**
- ▲ MATERIAL CONTACT; PHOSPHORBRONZE  
 MATERIAL HOUSING; GLASSFILLED POLYESTER (GRAY)  
 UL-RATING 94V0.
  - ▲ GENERAL PLATING SPECIFICATION; UNDERPLATING (ENTIRE CONTACT): 1,27µm NICKEL MIN. AND ACTION PIN; 0,5µm TIN-LEAD MIN. FOR PLATING OF MATING SURFACES SEE APPLICABLE SPECIFICATION REFERENCE FOR EACH DASH NUMBER.
  - ▲ CONFORMS TO ALL TESTING ACCORDING IEC 61076-4-101 PERFORMANCE LEVEL 2.
  - ▲ CONFORMS TO ALL TESTING ACCORDING IEC 61076-4-101 PERFORMANCE LEVEL 1.
  - ▲ CONNECTOR TESTED AND QUALIFIED AGAINST TELCORDIA GR-1217-CORE QUALITY LEVEL III, CENTRAL OFFICE APPLICATIONS.
  - ▲ CONNECTOR TESTED AND QUALIFIED AGAINST TELCORDIA GR-1217-CORE QUALITY LEVEL III, UNCONTROLLED ENVIRONMENT APPLICATIONS.
  - ▲ CONNECTOR LUBRICATED WITH TELCORDIA GR-1217-CORE APPROVED LUBRICANT.
  - ▲ CONNECTOR PRINTED WITH PARTNUMBER AND DATECODE. THE MARKING CAN APPEAR ON THE FRONT SIDE OR ON THE BACK SIDE.
  - ▲ PLATED-THROUGH HOLES AT 2x2mm SQUARE GRID. 125 HOLES
  - 10. FITS WITH INTEGRATED GROUND RETURN UPERSHIELD, BASIC P.N. 338109 AND INTEGRATED GROUND RETURN LOWERSHIELD, BASIC P.N. 338110
  - ▲ CONNECTOR ASSEMBLED WITH REDESIGNED CONTACTS. CONTACTS HAVE A CORING-OUT IN THE PLASTIC.



SCALE 2,5:1  
 COMPONENT SIDE AS SHOWN  
 RECOMMENDED PCB-HOLE LAY-OUT

P.C.B. HOLE DIM. ACTION PIN  
 FOR DETAILS SEE APPLICATION SPECIFICATION

FINISH	MATERIAL	PARTNUMBER
▲▲▲	▲	1-100145-9 ▲▲
▲▲▲	▲	100145-9 ▲▲
▲▲▲	▲	100145-4 ▲▲
▲▲▲	▲	100145-1 ▲▲

THIS DRAWING IS A CONTROLLED DOCUMENT.

DESIGNER: D. TREUBEN	20MAY97	Tyco Electronics Corporation a-Hertogenbosch, Netherlands.
CHK: W. V.D. HEIJDEN	20MAY97	
APP: B. MOOIJ		Z-PACK 2mm HM TYPE B 125 POS. FEMALE CONNECTOR
PRODUCT SPEC: 108-19082		
APPLICATION SPEC: 114-19029		
WEIGHT: -		
MATERIAL: -	FINISH: -	SIZE: A2 CASE CODE: 00779 DRAWING NO: C=100145 RESTRICTED TO: -
CUSTOMER DRAWING		SCALE: NTS SHEET: 1 OF 1 REV: M1