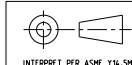


DRW NO. C-470-1075-500 SH 1 REV P

ZONE	REV	SCR NUMBER	DESCRIPTION	BY	DATE	APPROVED
	D	JMAN-6GPNSV.VER01	WAFER LOAD PATTERNS WERE CORRECTED TO SHOW REALITY. ON P/N'S 470-2075-102, 470-2075-602, 470-2155-101 AND 470-2155-601	HCL	10/01/05	J.MARVIN
	E	DMNA-6K8TZN.VER01	ADDED P/N'S 470-3205-100, 470-3205-600, 470-1155-102, & 470-1155-602	DLM	12/20/05	D.MCNAMARA
	F	JPRX-6S2HPM.VER01	ADDED PART NUMBERS 470-1105-103 AND 470-1105-603	HCL-PR	07/26/06	J.MARVIN
	G	JPRX-6UUNNG.VER01	ADDED P/N'S 470-1205-100, 470-1205-600, 470-2205-100, & 470-2205-600 UPDATED DIMENSIONING SCHEME ADDED NOTE FOR MAX BALL PROTRUSION. MISSING DIMENSION "P" AND A NOTE TO EXPLAIN "REFERENCE" AND "BASIC" DIMENSIONS	HCL-MS	11/06/06	J.MARVIN
SH1.A4 SH1.A4 SH4.A3 SH4.B1 SH2.3 SH2.A3	H	DMAN-6ZRNL6.VER01	CONTACT MAT'L WAS "CU ALLOY" 0.71 DIA WAS 0.76 0.25/0.05 WAS 0.30/0.01 0.125 TOL WAS 0.20 PART NUMBERS REORDERED IN TABLE WAFER 7 POSITION REMOVED FROM 470-1235-XXX	D.MALOON	04/10/07	J.MARVIN
	J	JPRX-788MQP.VER01	ADDED P/N'S 470-1075-101 AND 470-1075-601	HCL-AP	10/18/07	J.PROULX
	K	JPRX-7ESPW4.VER01	ADDED P/N 470-1205-101 AND 470-1205-601	HCL-AP	05/15/08	J.PROULX
	L	JPRX-7PNHRT.VER01	ADDED P/Ns 470-3075-101 & 470-3075-601	HCL-RB	03/09/09	J.PROULX
	M	JPRX-7TBGML.VER01	ADDED P/N 470-2235-103 & 470-2235-603 CORRECTED DIM "R" ON SEVERAL PART NUMBERS	HCL-MH	07/02/09	J.PROULX
-	N	CSAS-82ATZZ.VER01	ADDED NEW PART NUMBERS IN TABLES FOR NEW PLATING CODES. REMOVED SHEET 3.	HCL-MH	02/11/2010	C.SAMMIS
	P	JPRX-86EPK6.VER01	ADDED P/N 470-2155-X02	HCL-BK	06/15/2010	C.SAMMIS

- ALL DIMENSIONS ARE IN MM.
- MAT'L: HOUSING/WAFERS/VACUUM CAP - LCP
CONTACTS - HIGH PERFORMANCE COPPER ALLOY.
PER MTS-506.
- 0.71 DIA SOLDER SPHERES WILL NOT BE PERFECTLY SPHERICAL AFTER REFLOW ATTACHMENT.
- HOLES REQUIRED IF OPTIONAL HOLD-DOWN PINS ARE USED.
- SOLDERBALL PROTRUSION BELOW HOUSING.
- SEE TECHNICAL BULLETIN TB-2082 FOR DETAILED LAYOUT AND SMT PROCESS RECOMMENDATIONS.
- MAXIMUM CO-PLANARITY OF THE BALL FIELD.
- MAXIMUM RADIAL TRUE POSITION OF ANY SOLDER BALL IN RELATION TO AN IDEAL BEST FIT GRID.
- TOLERANCES DO NOT APPLY TO REFERENCE DIMENSIONS SHOWN IN "O" OR BASIC DIMENSIONS SHOWN IN "□".

TOLERANCES	DESIGN 7/07/00 D. MCNAMARA	Amphenol TCS A Division of Amphenol Corporation 300 Innovative Way, Nashua, NH 03062 603.879.3000
0.0 ±0.25	DRAWN 06/21/02 RJ MCISAAC	
0.00 ±0.13	CHK 06/23/02 J.MARVIN	TITLE RECEPTACLE MODULE ASSEMBLY NEXLEV CONNECTOR
0.000 ± -	APVD 02/06/2004 J. MARVIN	PART NO. SEE TABLE 1
ANGLES ± -	UNLESS OTHERWISE SPECIFIED DIMENSIONS ARE IN MM. DECIMAL MARKER IS A PERIOD	REV N/A
 INTERPRET PER ASME Y14.5M CODE IDENT 31413		DRAWING NO. C-470-1075-500 Part Type P1002-PT-HSG-CAP-ASM10X13X30 Proc DRAWING C-470-1075-500 1.15 P.0
CUSTOMER USE DRAWING		SHEET 1 OF 8

005-5101-0171 (Rev. 04/00)

4

3

4

3

2

1

B

B

A

DRW NO. C-470-1075-500 SH 2 REV P

ZONE	REV	SCR NUMBER	DESCRIPTION	BY	DATE	APPROVED
			SEE SHEET 1			

TABLE 1

PART NUMBER (SEE TABLE 2)	DESCRIPTION	WAFERS INSTALLED	H	N	P	R
470-1075-X00	10 POS. 7.5 HIGH, REC ASSY	ALL	7.5	9	15.75	21.81
470-1075-X01	10 POS. 7.5 HIGH, REC ASSY	1, 3, 5, 7, 9	7.5	9	15.75	21.81
470-1105-X00	10 POS. 10.5 HIGH, REC ASSY	ALL	10.5	9	15.75	21.81
470-1105-X02	10 POS. 10.5 HIGH, REC ASSY	1,3,5,7,9	10.5	9	15.75	21.81
470-1105-X03	10 POS. 10.5 HIGH, REC ASSY	1,3,5,7,9,10	10.5	9	15.75	21.81
470-1155-X00	10 POS. 15.5 HIGH, REC ASSY	ALL	15.5	9	15.75	21.81
470-1155-X01	10 POS. 15.5 HIGH, REC ASSY	1,3,5,7,9	15.5	9	15.75	21.81
470-1155-X02	10 POS. 15.5 HIGH, REC ASSY	1,3,5,7,9,10	15.5	9	15.75	21.81
470-1205-X00	10 POS. 20.5 HIGH, REC ASSY	ALL	20.5	9	15.75	21.81
470-1205-X01	10 POS. 20.5 HIGH, REC ASSY	1,2,3,4,6,7,8,9,10	20.5	9	15.75	21.81
470-1235-X00	10 POS. 23.5 HIGH, REC ASSY	ALL	23.5	9	15.75	21.81
470-1235-X01	10 POS. 23.5 HIGH, REC ASSY	1,2,3,4,5,6,8,10	23.5	9	15.75	21.81
470-1235-X02	10 POS. 23.5 HIGH, REC ASSY	1,3,5,7,9	23.5	9	15.75	21.81
470-2075-X00	20 POS. 7.5 HIGH, REC ASSY	ALL	7.5	19	33.25	39.31
470-2075-X01	20 POS. 7.5 HIGH, REC ASSY	1,3,5,7,9,11,13,15,17,19	7.5	19	33.25	39.31
470-2075-X02	20 POS. 7.5 HIGH, REC ASSY	1,3,5,7,9,11,13,14,15,16,17,18,19,20	7.5	19	33.25	39.31
470-2105-X00	20 POS. 10.5 HIGH, REC ASSY	ALL	10.5	19	33.25	39.31
470-2105-X01	20 POS. 10.5 HIGH, REC ASSY	1,3,5,7,9,11,13,15,17,19	10.5	19	33.25	39.31
470-2155-X00	20 POS. 15.5 HIGH, REC ASSY	ALL	15.5	19	33.25	39.31
470-2155-X01	20 POS. 15.5 HIGH, REC ASSY	1,3,5,7,9,11,13,14,15,16,17,18,19,20	15.5	19	33.25	39.31
470-2155-X02	20 POS. 15.5 HIGH, REC ASSY	1,2,3,4,5,6,7,8,9,10,11,12,13,14,16,18	15.5	19	33.25	39.31
470-2205-X00	20 POS. 20.5 HIGH, REC ASSY	ALL	20.5	19	33.25	39.31
470-2235-X00	20 POS. 23.5 HIGH, REC ASSY	ALL	23.5	19	33.25	39.31
470-2235-X01	20 POS. 23.5 HIGH, REC ASSY	1,2,4,5,7,8,10,11,13,14,16,17,19,20	23.5	19	33.25	39.31
470-2235-X02	20 POS. 23.5 HIGH, REC ASSY	1 THRU 16,18,20	23.5	19	33.25	39.31
470-2235-X03	20 POS. 23.5 HIGH, REC ASSY	1 THRU 12,18,19,20	23.5	19	33.25	39.31
470-3075-X00	30 POS. 7.5 HIGH, REC ASSY	ALL	7.5	29	50.75	56.81
470-3075-X01	30 POS. 7.5 HIGH, REC ASSY	1,3,5,7,9,11,13,15,17,19,21,23,25,27,29	7.5	29	50.75	56.81
470-3105-X00	30 POS. 10.5 HIGH, REC ASSY	ALL	10.5	29	50.75	56.81
470-3155-X00	30 POS. 15.5 HIGH, REC ASSY	ALL	15.5	29	50.75	56.81
470-3205-X00	30 POS. 20.5 HIGH, REC ASSY	ALL	20.5	29	50.75	56.81
470-3235-X00	30 POS. 23.5 HIGH, REC ASSY	ALL	23.5	29	50.75	56.81
470-3235-X01	30 POS. 23.5 HIGH, REC ASSY	1,3,5,7,9,11,13,15,17,19,21,23,25,27,29	23.5	29	50.75	56.81
470-3235-X02	30 POS. 23.5 HIGH, REC ASSY	1 THRU 26,28,30	23.5	29	50.75	56.81
470-5105-X00	25 POS. 10.5 HIGH, REC ASSY	ALL	10.5	24	42.00	48.06
470-5155-X00	25 POS. 15.5 HIGH, REC ASSY	ALL	15.5	24	42.00	48.06
470-5155-X01	25 POS. 15.5 HIGH, REC ASSY	1 THRU 21, 23, 25	15.5	24	42.00	48.06

TABLE 2

PART NUMBER	SOLDER BALL/WAFER DESCRIPTION
470-YYYS-10Y	TIN/LEAD SOLDER BALLS - EUTECTIC (ROHS 5 COMPLIANCE), WAFERS WITH NI SULFAMATE UNDERPLATE
470-YYYS-20Y	TIN/LEAD SOLDER BALLS - EUTECTIC (ROHS 5 COMPLIANCE), WAFERS WITH NANO NI UNDERPLATE
470-YYYS-60Y	LEAD FREE SOLDER BALLS (ROHS 6 COMPLIANCE), WAFERS WITH NI SULFAMATE UNDERPLATE
470-YYYS-70Y	LEAD FREE SOLDER BALLS (ROHS 6 COMPLIANCE), WAFERS WITH NANO NI UNDERPLATE

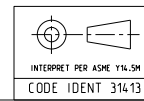
TOLERANCES	DESIGN
0.0	±0.25
0.00	±0.13
0.000	±
ANGLES	±

Amphenol TCS
A Division of Amphenol Corporation
300 Innovative Way, Nashua, NH 03063 603.879.3000

TITLE: RECEPTACLE MODULE ASSEMBLY
NEXLEV CONNECTOR

PART NO. SEE TABLE 1
DRAWING NO. C-470-1075-500
PROF TYPE P1002-PT-HSG-CAP-ASM10X13X30
PROF DRAWING C-470-1075-500

SIZE B SCALE 2/1 SHEET 2 OF 8



UNLESS OTHERWISE SPECIFIED DIMENSIONS ARE IN MM. DECIMAL MARKER IS A PERIOD.

CUSTOMER USE DRAWING

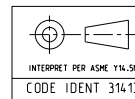
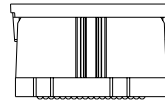
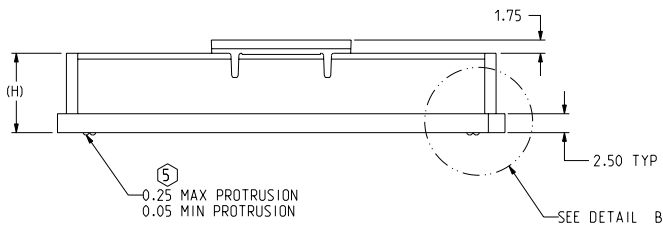
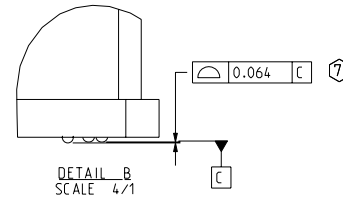
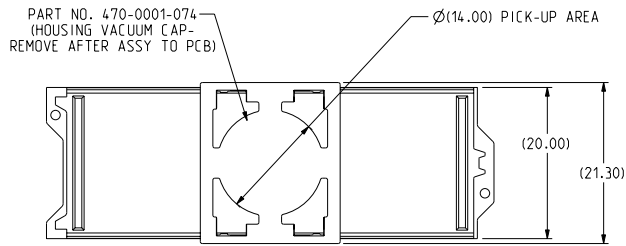
C-470-1075-500

SH 2 REV P

4 3 2 1

DRW NO. C-470-1075-500	SH 3	REV P
---------------------------	---------	----------

ZONE	REV	SCR NUMBER	DESCRIPTION	BY	DATE	APPROVED
			SEE SHEET 1			



TOLERANCES	DESIGN
0.0	±0.25
0.00	±0.13
0.000	± -
ANGLES	± -

DESIGN: J. MENAMARA
DRAWN: 06/21/02
CHK: 06/21/02
APVD: 02/06/2004

Amphenol TCS
A Division of Amphenol Corporation
300 Innovative Way, Nashua, NH 03062 603.879.3000

TITLE: RECEPTACLE MODULE ASSEMBLY
NEXLEV CONNECTOR

PART NO.	SEE TABLE 1	REV	N/A
DRAWING NO.	C-470-1075-500	REV	P
Proj# Type	P1002-PT-HSG-CAP-ASM10X13X30	1.25	P.O.
Proj# DRAWING	C-470-1075-500		
SIZE	B	SCALE	2/1
		SHEET	3 OF 8

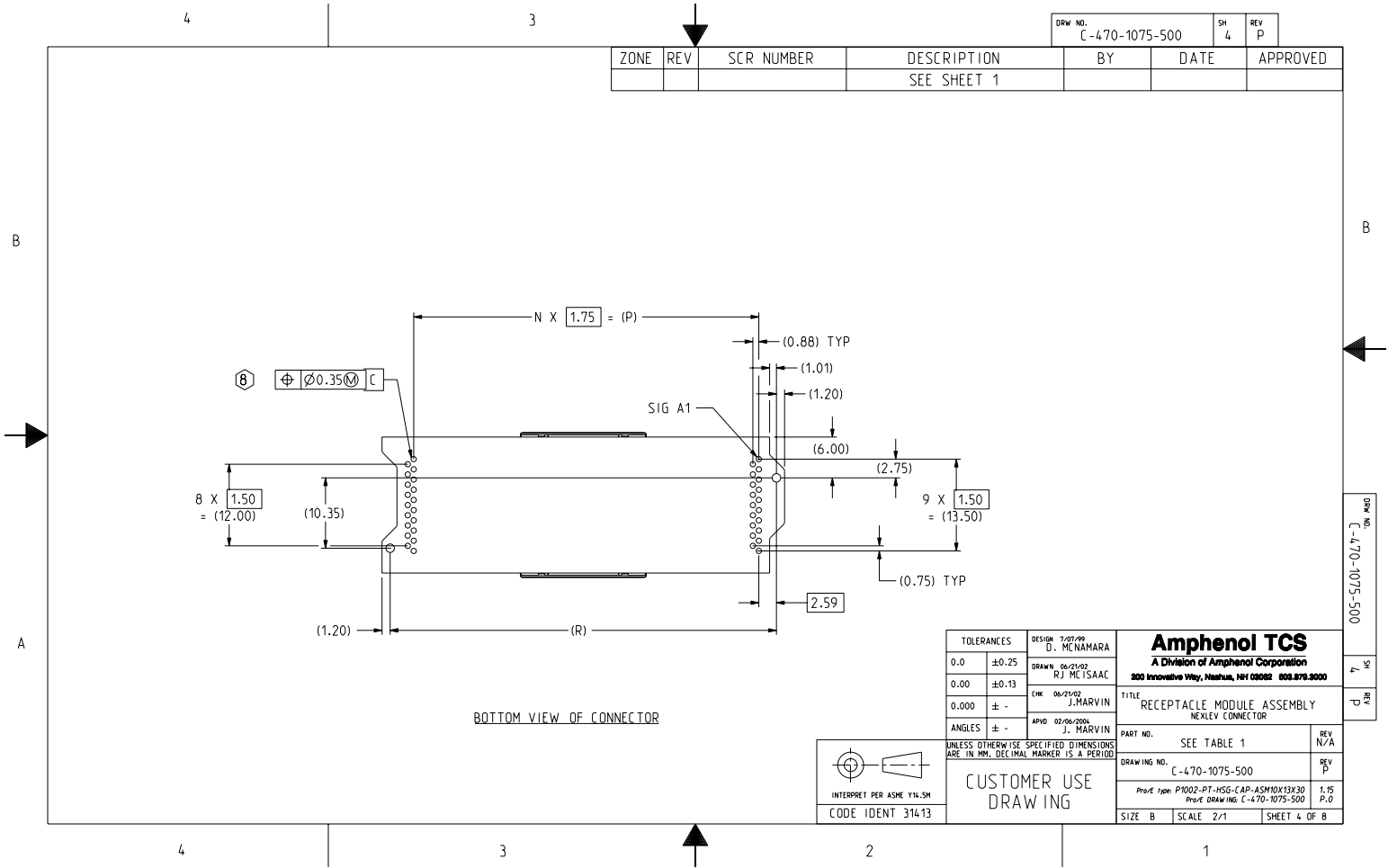
CUSTOMER USE
DRAWING

C-470-1075-500

3

P

SHEET 3 OF 8



ZONE	REV	SCR NUMBER	DESCRIPTION	BY	DATE	APPROVED
			SEE SHEET 1			

DRW NO. C-470-1075-500	SH 4	REV P
---------------------------	---------	----------

TOLERANCES	DESIGN
0.0	±0.25
0.00	±0.13
0.000	±
ANGLES	±

Amphenol TCS
A Division of Amphenol Corporation
300 Innovative Way, Nashua, NH 03062 603.879.3000

TITLE
RECEPTACLE MODULE ASSEMBLY
NEXLEV CONNECTOR

PART NO. SEE TABLE 1
REV N/A

DRAWING NO. C-470-1075-500
REV P

Proj# type P1002-PT-HSG-CAP-ASM10X13X30
Rev# DRAWING C-470-1075-500
1.15 P.0

SIZE B SCALE 2/1 SHEET 4 OF 8

INTERPRET PER ASME Y14.5M
CODE IDENT 31413

CUSTOMER USE
DRAWING

005-5/01-0(L)*-1

7
HS

d
AB

4

3

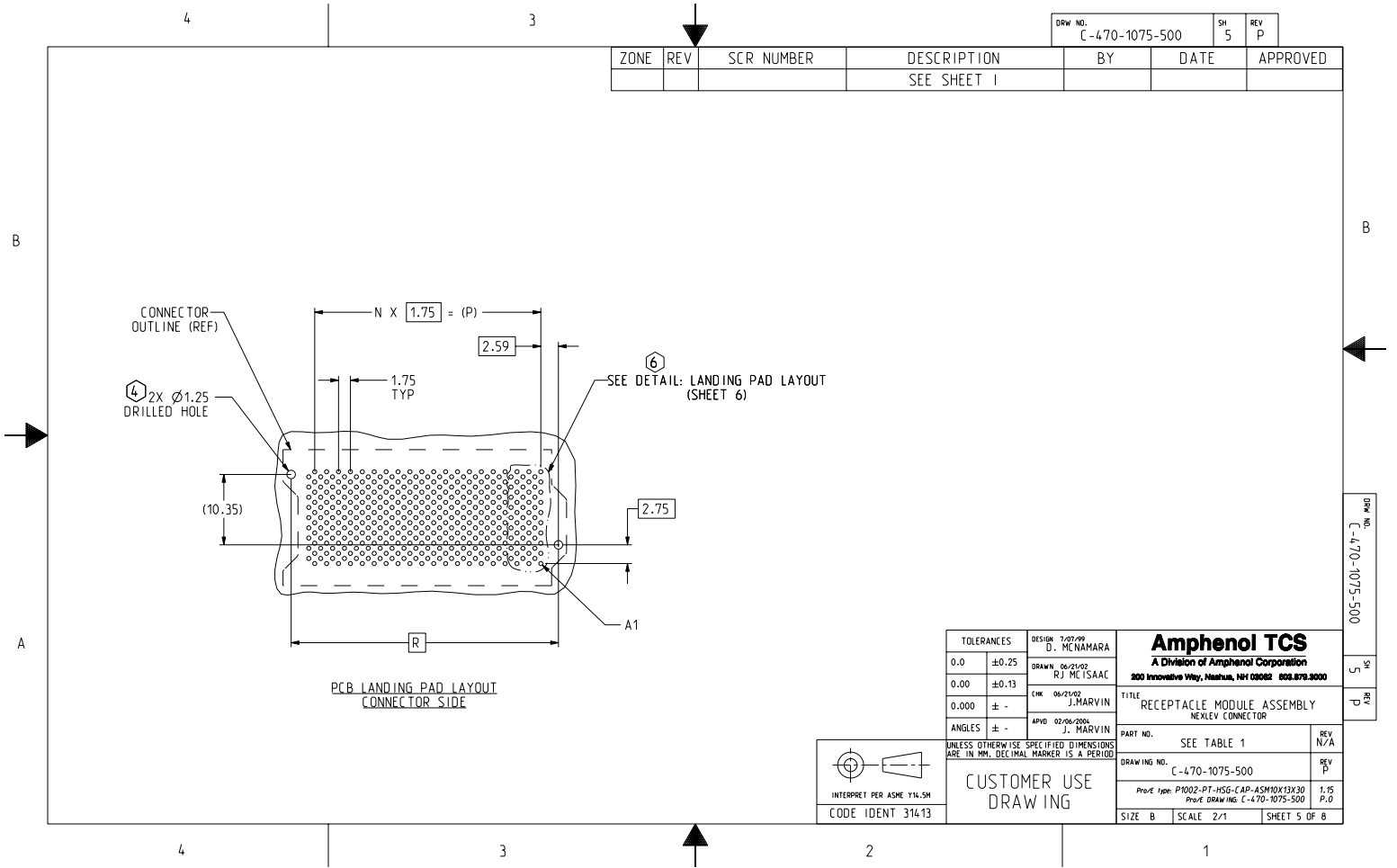
4

3


2

1

BOTTOM VIEW OF CONNECTOR

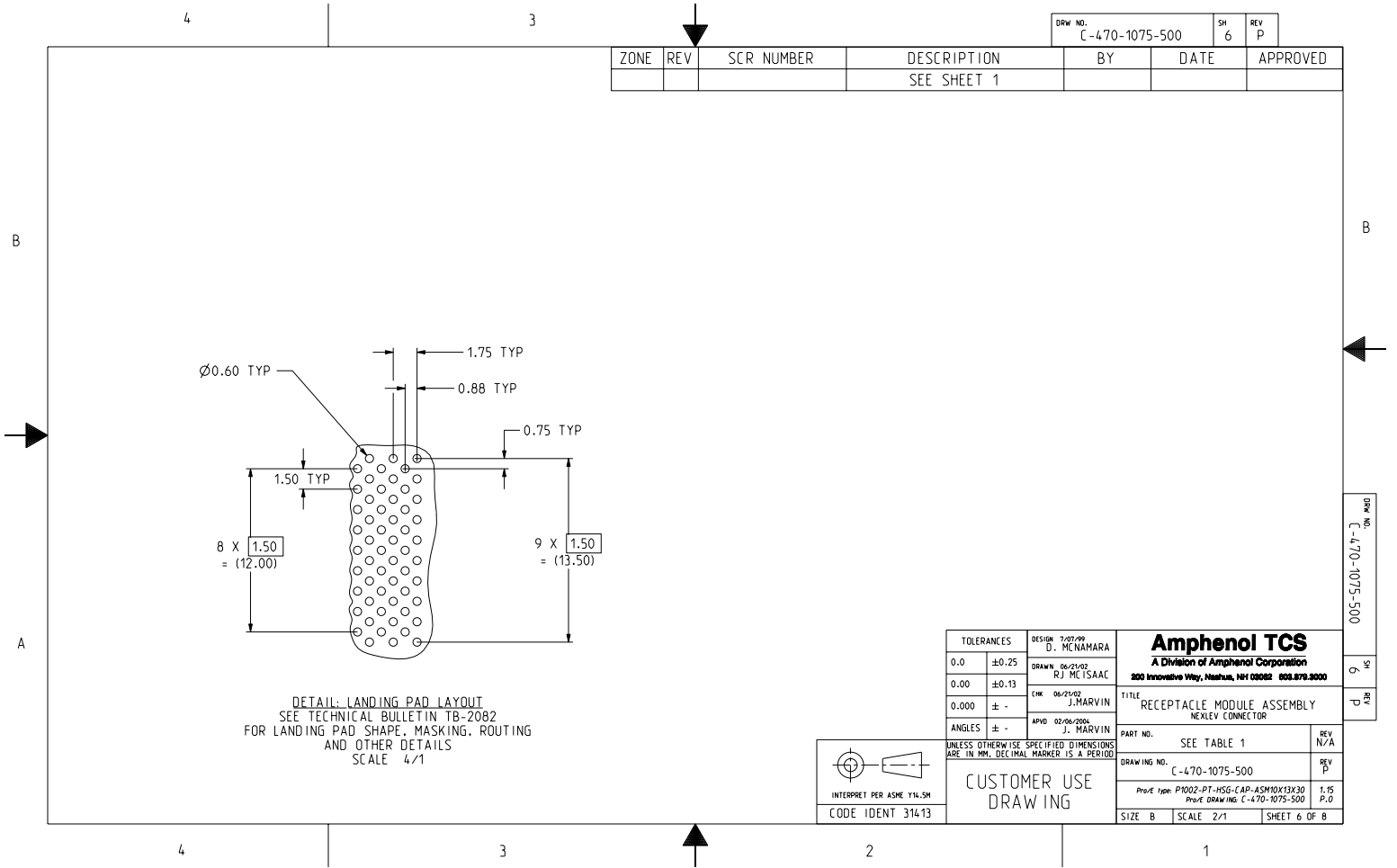


DRW NO. C-470-1075-500	SH 5	REV P				
ZONE	REV	SCR NUMBER	DESCRIPTION	BY	DATE	APPROVED
			SEE SHEET 1			

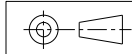
TOLERANCES	DESIGN D. MENAMARA	Amphenol TCS A Division of Amphenol Corporation 300 Innovative Way, Nashua, NH 03062 603.879.3000	TITLE	PART NO.	REV
0.0 ±0.25	DRAWN 06/21/02 RJ MCISAAC		RECEPTACLE MODULE ASSEMBLY	SEE TABLE 1	N/A
0.00 ±0.13	CHK 06/23/02 J. MARVIN		NEXLEV CONNECTOR		
0.000 ± -	APVD 02/06/2004 J. MARVIN				
ANGLES ± -	UNLESS OTHERWISE SPECIFIED DIMENSIONS ARE IN MM. DECIMAL MARKER IS A PERIOD		DRAWING NO.	C-470-1075-500	REV P
 CUSTOMER USE DRAWING			Proj# Type P1002-PT-HSG-CAP-ASM10X13X30	1.75	
INTERPRET PER ASME Y14.5M CODE IDENT 31413			Proj# DRAWING C-470-1075-500	P.0	
			SIZE B	SCALE 2/1	SHEET 5 OF 8

C-470-1075-500

SHEET 5 OF 8

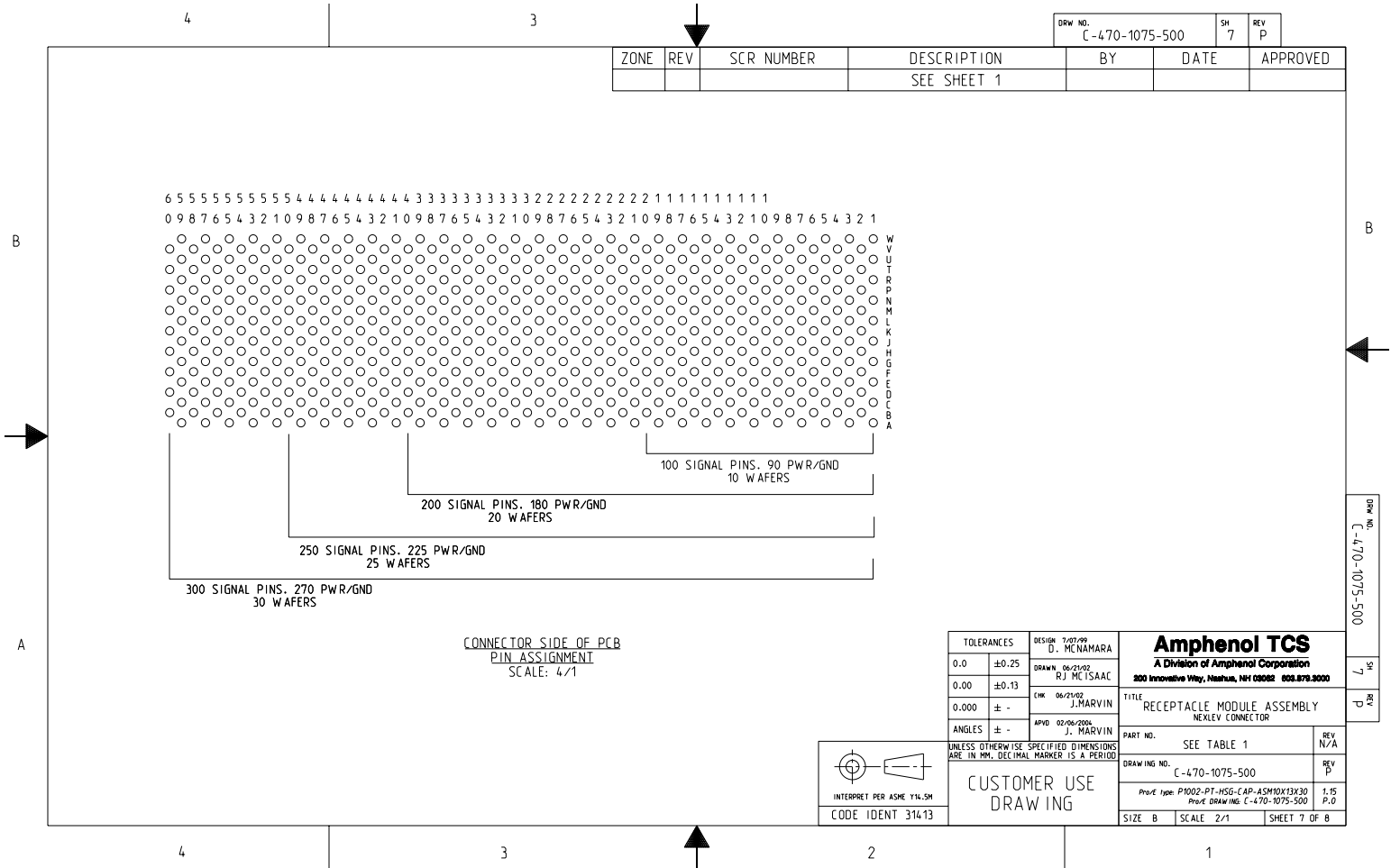


DRW NO. C-470-1075-500	SH 6	REV P				
ZONE	REV	SCR NUMBER	DESCRIPTION	BY	DATE	APPROVED
			SEE SHEET 1			

TOLERANCES	DESIGN D. MENAMARA	Amphenol TCS A Division of Amphenol Corporation 300 Innovative Way, Nashua, NH 03062 603.879.3000	TITLE	REV
0.0 ±0.25	DRAWN 06/21/02 RJ MCISAAC		RECEPTACLE MODULE ASSEMBLY	N/A
0.00 ±0.13	CHK 06/23/02 J. MARVIN		NEXLEV CONNECTOR	
0.000 ± -	APVD 02/06/2004 J. MARVIN		PART NO.	SEE TABLE 1
ANGLES ± -			DRAWING NO.	C-470-1075-500
UNLESS OTHERWISE SPECIFIED DIMENSIONS ARE IN MM. DECIMAL MARKER IS A PERIOD		Project type: P1002-PT-HSG-CAP-ASM10X13X30 Project DRAWING: C-470-1075-500		1.25 P.O.
 INTERPRET PER ASME Y14.5M CODE IDENT 31413		CUSTOMER USE DRAWING		SIZE B SCALE 2/1 SHEET 6 OF 8

005-5/01-01(7)-1

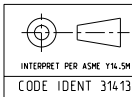
9
15
d



ZONE	REV	SCR NUMBER	DESCRIPTION	BY	DATE	APPROVED
			SEE SHEET 1			

DRW NO. C-470-1075-500	SH 7	REV P
---------------------------	---------	----------

CONNECTOR SIDE OF PCB
PIN ASSIGNMENT
SCALE: 4/1



TOLERANCES		DESIGN D. MENAMARA	Amphenol TCS A Division of Amphenol Corporation 300 Innovative Way, Nashua, NH 03062 603.870.3000	
0.0	±0.25	DRAWN 06/21/02 RJ MCISAAC		
0.00	±0.13	CHK 06/23/02 J. MARVIN		
0.000	± -	APVD 02/06/2004 J. MARVIN		
ANGLES		± -	TITLE RECEPTACLE MODULE ASSEMBLY NEXLEV CONNECTOR	
UNLESS OTHERWISE SPECIFIED DIMENSIONS ARE IN MM. DECIMAL MARKER IS A PERIOD.			PART NO. SEE TABLE 1	
CUSTOMER USE DRAWING			DRAWING NO. C-470-1075-500	
			Part# Type P1002-PT-HSG-CAP-ASM10X13X30 Part# DRAWING C-470-1075-500	
SIZE	B	SCALE	2/1	SHEET 7 OF 8

DRW NO. C-470-1075-500

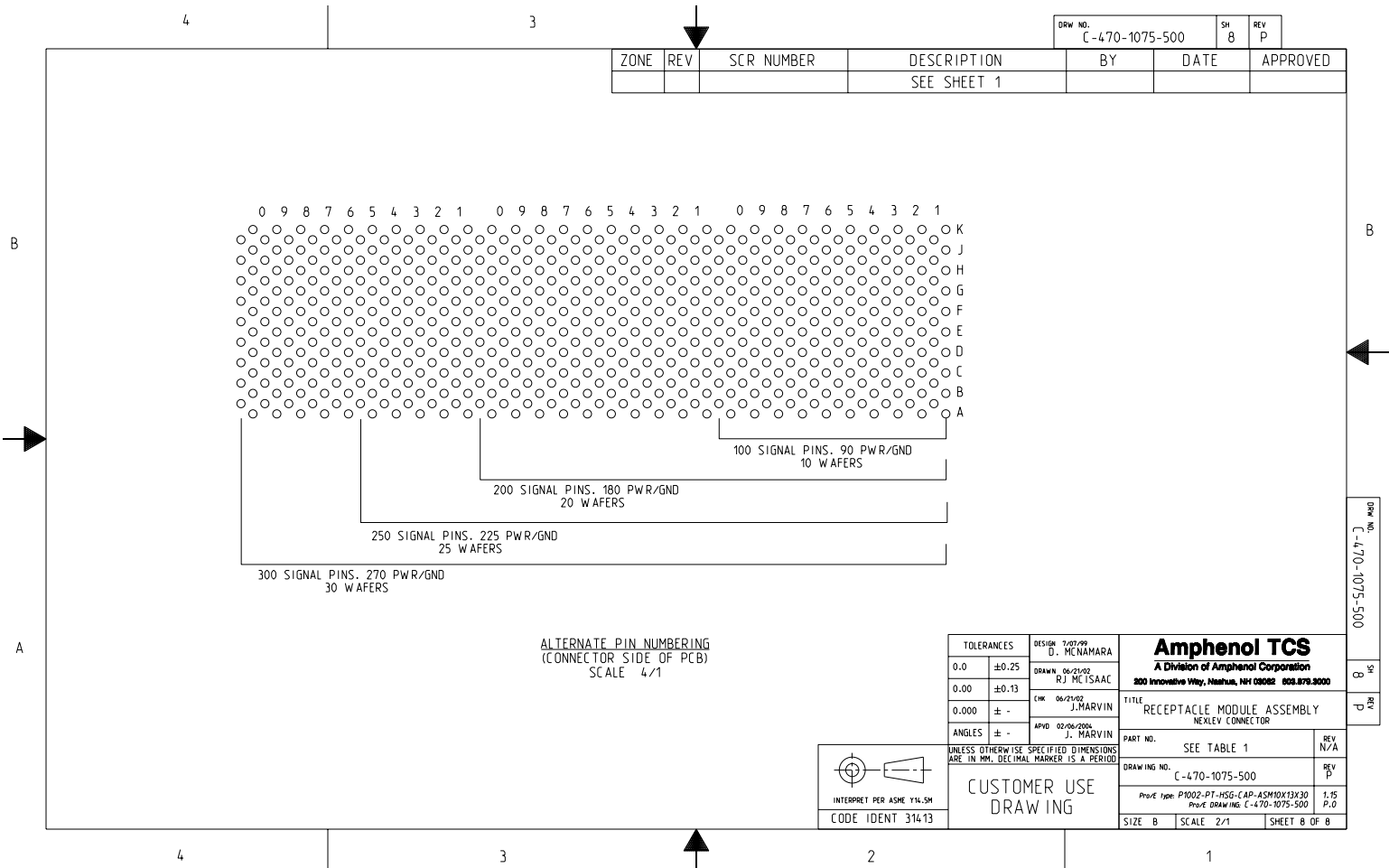
SH 7
REV P

4

3

DRW NO. C-470-1075-500	SH 8	REV P
---------------------------	---------	----------

ZONE	REV	SCR NUMBER	DESCRIPTION	BY	DATE	APPROVED
			SEE SHEET 1			



0 9 8 7 6 5 4 3 2 1 0 9 8 7 6 5 4 3 2 1 0 9 8 7 6 5 4 3 2 1

K
J
H
G
F
E
D
C
B
A

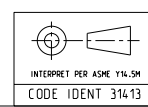
100 SIGNAL PINS. 90 PWR/GND
10 WAFERS

200 SIGNAL PINS. 180 PWR/GND
20 WAFERS

250 SIGNAL PINS. 225 PWR/GND
25 WAFERS

300 SIGNAL PINS. 270 PWR/GND
30 WAFERS

ALTERNATE PIN NUMBERING
(CONNECTOR SIDE OF PCB)
SCALE 4/1



TOLERANCES	DESIGN
0.0	±0.25
0.00	±0.13
0.000	± -
ANGLES	± -

DESIGN: J. MENAMARA
DRAWN: 06/21/02 R.J. MCISAAC
CHK: 06/23/02 J. MARVIN
APVD: 02/06/2004 J. MARVIN

Amphenol TCS
A Division of Amphenol Corporation
300 Innovative Way, Nashua, NH 03062 603.879.3000

TITLE: RECEPTACLE MODULE ASSEMBLY
NEXLEV CONNECTOR

PART NO.	SEE TABLE 1	REV	N/A
DRAWING NO.	C-470-1075-500	REV	P
Proj# Type	P1002-PT-HSG-CAP-ASM10X13X30	1.25	P.O.
Proj# DRAWING	C-470-1075-500		

CUSTOMER USE
DRAWING

SIZE	B	SCALE	2/1	SHEET	8 OF 8
------	---	-------	-----	-------	--------

C-470-1075-500

8 1/2
d 1/8

4

3

2

1