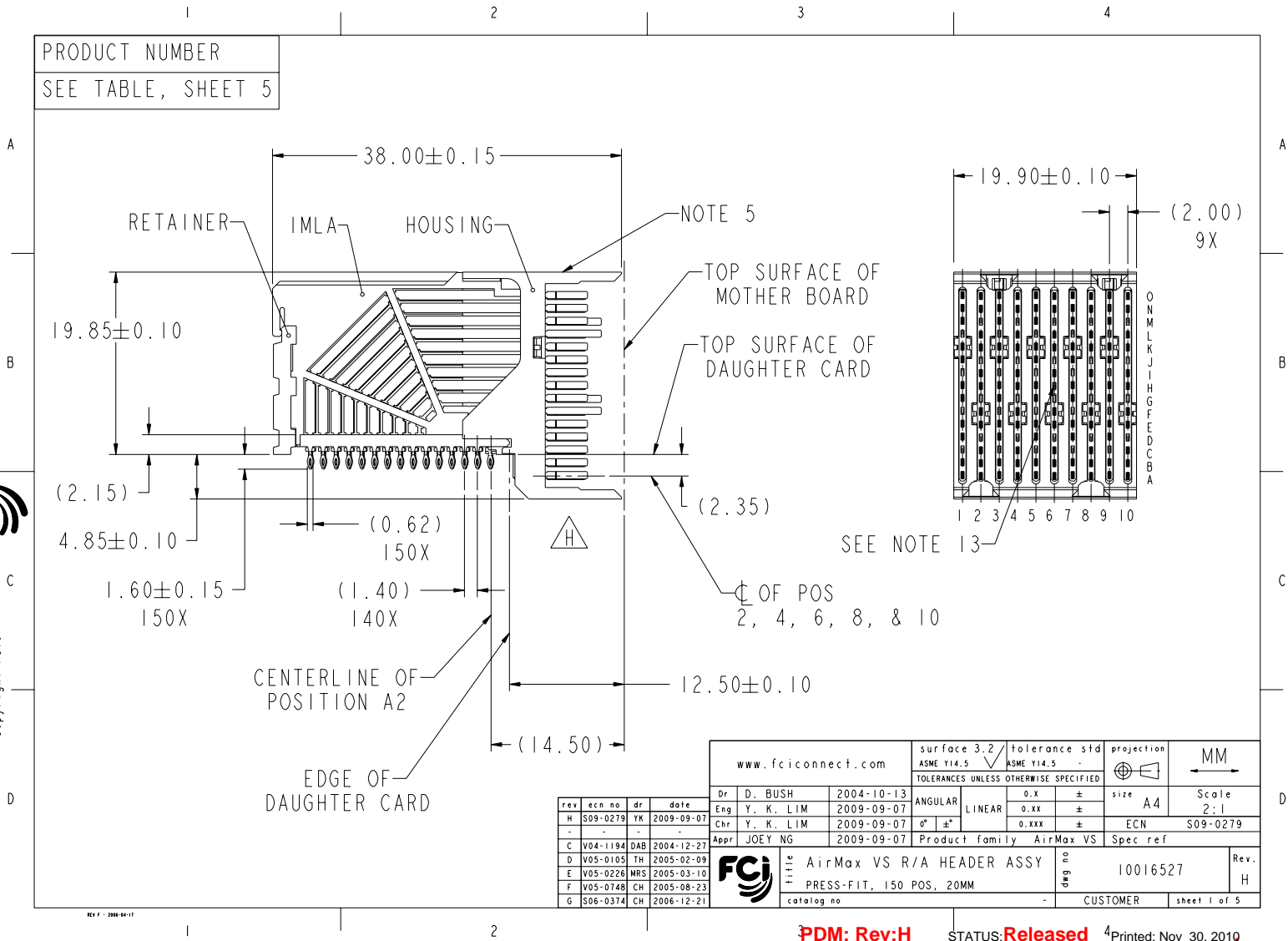


PRODUCT NUMBER
SEE TABLE, SHEET 5



rev	ecn no	dr	date
H	S09-0279	YK	2009-09-07
-	-	-	-
C	V04-1194	DAB	2004-12-27
D	V05-0105	TH	2005-02-09
E	V05-0226	MRS	2005-03-10
F	V05-0748	CH	2005-08-23
G	S06-0374	CH	2006-12-21

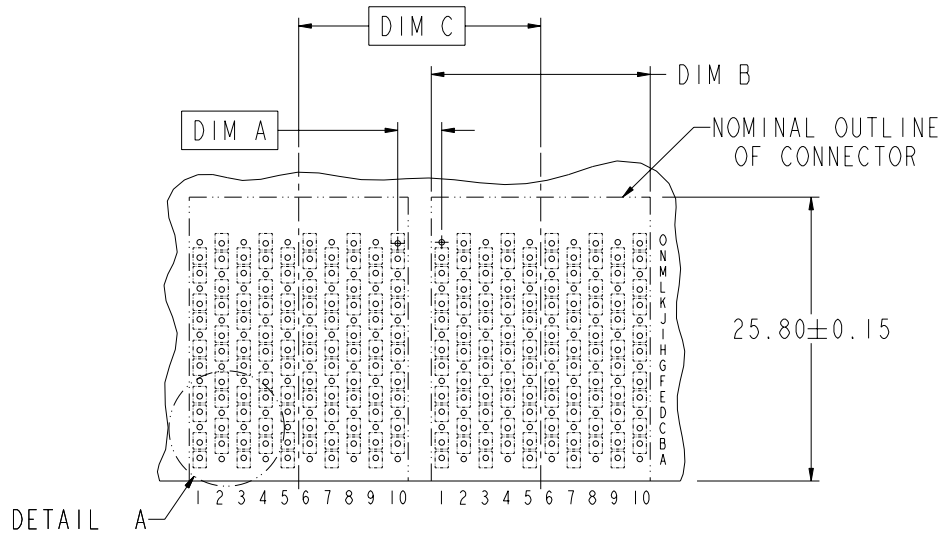
www.fciconnect.com		surface 3.2 ASME Y14.5	tolerance std ASME Y14.5	projection A4	MM
Dr D. BUSH 2004-10-13		TOLERANCES UNLESS OTHERWISE SPECIFIED		size	Scale 2:1
Eng Y. K. LIM 2009-09-07		ANGULAR	0.x ±	ECN	S09-0279
Chr Y. K. LIM 2009-09-07		LINEAR	0.xx ±	Product family	AirMax VS
Appr JOEY NG 2009-09-07		0° ±	0.xxx ±	Spec ref	
FCJ AirMax VS R/A HEADER ASSY				part no	10016527
PRESS-FIT, 150 POS, 20MM				Rev.	H
catalog no				CUSTOMER	sheet 1 of 5

Copyright FCJ



Copyright FCI.

DESCRIPTION	DIM A	DIM B	DIM C
2-20MM MODULES PLACED END-TO-END	2.00	19.90 2X	20.00
1-20MM MODULE & 1-22MM MODULE PLACED END-TO-END	3.00	19.90 1X & 21.90 1X	21.00



RECOMMENDED PCB LAYOUT
FOR DIFFERENTIAL APPLICATIONS
COMPONENT SIDE
(TWO ADJACENT FOOTPRINTS SHOWN)
NOTES 6 & 7

	title	AirMax VS R/A HEADER ASSY	drwg no	10016527	Rev.	H
	catalog no	PRESS-FIT, 150 POS, 20MM	-	CUSTOMER	sheet	2 of 5

REV F - 2008-04-17

PDM: Rev:H

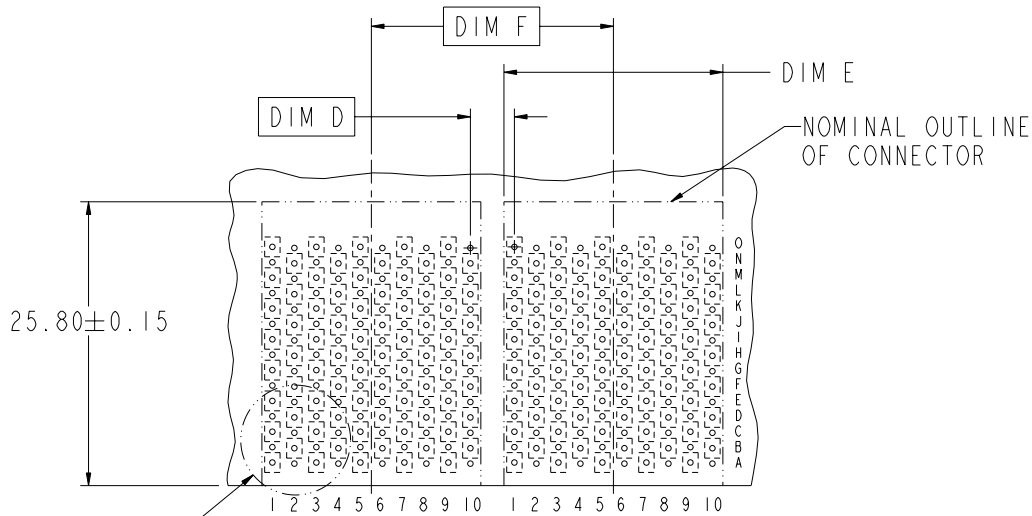
STATUS:Released

4 Printed: Nov 30, 2010



Copyright FCJ.

DESCRIPTION	DIM D	DIM E	DIM F
2-20MM MODULES PLACED END-TO-END	2.00	19.90 2X	20.00
1-20MM MODULE & 1-22MM MODULE PLACED END-TO-END	3.00	19.90 1X & 21.90 1X	21.00



RECOMMENDED PCB LAYOUT
FOR SINGLE ENDED APPLICATIONS
COMPONENT SIDE
(TWO ADJACENT FOOTPRINTS SHOWN)
NOTES 6 & 7

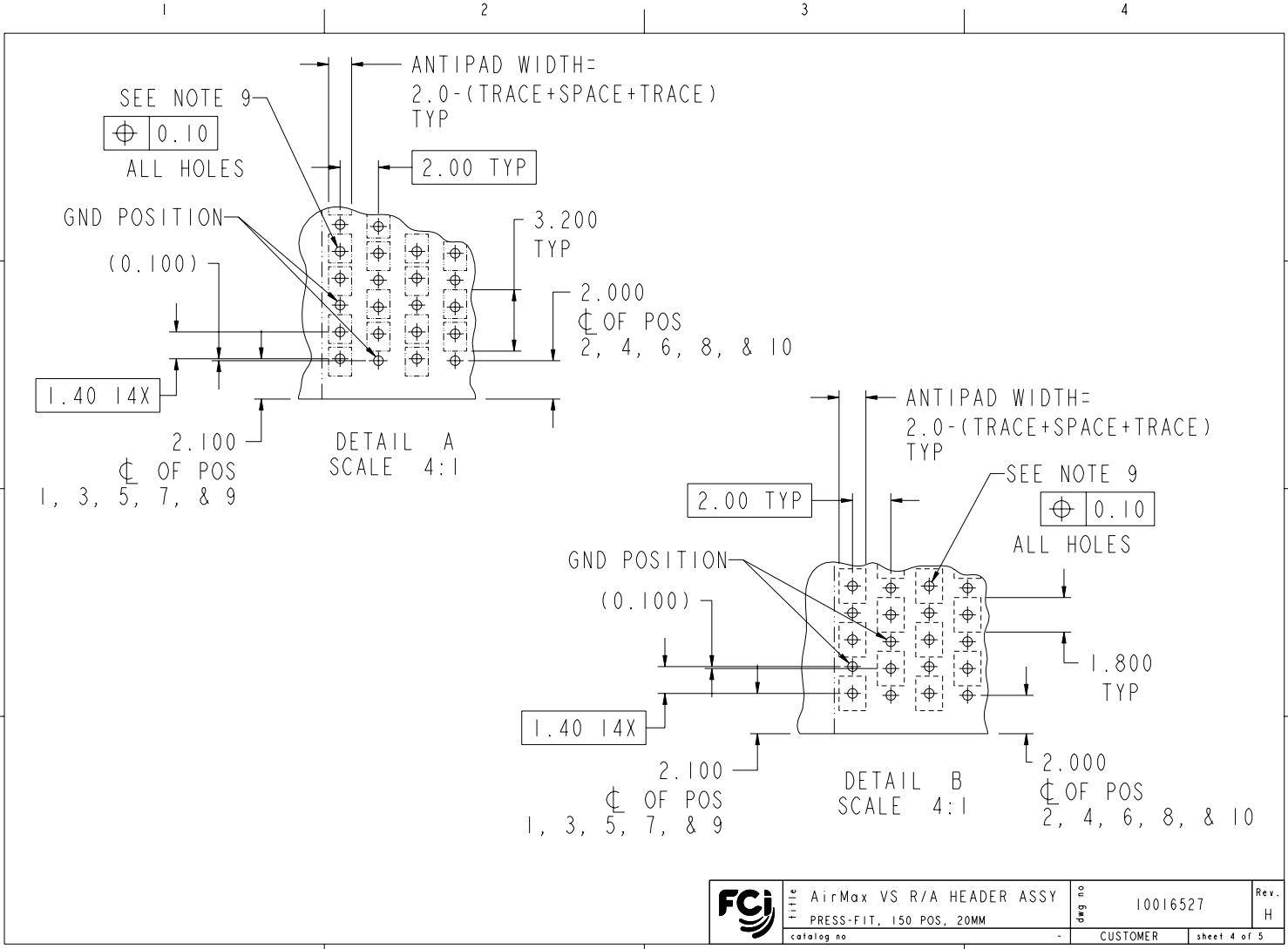
	title	AirMax VS R/A HEADER ASSY	drwg no	10016527	Rev.	H
	catalog no	PRESS-FIT, 150 POS, 20MM	-	CUSTOMER	sheet	3 of 5

REV F - 2008-04-17

PDM: Rev:H STATUS:Released ⁴Printed: Nov 30, 2010



Copyright FCJ.



REV F - 2006-04-17

	Part no	AirMax VS R/A HEADER ASSY	Draw no	10016527	Rev.	H
	catalog no	PRESS-FIT, 150 POS, 20MM		CUSTOMER	sheet	4 of 5

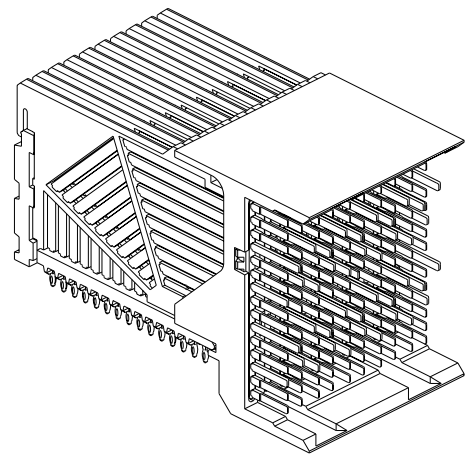
PDM: Rev:H STATUS:Released 4 Printed: Nov 30, 2010

PART NUMBER	PRESS-FIT TAIL PLATING TYPE	SHORT DETECT CONTACT
10016527-101	TIN/LEAD ALLOY OVER NICKEL	NO
10016527-101LF	TIN OVER NICKEL (LEAD FREE)	
10016527-111	TIN/LEAD ALLOY OVER NICKEL	YES (SEE NOTE 13)
10016527-111LF	TIN OVER NICKEL (LEAD FREE)	

NOTES:

- 1. CONNECTOR MATERIALS:
HOUSING & RETAINER: HIGH TEMP THERMOPLASTIC, NATURAL, UL94V-0
IMLA PLASTIC: HIGH TEMP THERMOPLASTIC, BLACK, UL94V-0
CONTACT: COPPER ALLOY
- 2. CONTACT PLATING:
SEPARABLE INTERFACE:
PERFORMANCE-BASED PLATING, QUALIFIED TO MEET THE REQUIREMENTS OF FCI PRODUCT SPECIFICATION GS-12-239 INCLUDING TELCORDIA GR-1217-CORE (NOVEMBER 1995) CENTRAL OFFICE TEST SEQUENCE

PRESS-FIT TAILS: SEE TABLE
- 3. PRODUCT SPECIFICATION: GS-12-239
- 4. APPLICATION SPECIFICATION: GS-20-035
- 5. PRODUCT MARKING, (PART NUMBER & LOT CODE), ON THIS SURFACE
- 6. REFER TO CUSTOMER DRAWING 10035911 FOR INFORMATION REGARDING PCB LAYOUT OF POWER AND GUIDE MODULES RELATIVE TO SIGNAL MODULES
- 7. POSITIONS F AND L OF ODD NUMBERED COLUMNS AND POSITIONS G AND M OF EVEN NUMBERED COLUMNS CORRESPOND TO EARLY MATE HEADER PINS
- 8. THERE IS NO GROUND BUSSING WITHIN THE CONNECTOR SYSTEM



- 9. REFER TO CUSTOMER DRAWING 10045979 FOR INFORMATION ON PCB HOLE DIAMETERS AND PLATING OPTIONS.
- 10. LEAD FREE PRODUCT MEETS EUROPEAN UNION DIRECTIVES & OTHER COUNTRY REGULATIONS AS DESCRIBED IN GS-22-008
- 11. THE HOUSING WILL WITHSTAND EXPOSURE TO 260°C PEAK TEMPERATURE FOR 40 SECONDS IN A CONVECTION, INFRA-RED OR VAPOR PHASE REFLOW OVEN.
- 12. PACKAGING MEETS GS-14-920 LEAD FREE LABELING SPECIFICATION.
- 13. MATING PIN H6 HAS 0.5mm LESS WIPE THAN THE SHORTEST SIGNAL PIN.
- 14. A \triangle H SYMBOL WILL BE NEXT TO ANY DIMENSION, VIEW, OR NOTE WHICH HAS BEEN MODIFIED WITH THE CURRENT DRAWING REVISION.



Copyright FCI.

FCI	title	AirMax VS R/A HEADER ASSY	drwg no	10016527	Rev.	H
	catalog no	PRESS-FIT, 150 POS, 20MM	-	CUSTOMER	sheet	5 of 5