

Series **D xx P 24A 6 xx 09 LF**

Number of contacts
09 , 15 , 25 , 37 , 50

Contacts
P : Pin

Termination

Code	Type	Foot Print/Pitch	Length of termination	PCB thickness
24A	Straight version	6 / 2.84mm	2	1.6

Plating
6 : 500 Mating / Unmating Mini

Packaging specification
Tray

See Note RoHS

NOTE RoHS INFORMATION

- The "LF" product meet european union Directives and other country regulations as described in GS-22-008.
- The housing will withstand exposure to 260° peak temperature for 30 seconds in a convection , infra-red or vapor reflow oven. See application notes/procedures if are available.
- Termination plating spec: 1.27µ Nickel mini, 2.5 to 7.5µ Sn(pure mate)
- Shell plating : Nickel bright
- Accessories : Sn pure bright
- Packaging spec ; See GS-14-920

Mounting Options

RL	Insert M3
RV	Female Screw UNC 4-40
RX	Insert UNC 4-40

Product Specification

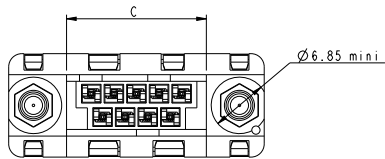
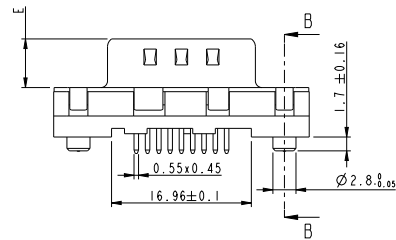
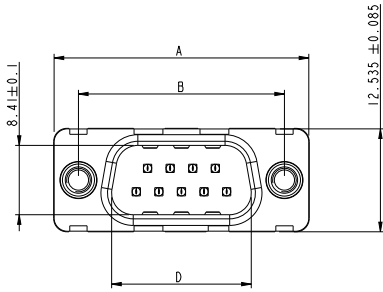
see : GS-12-372

Packaging Specification

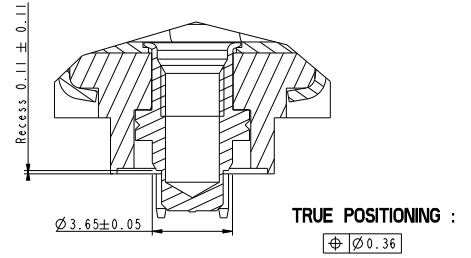
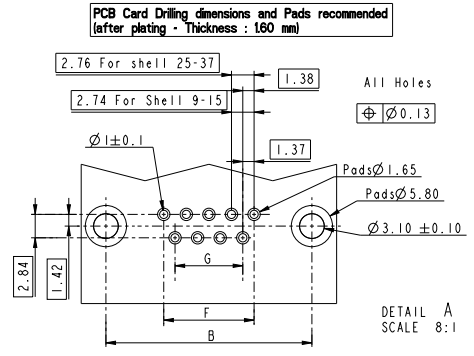
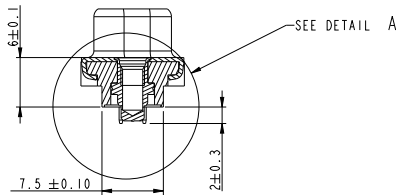
See GS-14-1061

lfr	ecn no	dr	date
A	-	HL	03/02/06
B	LS06-0040	PCR	23/03/06
C	LS06-0105	HLE	25/07/06
D	LS06-0220	PCR	2006/12/21
E	LS07-0050	HLE	2007/03/02
F	110-0120	NG	2010-05-27
G	110-0197	NG	2010-10-14

www.fciconnect.com		surface ISO 1302	tolerance std ISO 406 ISO 1101	projection mm
		TOLERANCES UNLESS OTHERWISE SPECIFIED		mm
Dr	P. CRON	03/02/06	ANGULAR	0.X ±0.3
Eng	H. LEGALLIC	03/02/06	LINEAR	0.XX ±0.1
Chr	NIRMAL G	2010-10-14	0° ±2°	0.XXX ±0.05
Appr	SUDHIR V	2010-10-14	Product family	SUB DELTA D PIP
title				size A3
SUB DELTA D PIP MALE				Scale 2:1
straight for tray				ECN 110-0197
catalog no				Spec ref -
SEE TABLE				ECN 110-0197
CUSTOMER COPY				Rev. G
sheet 1 of 3				



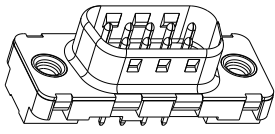
SECTION B-B



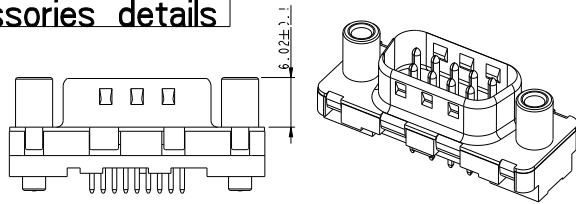
SHELL	P/N LEAD FREE	A ±0.38	B ±0.10	C ±0.10	D ±0.25 0	E ±0.15 0	F	G
09	D09P24A6xx09LF	30.81	24.99	16.96	16.79	5.9	10.96	8.22
15	D15P24A6xx09LF	39.14	33.32	25.18	25.12	5.9	19.18	16.44
25	D25P24A6xx09LF	53.03	47.04	39.12	38.84	5.7	33.12	30.36
37	D37P24A6xx09LF	69.32	63.50	55.68	55.30	5.7	49.68	46.92

FOR xx SEE SHEET 1

Accessories details



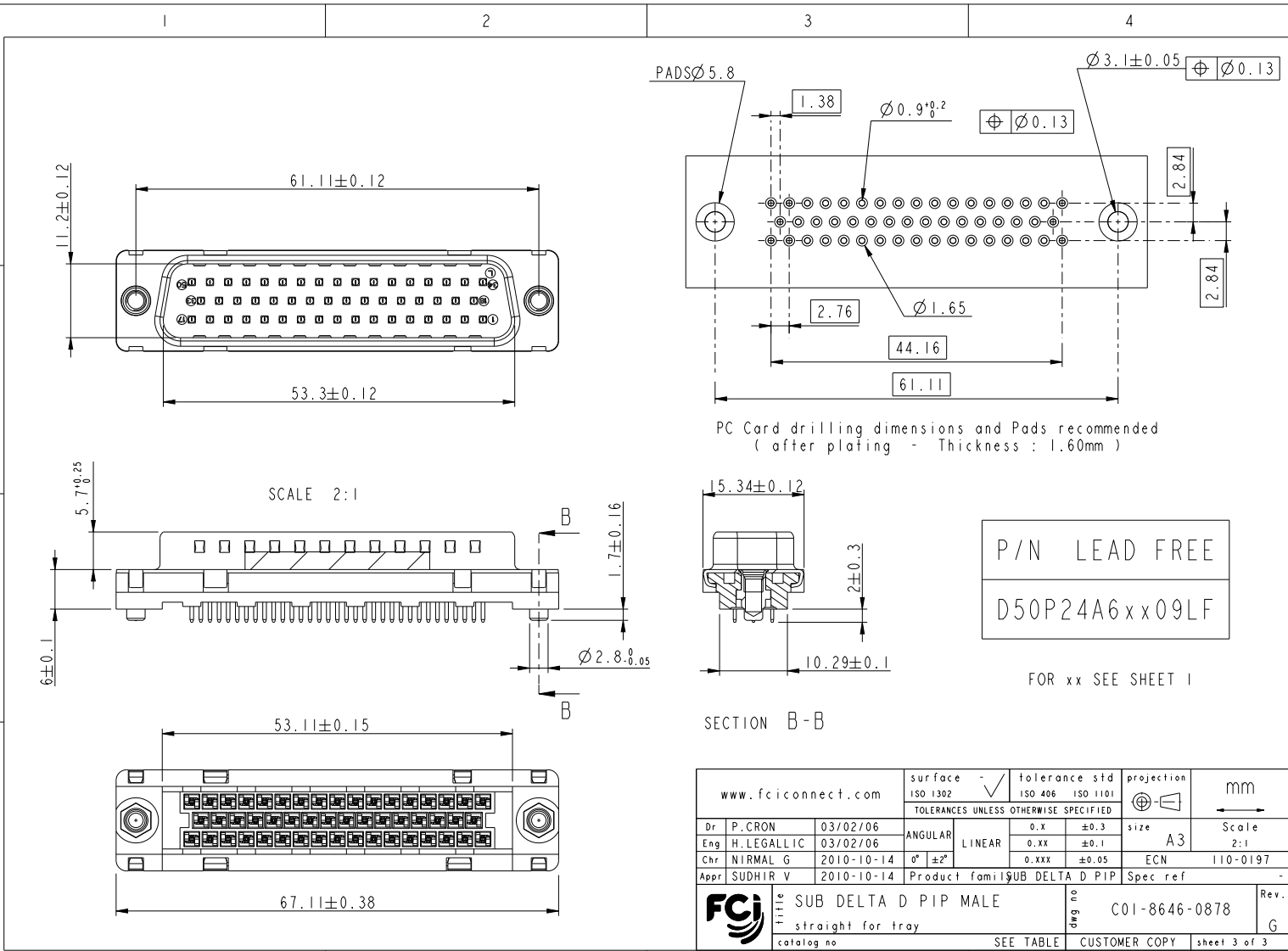
TYPE RX / RL



TYPE RV

www.fciconnect.com		surface	tolerance std	projection	mm
		ISO 1302	ISO 406	ISO 1101	
TOLERANCES UNLESS OTHERWISE SPECIFIED					
Dr	P. CRON	03/02/06	ANGULAR	0.x	±0.3
Eng	H. LEGALLIC	03/02/06	LINEAR	0.xxx	±0.1
Chr	NIRMAL G	2010-10-14	°	±2°	
Appr	SUDHIR V	2010-10-14	Product fami	IGUB DELTA D PIP	Spec ref
FCI SUB DELTA D PIP MALE				2	Rev.
Straight for tray				2	C01-8646-0878
SEE TABLE				2	G
PDM: Rev:G				2	CUSTOMER COPY
STATUS Released				2	sheet 2 of 3

Copyright FCI



REV F - 2008 04-11