

4

3

2

1

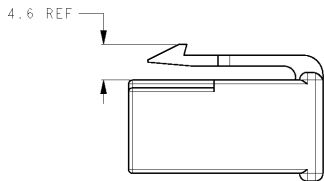
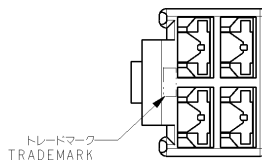
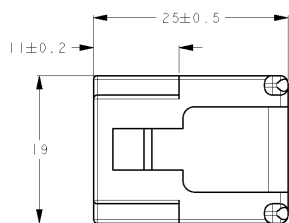
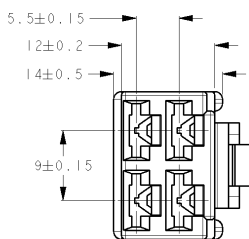
THIS DRAWING IS UNPUBLISHED.

RELEASED FOR PUBLICATION

© COPYRIGHT

ALL INTERNATIONAL RIGHTS RESERVED.

LOC	DIST	REVISIONS					
		P	LTR	DESCRIPTION	DATE	DWN	APVD
J	-	F1		REVISED PER ECO-11-005030	14APR11	RK	HMR



1 嵌合相手ハウジング型番: 172134-□  
 2 適用端子型番: 170342-□, 170343-□, 170350-□  
 3 本品の材料はUL94難燃グレードV-0

1 MATING CAP HOUSING P/N: 172134-□  
 2 APPLIED CONTACT P/N: 170342-□, 170343-□, 170350-□  
 3 THIS ITEM IS MADE FROM MATERIAL RATED UL94 FLAME RETARDANCE V-0

色	型番
自然色 NATURAL	△ I-172134-1
赤 RED	172134-9
橙 ORANGE	172134-8
黄 YELLOW	172134-7
灰 GRAY	172134-6
青 BLUE	172134-5
緑 GREEN	172134-4
茶 BROWN	172134-3
黒 BLACK	172134-2
自然色 NATURAL	172134-1
色 COLOR	型番 PART NUMBER

DIMENSIONS: mm		TOLERANCES UNLESS OTHERWISE SPECIFIED: ±0.25		DWN Y. OKADA 20OCT2010		TE Connectivity	
MATERIAL 66ナイロン 66NYLON		FINISH 色: 表参照 COLOR: SEE TABLE		CHK S. YAMADA 20OCT2010		NAME 250シリーズハウジングランスコネクタ 4極プラグハウジング 250SERIES HOUSING LANCE CONNECTOR 4POS PLUG HOUSING	
APVD N. YAMASAKI 20OCT2010		PRODUCT SPEC 108-5147		AFVD 20OCT2010		SIZE A3	
APPLICATION SPEC 114-5052		WEIGHT		CAGE CODE 100779		DRAWING NO C=172134	
CUSTOMER DRAWING		SCALE 2:1		SHEET 1		REV F1	