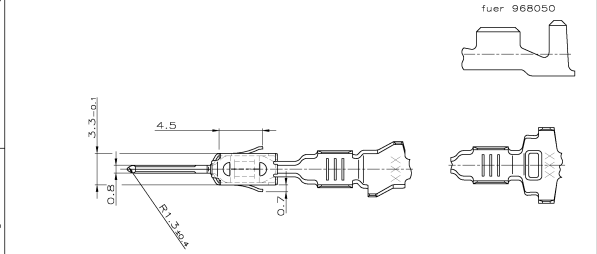
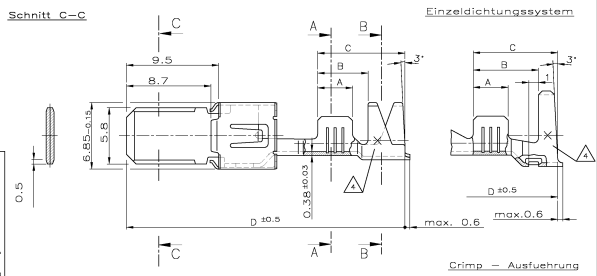


Z10	D	T	TW	REVIZIJSKI NEDERŠKIH KODIFIKACIJSKI BROJEVI	DNE	DOK	PROM
101	101	101	101	101	101	101	101

TE-Teil-Nr. Boardware	Änderungs- stand	TE-Teil-Nr. Einzelausführung	Oberfläche	Werkstoff	DOB in mm <sup>2</sup>	Drahtcrimp			Anschlagwerkzeug (MGC-Applikator HD)	A	B	C	D
						Isolationsring	Isolationsring	Isolationsring					
2-2112966-2	A	2-2112965-2	△	CuFe 2	6.0	E = 5.3 G = 5.7 D <sub>0</sub> = 2.9	H = 9.4 K = 9.8 D = 6.2	6.0 mm <sup>2</sup> = 2.35 AWG 10 = 2.30	1855636-6	4.5	7.8	11	29.3
2-962919-2	E	2-963744-2	△	CuFe 2	4.0	E = 4.6 G = 4.6 D <sub>0</sub> = 2.3	H = 7.8 K = 7.8 D = 5.5	4.0 mm <sup>2</sup> = 2.33	2-878567-2	4	7.1	9.1	28.3
1-962919-2	D	1-963744-2	△	CuSn 4	4.0	E = 4.6 G = 4.6 D <sub>0</sub> = 2.3	H = 7.8 K = 7.8 D = 5.5	4.0 mm <sup>2</sup> = 2.33	539757-2	4	7.1	9.1	28.3
1-962919-1	D	1-963744-1	△	CuSn 4	4.0	E = 4.6 G = 4.6 D <sub>0</sub> = 2.3	H = 7.8 K = 7.8 D = 5.5	4.0 mm <sup>2</sup> = 2.33	539757-2	4	7.1	9.1	28.3
2-962918-2	E	2-963743-2	△	CuFe 2	2.5	E = 3.8 G = 4.0 D <sub>0</sub> = 1.7	H = 7.8 K = 7.8 D = 5.5	2.5 mm <sup>2</sup> = 1.97	2-878566-2	3.6	6.7	8.7	28.3
2-962918-1	E	2-963743-1	△	CuFe 2	2.5	E = 3.8 G = 4.0 D <sub>0</sub> = 1.7	H = 7.8 K = 7.8 D = 5.5	2.5 mm <sup>2</sup> = 1.97	2-878566-2	3.6	6.7	8.7	28.3
1-962918-2	D	1-963743-2	△	CuSn 4	1.5	E = 3.8 G = 4.0 D <sub>0</sub> = 1.7	H = 7.8 K = 7.8 D = 5.5	1.5 mm <sup>2</sup> = 1.69	539757-2	3.6	6.7	8.7	28.3
1-962918-1	D	1-963743-1	△	CuSn 4	1.5	E = 3.8 G = 4.0 D <sub>0</sub> = 1.7	H = 7.8 K = 7.8 D = 5.5	1.5 mm <sup>2</sup> = 1.69	539757-2	3.6	6.7	8.7	28.3
2-962917-2	E	2-963742-2	△	CuFe 2	1.0	E = 2.8 G = 3.0 D <sub>0</sub> = 1.1	H = 7.8 K = 7.8 D = 5.5	1.0 mm <sup>2</sup> = 1.56	2-878565-2	3	6.1	8.1	28.3
2-962917-1	E	2-963742-1	△	CuFe 2	1.0	E = 2.8 G = 3.0 D <sub>0</sub> = 1.1	H = 7.8 K = 7.8 D = 5.5	1.0 mm <sup>2</sup> = 1.56	2-878565-2	3	6.1	8.1	28.3
1-962917-2	D	1-963742-2	△	CuSn 4	0.75	E = 2.8 G = 3.0 D <sub>0</sub> = 1.1	H = 7.8 K = 7.8 D = 5.5	0.75 mm <sup>2</sup> = 1.47	539757-2	3	6.1	8.1	28.3
1-962917-1	D	1-963742-1	△	CuSn 4	0.5	E = 2.8 G = 3.0 D <sub>0</sub> = 1.1	H = 7.8 K = 7.8 D = 5.5	0.5 mm <sup>2</sup> = 1.38	539757-2	3	6.1	8.1	28.3
2-968050-1	A	2-968051-1	△	CuFe 2	6.0	E = 5.3 G = 5.6 D <sub>0</sub> = 2.9	H = 7.3 K = 7.6 D = 4.6	6.0 mm <sup>2</sup> = 2.55	2-878968-2	4.5	6.8	9.1	28.8
1-968050-1	A	1-968051-1	△	CuSn 4	4.0	E = 4.6 G = 4.6 D <sub>0</sub> = 2.3	H = 7.3 K = 7.6 D = 4.6	4.0 mm <sup>2</sup> = 2.17	2-878968-2	4.5	6.8	9.1	28.8
2-962846-2	D	2-963741-2	△	CuFe 2	4.0	E = 4.6 G = 4.8 D <sub>0</sub> = 2.3	H = 6.7 K = 7.0 D = 4.0	4.0 mm <sup>2</sup> = 2.33	2-878564-2	4	6	10.8	30.5
2-962846-1	D	2-963741-1	△	CuFe 2	4.0	E = 4.6 G = 4.8 D <sub>0</sub> = 2.3	H = 6.7 K = 7.0 D = 4.0	4.0 mm <sup>2</sup> = 2.33	2-878564-2	4	6	10.8	30.5
1-962846-2	C	1-963741-2	△	CuSn 4	4.0	E = 4.6 G = 4.8 D <sub>0</sub> = 2.3	H = 6.7 K = 7.0 D = 4.0	4.0 mm <sup>2</sup> = 2.33	539759-2	4	6	10.8	30.5
1-962846-1	C	1-963741-1	△	CuSn 4	4.0	E = 4.6 G = 4.8 D <sub>0</sub> = 2.3	H = 6.7 K = 7.0 D = 4.0	4.0 mm <sup>2</sup> = 2.33	539759-2	4	6	10.8	30.5
2-962845-2	E	2-963740-2	△	CuFe 2	2.5	E = 3.8 G = 4.0 D <sub>0</sub> = 1.7	H = 5.7 K = 5.9 D = 3.2	2.5 mm <sup>2</sup> = 1.97	2-878563-2	3.6	5.2	9	28.7
2-962845-1	E	2-963740-1	△	CuFe 2	2.5	E = 3.8 G = 4.0 D <sub>0</sub> = 1.7	H = 5.7 K = 5.9 D = 3.2	2.5 mm <sup>2</sup> = 1.97	2-878563-2	3.6	5.2	9	28.7
1-962845-2	D	1-963740-2	△	CuSn 4	1.5	E = 3.8 G = 4.0 D <sub>0</sub> = 1.7	H = 5.7 K = 5.9 D = 3.2	1.5 mm <sup>2</sup> = 1.69	539759-2	3.6	5.2	9	28.7
1-962845-1	D	1-963740-1	△	CuSn 4	1.5	E = 3.8 G = 4.0 D <sub>0</sub> = 1.7	H = 5.7 K = 5.9 D = 3.2	1.5 mm <sup>2</sup> = 1.69	539759-2	3.6	5.2	9	28.7
2-963736-2	C	2-963739-2	△	CuFe 2	4.0	E = 4.6 G = 4.8 D <sub>0</sub> = 2.4	H = 5.5 K = 5.7 D = 3.2	4.0 mm <sup>2</sup> = 2.33	2-878562-2	4	5.9	9.3	29
2-963736-1	C	2-963739-1	△	CuFe 2	4.0	E = 4.6 G = 4.8 D <sub>0</sub> = 2.4	H = 5.5 K = 5.7 D = 3.2	4.0 mm <sup>2</sup> = 2.33	2-878562-2	4	5.9	9.3	29
1-963736-2	B	1-963739-2	△	CuSn 4	4.0	E = 4.6 G = 4.8 D <sub>0</sub> = 2.4	H = 5.5 K = 5.7 D = 3.2	4.0 mm <sup>2</sup> = 2.33	—	4	5.9	9.3	29
1-963736-1	B	1-963739-1	△	CuSn 4	4.0	E = 4.6 G = 4.8 D <sub>0</sub> = 2.4	H = 5.5 K = 5.7 D = 3.2	4.0 mm <sup>2</sup> = 2.33	—	4	5.9	9.3	29
2-963735-2	C	2-963738-2	△	CuFe 2	2.5	E = 3.8 G = 4.0 D <sub>0</sub> = 1.7	H = 4.5 K = 4.7 D = 2.6	2.5 mm <sup>2</sup> = 1.97	2-878561-2	3.5	5.1	8.1	27.8
2-963735-1	C	2-963738-1	△	CuFe 2	2.5	E = 3.8 G = 4.0 D <sub>0</sub> = 1.7	H = 4.5 K = 4.7 D = 2.6	2.5 mm <sup>2</sup> = 1.97	2-878561-2	3.5	5.1	8.1	27.8
1-963735-2	B	1-963738-2	△	CuSn 4	1.5	E = 3.8 G = 4.0 D <sub>0</sub> = 1.7	H = 4.5 K = 4.7 D = 2.6	1.5 mm <sup>2</sup> = 1.69	—	3.5	5.1	8.1	27.8
1-963735-1	B	1-963738-1	△	CuSn 4	1.5	E = 3.8 G = 4.0 D <sub>0</sub> = 1.7	H = 4.5 K = 4.7 D = 2.6	1.5 mm <sup>2</sup> = 1.69	—	3.5	5.1	8.1	27.8
2-963734-2	C	2-963737-2	△	CuFe 2	1.0	E = 2.8 G = 3.0 D <sub>0</sub> = 1.1	H = 3.3 K = 3.5 D = 1.8	1.0 mm <sup>2</sup> = 1.56	2-878654-2	3	4.6	6.8	26.5
2-963734-1	C	2-963737-1	△	CuFe 2	1.0	E = 2.8 G = 3.0 D <sub>0</sub> = 1.1	H = 3.3 K = 3.5 D = 1.8	1.0 mm <sup>2</sup> = 1.56	2-878654-2	3	4.6	6.8	26.5
1-963734-2	B	1-963737-2	△	CuSn 4	0.75	E = 2.8 G = 3.0 D <sub>0</sub> = 1.1	H = 3.3 K = 3.5 D = 1.8	0.75 mm <sup>2</sup> = 1.47	539759-2	3	4.6	6.8	26.5
1-963734-1	B	1-963737-1	△	CuSn 4	0.5	E = 2.8 G = 3.0 D <sub>0</sub> = 1.1	H = 3.3 K = 3.5 D = 1.8	0.5 mm <sup>2</sup> = 1.38	539759-2	3	4.6	6.8	26.5
2-965984-1	A	2-965985-1	△	CuFe 2	0.5	E = 2.2 G = 2.2 D <sub>0</sub> = 0.8	H = 3.1 K = 3.1 D = 1.4	—	—	2.5	3.7	5.7	26.5
1-965984-1	B	1-965985-1	△	CuSn 4	0.2	E = 2.2 G = 2.2 D <sub>0</sub> = 0.8	H = 3.1 K = 3.1 D = 1.4	—	—	2.5	3.7	5.7	26.5



- Bemerkungen
- △ Kontaktzone vorversilbert min. 3µm  
übriger Bereich vorversilbert min. 1µm  
Ueberfeder blank
  - △ Vorverzinkt min. 1µm  
Ueberfeder blank
  - 3 Ausdrückwerkzeug fuer Flachst. 5.8x0.8  
Nr. 726548-1
  - △ Buchstabe fuer Aenderungsstand

TE Connectivity	TE Connectivity	TE Connectivity	TE Connectivity	TE Connectivity
TE Connectivity	TE Connectivity	TE Connectivity	TE Connectivity	TE Connectivity

TE-Teil-Nr. Boardware	Änderungs- stand	TE-Teil-Nr. Einzelausführung	Oberfläche	Werkstoff	DOB in mm <sup>2</sup>	Drahtcrimp	Isolationsring	Isolationsring	Anschlagwerkzeug (MGC-Applikator HD)	A	B	C	D
2-2112966-2	A	2-2112965-2	△	CuFe 2	6.0	E = 5.3 G = 5.7 D <sub>0</sub> = 2.9	H = 9.4 K = 9.8 D = 6.2	6.0 mm <sup>2</sup> = 2.35 AWG 10 = 2.30	1855636-6	4.5	7.8	11	29.3