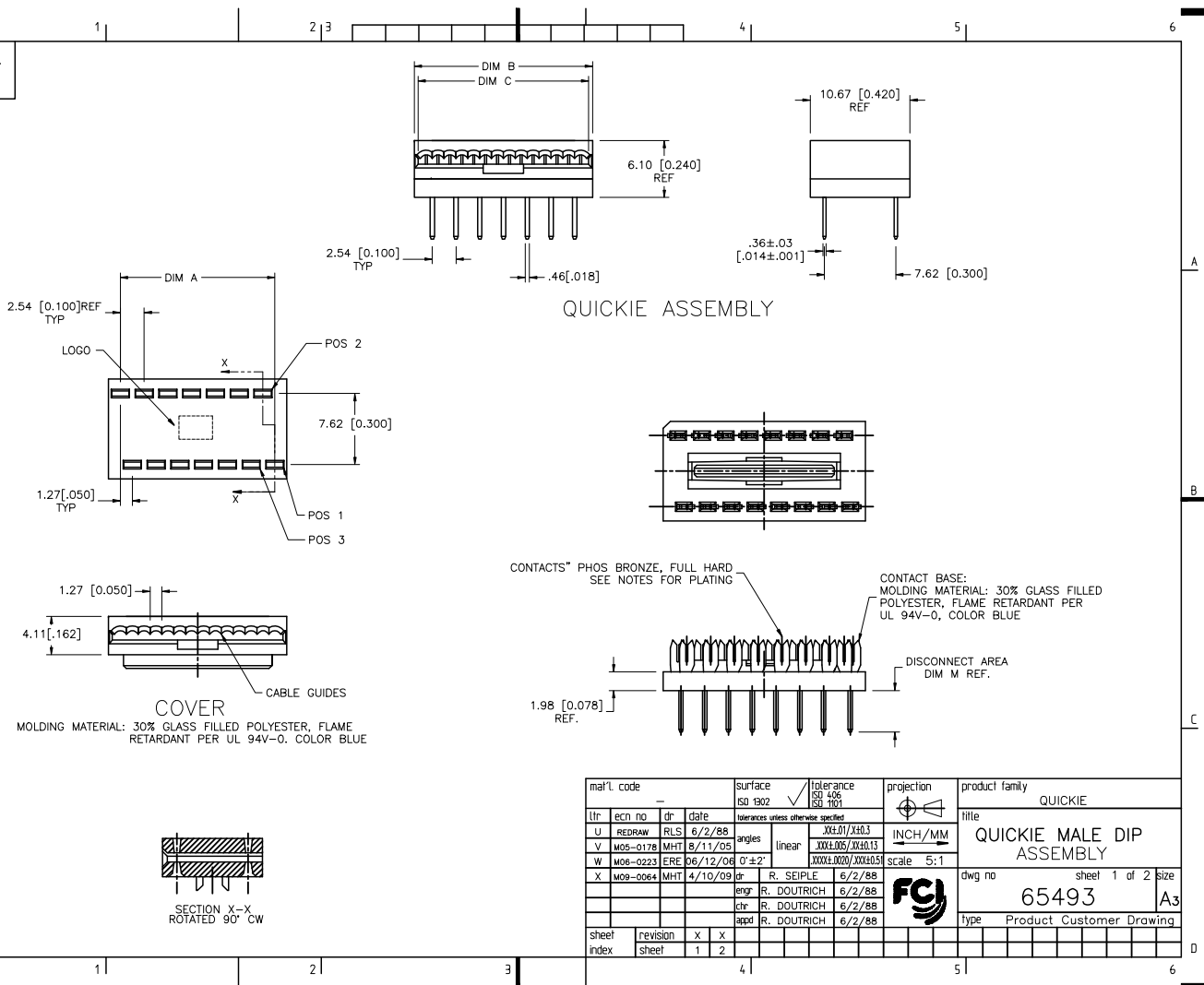


PRODUCT NO.
SEE TABLE



mal't. code		surface		ISO 1902	tolerance	ISO 406	projection	product family
ISO 1001		ISO 1001		XX±01/XX±03	INCH/MM	QUICKIE	title	
ltr	ec'n no	dr	date	tolerances unless otherwise specified		QUICKIE MALE DIP ASSEMBLY		sheet 1 of 2 size
U	REDRAW	RLS	6/2/88	angles	linear	XXX±005/XXX±0.13	A3	
V	M05-0178	MHT	8/11/05	0'±2'	XXX±0.000/XXX±0.05	scale	65493	
W	M08-0223	ERE	06/12/06			5:1	type Product Customer Drawing	
X	M09-0064	MHT	4/10/09	dr	R. SEIPLE	6/2/88	FCJ	
				eng	R. DOUTRICH	6/2/88		
				chr	R. DOUTRICH	6/2/88		
				appd	R. DOUTRICH	6/2/88		
sheet	revision	X	X					
index	sheet	1	2					

PRODUCT NUMBER	SIZE	DIM A	DIM B	DIM M	CONTACT PLATING
65493-002	2 x 7	16.51/.650	18.24/.718	4.45/.175	NOTE 1
-004	2 x 8	19.05/.750	20.78/.818	4.45/.175	NOTE 1
-006	2 x 7	16.51/.650	18.24/.718	4.45/.175	NOTE 2
-008	2 x 8	19.05/.750	20.78/.818	4.45/.175	NOTE 2
-010	2 x 7	16.51/.650	18.24/.718	4.45/.175	NOTE 3
-012	2 x 8	19.05/.750	20.78/.818	4.45/.175	NOTE 3
-014	2 x 7	16.51/.650	18.24/.718	2.67/.105	NOTE 1
-016	2 x 8	19.05/.750	20.78/.818	2.67/.105	NOTE 2
-018	2 x 7	16.51/.650	18.24/.718	2.67/.105	NOTE 2
-020	2 x 8	19.05/.750	20.78/.818	2.67/.105	NOTE 1
-022	2 x 9	21.59/.850	23.32/.918	4.45/.175	NOTE 1
-024	2 x 9	21.59/.850	23.32/.918	4.45/.175	NOTE 2
75493-026	2 x 9	21.59/.850	23.32/.918	4.45/.175	NOTE 3

PRODUCT NUMBER NOTE 5	SIZE	DIM A	DIM B	DIM M	CONTACT PLATING
65493-002LF	2 x 7	16.51/.650	18.24/.718	4.45/.175	NOTE 1
-004LF	2 x 8	19.05/.750	20.78/.818	4.45/.175	NOTE 1
-006LF	2 x 7	16.51/.650	18.24/.718	4.45/.175	NOTE 4
-008LF	2 x 8	19.05/.750	20.78/.818	4.45/.175	NOTE 4
-010LF	2 x 7	16.51/.650	18.24/.718	4.45/.175	NOTE 3
-012LF	2 x 8	19.05/.750	20.78/.818	4.45/.175	NOTE 3
-014LF	2 x 7	16.51/.650	18.24/.718	2.67/.105	NOTE 1
-016LF	2 x 8	19.05/.750	20.78/.818	2.67/.105	NOTE 4
-018LF	2 x 7	16.51/.650	18.24/.718	2.67/.105	NOTE 4
-020LF	2 x 8	19.05/.750	20.78/.818	2.67/.105	NOTE 1
-022LF	2 x 9	21.59/.850	23.32/.918	4.45/.175	NOTE 1
-024LF	2 x 9	21.59/.850	23.32/.918	4.45/.175	NOTE 4
75493-026LF	2 x 9	21.59/.850	23.32/.918	4.45/.175	NOTE 3

NOTES:

- ① 1.27μ/50μ" MIN Ni UNDERPLATE OVER ENTIRE TERMINAL AND .76μ/30μ" MIN Au IN DISCONNECT AREA ONLY.
- ② 3.81μ/150μ" MIN TIN/LEAD 93/7 OVER ENTIRE TERMINAL
- ③ 1.27μ/50μ" MIN Ni UNDERPLATE OVER ENTIRE TERMINAL AND 1.27/50μ" MIN Au IN DISCONNECT AREA ONLY.
- ④ LEAD FREE OPTION: 3.81μ/150μ" MIN PURE TIN OVER ENTIRE TERMINAL
- ⑤ PART NUMBER WITH "LF" SUFFIX AT THE END ARE LEAD FREE OPTION.
6. IF "LF" P/N THE PRODUCT MEETS EUROPEAN UNION DIRECTIVES AND OTHER COUNTRY REGULATION AS DESCRIBED IN GS-22-008.
7. THE PRODUCT IS NOT INTENDED TO BE EXPOSED TO A MANUFACTURING SOLDER PROCESS.

mal't. code		surface		tolerance	projection	product family		
-		ISO 1902		ISO 406		QUICKIE		
-		ISO 1901		ISO 1001		title		
lfr	ecn no	dr	date	tolerances unless otherwise specified		QUICKIE MALE DIP ASSEMBLY		
X				angles	linear	INCH/MM	sheet 2 of 2 size	
							A3	
				0'±2'	XXX±.01/XXX±.03	scale 5:1	dwg no	
					XXX±.005/XXX±.013		65493	
					XXX±.000/XXX±0.51		type	
sheet	revision			dr	R. SEIPLE		6/2/88	Product Customer Drawing
index	sheet			eng	R. DOUTRICH		6/2/88	
				chr	R. DOUTRICH	6/2/88		
				appd	R. DOUTRICH	6/2/88		