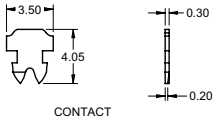
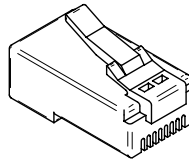
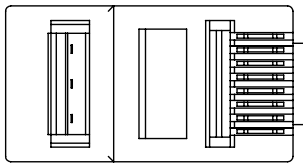
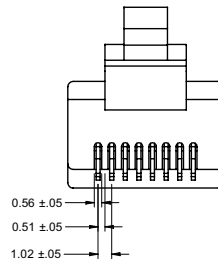
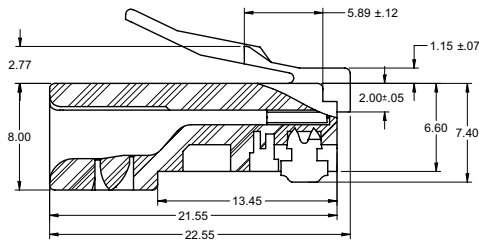
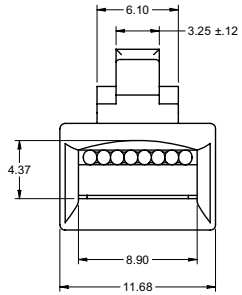
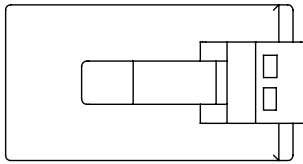


| | | | | | |
|-------------------------------|-----------|-----------|----|------------------|---------|
| 受控 CONTROLLED DOCUMENT | | | | | |
| 编号 P/N | 32-5998UL | 版本 Rev | 01 | 日期 Rel'd Date | May8,09 |

| | |
|--|----------|
| DRAWING NO. 32-5998UL | |
| REVISIONS | |
| 01 | 04-01-09 |
| <small>Thomas G 2008.03.13 14:47:00 0819</small> | |



NOTES:

1. ELECTRICAL SPECIFICATIONS

INSULATION RESISTANCE: 1000 MEGOHMS
WITHSTAND VOLTAGE: 1000V_{AC}/MINUTE

2. MECHANICAL SPECIFICATIONS

CONTACT MATERIAL: PHOSPHOR BRONZE 0.3MM THICKNESS
CONTACT PLATING: 50 MICRO-INCH GOLD PLATE OVER 100
MICRO-INCH NICKEL PLATING
HOUSING MATERIAL: POLYCARBONATE
DURABILITY: 1000 CYCLES MIN
UL FLAMABILITY RATING: 94-V0

3. ENVIRONMENTAL SPECIFICATIONS

TEMPERATURE RANGE: -40 °C TO +70 °C

4. FOR FLAT OVAL OR ROUND CABLE

5. FOR SOLID OR STRANDED WIRE APPLICATIONS

THIS DRAWING TO BE INTERPRETED
PER ANSI Y 14.5M - 1994

COMPANY CONFIDENTIAL

| | | | |
|--|--------|-------------|----------|
| TOLERANCE UNLESS OTHERWISE SPECIFIED | | DRAWN BY | DATE |
| DECIMALS | mm | TERRY.W | 04-01-09 |
| X | ± 0.5 | CHECKED BY | DATE |
| X.X | ± 0.15 | IVON.W | 04-01-09 |
| XXX | ± 0.10 | APPROVED BY | DATE |
| ANGLES | ± 0.5° | THOMAS | 04-01-09 |
| | | U/M | mm |
| <small>THIS DRAWING WAS PRODUCED BY COMPUTER, DO NOT SCALE DRAWING OR UPDATE MANUALLY.</small> | | | |

| | | | |
|--|--------------------------|-------------------------------|--|
| EMERSON Network Power | | Connectivity Solutions | |
| TITLE RJ45 MOD PLUG 50°U,SOL/STR,FLAT | | | |
| SHEET 1 OF 1 | DRAWING NO. 32-5998UL | SIZE C | |