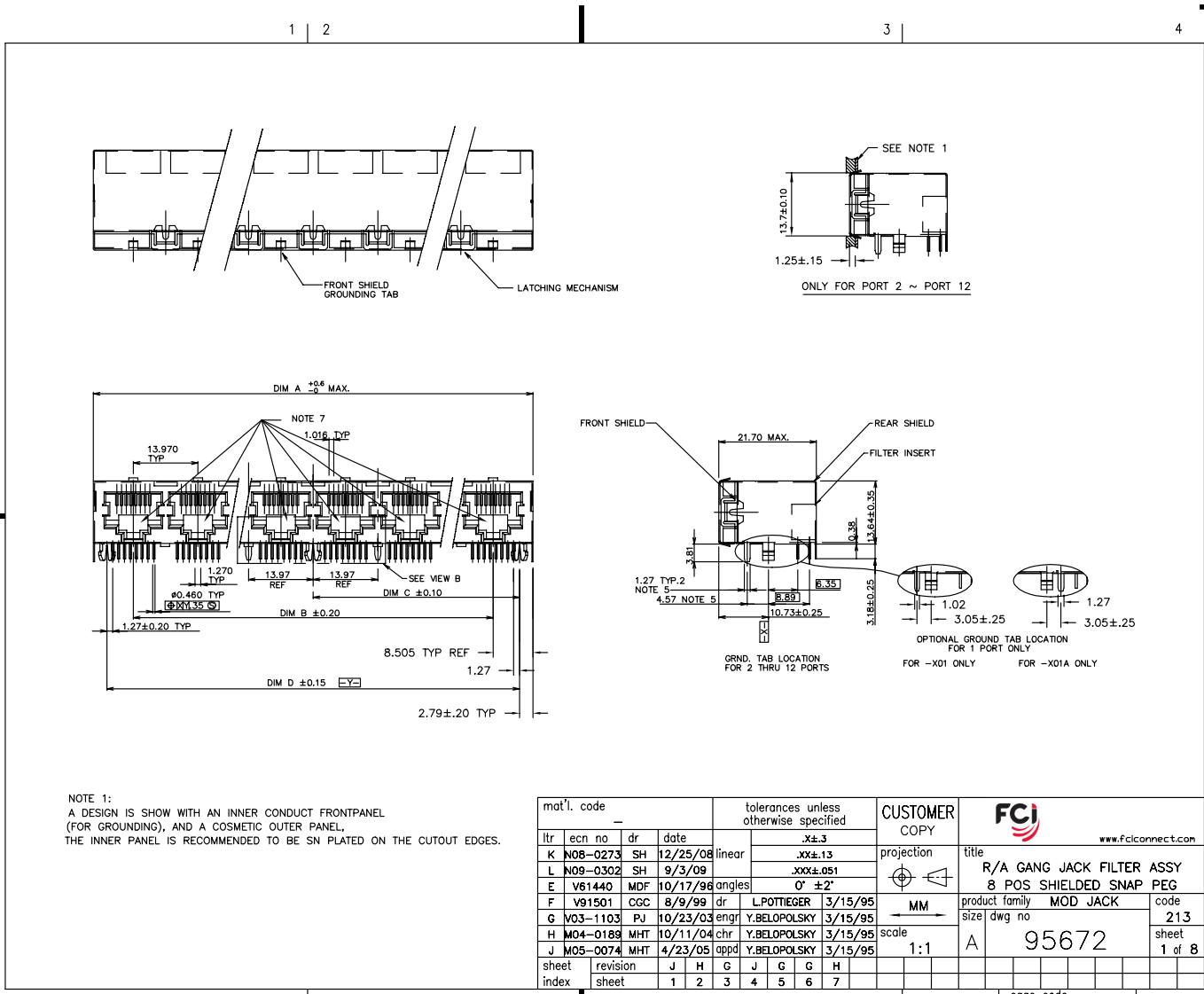


Tous droits strictement réservés. Reproduction ou communication à des tiers interdite sous quelque forme que ce soit sans autorisation écrite du propriétaire. Propriété de c FCI. Droits de reproduction FCI.



All rights strictly reserved. Reproduction or issue to third parties in any form whatever is not permitted without written authority from the proprietor. Property of FCI. Copyright FCI.



NOTE 1:
A DESIGN IS SHOW WITH AN INNER CONDUCT FRONTPANEL (FOR GROUNDING), AND A COSMETIC OUTER PANEL. THE INNER PANEL IS RECOMMENDED TO BE SN PLATED ON THE CUTOUT EDGES.

mat'l. code		tolerances unless otherwise specified		CUSTOMER COPY		www.fciconnect.com	
ltr	ecn no	dr	date	linear	projection	title	
K	N08-0273	SH	12/25/08	.XX±.13		R/A GANG JACK FILTER ASSY	
L	N09-0302	SH	9/3/09	.XXX±.051		8 POS SHIELDED SNAP PEG	
E	V61440	MDF	10/17/96	0° ±2'	MM	product family	MOD JACK
F	V91501	CGC	8/9/99	dr	scale	size	code
G	V03-1103	PJ	10/23/03	engr	1:1	dwg no	213
H	M04-0188	MHT	10/11/04	chr		95672	sheet
J	M05-0074	MHT	4/23/05	appd			1 of 8
sheet index	revision	J	H	G	J	G	H
sheet	1	2	3	4	5	6	7

ACAD

PDM: Rev:L 3 STATUS:Released cage code 2252 Printed Aug 01, 2010

Tous droits strictement réservés. Reproduction ou communication à des tiers interdite sous quelque forme que ce soit sans autorisation écrite du propriétaire. Property of FCI. Droits de reproduction FCI.



All rights strictly reserved. Reproduction or issue to third parties in any form whatever is not permitted without written authority from the proprietor. Property of FCI. Copyright FCI.

PRODUCT No.	NOTE 8	PORTS No	DIM A ± 0.60 -0.00	DIM B	DIM C ± 0.10	DIM D ± 0.15	GROUND LEG NUMBER ON THE BACK (VIEW B) SEE DIAGRAM ON SH. 3
95672-X01		1	15.74	-	5.715	11.43	
95672-X01A		1	15.74	-	5.715	11.43	
95672-X02 -YZ		2	30.98	13.97	12.700	25.40	
95672-X03 -YZ		3	44.95	27.94	19.685	39.37	
95672-X04 -YZ		4	58.92	41.91	26.670	53.34	
95672-X05 -YZ		5	72.89	55.88	33.655	67.31	
95672-X06 -YZ		6	86.86	69.85	40.640	81.28	
95672-X07 -YZ		7	100.83	83.82	47.625	95.25	
95672-X08 -YZ		8	114.80	97.79	54.610	109.22	
95672-X09 -YZ		9	128.77	111.76	61.595	123.19	
95672-X10 -YZ		10	142.74	125.73	68.580	137.16	
95672-X11 -YZ		11	156.71	139.70	75.565	151.13	
95672-X12 -YZ		12	170.68	153.67	82.550	165.10	

NOTE 5
NOTE 5

NOTES:

1. RECOMMENDED P.C.B THICKNESS 1.60 MM
2. HOUSING MAT'L: HIGH TEMP RESIN
3. CONTACTS: PHOS BRONZE ALLOY UNS-C51000, \emptyset 0.460 ROUND WIRE, PLATING SEE TABLE.
4. SHIELDING MATERIAL: BRASS ALLOY .25 MM THICK SHIELDING PLATING: NICKEL UNDERPLATE 40u" MIN FINISH OF BRIGHT TIN LEAD 100u" MIN
LEAD FREE OPTION
SHIELDING PLATING: NICKEL UNDERPLATE 40u" MIN FINISH OF BRIGHT PURE TIN 100u" MIN
- ⑤ SEE SNGL. PORT GROUND LEG OPTIONS, SIDE VIEW PG.1 FOR DETAILS.
6. ALL DIMENSIONS IN MILLIMETERS.
- ⑦ COMPANY LOGO LOCATED IN THIS AREA.
- ⑧ ADD LF SUFFIX AT THE END OF PART NUMBER FOR LEAD FREE OPTION.
9. THE HOUSING WILL WITHSTAND EXPOSURE TO 260°C PEAK TEMPERATURE FOR 15 SECONDS IN A WAVE SOLDER APPLICATION WITH A 1.5mm MINIMUM THICK CIRCUIT BOARD. SEE APPLICATION NOTES/PROCEDURES IF THEY ARE AVAILABLE.
10. THIS PRODUCT MEETS EUROPEAN UNION DIRECTIVES AND OTHER COUNTRY REGULATION AS DESCRIBED IN GS-22-008.
- ⑪ PLATING OPTIONS:
MAY BE EITHER GOLD OR GXT PLATED AT MANUFACTURER'S OPTION.

PLATING CODE X	PLATING ⑪
0	30u" G.X.T.
1	15u" GOLD.
3	30u" GOLD.
5	50u" GOLD.

FRONT SHIELD CODE Y
0 = STANDARD GRND. TABS
1 = NO GRND. TABS

REAR SHIELD CODE Z
0 = STANDARD GRND. LEGS
1 = 1 STANDARD GRND. LEG
2 = ALL GRND. LEGS
3 = NO GRND. LEGS

NOTE: PLEASE CHECK FOR AVAILABILITY, NOT ALL OPTIONS AVAILABLE.

mat'l. code		tolerances unless otherwise specified		CUSTOMER COPY		FCI		www.fciconnect.com	
ltr	ecn no	dr	date	linear	projection	title			
L					$\oplus \leftarrow$	R/A GANG JACK FILTER ASSY			
				angles		8 POS SHIELDED SNAP PEG			
				dr	L.POTTIEGER 3/15/95	MM	product family	MOD JACK	code
				enr	Y.BELOPOLSKY 3/15/95	scale	size	dwg no	213
				chr	Y.BELOPOLSKY 3/15/95	1:1	A	95672	sheet
				appd	Y.BELOPOLSKY 3/15/95				2 of 8
sheet index	revision sheet								

ACAD

PDM: Rev:L 3

STATUS: Released Printed Aug 01, 2010

1 | 2

3 |

4

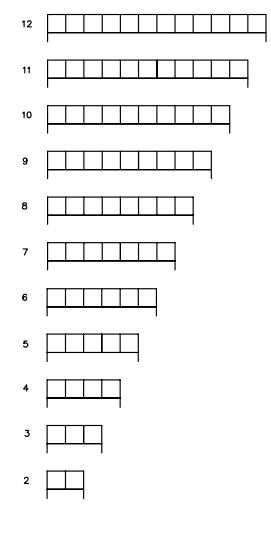
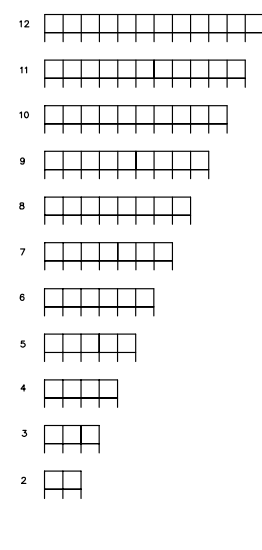
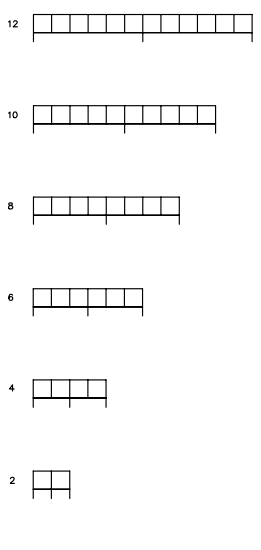
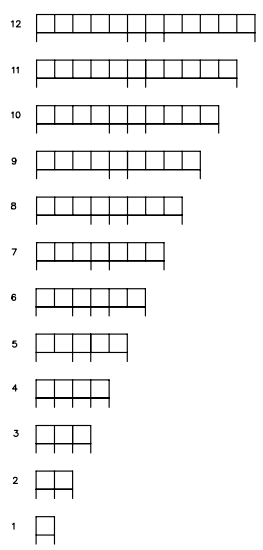
REAR SHIELD (VIEWED FROM PLUG ENTRY SIDE)
GROUND SOLDERTAIL CONFIGURATION

CODE "Z" = 0

CODE "Z" = 1

CODE "Z" = 2

CODE "Z" = 3



PCB LAYOUT SHEET 4

PCB LAYOUT SHEET 5

PCB LAYOUT SHEET 6

PCB LAYOUT SHEET 7

Tous droits strictement réservés. Reproduction ou communication à des tiers sans autorisation écrite de FCI. Propriété de FCI. Droits de reproduction FCI.



All rights strictly reserved. Reproduction or issue to third parties in any form or by any means without written authority from the proprietor. Property of FCI. Copyright FCI.

mat'l. code		tolerances unless otherwise specified		CUSTOMER COPY		FCI www.fciconnect.com	
ltr	ecn no	dr	date	linear	projection	title	
L				.XX±.13		R/A GANG JACK FILTER ASSY	
				.XXX±.051		8 POS SHIELDED SNAP PEG	
				0° ±2°		product family MOD JACK	
		dr	G.CLEMENS 6/30/99	en	B.BRUBAKER 6/30/99	size	dwg no
		chr	B.BRUBAKER 6/30/99	appd	B.BRUBAKER 6/30/99	scale	code
						1:4	213
sheet index	revision sheet						sheet 3 of 8

1 | 2

ACAD

PDM: Rev:L 3

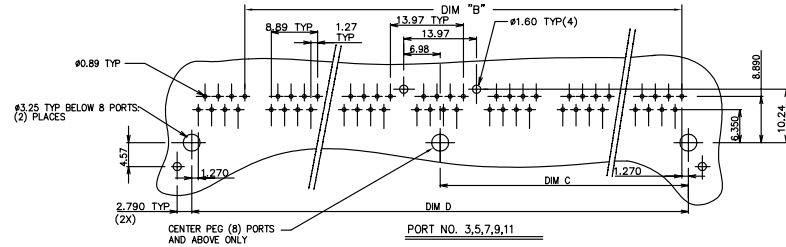
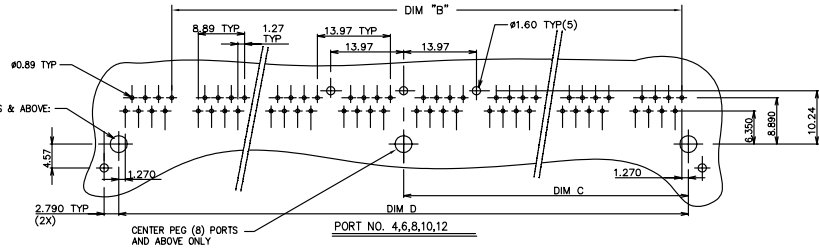
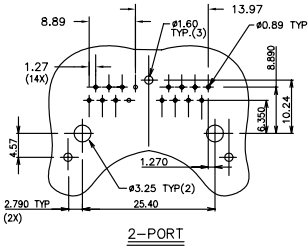
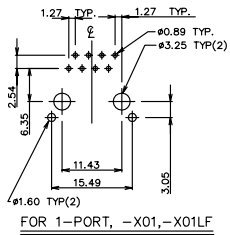
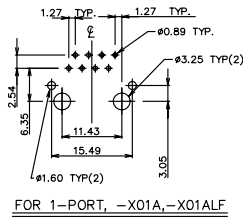
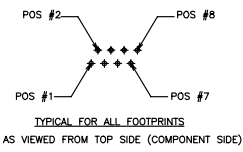
STATUS: Released

Printed: Aug 01, 2010

Tous droits strictement réservés. Reproduction ou communication à des tiers interdite sous quelque forme que ce soit sans autorisation écrite du propriétaire. Propriété de c FCI. Droits de reproduction FCI.



All rights strictly reserved. Reproduction or issue to third parties in any form whatever is not permitted without written authority from the proprietor. Property of FCI. Copyright FCI.



RECOMMENDED P.C.B LAYOUT
CODE "Z" = Ø (STANDARD GROUND LEGS)

mat'l. code		tolerances unless otherwise specified		CUSTOMER COPY		FCI		www.fciconnect.com		
ltr	ecn no	dr	date	linear	.XX±.13	projection	title	product family	MOD JACK	code
L				angles	.XX±.051					
				dr	0° ±2°	MM	dwg no	4 of 8		
				engr	L.POTTIEGER 3/15/95				scale	A
				chr	Y.BELOPOLSKY 3/15/95	1:1				
				appd	Y.BELOPOLSKY 3/15/95					
sheet	revision									
index	sheet									

ACAD

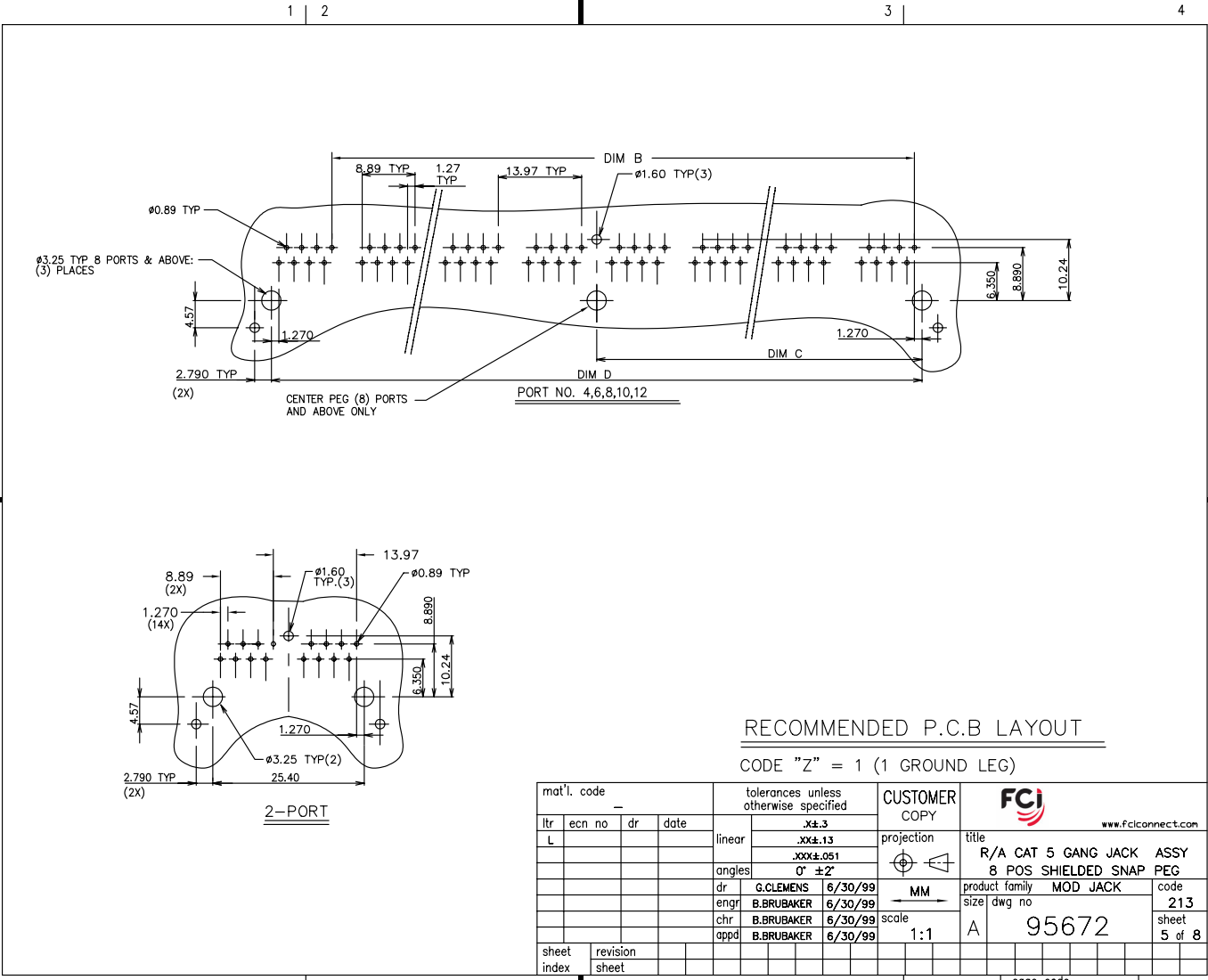
PDM: Rev:L 3

STATUS: Released 2252 Printed Aug 01, 2010

Tous droits strictement réservés. Reproduction ou communication à des tiers interdite sous quelque forme que ce soit sans autorisation écrite du propriétaire. Propriété de c FCI. Droits de reproduction FCI.



All rights strictly reserved. Reproduction or issue to third parties in any form whatever is not permitted without written authority from the proprietor. Property of FCI. Copyright FCI.



RECOMMENDED P.C.B LAYOUT

CODE "Z" = 1 (1 GROUND LEG)

mat'l. code		tolerances unless otherwise specified		CUSTOMER COPY		 www.fciconnect.com	
ltr	ecn no	dr	date	linear	.XX±.13	projection	title
L					.XXX±.051		R/A CAT 5 GANG JACK ASSY
				angles	0° ±2'		8 POS SHIELDED SNAP PEG
				dr	G.CLEMENS 6/30/99	MM	product family MOD JACK
				enrg	B.BRUBAKER 6/30/99	scale	size dwg no
				chr	B.BRUBAKER 6/30/99	1:1	213
				appd	B.BRUBAKER 6/30/99	A	95672
sheet index	revision sheet						code 2252
							5 of 8

ACAD

PDM: Rev:L 3

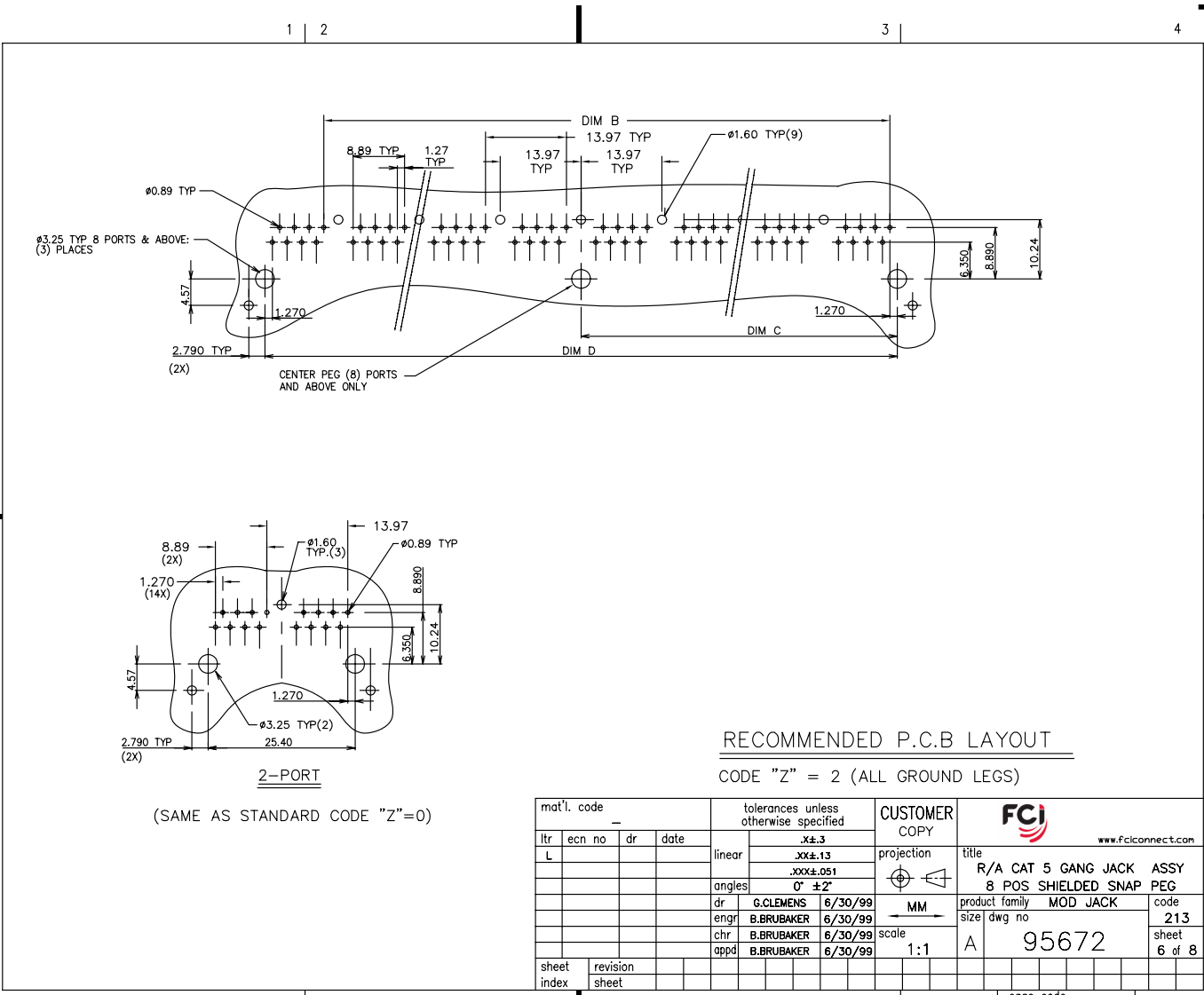
STATUS: Released

Printed: Aug 01, 2010

Tous droits strictement réservés. Reproduction ou communication à des tiers interdite sous quelque forme que ce soit sans autorisation écrite du propriétaire. Propriété de c FCI. Droits de reproduction FCI.



All rights strictly reserved. Reproduction or issue to third parties in any form whatever is not permitted without written authority from the proprietor. Property of FCI. Copyright FCI.



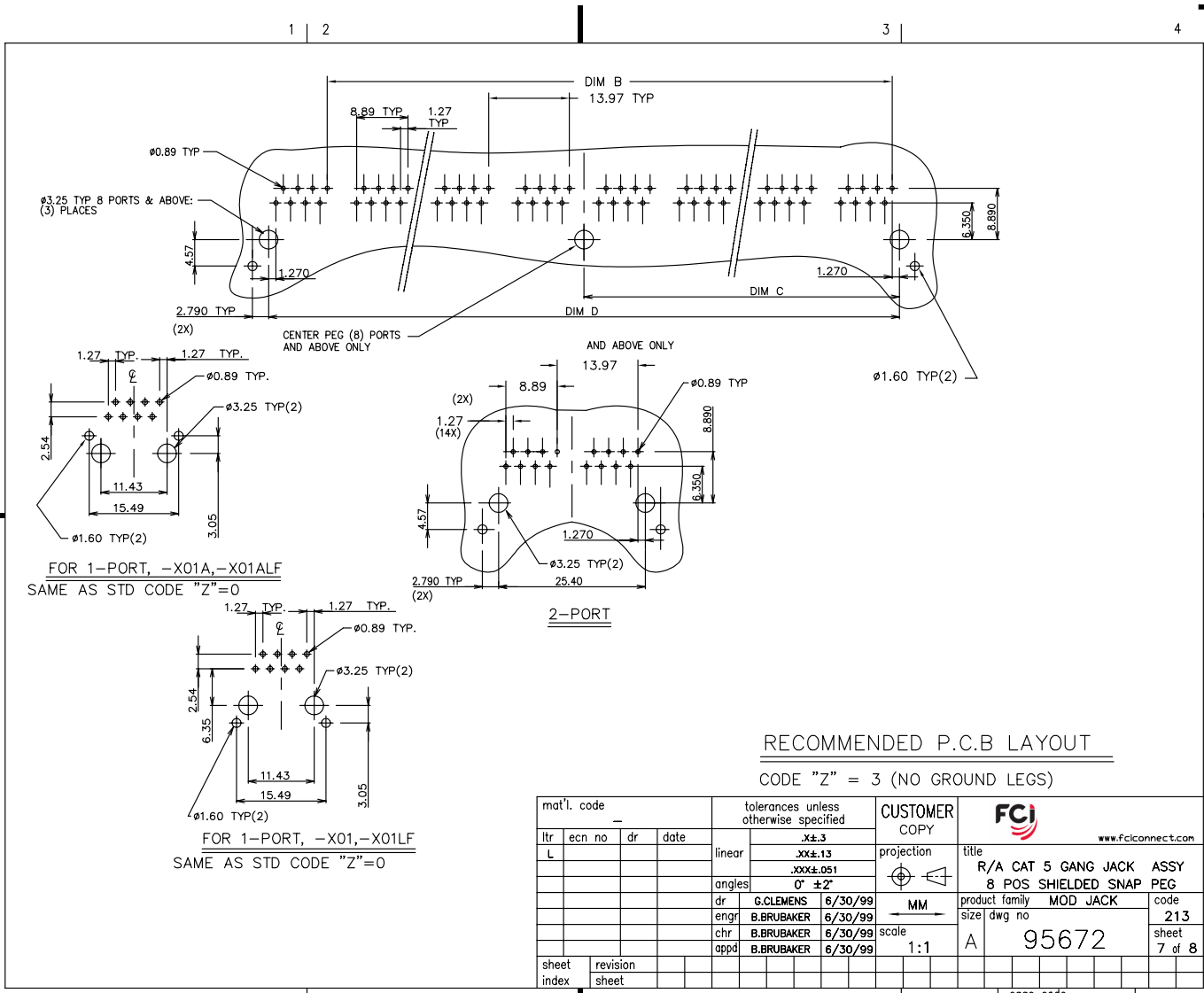
RECOMMENDED P.C.B LAYOUT
CODE "Z" = 2 (ALL GROUND LEGS)

mat'l. code		tolerances unless otherwise specified		CUSTOMER COPY		FCI		www.fciconnect.com		
ltr	ecn no	dr	date	linear	.XX±.13	projection	title	R/A CAT 5 GANG JACK ASSY		
L				angles	.XXX±.051		8 POS SHIELDED SNAP PEG	code		
					0° ±2'			product family	MOD JACK	213
				dr	G.CLEMENS 6/30/99	MM	size	dwg no	213	
				engr	B.BRUBAKER 6/30/99	scale	A	95672	sheet	
				chr	B.BRUBAKER 6/30/99	1:1			6 of 8	
				appd	B.BRUBAKER 6/30/99					
sheet index	revision sheet									

Tous droits strictement réservés. Reproduction ou communication à des tiers interdite sous quelque forme que ce soit sans autorisation écrite du propriétaire. Propriété de c FCI. Droits de reproduction FCI.



All rights strictly reserved. Reproduction or issue to third parties in any form whatever is not permitted without written authority from the proprietor. Property of FCI. Copyright FCI.



FOR 1-PORT, -X01A,-X01ALF
SAME AS STD CODE "Z"=0

2-PORT

FOR 1-PORT, -X01,-X01LF
SAME AS STD CODE "Z"=0

RECOMMENDED P.C.B LAYOUT

CODE "Z" = 3 (NO GROUND LEGS)

mat'l. code		tolerances unless otherwise specified		CUSTOMER COPY		FCI		www.fciconnect.com	
ltr	ecn no	dr	date	linear	angles	projection	title	R/A CAT 5 GANG JACK ASSY	
L								8 POS SHIELDED SNAP PEG	
				dr	engr	chr	appd	product family	MOD JACK
				G.CLEMENS	6/30/99	B.BRUBAKER	6/30/99	size	dwg no
				B.BRUBAKER	6/30/99	B.BRUBAKER	6/30/99	code	213
				B.BRUBAKER	6/30/99	B.BRUBAKER	6/30/99	sheet	7 of 8
sheet index	revision	sheet						scale	1:1
								code	95672
								status	Released

ACAD

PDM: Rev:L 3

STATUS: Released 2252 Printed: Aug 01, 2010

Tous droits strictement réservés. Reproduction ou communication à des tiers interdite sous quelque forme que ce soit sans autorisation écrite du propriétaire. Propriété de c FCI. Droits de reproduction FCI.



All rights strictly reserved. Reproduction or issue to third parties in any form whatever is not permitted without written authority from the proprietor. Property of FCI. Copyright FCI.

PRODUCT No.	NOTE 8	PORTS No	DIM A ± 0.60 -0.00	DIM B	DIM C ± 0.10	DIM D ± 0.15	GROUND LEG NUMBER ON THE BACK (VIEW B) SEE DIAGRAM ON SH. 3
95672-X01H		1	15.74	-	5.715	11.43	
95672-X01AH		1	15.74	-	5.715	11.43	
95672-X02H-YZ		2	30.98	13.97	12.700	25.40	
95672-X03H-YZ		3	44.95	27.94	19.685	39.37	
95672-X04H-YZ		4	58.92	41.91	26.670	53.34	
95672-X05H-YZ		5	72.89	55.88	33.655	67.31	
95672-X06H-YZ		6	86.86	69.85	40.640	81.28	
95672-X07H-YZ		7	100.83	83.82	47.625	95.25	
95672-X08H-YZ		8	114.80	97.79	54.610	109.22	
95672-X09H-YZ		9	128.77	111.76	61.595	123.19	
95672-X10H-YZ		10	142.74	125.73	68.580	137.16	
95672-X11H-YZ		11	156.71	139.70	75.565	151.13	
95672-X12H-YZ		12	170.68	153.67	82.550	165.10	

NOTE 5
NOTE 5

NOTES:

1. RECOMMENDED P.C.B THICKNESS 1.60 MM
2. HOUSING MAT'L: HIGH TEMP RESIN
3. CONTACTS: PHOS BRONZE ALLOY UNS-C51000, \emptyset 0.460 ROUND WIRE, PLATING SEE TABLE.
4. SHIELDING MATERIAL: BRASS ALLOY .25 MM THICK SHIELDING PLATING: NICKEL UNDERPLATE 40u" MIN FINISH OF BRIGHT TIN LEAD 100u" MIN
LEAD FREE OPTION
SHIELDING PLATING: NICKEL UNDERPLATE 40u" MIN FINISH OF BRIGHT PURE TIN 100u" MIN
- ⑤ SEE SNGL. PORT GROUND LEG OPTIONS, SIDE VIEW PG.1 FOR DETAILS.
6. ALL DIMENSIONS IN MILLIMETERS.
- ⑦ COMPANY LOGO LOCATED IN THIS AREA.
- ⑧ ADD LF SUFFIX AT THE END OF PART NUMBER FOR LEAD FREE OPTION.
9. THE HOUSING WILL WITHSTAND EXPOSURE TO 260°C PEAK TEMPERATURE FOR 15 SECONDS IN A WAVE SOLDER APPLICATION WITH A 1.5mm MINIMUM THICK CIRCUIT BOARD. SEE APPLICATION NOTES/PROCEDURES IF THEY ARE AVAILABLE.
10. THIS PRODUCT MEETS EUROPEAN UNION DIRECTIVES AND OTHER COUNTRY REGULATION AS DESCRIBED IN GS-22-008.
- ⑪ PLATING OPTIONS:
MAY BE EITHER GOLD OR GXT PLATED AT MANUFACTURER'S OPTION.

MEETS PIP PROCESS PRODUCT NO.

PLATING CODE X	PLATING ⑪
0	30u" G.X.T.
1	15u" GOLD.
3	30u" GOLD.
5	50u" GOLD.

FRONT SHIELD CODE Y
0 = STANDARD GRND. TABS
1 = NO GRND. TABS

REAR SHIELD CODE Z
0 = STANDARD GRND. LEGS
1 = 1 STANDARD GRND. LEG
2 = ALL GRND. LEGS
3 = NO GRND. LEGS

NOTE: PLEASE CHECK FOR AVAILABILITY, NOT ALL OPTIONS AVAILABLE.

mat'l. code		tolerances unless otherwise specified		CUSTOMER COPY		FCI		www.fciconnect.com	
ltr	ecr no	dr	date	linear	projection	title			
						R/A GANG JACK FILTER ASSY			
				angles		8 POS SHIELDED SNAP PEG			
				dr	L.POTTIEGER	3/15/95	product family	MOD JACK	code
				enr	Y.BELOPOLSKY	3/15/95	size	dwg no	213
				chr	Y.BELOPOLSKY	3/15/95	scale	95672	sheet
				appd	Y.BELOPOLSKY	3/15/95	1:1	A	8 of 8
sheet index	revision sheet								

1 | 2

ACAD

PDM: Rev:L 3

STATUS: Released 2252 Printed Aug 01, 2010

4

3

1 | 2