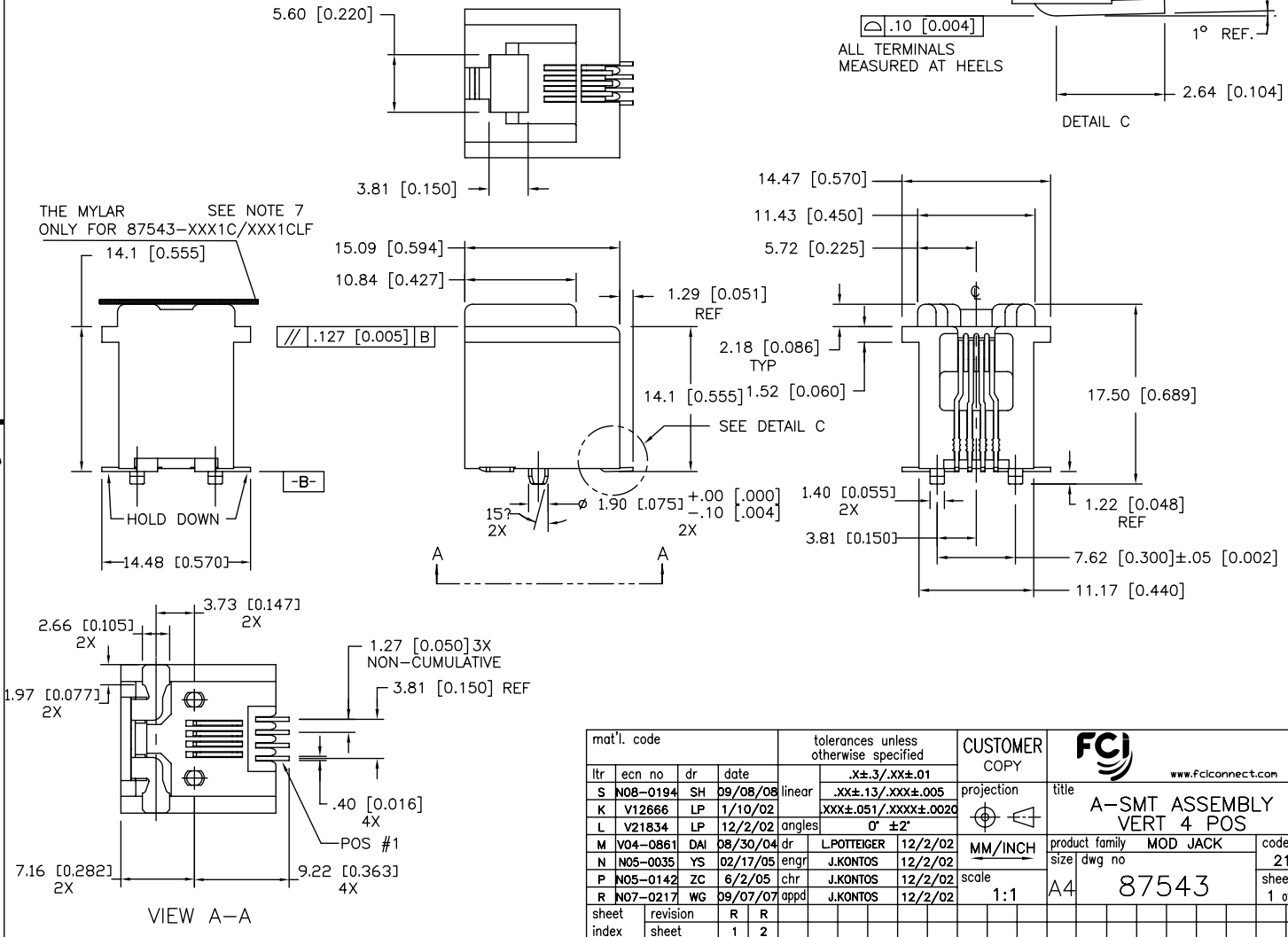


Tous droits strictement réservés. Reproduction ou communication à des tiers interdite sous quelque forme que ce soit sans autorisation écrite du propriétaire. Propriété de c FCI. Droits de reproduction FCI.

PRODUCT NO.
 SEE TABLE



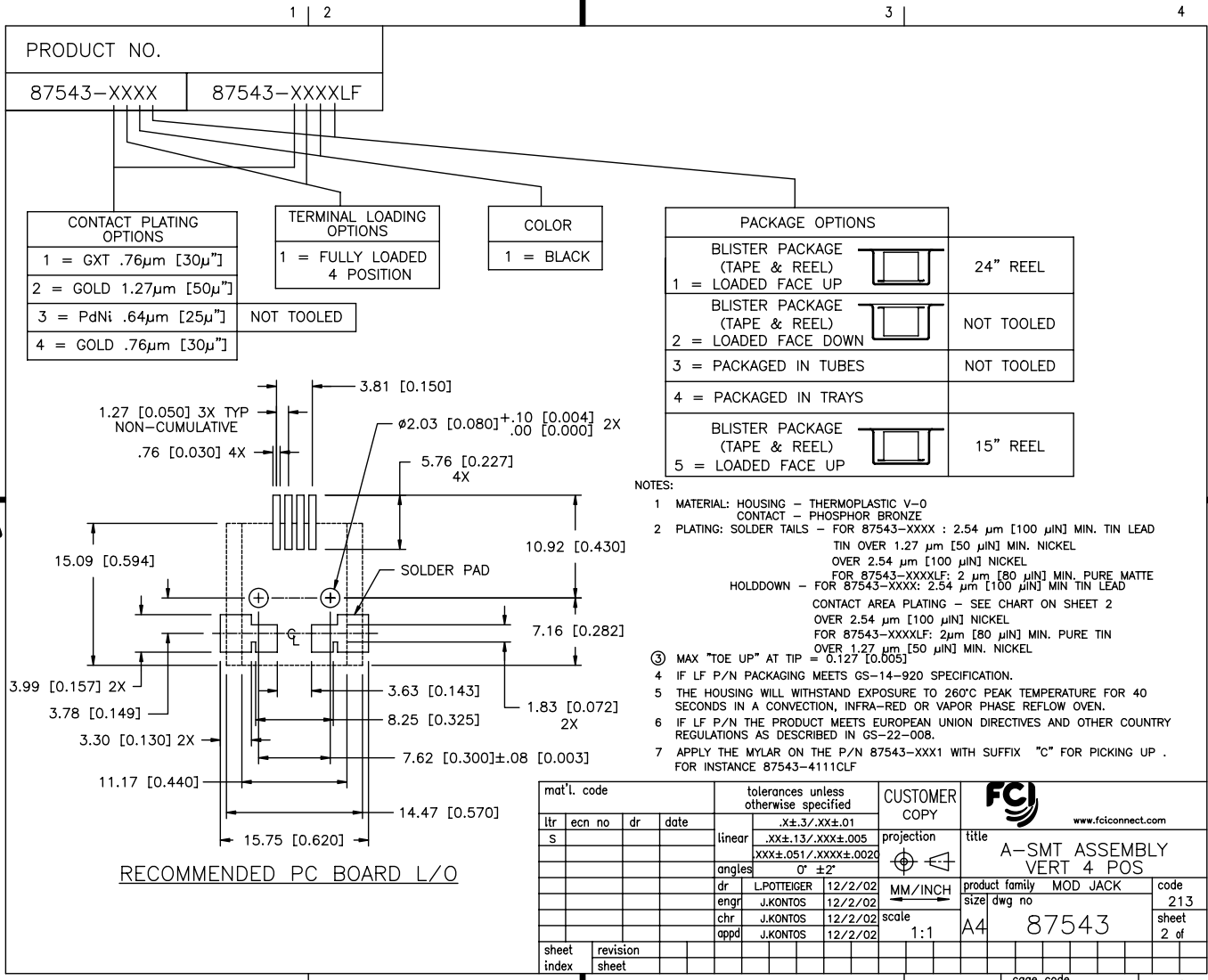
mat'l. code				tolerances unless otherwise specified		CUSTOMER COPY	FCJ www.fciconnect.com
ltr	ecn no	dr	date	linear	angular		
S	N08-0194	SH	09/08/08	.XX±.3/.XX±.01	.XX±.13/.XXX±.005		A-SMT ASSEMBLY VERT 4 POS
K	V12666	LP	1/10/02	.XXX±.051/.XXX±.0020	0° ±2'		product family MOD JACK
L	V21834	LP	12/2/02			MM/INCH	size dwg no
M	V04-0861	DAI	08/30/04	dr	L.POTTEIGER	12/2/02	87543
N	N05-0035	YS	02/17/05	enr	J.KONTOS	12/2/02	sheet 1 of 2
P	N05-0142	ZC	6/2/05	chr	J.KONTOS	12/2/02	
R	N07-0217	WG	09/07/07	appd	J.KONTOS	12/2/02	
sheet index	revision sheet	R	R				
		1	2				

ACAD PDM: Rev:S STATUS: Released cage code 22506 Aug 01, 2010

Tous droits strictement réservés. Reproduction ou communication à des tiers interdite sous quelque forme que ce soit sans autorisation écrite du propriétaire. Propriété de c FCI. Droits de reproduction FCI.



All rights strictly reserved. Reproduction or issue to third parties in any form whatever is not permitted without written authority from the proprietor. Property of FCI. Copyright FCI.



PRODUCT NO.	
87543-XXXX	87543-XXXXLF

CONTACT PLATING OPTIONS	
1 = GXT .76µm [30µ"]	
2 = GOLD 1.27µm [50µ"]	
3 = PdNi .64µm [25µ"]	
4 = GOLD .76µm [30µ"]	

TERMINAL LOADING OPTIONS	
1 = FULLY LOADED	
4 POSITION	
NOT TOOLED	

COLOR	
1 = BLACK	

PACKAGE OPTIONS		
BLISTER PACKAGE (TAPE & REEL)		24" REEL
1 = LOADED FACE UP		
BLISTER PACKAGE (TAPE & REEL)		NOT TOOLED
2 = LOADED FACE DOWN		
3 = PACKAGED IN TUBES		NOT TOOLED
4 = PACKAGED IN TRAYS		
BLISTER PACKAGE (TAPE & REEL)		15" REEL
5 = LOADED FACE UP		

- NOTES:
- MATERIAL: HOUSING - THERMOPLASTIC V-0
CONTACT - PHOSPHOR BRONZE
 - PLATING: SOLDER TAILS - FOR 87543-XXXX : 2.54 µm [100 µIN] MIN. TIN LEAD
TIN OVER 1.27 µm [50 µIN] MIN. NICKEL
OVER 2.54 µm [100 µIN] NICKEL
FOR 87543-XXXXLF: 2 µm [80 µIN] MIN. PURE MATTE
HOLDDOWN - FOR 87543-XXXX: 2.54 µm [100 µIN] MIN TIN LEAD
CONTACT AREA PLATING - SEE CHART ON SHEET 2
OVER 2.54 µm [100 µIN] NICKEL
FOR 87543-XXXXLF: 2µm [80 µIN] MIN. PURE TIN
OVER 1.27 µm [50 µIN] MIN. NICKEL
 - MAX "TOE UP" AT TIP = 0.127 [0.005]
 - IF LF P/N PACKAGING MEETS GS-14-920 SPECIFICATION.
 - THE HOUSING WILL WITHSTAND EXPOSURE TO 260°C PEAK TEMPERATURE FOR 40 SECONDS IN A CONVECTION, INFRA-RED OR VAPOR PHASE REFLOW OVEN.
 - IF LF P/N THE PRODUCT MEETS EUROPEAN UNION DIRECTIVES AND OTHER COUNTRY REGULATIONS AS DESCRIBED IN GS-22-008.
 - APPLY THE MYLAR ON THE P/N 87543-XXX1 WITH SUFFIX "C" FOR PICKING UP .
FOR INSTANCE 87543-4111CLF

RECOMMENDED PC BOARD L/O

mat'l. code		tolerances unless otherwise specified		CUSTOMER COPY		FCI www.fciconnect.com	
ltr	ecn no	dr	date	linear	.XX±.13/.XXX±.005	projection	title
S				angles	XXX±.051/.XXX±.0020		A-SMT ASSEMBLY VERT 4 POS
				dr	L.POTTEIGER 12/2/02	MM/INCH	product family MOD JACK
				enrg	J.KONTOS 12/2/02	scale	code 213
				chr	J.KONTOS 12/2/02	1:1	size/ dwg no
				appd	J.KONTOS 12/2/02		87543
sheet index	revision sheet						sheet 2 of

ACAD

PDM: Rev: 5

STATUS: Released 2006 Printed: Aug 03, 2006