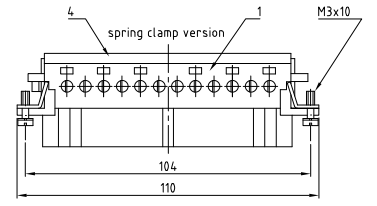
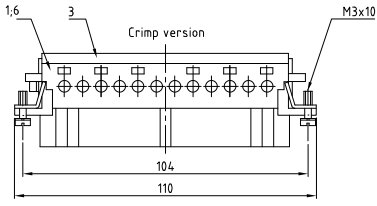
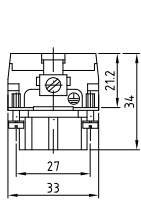
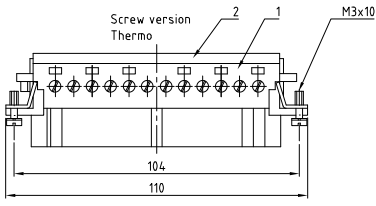
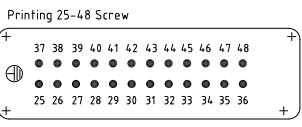
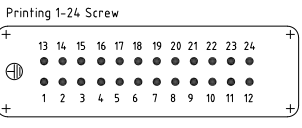
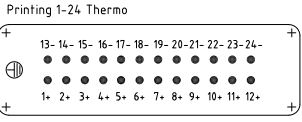


THIS DRAWING IS UNPUBLISHED. VERBAALDE ONVEREENKOME ZEKERING. RELEASED FOR PUBLICATION. PUBLISHED BY AMP INCORPORATED. ALL RIGHTS RESERVED. ALLE RECHTEN VERBEHALTEN. 2000. PAPER WITH PASTING ON. HE

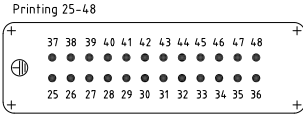
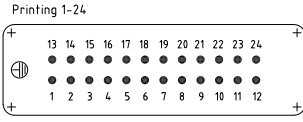
LOC	QST	REVISIONS	DATE	BY	APPD
AI	-	DESCRIPTION			
		DESCRIPTION			
		REVISIONS			
PROPERTY NO.	E1	Text for packaging corrected ECR-98-01868	23.01.08	SR	ST



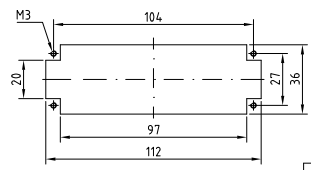
Contact arrangement view from termination side



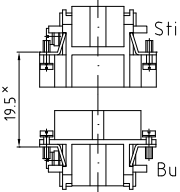
Contact arrangement view from termination side



Panel cut-out for contact insert when used without housing

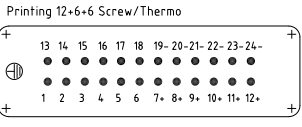


assembly directions



x distance for a safe contact max: max: 21 mm

- NOTES:
- SUITABLE CRIMP CONTACTS: SERIES HE/HA OUTER DIMENSIONS OF INSULATION: MAX. Ø3.2 MM
 - SUITABLE HOOD SIZE 8-12: SERIES HB; HD; HIP; SUITABLE INSERTION AND EXTRACTION TOOL: SCREWDRIVER 0,5x3 DIN 5264
 - Strip length: Screw connection 10mm Spring clamp connection 10mm Crimp connection 7.5mm
 - STANDARDS: DIN EN 61984; DIN EN 60664-1
- ⚠ PACKAGING: 5 SETS IN A CARTON, PRE-MOUNTED
- ⚠ SPECIAL PACKAGING: Krauss-Maffei PACKAGING UNIT: 220 PIECES



QTY	DESCRIPTION / BENENNUNG	MATERIAL	COLOR / FARBE	ITEM NO. FOR
1	Socket contact		light grey	5
1	Deckel Federklemmversion		light grey	4
1	Crimp Crimp version		light grey	3
1	Cover screw version		light grey	2
1	Buchsenensatz		light grey	1

QTY	DESCRIPTION / BENENNUNG	MATERIAL	COLOR / FARBE	ITEM NO. FOR
1	HE 24 BUS-BT-24 KM			
1	HE 24 BUS-C-3 BT-24			
1	HE 24 BUS-SC-AU BT-24			
1	HE 24 BUS-TB 12+6+6			
1	HE 24 BUS-AU BT25-48			
1	HE 24 BUS-SC BT25-48			
1	HE 24 BUS-C BT-24			
1	HE 24 BUS-CB 25-48			
1	HE 24 BUS-CB 12			
1	HE 24 BUS-TB 25-48			
1	HE 24 BUS BT-24			

<p>IT IS THE BUYER'S RESPONSIBILITY TO OBTAIN THE PROPER INFORMATION FROM THE SUPPLIER REGARDING THE USE OF THIS PRODUCT. THE BUYER IS RESPONSIBLE FOR THE PROPER USE OF THIS PRODUCT. THE BUYER IS RESPONSIBLE FOR THE PROPER USE OF THIS PRODUCT. THE BUYER IS RESPONSIBLE FOR THE PROPER USE OF THIS PRODUCT.</p> <p>DIMENSIONS: DIMENSIONEN: mm</p> <p>TOLERANCES UNLESS OTHERWISE SPECIFIED: TOLERANZTOLERANZEN: mm</p> <p>APPLICATION SPEC: ANWENDUNGSSPEZ: HTS 16801 - 16.0</p> <p>WEIGHT: GEWICHT: -</p>	<p>Schneider 08.12.2004</p> <p>Schweiger 08.02.2004</p> <p>AMP</p> <p>PRODUCT SPEC: PRODUKTSPEZ:</p> <p>APPLICATION SPEC: ANWENDUNGSSPEZ:</p> <p>WEIGHT: GEWICHT: -</p>	<p>AMP HTS Elektrotechnik 53819 Neunkirchen, Germany</p> <p>Female insert HE 24 BUS/C</p> <p>SIZE: A2 CASE CODE: 00779 DRAWING NO: 1103641</p> <p>CUSTOMER DRAWING /KUNDENZEICHNUNG</p>	<p>RESTRICTED TO NUR FÜR:</p> <p>1 OF 1 REV E1</p>
--	---	--	--