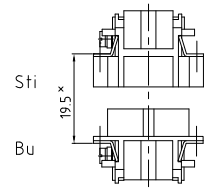
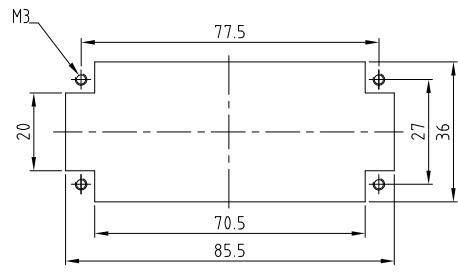
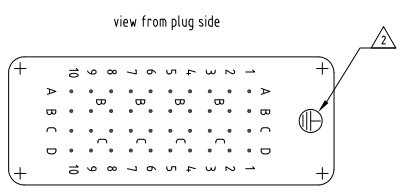


THIS DRAWING IS UNPUBLISHED.
 VERTRÄULICHE UNVERÖFFENTLICHTE ZEICHNUNG
 COPYRIGHT 1997
 RELEASED FOR PUBLICATION
 FREI FÜR VERÖFFENTLICHUNG
 BY AMP INCORPORATED. ALL RIGHTS RESERVED.
 BY AMP INCORPORATED. ALLE RECHTE VORBEHALTEN

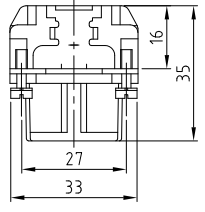
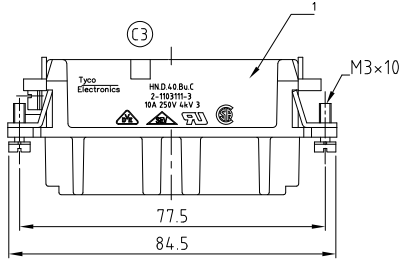
1997
 MATED WITH
 PASSEND ZU:
 HN.D.40

LOC	DIST	P	LTR	REVISIONS ÄNDERUNGEN	DATE	DWN	APVD
AI	-			DESCRIPTION BESCHREIBUNG	28.04.2010	SR	AR
PROJEKT NR.:	ECR-10-008965						

Panel cut-out for contact insert when used without housing Montagehinweis

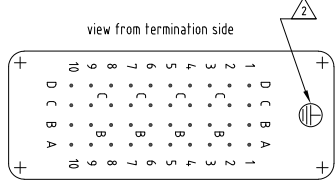


* Abstand für sichere Kontaktgabe max: 21 mm



NOTES

- 1 CONTACT: 1 - 40
- 2 OUTER DIMENSION OF INSULATION: MAX. Ø4,3 MM
- 3 SUITABLE HOOD SIZE 6: SERIES HB, HD, EMV, AND HIP
- 4 STANDARDS: DIN EN 61984; DIN EN 60664-1
- 5 PACKAGING: 5 PIECES IN A CARTON



1	Buchseinsatz HN.D.40 Crimp	dark grey	1	-	
2-3	DESCRIPTION / BENENNUNG	MATERIAL	COLOR / FARBE	ITEM NO. POS.	REMARKS / BEMERKUNGEN
5	THIS DRAWING IS A CONTROLLED DOCUMENT FOR AMP INCORPORATED. IT IS SUBJECT TO CHANGE AND THE CONTROLLING ENGINEERING ORGANIZATION SHOULD BE CONTACTED FOR THE LATEST REVISION. DIESE ZEICHNUNGSDOKUMENT WIRD DURCH AMP INCORPORATED KONTROLLIERT. ÄNDERUNGEN, DIE DEN TECHNISCHEN FORTSCHRITT GEDEN, SIND VORBEHALTEN. DEN FÜR JEDE LIEFERUNG ANZUGEBENDESTAND DRUCKER BEI AMP ANFANG.				
	DIMENSIONS: DIMENSIONEN: mm		TOLERANCES UNLESS OTHERWISE SPECIFIED: ALLGEMEINTOLERANZEN A. ISO 8015 B. ISO 7768 - MH - E C. DIN 16901 - TL0 0 PLC = 1 PLC = 2 PLC = 3 PLC =		
	MATERIAL		ANGLES / WINKEL = FINISH / OBERFLÄCHE / FARBE		
	ORDERING TEXT / BESTELLTTEXT HN.D.40 Bu.C		DOWN 12.08.1998 Schneider CRK 12.08.1998 Schweißer NAME Tyco Electronics HTS Elektrotechnik 53819 Neunkirchen, Germany		
	PRODUCT SPEC PRODUKTSPEZ. 108-74.002 APPLICATION SPEC VERARBEITUNGSSPEZ. 114-74.000		FEMALE INSERT BUCHSENEINSATZ HN.D.40 SIZE A3 CAGE CODE 00779 DRAWING NO. ZEICHNUNGS-NR. C-1103111 RESTRICTED TO NUR FÜR - CUSTOMER DRAWING / KUNDENZEICHNUNG		
WEIGHT GEWICHT 69 g		MASSSTAB 1:1 BLATT 1 OF VON 1 REV C3			