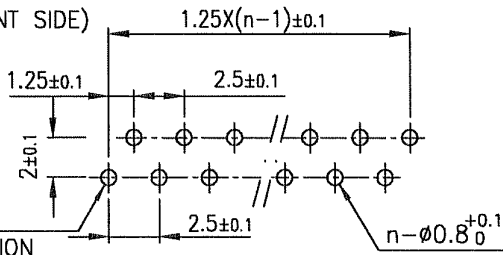


PT. NO.	PARTS NAME	MATERIAL	Q'TY	NOTE
1	HOUSING	PET RESIN GLASS REINFORCED (UL94V-0)	1	COLOR : BLACK
2	SLIDER		1	COLOR : GRAY
3	CONTACT	PHOSPHOR BRONZE	n	PLATING : TIN Ni UNDER PLATED

**RECOMMENDED PC BOARD**

THICKNESS : 0.8~1.6

HOLE PATTERN (COMPONENT SIDE)



BASIC HOLE

NO.1 CONTACT POSITION

n : NO. OF CONTACTS

THIS PRODUCT MEETS EUROPEAN UNION DIRECTIVES AND OTHER COUNTRY REGULATIONS AS DESCRIBED IN GS-22-008.

THE HOUSING WILL WITHSTAND EXPOSURE TO 260°C PEAK TEMPERATURE FOR 10 SECONDS IN A WAVE SOLDER APPLICATION WITH A 1.6mm THICK CIRCUIT BOARD.

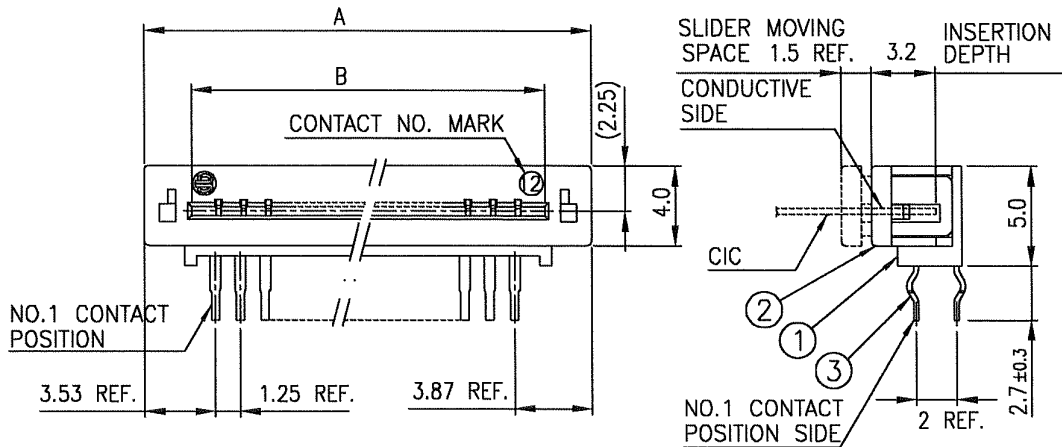
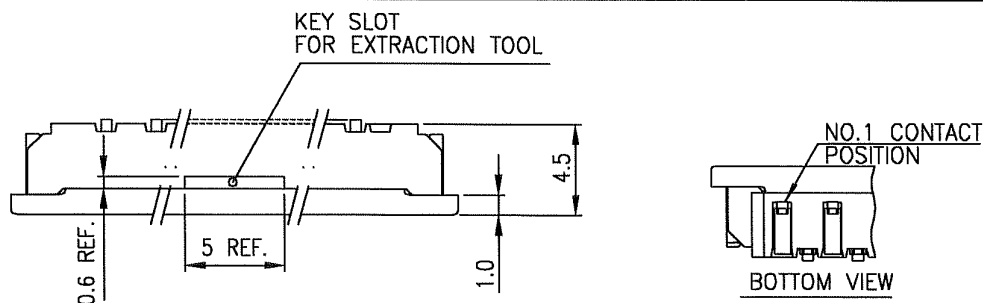
mat'l. code		surface 58 / tolerance ISO 1302 / ISO 406 / ISO 1101		projection		product family 58KF		CODE JP		
ltr	ecn no	dr	date	tolerances unless otherwise specified		title		1.25mm SPACING CONNECTOR FOR CIC (Cat. No. SLP__S-5LF)		
A	J05-0713	H.T	10/21/05	angles	±0.2	mm		dwg no sheet 1 of 1 size		
B	J06-0504	H.T	11/29/06	linear		scale X		JSA 96778 A4		
		dr	11/29/06			FCI		type Product Customer Drawing		
		engr	11/29/06							
		chr	11/29/06							
		appd	12/1/06							
sheet index	revision sheet	B	1							Rev. B

SC-SLP06 form: A4 JSA96777



FCIconnect.com

Copyright FCI.



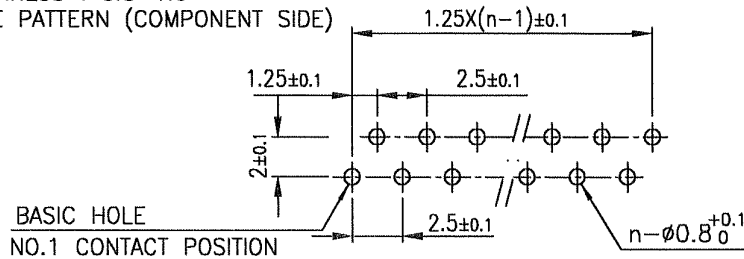
PT. NO.	PARTS NAME	MATERIAL	Q'TY	NOTE
1	HOUSING	PET RESIN GLASS REINFORCED (UL94V-0)	1	COLOR : BLACK
2	SLIDER		1	COLOR : GRAY
3	CONTACT	PHOSPHOR BRONZE	n	PLATING : TIN Ni UNDER PLATED

n : NO. OF CONTACTS

RECOMMENDED PC BOARD

THICKNESS : 0.8~1.6

HOLE PATTERN (COMPONENT SIDE)



THIS PRODUCT MEETS EUROPEAN UNION DIRECTIVES AND OTHER COUNTRY REGULATIONS AS DESCRIBED IN GS-22-008.  
THE HOUSING WILL WITHSTAND EXPOSURE TO 260°C PEAK TEMPERATURE FOR 10 SECONDS IN A WAVE SOLDER APPLICATION WITH A 1.6mm THICK CIRCUIT BOARD.

mat'l. code		surface ISO 1302 ✓		tolerance ISO 406 ISO 1101		projection		product family 58KF		CODE JP		
ltr	ecn no	dr	date	tolerances unless otherwise specified		mm		title				
A	J05-0713	H.T	10/21/05	angles	±0.2	mm		1.25mm SPACING CONNECTOR FOR CIC (Cat. No. SLP__R-5LF)				
B	J06-0504	H.T	11/29/06	linear		scale X		dwg no sheet 1 of 1 size				
				dr		FCJ		JSA 96779 A4				
				enr				type Product Customer Drawing				
				chr								
				appd								
sheet index	revision sheet	B	1									Rev B

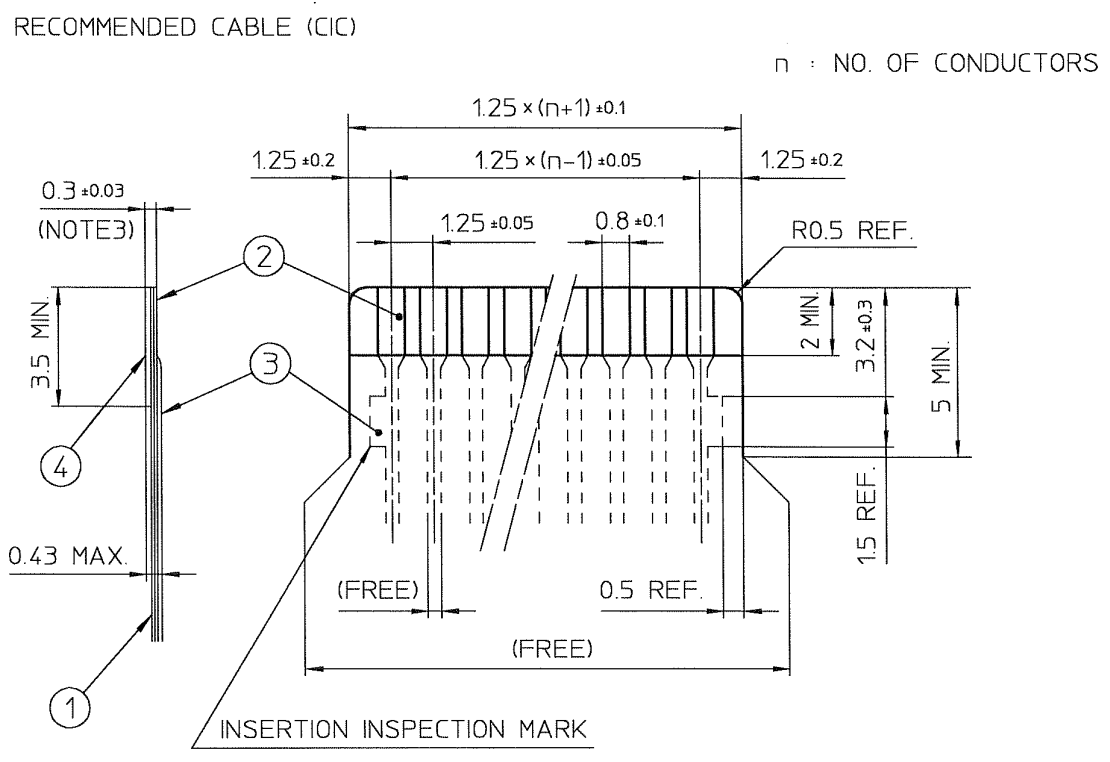
SC-SLP06 JSA96777 form: A4



FCIconnect.com

Copyright FCI.





BILL OF MATERIAL

PT. NO.	PARTS NAME	MATERIAL	THICKNESS (μm)
1	BASE FILM	POLYESTER OR EQUAL	75
2	CONDUCTOR	CARBON PASTE OVER SILVER PASTE	10 MIN.
3	OVERLAY	POLYESTER OR EQUAL	—
4	SUPPORTING TAPE	POLYESTER OR EQUAL	188

NOTES

1. NO BURR AT EACH PORTION.
2. NO PEELING IN COMMON USE.
3. THIS DIMENSION PRESCRIBES TOTAL THICKNESS OF PT. NO. 1, 2 & 4 INCLUDING ADHESIVES.

mat'l. code				surface ISO 1302 ✓		tolerance ISO 406 ISO 1101		projection		product family 58KF		
ltr	ecn no	dr	date	tolerances unless otherwise specified				title				
1		H.T	6/2/98					RECOMMENDED CABLE (CIC)				
A	J06-0504	H.T	11/29/06	angles	linear			(Cat. No. SLP__R/S-5__)				
				dr	<i>H. S. S. S. S.</i>		<i>11/29/06</i>		dwg no		sheet 1 of 1	size
				enr	<i>H. S. S. S. S.</i>		<i>11/29/06</i>		JSA 28896		A4	
				chr	<i>K. S. S. S. S.</i>		<i>11/29/06</i>		type		Product Customer Drawing	
				appd	<i>S. S. S. S. S.</i>		<i>12/1/06</i>					
sheet index	revision sheet	A	1									Rev
												A



FCIconnect.com

Copyright FCI