

1. THIS PRODUCT MEETS EUROPEAN UNION DIRECTIVES AND OTHER COUNTRY REGULATIONS AS DESCRIBED IN GS-22-008
2. THE HOUSING WILL WITHSTAND EXPOSURE TO 260°C PEAK TEMPERATURE FOR 10 SECONDS IN A WAVE SOLDER APPLICATION WITH A 1.6mm THICK CIRCUIT BOARD.

PT. NO.	PARTS NAME	MATERIAL	Q'TY	NOTE
1	HOUSING	PBT RESIN GLASS REINFORCED (UL94V-0)	1	COLOR : BLACK
2	SLIDER		1	
3	CONTACT	PHOSPHOR BRONZE	n	PLATING : Sn Ni UNDER PLATED (LEAD FREE)

n : NO. OF CONTACTS

mat'l. code		surface ISO 1302 ✓		tolerance ISO 406 ISO 1101		projection		product family 58KF		CODE JP	
ltr	ecn no	dr	date	tolerances unless otherwise specified		mm		title			
A	J05-0435	H.T	7/8/'05	angles	linear	±0.3		1.25mm SPACING FPC/FFC CONNECTOR			
B	J05-0733	H.T	10/28/'05					(Cat. No. SLD__R-1LF)			
C	J06-0503	H.T	11/28/'06			scale X		dwg no sheet 1 of 1 size			
				dr		11/28/06		JSA 96549 A4			
				enr		11/28/06		type Product Customer Drawing			
				chr		11/28/06		Rev			
				appd		11/28/06		C			
sheet index	revision	C	sheet	1							

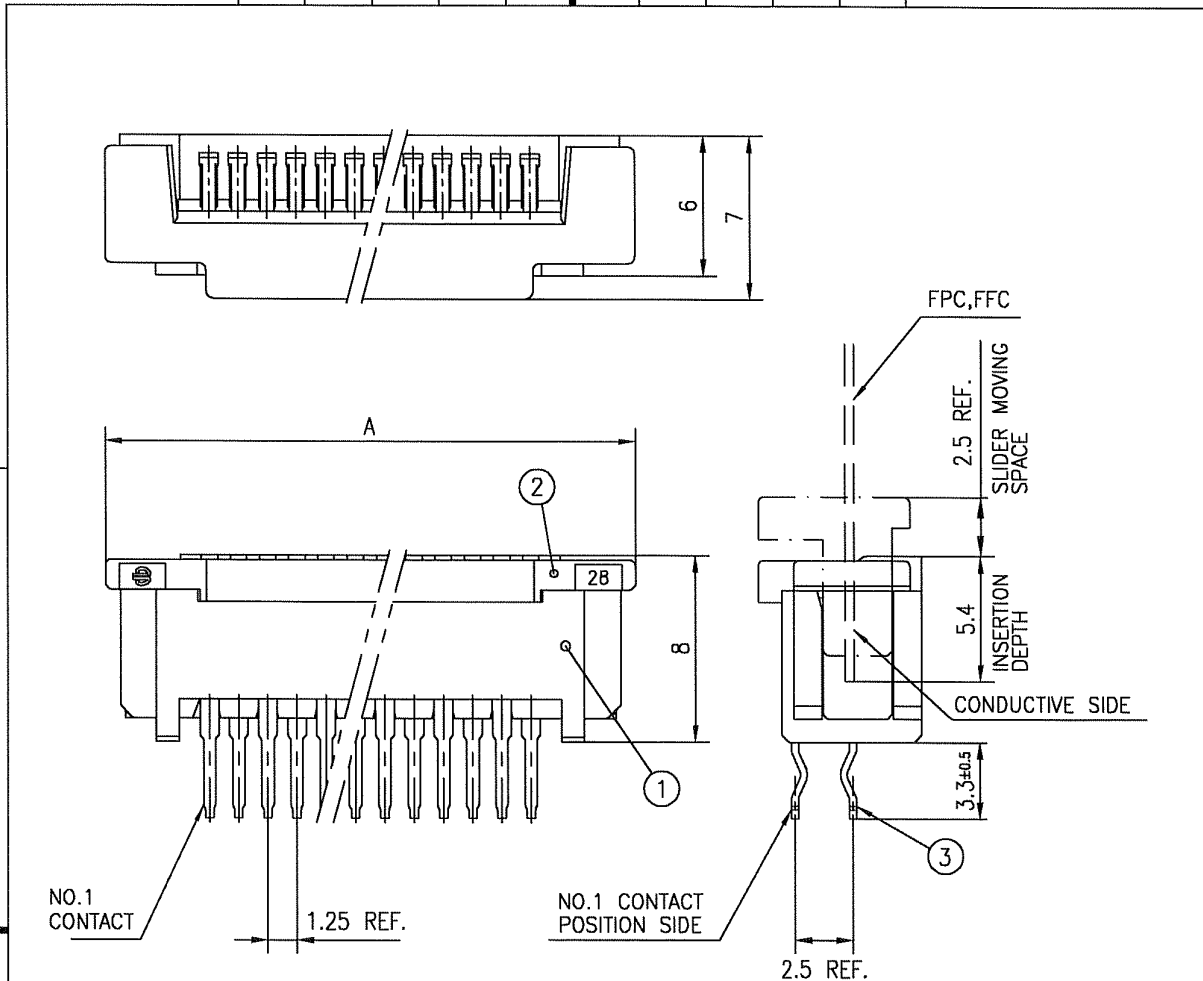
SC-SLD02 form: A4 JSA96548 96550 91823



FCIconnect.com

Copyright FCI.





1. THIS PRODUCT MEETS EUROPEAN UNION DIRECTIVES AND OTHER COUNTRY REGULATIONS AS DESCRIBED IN GS-22-008
2. THE HOUSING WILL WITHSTAND EXPOSURE TO 260°C PEAK TEMPERATURE FOR 10 SECONDS IN A WAVE SOLDER APPLICATION WITH A 1.6mm THICK CIRCUIT BOARD.

PT. NO.	PARTS NAME	MATERIAL	Q'TY	NOTE
1	HOUSING	PBT RESIN GLASS REINFORCED (UL94V-0)	1	COLOR : BLACK
2	SLIDER		1	
3	CONTACT	PHOSPHOR BRONZE	n	PLATING : Sn Ni UNDER PLATED (LEAD FREE)

n : NO. OF CONTACTS

mat'l. code		surface 58 ISO 1302 ✓		tolerance ISO 406 ISO 1101		projection mm		product family 58KF		CODE JP	
ltr	ecn no	dr	date	tolerances unless otherwise specified		mm		title 1.25mm SPACING FPC/FFC CONNECTOR (Cat. No. SLD__S-1LF)			
A	J05-0435	H.T	7/8/05	angles	linear	±0.3					
B	J05-0733	H.T	10/28/05								
C	J06-0503	H.T	11/28/06								
				dr		11/28/06					
				enr		11/28/06		dwg no		sheet 1 of 1 size	
				chr		11/23/06		JSA 96550		A4	
				app		11/28/06		type		Product Customer Drawing	
sheet index	revision	C									Rev
	sheet	1									C

SC-SLDD2 form: A4 JSA96548 96549 91823

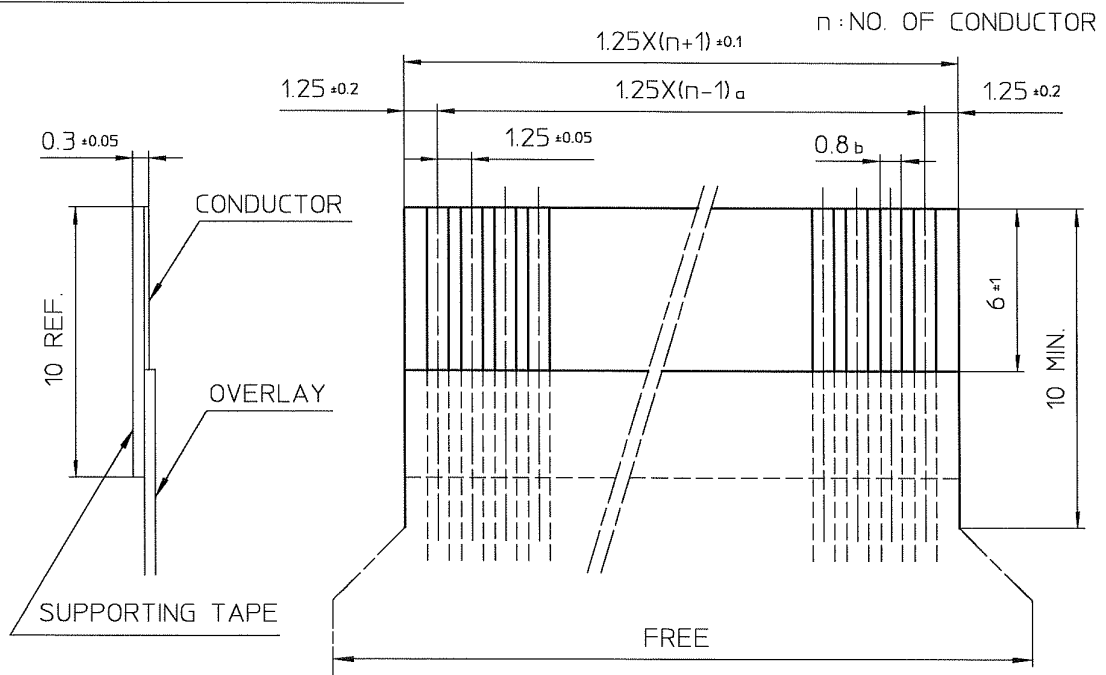


FCIconnect.com

Copyright FCI.



RECOMMENDED CABLE (FPC,FFC)



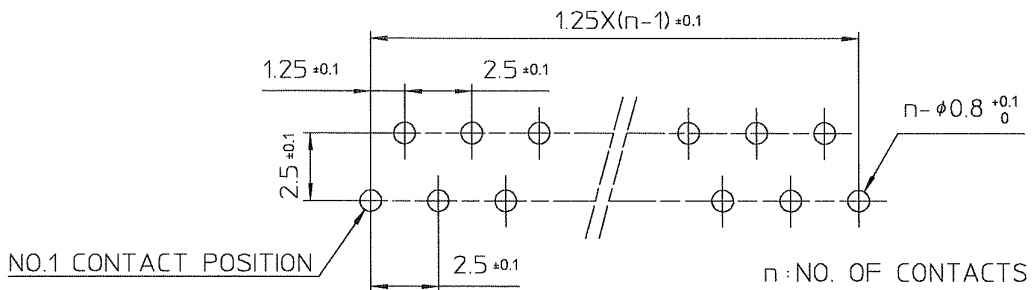
NOTES

1. SURFACE TREATMENT OF CONDUCTOR PORTIONS MUST BE TIN PLATED OR SOLDER PLATED WITH MORE THAN 1µm THICKNESS.
2. NO BURR AT EACH PORTION.
3. NO PEELING IN COMMON USE.

TYPE	DIMENSIONAL TOLERANCE	
	a	b
FPC	±0.05	±0.1
FFC	±0.1	±0.03

RECOMMENDED PC BOARD

THICKNESS : 0.9-2.0  
HOLE PATTERN (COMPONENT SIDE)



mat'l. code			surface ISO 1302 ✓		tolerance ISO 406 ISO 1101		projection		product family 58KF	
ltr	ecn no	dr	date		tolerances unless otherwise specified		title		RECOMMENDED PC BOARD AND CABLE	
1		H.T	9/9/98				scale X		(Cat. No. SLD__R/S-1/2_)	
A	J06-0503	H.T	11/28/06		angles	linear	FCJ		sheet 1 of 1	
			dr	11/28/06				JSA 91823		size A4
			enr	11/28/06				type Product Customer Drawing		
			chr	11/28/06						
			appd	11/28/06						
sheet index	revision sheet	A	1						Rev A	



FCJconnect.com

Copyright FCJ

