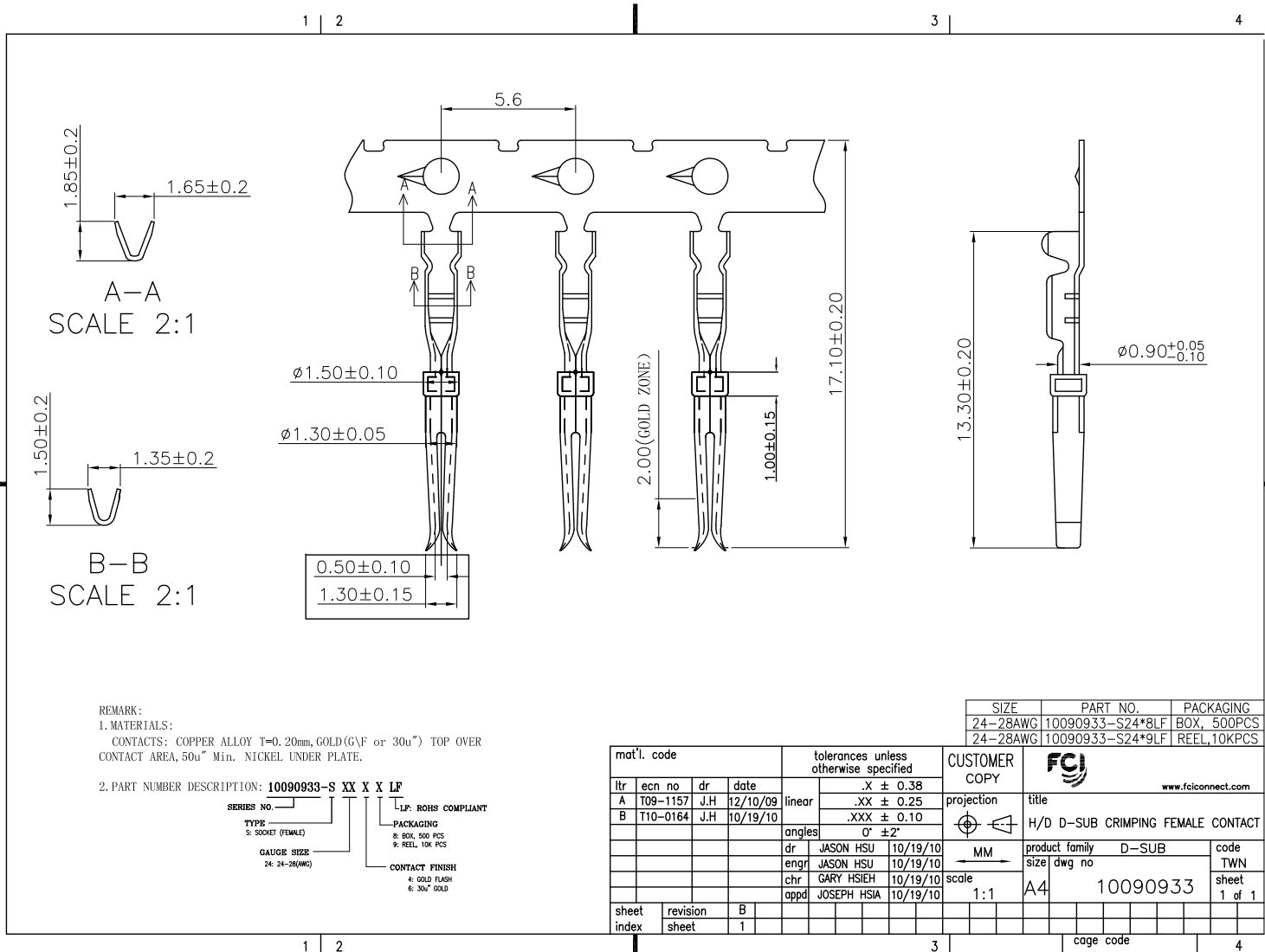


All rights strictly reserved. Reproduction or issue to third parties in any form whatever is not permitted without written authority from the proprietor. Property of FCI. Copyright FCI.



REMARK:  
 1. MATERIALS:  
 CONTACTS: COPPER ALLOY T=0.20mm, GOLD(GVF or 30u") TOP OVER CONTACT AREA, 50u" Min. NICKEL UNDER PLATE.

2. PART NUMBER DESCRIPTION: **10090933-S XX X X LF**  
 SERIES NO. \_\_\_\_\_  
 TYPE: \_\_\_\_\_  
 S: SOCKET (FEMALE)  
 GAUGE SIZE: 24-28(AWG)  
 LF: ROHS COMPLIANT  
 PACKAGING:  
 8: BOX, 500 PCS  
 9: REEL, 10K PCS  
 CONTACT FINISH:  
 4: GOLD FLASH  
 6: 30u" GOLD

SIZE	PART NO.	PACKAGING
24-28AWG	10090933-S24*8LF	BOX, 500PCS
24-28AWG	10090933-S24*9LF	REEL, 10KPCS

mat'l. code				tolerances unless otherwise specified		CUSTOMER COPY	
ltr	ecn no	dr	date	linear	.X ± 0.38	projection	title
A	T09-1157	J.H	12/10/09		.XX ± 0.25		
B	T10-0164	J.H	10/19/10	angles	.XXX ± 0.10	H/D D-SUB CRIMPING FEMALE CONTACT	product family D-SUB
					0° ±2°		
				dr	JASON HSU 10/19/10	MM	code TWN
				engr	JASON HSU 10/19/10		
				chr	GARY HSIEH 10/19/10	scale 1:1	size A4
				appd	JOSEPH HSIA 10/19/10		
sheet index	revision sheet	B	1				10090933
							1 of 1