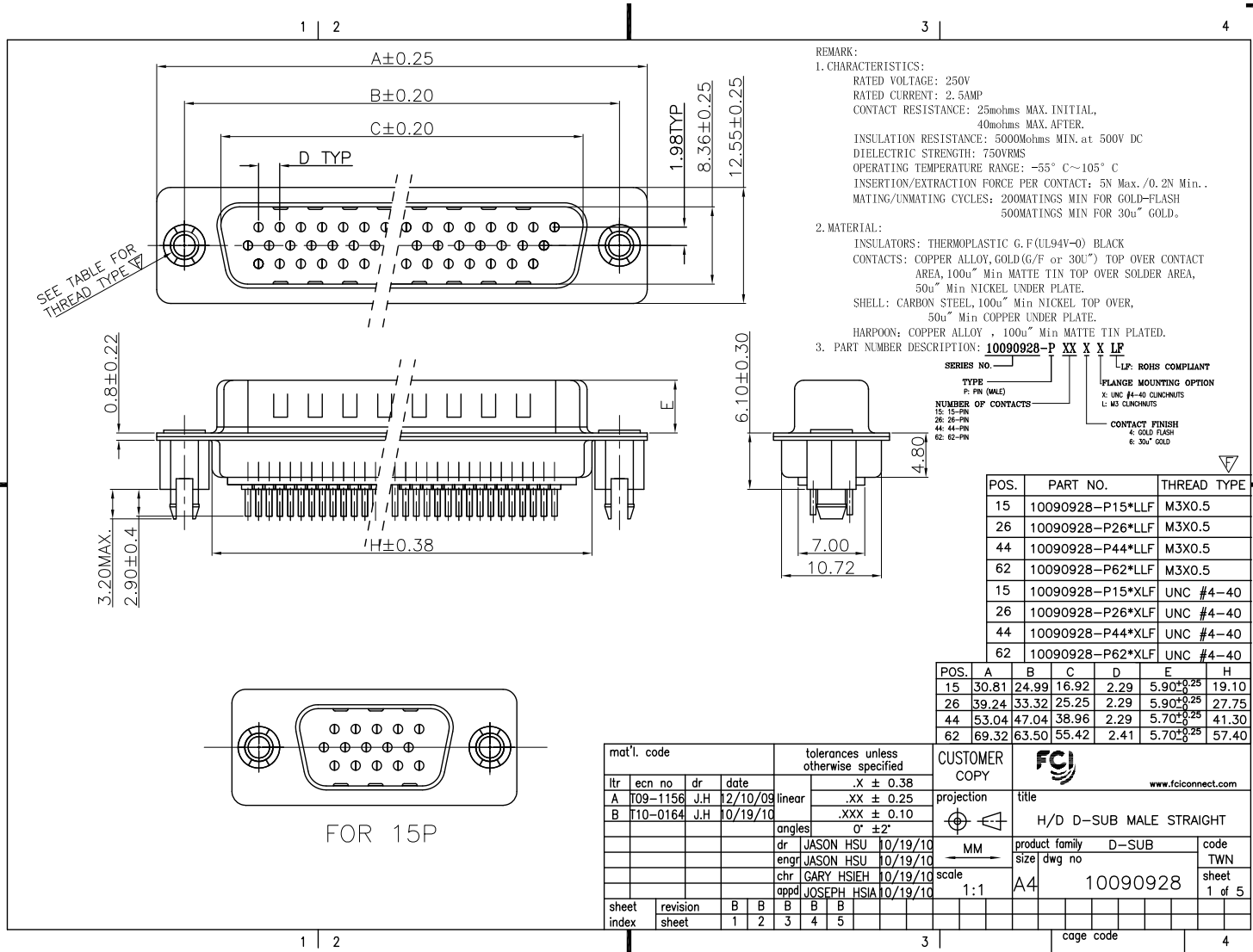


Tous droits strictement réservés. Reproduction ou communication à des tiers interdite sous quelque forme que ce soit sans autorisation écrite du propriétaire. Property of FCJ. Droits de reproduction FCJ.



All rights strictly reserved. Reproduction or issue to third parties in any form whatever is not permitted without written authority from the proprietor. Property of FCJ. Copyright FCJ.



REMARK:
 1. CHARACTERISTICS:
 RATED VOLTAGE: 250V
 RATED CURRENT: 2.5AMP
 CONTACT RESISTANCE: 25mohms MAX. INITIAL, 40mohms MAX. AFTER.
 INSULATION RESISTANCE: 5000Mohms MIN. at 500V DC
 DIELECTRIC STRENGTH: 750VRMS
 OPERATING TEMPERATURE RANGE: -55° C~105° C
 INSERTION/EXTRACTION FORCE PER CONTACT: 5N Max./0.2N Min.
 MATING/UNMATING CYCLES: 200MATINGS MIN FOR GOLD-FLASH 500MATINGS MIN FOR 30u" GOLD.
 2. MATERIAL:
 INSULATORS: THERMOPLASTIC G.F(UL94V-0) BLACK
 CONTACTS: COPPER ALLOY, GOLD(G/F or 30u") TOP OVER CONTACT AREA, 100u" Min MATTE TIN TOP OVER SOLDER AREA, 50u" Min NICKEL UNDER PLATE.
 SHELL: CARBON STEEL, 100u" Min NICKEL TOP OVER, 50u" Min COPPER UNDER PLATE.
 HARPOON: COPPER ALLOY, 100u" Min MATTE TIN PLATED.
 3. PART NUMBER DESCRIPTION: **10090928-P XX X X LF**

SERIES NO. LP: ROHS COMPLIANT
 TYPE P: FN (MALE)
 NUMBER OF CONTACTS X: UNC #4-40 CLINCHMUT L: M3 CLINCHMUT
 CONTACT FINISH 4: GOLD FLASH 5: 30u" GOLD

POS.	PART NO.	THREAD TYPE
15	10090928-P15*LLF	M3X0.5
26	10090928-P26*LLF	M3X0.5
44	10090928-P44*LLF	M3X0.5
62	10090928-P62*LLF	M3X0.5
15	10090928-P15*XLF	UNC #4-40
26	10090928-P26*XLF	UNC #4-40
44	10090928-P44*XLF	UNC #4-40
62	10090928-P62*XLF	UNC #4-40

POS.	A	B	C	D	E	H
15	30.81	24.99	16.92	2.29	5.90 ^{+0.25}	19.10
26	39.24	33.32	25.25	2.29	5.90 ^{+0.25}	27.75
44	53.04	47.04	38.96	2.29	5.70 ^{+0.25}	41.30
62	69.32	63.50	55.42	2.41	5.70 ^{+0.25}	57.40

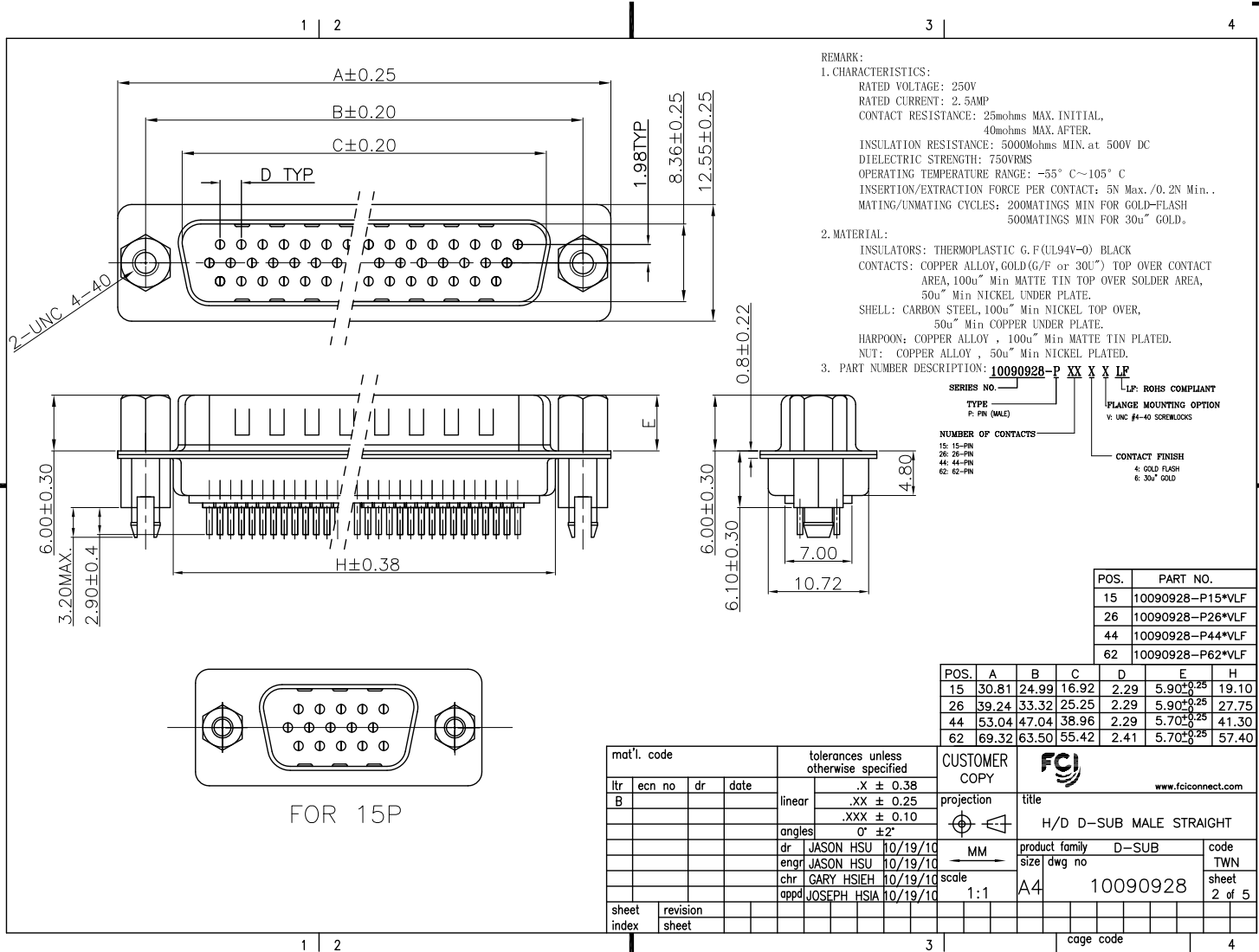
mat'l. code				tolerances unless otherwise specified			
lfr	ecn no	dr	date	linear	.X ± 0.38	projection	
A	T09-1156	J.H	12/10/09		.XX ± 0.25		
B	T10-0164	J.H	10/19/10	angles	.XXX ± 0.10		
				dr	0° ±2°		
				enrg	JASON HSU 10/19/10	MM	
				chr	JASON HSU 10/19/10	scale	
				appd	GARY HSIEH 10/19/10	1:1	
					JOSEPH HSIA 10/19/10		
sheet index	revision sheet	B	B	B	B	B	B
		1	2	3	4	5	

CUSTOMER COPY		FCJ	
title	H/D D-SUB MALE STRAIGHT	product family	D-SUB
size	A4	dwg no	10090928
code		code	TWN
		sheet	1 of 5

Tous droits strictement réservés. Reproduction ou communication a des tiers interdite sous quelque forme que ce soit sans autorisation écrite du propriétaire. Propriété de c. FCI. Droits de reproduction FCI.



All rights strictly reserved. Reproduction or issue to third parties in any form whatever is not permitted without written authority from the proprietor. Property of FCI. Copyright FCI.



REMARK:
 1. CHARACTERISTICS:
 RATED VOLTAGE: 250V
 RATED CURRENT: 2.5AMP
 CONTACT RESISTANCE: 25mohms MAX. INITIAL, 40mohms MAX. AFTER.
 INSULATION RESISTANCE: 5000mohms MIN. at 500V DC
 DIELECTRIC STRENGTH: 750VRMS
 OPERATING TEMPERATURE RANGE: -55° C~105° C
 INSERTION/EXTRACTION FORCE PER CONTACT: 5N Max./0.2N Min.
 MATING/UNMATING CYCLES: 200MATINGS MIN FOR GOLD-FLASH 500MATINGS MIN FOR 30u" GOLD.
 2. MATERIAL:
 INSULATORS: THERMOPLASTIC G.F.(UL94V-0) BLACK
 CONTACTS: COPPER ALLOY, GOLD(G/F or 30u") TOP OVER CONTACT AREA, 100u" Min MATTE TIN TOP OVER SOLDER AREA, 50u" Min NICKEL UNDER PLATE.
 SHELL: CARBON STEEL, 100u" Min NICKEL TOP OVER, 50u" Min COPPER UNDER PLATE.
 HARPOON: COPPER ALLOY, 100u" Min MATTE TIN PLATED.
 NUT: COPPER ALLOY, 50u" Min NICKEL PLATED.
 3. PART NUMBER DESCRIPTION: 10090928-P XX X X LF

SERIES NO. _____
 TYPE _____
 P: FN (MALE)
 NUMBER OF CONTACTS _____
 15-26-PN
 26-44-PN
 44-62-PN
 62-62-PN
 L.P. ROHS COMPLIANT
 FLANGE MOUNTING OPTION
 V: UNC #1-40 SOLDERLOCKS
 CONTACT FINISH
 4: GOLD FLASH
 8: 30u" GOLD

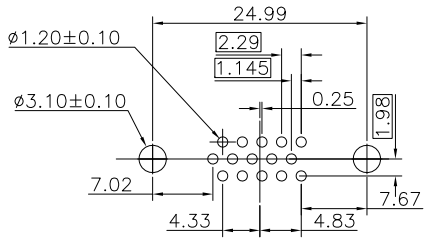
POS.	A	B	C	D	E	H
15	30.81	24.99	16.92	2.29	5.90 ^{+0.25}	19.10
26	39.24	33.32	25.25	2.29	5.90 ^{+0.25}	27.75
44	53.04	47.04	38.96	2.29	5.70 ^{+0.25}	41.30
62	69.32	63.50	55.42	2.41	5.70 ^{+0.25}	57.40

mat'l. code				tolerances unless otherwise specified		CUSTOMER COPY		FCI	
ltr	ecn no	dr	date	linear	.X ± 0.38	projection	title		
B					.XX ± 0.25		H/D D-SUB MALE STRAIGHT		
				angles	.XXX ± 0.10		product family	D-SUB	code
				dr	0° ±2'	MM	size	TWN	
				engr	JASON HSU 10/19/10	scale	dwg no	sheet	
				chr	JASON HSU 10/19/10	1:1	10090928	2 of 5	
				appd	JOSEPH HSIA 10/19/10				
sheet index	revision	sheet							

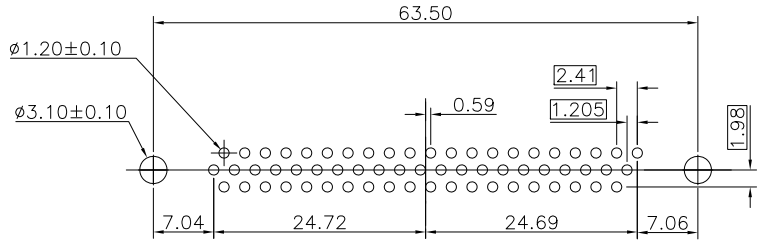
Tous droits strictement réservés. Reproduction ou communication à des tiers interdite sous quelque forme que ce soit sans autorisation écrite du propriétaire. Propriété de c. FCJ. Droits de reproduction FCJ.



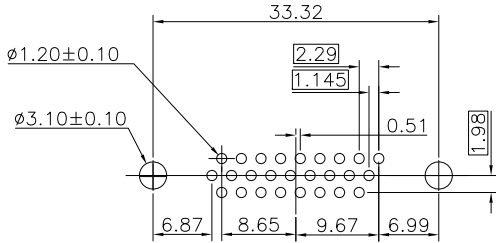
All rights strictly reserved. Reproduction or issue to third parties in any form whatever is not permitted without written authority from the proprietor. Property of FCJ. Copyright FCJ.



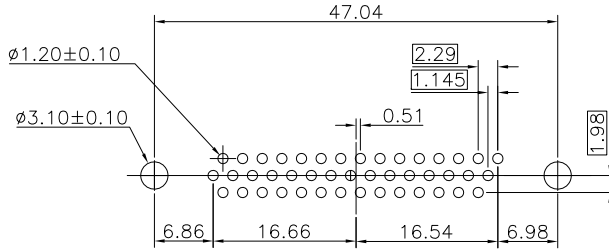
P.C.B LAYOUT(FOR 15P)



P.C.B LAYOUT(FOR 62P)



P.C.B LAYOUT(FOR 26P)



P.C.B LAYOUT(FOR 44P)

mat'l. code				tolerances unless otherwise specified			CUSTOMER COPY		FCJ	
ltr	ecn no	dr	date	linear	.X ± 0.38		projection	www.fcjconnect.com		
B					.XX ± 0.25			H/D D-SUB MALE STRAIGHT PCB	title	
					.XXX ± 0.10				D-SUB	
				angles	0° ±2°		MM		TWN	
				dr	JASON HSU	10/19/10	scale		sheet	
				enrg	JASON HSU	10/19/10	1:1		3 of 5	
				chr	GARY HSIEH	10/19/10	A4			
				appd	JOSEPH HSIA	10/19/10	10090928			
sheet index	revision sheet						cage code			

ACAD

PDM: Rev:B

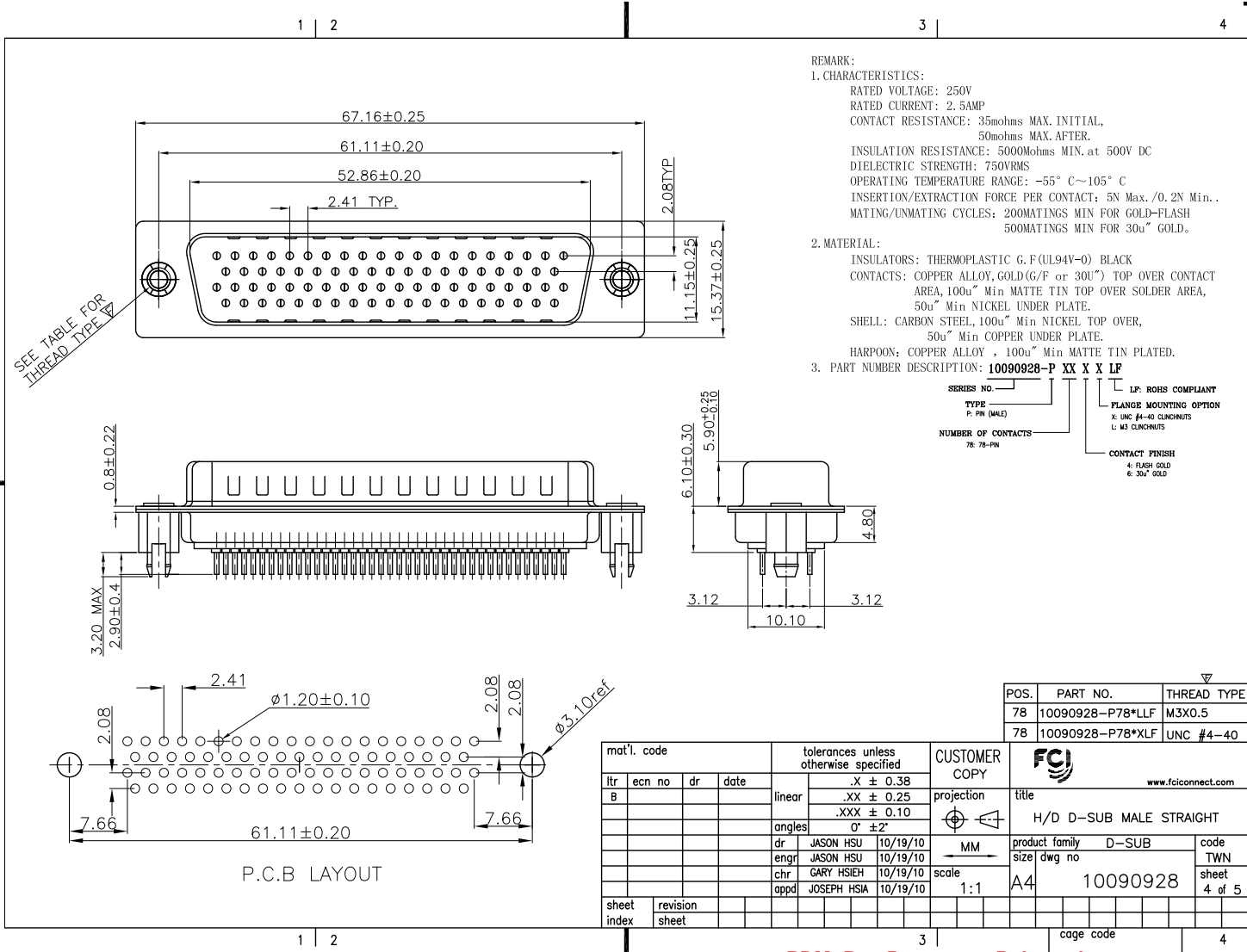
STATUS:Released

Printed: Nov 02, 2010

Tous droits strictement réservés. Reproduction ou communication a des tiers interdite sous quelque forme que ce soit sans autorisation écrite du propriétaire. Property of FCJ. Copyright FCJ. Droits de reproduction FCJ.



All rights strictly reserved. Reproduction or issue to third parties in any form whatever is not permitted without written authority from the proprietor. Property of FCJ. Copyright FCJ.



REMARK:

1. CHARACTERISTICS:

RATED VOLTAGE: 250V
 RATED CURRENT: 2.5AMP
 CONTACT RESISTANCE: 35mohms MAX. INITIAL,
 50mohms MAX. AFTER.
 INSULATION RESISTANCE: 5000Mohms MIN. at 500V DC
 DIELECTRIC STRENGTH: 750V/MS
 OPERATING TEMPERATURE RANGE: -55° C~105° C
 INSERTION/EXTRACTION FORCE PER CONTACT: 5N Max. /0.2N Min. .
 MATING/UNMATING CYCLES: 200MATINGS MIN FOR GOLD-FLASH
 500MATINGS MIN FOR 30u" GOLD.

2. MATERIAL:

INSULATORS: THERMOPLASTIC G.F(UL94V-0) BLACK
 CONTACTS: COPPER ALLOY, GOLD(G/F or 30u") TOP OVER CONTACT
 AREA, 100u" Min MATTE TIN TOP OVER SOLDER AREA,
 50u" Min NICKEL UNDER PLATE.
 SHELL: CARBON STEEL, 100u" Min NICKEL TOP OVER,
 50u" Min COPPER UNDER PLATE.
 HARPOON: COPPER ALLOY , 100u" Min MATTE TIN PLATED.

3. PART NUMBER DESCRIPTION: **10090928-P XX X X LF**

SERIES NO. _____

TYPE _____

P: PIN (MALE)

NUMBER OF CONTACTS _____

78: 78-PIN

LF: ROHS COMPLIANT

PLANGE MOUNTING OPTION

X: UNC #4-40 CLINCHNUTS

L: M3 CLINCHNUTS

CONTACT FINISH

4: FLASH GOLD

6: 30u" GOLD

POS.	PART NO.	THREAD TYPE
78	10090928-P78*LLF	M3X0.5
78	10090928-P78*XLF	UNC #4-40

mat'l. code				tolerances unless otherwise specified		CUSTOMER COPY	
ltr	ecn no	dr	date	linear	.X ± 0.38	projection	title
B					.XX ± 0.25		H/D D-SUB MALE STRAIGHT
				angles	.XXX ± 0.10		
				dr	0° ±2'	MM	product family
				engr		scale	D-SUB
				chr	JASON HSU 10/19/10	1:1	size
				enr	JASON HSU 10/19/10		dwg no
				chr	GARY HSIEH 10/19/10		10090928
				appd	JOSEPH HSIA 10/19/10		code
sheet index	revision						TWN
	sheet						4 of 5

Tous droits strictement réservés. Reproduction ou communication à des tiers interdite sous quelque forme que ce soit sans autorisation écrite du propriétaire. Property of FCJ. Droits de reproduction FCJ.

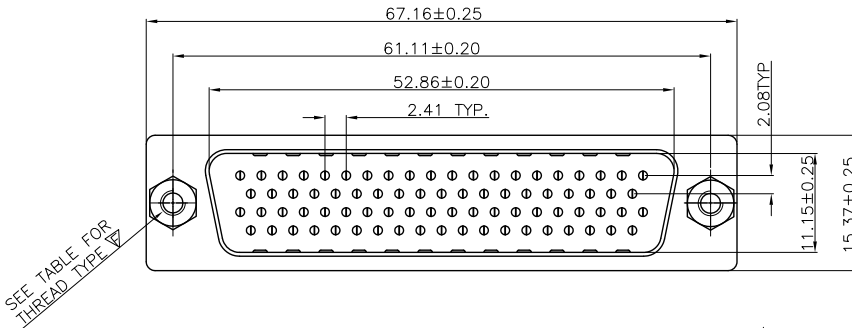


All rights strictly reserved. Reproduction or issue to third parties in any form whatever is not permitted without written authority from the proprietor. Property of FCJ. Copyright FCJ.

1 | 2

3

4



REMARK:

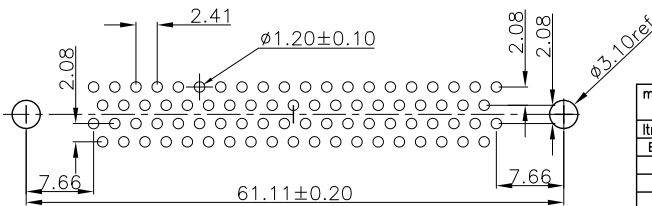
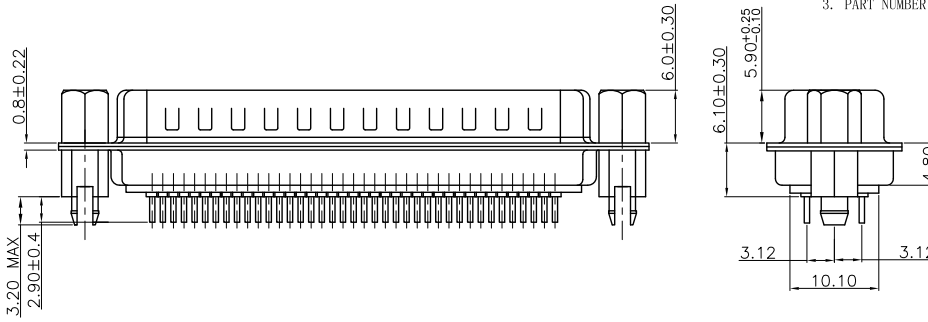
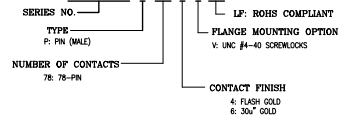
1. CHARACTERISTICS:

- RATED VOLTAGE: 250V
- RATED CURRENT: 2.5AMP
- CONTACT RESISTANCE: 35Mohms MAX. INITIAL, 50Mohms MAX. AFTER.
- INSULATION RESISTANCE: 500Mohms MIN. at 500V DC
- DIELECTRIC STRENGTH: 750VRMS
- OPERATING TEMPERATURE RANGE: -55° C~105° C
- INSERTION/EXTRACTION FORCE PER CONTACT: 5N Max./0.2N Min.
- MATING/UNMATING CYCLES: 200MATINGS MIN FOR GOLD-FLASH 500MATINGS MIN FOR 30u" GOLD.

2. MATERIAL:

- INSULATORS: THERMOPLASTIC G.F (UL94V-0) BLACK
- CONTACTS: COPPER ALLOY, GOLD(G/F or 30u") TOP OVER CONTACT AREA, 100u" Min MATTE TIN TOP OVER SOLDER AREA, 50u" Min NICKEL UNDER PLATE.
- SHELL: CARBON STEEL, 100u" Min NICKEL TOP OVER, 50u" Min COPPER UNDER PLATE.
- HARPOON: COPPER ALLOY, 100u" Min MATTE TIN PLATED.
- NUT: COPPER ALLOY, 50u" Min NICKEL PLATED.

3. PART NUMBER DESCRIPTION: 10090928-P XX X X LF



P.C.B LAYOUT

PART NO.: 10090928-P78*VLF

mat'l. code		tolerances unless otherwise specified		CUSTOMER COPY		FCJ www.fciconnect.com
ltr	ecn no	dr	date	linear	projection	
B				.X ± 0.38	⊕	H/D D-SUB MALE STRAIGHT
				.XX ± 0.25	⊕	product family D-SUB
				.XXX ± 0.10	MM	code TWN
				angles	0° ±2'	size dwg no
				dr	JASON HSU	10/19/10
				enrg	JASON HSU	10/19/10
				chr	GARY HSIEH	10/19/10
				appd	JOSEPH HSIA	10/19/10
sheet index	revision sheet			scale	1:1	A4
						10090928
						5 of 5
						cage code

1 | 2

3

4

ACAD

PDM: Rev:B

STATUS: Released

Printed: Nov 02, 2010