

4

3

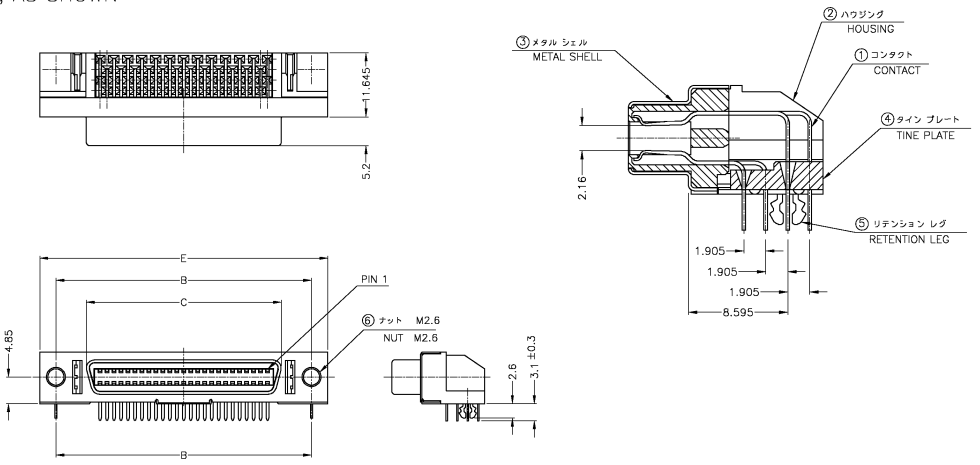
2

1

THIS DRAWING IS UNPUBLISHED. RELEASED FOR PUBLICATION 2004.
 © COPYRIGHT 2003 BY TYCO ELECTRONICS CORPORATION. ALL RIGHTS RESERVED.

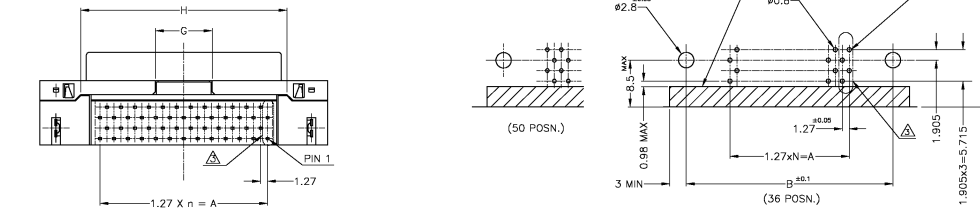
REV. NO.	DATE	BY	APP'D
B	20JUN04	T.K.	Y.Y.

-7 ; AS SHOWN



ITEM	材料 (MATERIAL)	仕上 (FINISH)
①	銅合金 COPPER ALLOY	全面ニッケル下地めっき 種別: 金めっき (0.1μm以上) タイン層: りめっき NICKEL UNDER PLATE ALL OVER CONTACT AREA: Au (0.1μm) SOLDER TINE AREA; TIN PLATE
②	PBT	色: 黒 COLOR: BLACK
③	鋼 t=0.25 STEEL t=0.25	鋼下地めっき上にニッケルめっき NICKEL PLATE OVER COPPER UNDERPLATE
⑤	銅合金 COPPER ALLOY	全面ニッケル下地上に全面りめっき NICKEL UNDER PLATE ALL OVER, TIN PLATING ALL OVER.
⑥	鋼 STEEL	全面鋼下地全面ニッケルめっき Cu UNDER PLATE ALL OVER, NICKEL PLATING ALL OVER.

注記
 1 適用ねじ: M2.6ねじ
 2 推奨基板厚: 1.6mm (参考)
 3 ポストは本配列より除きます。
 NOTE
 1 RECOMMENDED SCREW SIZE: M2.6 PANHEAD SCREW
 2 RECOMMENDED P.C BOARD THICKNESS: 1.6mm (REF)
 3 POST PATTERN AS SHOWN ON THIS END FOR ALL POSITION.



推奨基板穴の寸法
 RECOMMENDED P.C BOARD
 MOUNTING DIMMENSION
 コネクタ側付番
 COMPONENT SIDE

鉛フリー
 LEAD FREE

Weight(g)	H	G	F	E	C	B	A	N	POSITION	PART NO.
7.6	37.5	10.3	37.11	52.40	35.48	46.50	30.48	24	50	316998-7
6.8	28.61	8.3	28.21	43.51	26.59	37.61	21.59	17	36	316998-5

THIS DRAWING IS A CONTROLLED DOCUMENT. DIM: T.KAWAMAE 20JUN03, DDK 20JUN03, S.SHIRAI 20JUN03, APD: Y.YAMAMOTO 20JUN03, MFC: Y.YAMAMOTO 20JUN03. PRODUCT SPEC: 108-5288. APPLICATION SPEC: SEE TABLE. WEIGHT: SEE TABLE. MATERIAL: SEE TABLE. FINISH: SEE TABLE. CUSTOMER DRAWING. SEE: 00779. CASE CODE: C. DRAWING NO: 316998. RESTRICTED TO: B. SCALE: 2:1. SHEET: 1 OF 1. REV: B.