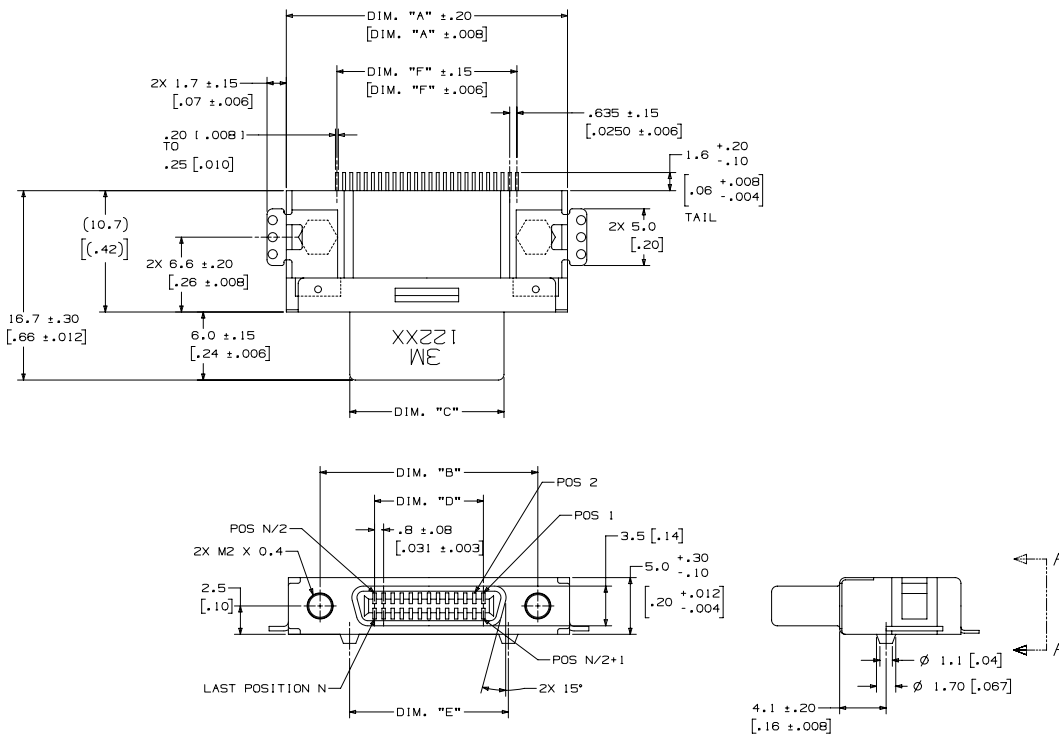


3M™ Shrunk Delta Ribbon (SDR) Connectors, 122 Series
 .80 mm Surface Mount, Right Angle Receptacle, Shielded



POSITION	DIM. "A"	DIM. "B"	DIM. "C"	DIM. "D"	DIM. "E"	DIM. "F"	DIM. "G"
14	20.0 [.79]	14.4 [.57]	8.8 [.35]	4.8 [.19]	9.2 [.36]	8.255 [.3250]	19.0 [.75]
26	24.8 [.98]	19.2 [.76]	13.6 [.54]	9.6 [.38]	14.0 [.55]	15.875 [.6250]	23.6 [.94]

CONNECTOR DIMENSION TABLE
 TABLE 1

- NOTES
- MATERIAL:
 INSULATION: 14 PIN: PPS, 26 PIN: LCP
 COLOR: BLACK, UL94V-0
 CONTACT: COPPER ALLOY
 PLATING:
 UNDERPLATE: 2.55µm (100µ") NICKEL
 WIPING AREA: .75µm (30µ") GOLD
 TERMINATION AREA: GOLD FLASH OVER NICKEL
 SHROUD & LATCH HOOK: STEEL
 PLATING: NICKEL
 GROUND LOCK: COPPER ALLOY
 PLATING: SEMI-BRIGHT TIN OVER NICKEL
 LOCK SCREW: STEEL
 PLATING: NICKEL
 ALIGNMENT PLATE: PPS
 COLOR: BLACK, UL94V-0
 EARTH PLATE: COPPER ALLOY
 PLATING: TIN
 HEX NUT: BRASS
 - MARKING: 3M LOGO AND PART NUMBER.
 - ELECTRICAL:
 CURRENT RATING: 0.5 A
 INSULATION RESISTANCE: 500 MΩ MIN AT 250 V_{ac}
 WITHSTANDING VOLTAGE: 350 V_{ac} FOR 1 MINUTE
 - ENVIRONMENTAL:
 TEMPERATURE RATING:
 -40° C TO +70° C
 PROCESS RATING:
 REFLOW: PREHEAT 150° TO 180° C,
 90 TO 120 SECONDS
 SOLDERING: OVER 220° C,
 30 TO 60 SECONDS, PEAK TEMPERATURE
 15 TO 250° C MAX.
 SOLDER IRON: 380° C MAX, 3 SECONDS MAX.
 - IN THE EVENT OF CONFLICT BETWEEN THIS DATA
 AND THAT CONTAINED IN THE PRODUCT
 SPECIFICATION, THE PRODUCT SPECIFICATION
 TAKES PRECEDENT.
 - FOR VARIOUS PANEL THICKNESS JACKSOCKETS
 REFER TO TS-0142.
 - SEE REGULATORY INFORMATION APPENDIX (RIA)
 IN THE "RoHS COMPLIANCE" SECTION OF
 WWW.3MCONNECTOR.COM FOR COMPLIANCE INFORMATION.

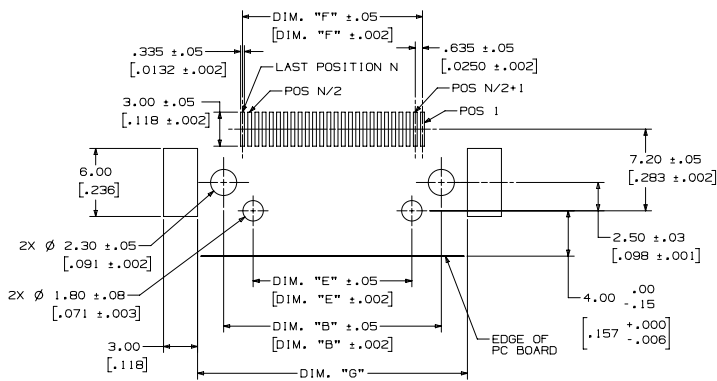
DIMENSIONS ARE IN MM.
 SECONDARY ARE IN (INCHES)
 AND ARE FOR REFERENCE ONLY

REV	30752	JAN 05, 2011	JNC	SC
REV	510	REVISED AND REDRAWN		
ISSUE DATE AND DESCRIPTION				
DESIGNER				
DATE				
DESIGN				
DATE				
REV				
ISSUE DATE AND DESCRIPTION				
DESIGNER				
DATE				
DESIGN				
DATE				

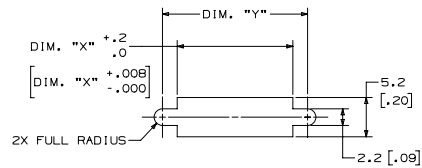
3M SHRUNK DELTA
 RIBBON (SDR) CONN.
 122XX-82X0-00FR

UL FILE NO: E68080

3M™ Shrunk Delta Ribbon (SDR) Connectors, 122 Series
 .80 mm Surface Mount, Right Angle Receptacle, Shielded



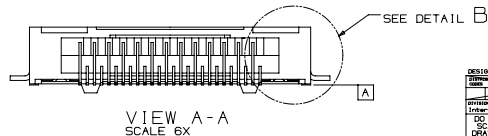
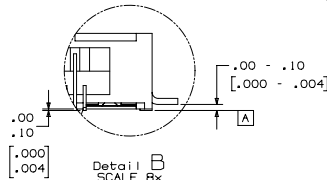
RECOMMENDED PC BOARD LAYOUT
 (MOUNT SIDE VIEW)
 N = TOTAL NUMBER OF POSITIONS
 SCALE 6X



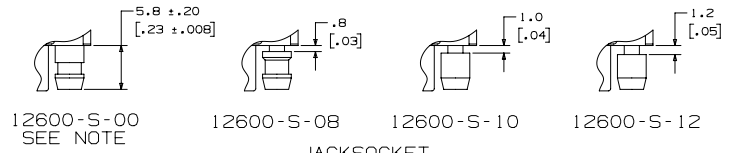
RECOMMENDED PANEL CUT-OUT
 (MAXIMUM PANEL THICKNESS 1.2MM)

POSITION	DIM. "X"	DIM. "Y"
14	10.5 [.41]	14.4 [.57]
26	15.3 [.60]	19.2 [.76]

RECOMMENDED PANEL CUT-OUT DIMENSION TABLE
 TABLE 2



THE DIMENSION OF PIN TAILS LOWER SURFACE TO DATUM "A" SURFACE: 0.00 TO 0.10 (.000 TO .004).
 NOTE: THE CONNECTOR SHOULD BE ON FLAT FIXTURE SURFACE WHEN THE DIMENSIONS ARE MEASURED.



12600-S-00
 SEE NOTE

12600-S-08

12600-S-10

12600-S-12

JACKSOCKET
 M2 X 0.4

NOTE: JACKSOCKET 12600-S-00 COMES FACTORY INSTALLED IN CONNECTOR 122XX-B250-00FR. IT IS FIXED WITH THREAD LOCKING ADHESIVE AND CANNOT BE REMOVED.

PANEL THICKNESS	CONNECTOR	JACKSOCKET
NO PANEL	122XX-B250-00FR	FACTORY INSTALLED (SEE NOTE)
0.8±0.1MM	122XX-B200-00FR	12600-S-08 (ORDER SEPARATELY!)
1.0±0.1MM	122XX-B200-00FR	12600-S-10 (ORDER SEPARATELY!)
1.2±0.1MM	122XX-B200-00FR	12600-S-12 (ORDER SEPARATELY!)

SELECTION TABLE FOR PANEL MOUNTING
 TABLE 3

ORDERING INFORMATION:
 122XX-82X0-00FR

CONTACT QUANTITY
 (SEE TABLE 1)

SCREW LOCK OPTION: (SEE TABLE 3)

- 0-NONE (RIA E1 & C1 APPLY)
- 5-WITH 12600-S-00 NON-REMOVABLE SCREW LOCK (RIA E5 & C3 APPLY)

DESIGN REFERENCE	REV. 001	REV. DATE AND DESCRIPTION	REV. 002	REV. DATE AND DESCRIPTION	REV. 003	REV. DATE AND DESCRIPTION
3M SHRUNK DELTA RIBBON (SDR) CONN. 122XX-82X0-00FR	001	08/07/2011	002	08/07/2011	003	08/07/2011
<p>3M SHRUNK DELTA RIBBON (SDR) CONN. 122XX-82X0-00FR</p> <p>3M PART NUMBER: 122XX-82X0-00</p> <p>3M PART NUMBER: 122XX-82X0-00</p>						

122XX-82X0-00FR

B

A