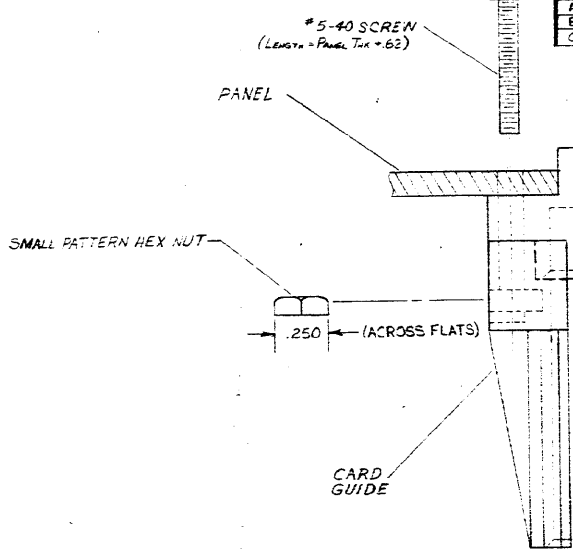
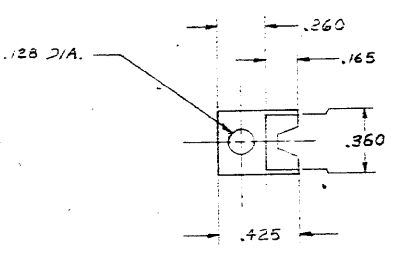


© 1969 BY AMP INCORPORATED. ALL RIGHTS RESERVED. AMP PRODUCTS COVERED BY PATENTS AND/OR PATENTS PENDING.

REVISIONS			
REV.	DESCRIPTION	DATE	APPROVED
0	REL. PER NGS 9-14352-1 & 2	6-19-69	EMS
A	REVISED PER EDN. TD-14352	12-4-69	
B	REVISED PER EDN. TD-14352	2-3-70	258
C	.62 WAS .59 TFC-1570	2-18-70	



**RECORD PRINT**  
RETURN TO FILE

BLUE	67764-2
BLACK	67764-1
COLOR	PART NO.

NOTE: ALL DIMENSIONS REFERENCE

UNLESS OTHERWISE SPECIFIED DIM. ARE IN INCHES. TOLERANCES ON: DECIMALS .010 ANGLES 2°	CONTRACT NO.	<b>AMP</b>	AMP INCORPORATED HARRISBURG, PENNSYLVANIA	
	DR. <i>Printed 4/22/69</i>		NAME	CARD GUIDE, END
MATERIAL: GLASS-FILLED NYLON	CHK. <i>Edwards 4/19/69</i>	APPD. <i>Edwards 4/19/69</i>	SIZE	NUMBER
HEAT TREAT <i>H</i>	OTHER APPD.	SCALE: 2:1	<b>B 100779</b>	<b>67764</b>
FINISH <i>H</i>		BY	CALC	ACTUAL
				SHEET 1 OF 2

AMP INFO  
LDC PRINT DMT  
AD 25

©1969 BY AMP INCORPORATED. ALL RIGHTS RESERVED. AMP PRODUCTS COVERED BY PATENTS AND/OR PATENTS PENDING.

**REVISIONS**

LTR	DESCRIPTION	DATE	APPROVED
0	Released Per NPS 9-11252	6-23-69	
A	Revised & Redrawn Per NEN TP-1132 See Sheet 1 of 2 For Revisions	12-17-69	

These Card Guides are recommended for use with the TWIST-TWIST Connectors listed below


**BLACK**  
**67764-1**

- 67031-7
- 67031-9
- 1-67031-3
- 1-67031-4
- 1-67031-5
- 1-67031-7
- 1-67031-8
- 2-67031-2
- 2-67031-4
- 2-67031-6
- 2-67031-7
- 2-67031-8
- 3-67031-1
- 3-67031-2
- 3-67031-3
- 3-67031-6
- 3-67031-8
- 3-67031-9
- 4-67031-1
- 4-67031-2
- 67040-1
- 67040-2
- 67040-4
- 67040-5
- 67040-6
- 67040-8
- 67686-1
- 67747-2

**BLUE**  
**67764-2**

- 67031-2
- 67031-3
- 67031-5
- 67031-6
- 1-67031-0
- 1-67031-1
- 1-67031-9
- 2-67031-5
- 3-67031-4
- 4-67031-0
- 4-67031-4
- 67040
- 67040-3
- 67040-9
- 1-67040-1
- 1-67040-2
- 67077-1
- 67747-1

**RECORD PRINT**  
RETURN TO FILE

UNLESS OTHERWISE SPECIFIED DIMENSIONS ARE IN INCHES TOLERANCES ON: DECIMALS 1/16" ANGLES 1/2°	CONTRACT NO.		 AMP INCORPORATED HARRISBURG, PENNSYLVANIA
	DR. <i>W. J. ...</i>	DATE <i>12-17-69</i>	
MATERIAL	NAME		<b>CARD GUIDE - END</b>
	APPD.	REL. <i>...</i>	
DSGN APPD.	SIZE <b>A</b>	CODE IDENT NO. <b>00779</b>	NUMBER <b>67764</b>
OTHER APPD.	SCALE <i>1/16" = 1"</i>	SHEET <b>2 of 2</b>	