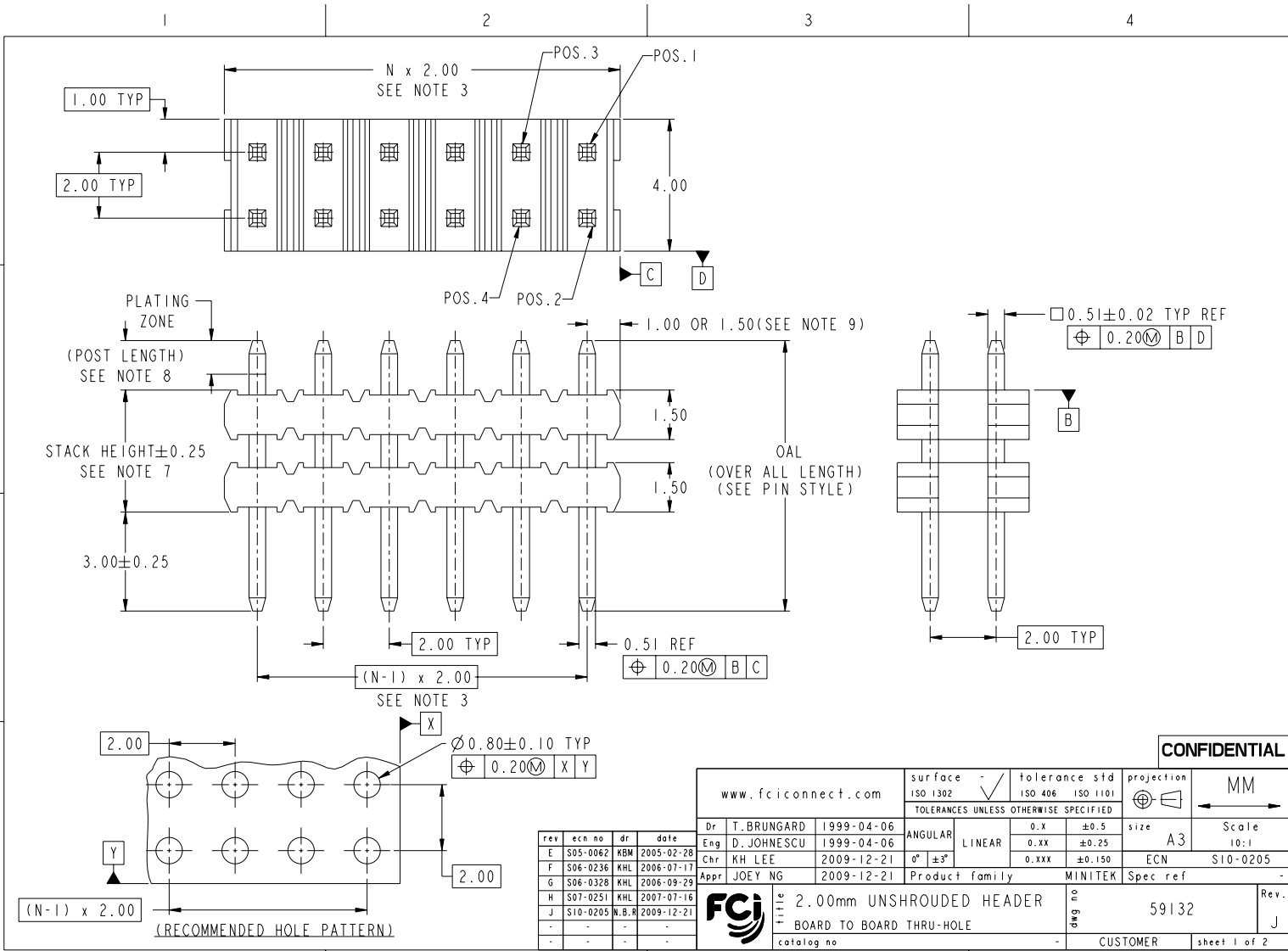


Copyright FCI



rev	ecn no	dr	date
E	S05-0062	KBM	2005-02-28
F	S06-0236	KHL	2006-07-17
G	S06-0328	KHL	2006-09-29
H	S07-0251	KHL	2007-07-16
J	S10-0205	N.B.R	2009-12-21

www.fciconnect.com		surface -	tolerance std	projection	MM
Dr	T. BRUNGARD	ISO 1302	ISO 406 ISO 1101	size	A3
Eng	D. JOHNESECU	TOLERANCES UNLESS OTHERWISE SPECIFIED		ECN	S10-0205
Chr	KH LEE	ANGULAR	0.X ±0.5	Spec ref	-
Appr	JOEY NG	LINEAR	0.XX ±0.25		
			0.XXX ±0.150		
		Product family	MINITEK		
2.00mm UNSHROUDED HEADER			dwg no	59132	Rev. J
BOARD TO BOARD THRU-HOLE					
catalog no		CUSTOMER		sheet 1 of 2	

CONFIDENTIAL

PRODUCT NUMBER DESCRIPTION :
59132- X XX - XX - XXX XLF

PLATING
S = 0.38µm GOLD ON CONTACT AREA
0.38µm GOLD ON TAIL
G = 0.76µm GOLD ON CONTACT AREA
0.76µm GOLD ON TAIL
F = 0.20µm GOLD ON CONTACT AREA
0.20µm GOLD ON TAIL
T = 0.76µm GOLD ON CONTACT AREA
2.54µm 100% MATTE TIN ON TAIL

LEAD FREE (SEE NOTE 11)
RETENTION (SEE NOTES 6 & 10)
R: RETENTIVE LEG
STACKER HEIGHT (SEE NOTE 7)
PACKAGING: - = BAGS
(SEE NOTE 5) U = TUBES
POSITIONS PER ROW = "N"
(02 TO 25)
OMIT FROM PRODUCT NUMBER FOR
LEAD FREE WITH RETENTIVE LEG PRODUCT

NOTES:
1. MATERIAL HOUSING: HIGH TEMPERATURE THERMOPLASTIC
UL 94V-0, COLOR BLACK
2. MATERIAL TERMINAL: COPPER ALLOY
③ TO DETERMINE DIMENSIONS:
N=NUMBER OF POSITIONS PER ROW
EX.: 10 POS., N x 2.00 = 20.00 TOTAL POSITIONS

PIN STYLE	OAL
22	08.2
24	09.6
26	10.2
28	11.8
30	13.5
32	14.1
34	15.6
36	17.1
38	19.1
40	21.1
42	18.0

- ⑨ DIM 1.0 APPLIES TO MOLDED SIDE(S) ONLY. IF SIDE(S) ARE BROKEN, DIM 1.5 MAX APPLIES.
⑩ OMIT FROM PRODUCT NUMBER IF FEATURE IS NOT APPLICABLE.
⑪ P/N:59132-XXXLF IS SAME AS P/N:59132-XXX. THE SUFFIX 'LF' IS ADDED FOR EASY LEAD FREE IDENTIFICATION.
12. THE HOUSING WILL WITHSTAND EXPOSURE TO 255°C PEAK TEMPERATURE FOR 10 SECONDS IN A CONVECTION, INFRA-RED OR VAPOR PHASE REFLOW OVEN.
13. THE HOUSING WILL WITHSTAND EXPOSURE TO 260°C PEAK TEMPERATURE FOR 10 SECONDS IN A WAVE SOLDER APPLICATION WITH A 1.57MM MINIMUM THICK CIRCUIT BOARD.
14. THIS PRODUCT MEETS EUROPEAN UNION DIRECTIVES AND OTHER COUNTRY REGULATIONS AS DESCRIBED IN GS-22-008.
⚠ 15. A ⚠ SYMBOL WILL BE NEXT TO ANY DIMENSION, VIEW OR NOTE WHICH HAS BEEN MODIFIED WITH THE CURRENT DRAWING REVISION.

4. 0.9kg MIN. PIN RETENTION IN EITHER DIRECTION.
5. PACKAGING:
(A) STANDARD PACKAGING: IN POLY BAGS.
(B) SPECIAL PACKAGING: IN TUBE.
FOR ALL SPECIAL PACKAGING,FCI MUST BE CONTACTED FOR AVAILABILITY IN SIZE REQUESTED.

⑥ RETENTION LEG:
2.3kg MAX INSERTION FORCE AND 1 kg MIN RETENTION FORCE PER RETENTIVE PIN USING 1.57 THICK CIRCUIT BOARD AND RECOMMENDED HOLE PATTERN. RETENTIVE LOCATION AT THE DISCRETION OF THE MANUFACTURER. RETENTION IS TWO PINS PER PART ADJACENT TO ONE ANOTHER.

⑦ STACK HEIGHT IS DETERMINED BY CUSTOMER APPLICATION REQUIREMENTS. SPECIFIED IN mm.
EXAMPLE: 3.7mm STACK HEIGHT=59132-XXX-XX-037X.

⑧ POST LENGTH IS DETERMINED BY: (OAL)-(3.00)-(STACK HGT.)
=POST LENGTH.MINIMUM MATING LENGTH TO BE 2.0mm.

CONFIDENTIAL

www.fciconnect.com			surface - ✓ ISO 1302	tolerance std ISO 406 ISO 1101	projection MM
			TOLERANCES UNLESS OTHERWISE SPECIFIED		⊕
Dr	T. BRUNGARD	1999-04-06	ANGULAR	0.X	±0.5
Eng	D. JOHNECU	1999-04-06	LINEAR	0.XX	±0.25
Chr	KH LEE	2009-12-21	0° ±3°	0.XXX	±0.150
Appr	JOEY NG	2009-12-21	Product family	MINITEK	Spec ref
FCI			2.00mm UNSHROUDED HEADER BOARD TO BOARD THRU-HOLE		59132
catalog no			CUSTOMER		sheet 2 of 2