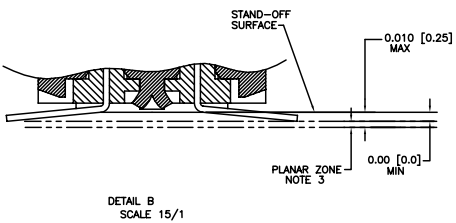
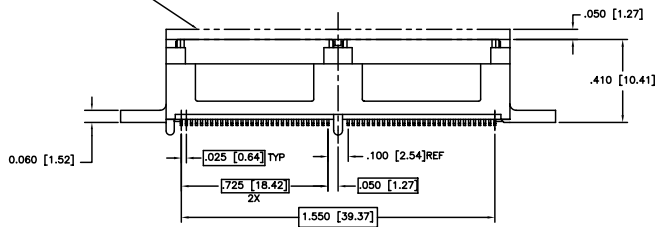
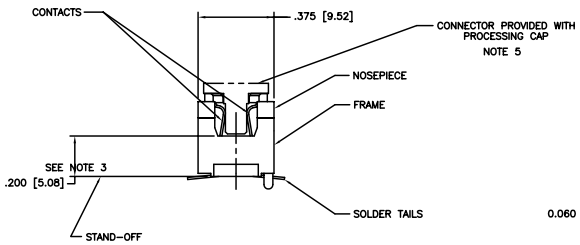
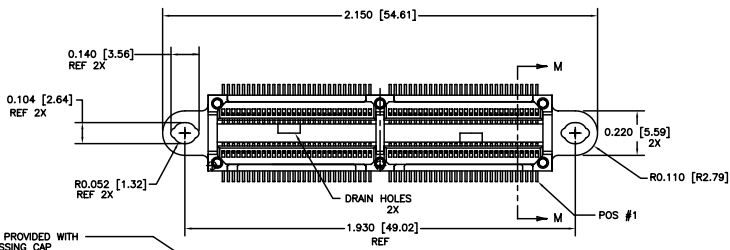
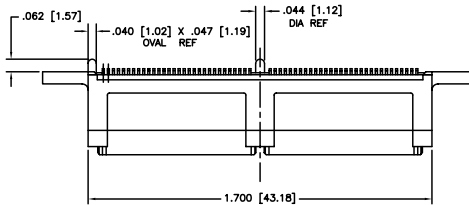
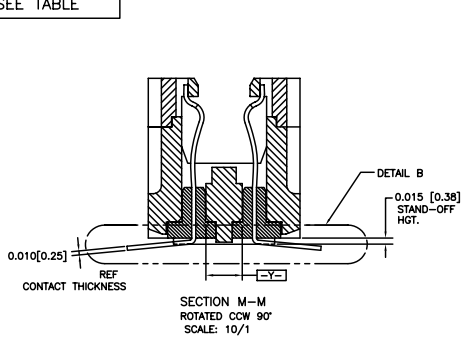
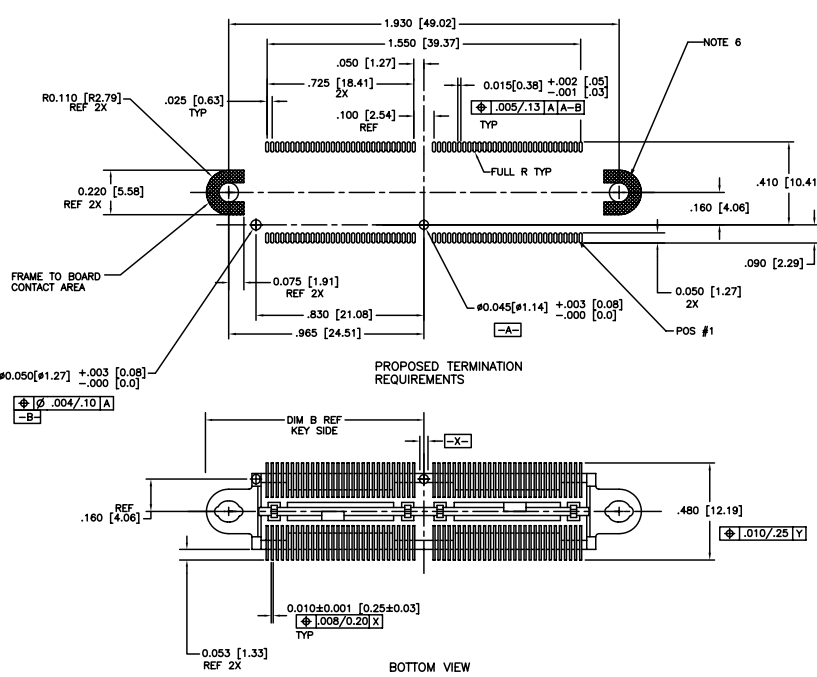


PRODUCT NUMBER
SEE TABLE



mat'l code		surface	tolerance	projection	product family
ISO 1902		ISO 406	ISO 1101	INCH/MM	MICROPAX
tolerances unless otherwise specified		angles		linear	scale 1:1
itr	ecm no	dr	date	linear	scale 1:1
A	V03-0849	GIP	8/04/03	XXX/01/XXX/03	title .025M SURFACE MOUNT RECEIPT, DOUBLE MODULE
B	M05-0082	MHT	5/06/05	XXX/05/XXX/03	dwg no 10022034
C	M06-0279	MNR	7/22/06	0°±2°	sheet 1 of 2 size A3
D	M08-0251	MHT	9/08/08	dr T. BRUNGARD 1/21/03	type Product Customer Drawing
				engr M. GRAY 1/21/03	
				chr M. GRAY 1/21/03	
				appd M. GRAY 1/21/03	
sheet index	revision sheet	D	D		
	1	2			

PRODUCT NUMBER	NO. OF CONTACTS	CONTACT PLATING NOTE 2
10022034-001	120	30 GXT
10022034-001LF		



- NOTES:
- MATERIALS:
DIELECTRIC: LCP
CONTACTS: BeCu
FRAME: ZINC ALLOY #3
 - PLATING:
SOLDER TAILS: 150u"/3.81um Sn Pb
FRAME: 100u"/2.54um Ni
CONTACTS: 30u"/.76um GXT OVER 50u"/1.27um Ni
OR 60u"/1.52um GXT OVER 75u"/1.90um Ni.
LEAD FREE OPTION:
SOLDER TAILS: 150u"/3.81um Sn
FRAME: 100u"/2.54um Ni
CONTACTS: 30u"/.76um GXT OVER 50u"/1.27um Ni
OR 60u"/1.52um GXT OVER 75u"/1.90um Ni.
 - WHEN THE CONNECTOR IS MATED WITH THE OPPOSITE HALF, THE PARALLEL BD. TO BD. HGT. IS .47 ±.01. (APPLYS TO VERT. THRU & SURFACE MT. STYLES)
 - WHEN MEASURED IN THE UNRESTRAINED STATE, THE BOTTOM EDGE OF ALL SOLDER TAIL TIPS SHALL LIE IN A PLANAR ZONE AS DESCRIBED IN DETAIL B. THE ZONE IS DEFINED BY A PLANE ESTABLISHED ACROSS THE BASE OF THE TWO MOUNT LUG/STAND-OFFS.
 - DO NOT REMOVE PROCESSING CAP UNTIL SOLDERING IS COMPLETED. CAP WILL PREVENT POTENTIAL NOSE PIECE BOW DURING HIGH TEMP. SOLDERING PROCESS.
 - FOR HOLDDOWN APPLICATION DATA, INCLUDING HOLE SIZES FOR VARIOUS TYPES OF HARDWARE SEE TA-932.
 - PART NUMBER WITH LF SUFFIX AT THE END IS LEAD FREE.
 - IF "LF" P/N THE PRODUCT MEETS EUROPEAN UNION DIRECTIVES AND OTHER COUNTRY REGULATION AS DESCRIBED IN GS-22-008.
 - THE HOUSING WILL WITHSTAND EXPOSURE TO 260°C PEAK TEMPERATURE FOR 20 SECONDS IN A CONVECTION, INFRA-RED OR VAPOR PHASE REFLOW OVEN.
 - SEE BUS-20-084 (SET-UP APPLICATION SPEC.) FOR REFERENCE.

mat'l code	surface	tolerance	projection	product family
	ISO 1902	ISO 406		MICROPAX
tr	ecr no	dr	date	title
D				.025M SURFACE MOUNT RECEPT, DOUBLE MODULE
				dwg no
				10022034
				sheet 2 of 2 size
				A3
				type
				Product Customer Drawing

PDM: Rev:D STATUS: Released Printed: Jul 22, 2010