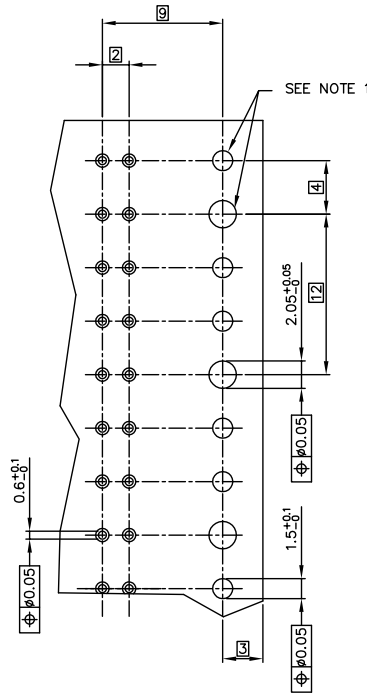
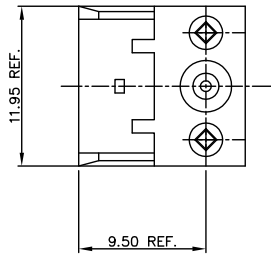
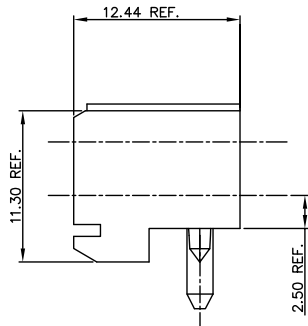
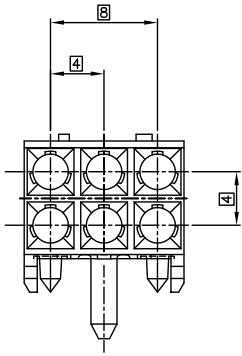
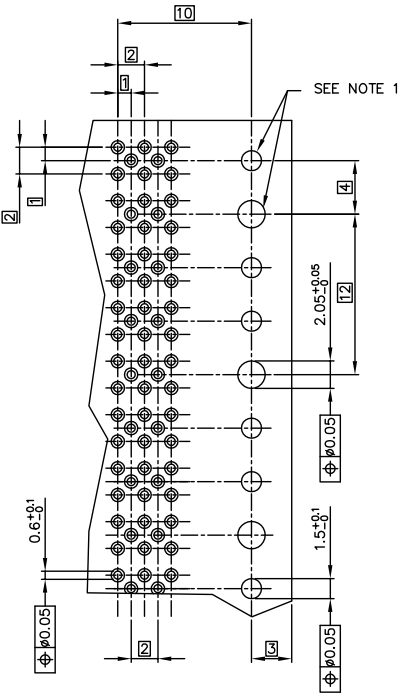


PRODUCT # 70244-101LF



RECOMMENDED HOLE PATTERN,
COMPONENT SIDE,
MINI-POWER

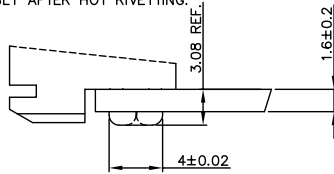


RECOMMENDED HOLE PATTERN,
COMPONENT SIDE,
MINI-COAX

NOTE:

- INDICATED HOLES ARE UNPLATED.
- MATERIAL:
LIQUID CRYSTAL POLYMER 30% GLASS
FLAME RETARDANT ACC. UL 94-V0
COLOR NATURAL.
- THIS PRODUCT WITH "LF" SUFFIX MEETS EUROPEAN UNIDIRECTIVES
AND OTHER COUNTRY REGULATIONS AS DESCRIBED IN GS-22-008.
- THE HOUSING WILL WITHSTAND EXPOSURE TO 260 DEGREE PEAK TEMPERATURE
FOR 10 SECONDS IN A WAVE SOLDER APPLICATION WITH A 1.6mm MINIMUM THICK
CIRCUIT BOARD.

ASSEMBLY AFTER HOT RIVETTING.

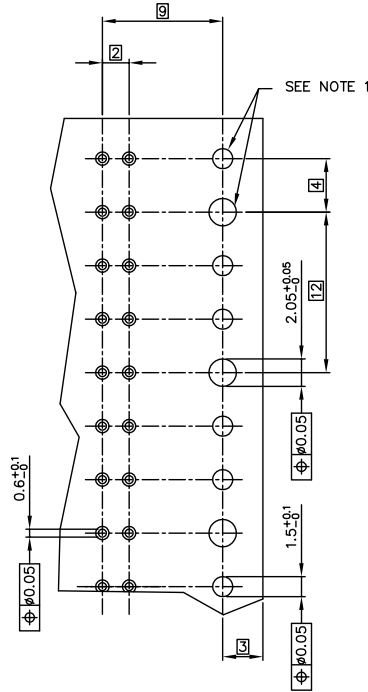
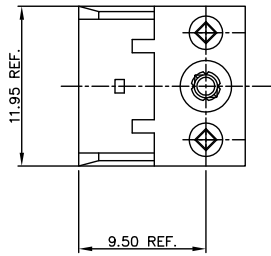
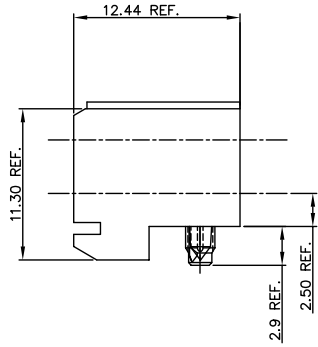
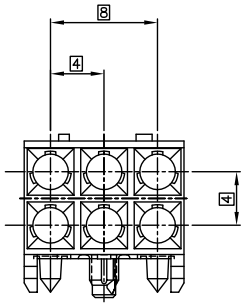


mat'l. code	tolerances unless otherwise specified	CUSTOMER COPY	ELECTRONICS www.ficonnect.com
SEE NOTE 2			
litr. ecn no. dr. date	projection	title	N.A. RECEPTACLE MINI-POWER/COAX HEAT STAKE
H 3008-0382 CU 050927 linear			
C H20755 DAN 921124 angles	mm	product family	METRAL (tm) code 215
D H40355 DDB 940616 dr. D. Andrews 910912	scale	size	
E H50047 RVH 950119 enhaf. E. Fejler 940616	S: 1	A2	70244
F H80710 BDB 981033 chr. Au Zanten 910912	sheet	1 of 2	1 of 2
G H90489 HME 990816 gddpk. Coolmans 950119	revision	H	
sheet 1 of 2	ind. sheet	2	

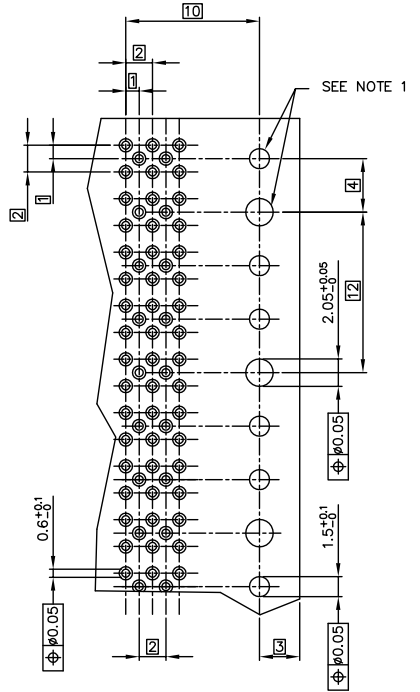
PDM: Rev.H STATUS: Released

Printed: May 19, 2011

PRODUCT NUMBER | 70244-102LF

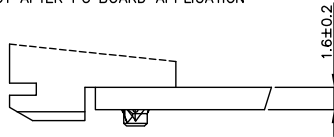


RECOMMENDED HOLE PATTERN,
COMPONENT SIDE.
MINI-POWER



RECOMMENDED HOLE PATTERN,
COMPONENT SIDE.
MINI-COAX

PRODUCT AFTER PC BOARD APPLICATION



NOTE:

1. INDICATED HOLES ARE UNPLATED.
2. MATERIAL:
LIQUID CRYSTAL POLYMER 30% GLASS
FLAME RETARDANT ACC. UL 94-V0
COLOR NATURAL.
3. THIS PRODUCT WITH "LF" SUFFIX MEETS EUROPEAN UNION DIRECTIVES
AND OTHER COUNTRY REGULATIONS AS DESCRIBED IN GS -22-008.
4. THE HOUSING WILL WITHSTAND EXPOSURE TO 260 DEGREE PEAK TEMPERATURE
FOR 10 SECONDS IN A WAVE SOLDER APPLICATION WITH A 1.6mm MINIMUM THICK
CIRCUIT BOARD.

mat'l. code	tolerances unless otherwise specified	CUSTOMER COPY	ELECTRONICS www.ficonnect.com				
SEE NOTE 2							
itr	ecn	no	dr	date	projection	title	code
H					linear	N.A. RECEPTACLE	
					angles	MINI-POWER/COAX PRESS PEG	
					dr	D. de Bli 940616	product family
					enh	E. Faljen 940616	MINI-PRESS (tm)
					chr	E. Faljen 940616	size
					app	coolmans 950119	dwg no
sheet	revisor				scale	S:1	A2
ind	sheet						70244
							215
							2 of -

PDM: Rev. 11 STATUS: Released

Printed: May 19, 2011