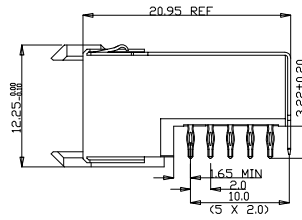
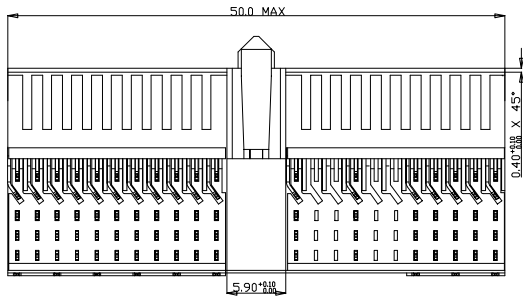


EMPTY CAVITY
 CAVITY LOADED WITH CONTACT



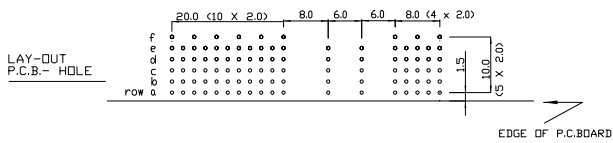
PERFORMANCE CHARACTERISTICS

CURRENT RATING: 1.5 A AT 20°C (FULLY LOADED)
 1 A AT 70°C (FULLY LOADED)

RATED VOLTAGE: 500 V AC (CONT /CONT)
 OPERATING TEMPERATURE: -55°C TO 125°C
 CONTACT RESISTANCE: 20 mΩ MAX
 INSERTION FORCE: 0.75N MAX/CONT
 EXTRACTION FORCE: 0.15N MIN /CONT
 INSULATION RESISTANCE: 10⁴ MΩ MIN

NOTES

- LEAD FREE INDICATOR : LF=LEAD FREE
 PERFORMANCE LEVEL INDICATOR
 (REF DWG NO. BS.C.201844.003)
- THIS PRODUCT IS CSA APPROVED.
THIS PRODUCT IS UL RECOGNIZED.
- FOR RECOMMENDED PTH DIMENSIONS REFER DRAWING : BS.A.201572.001
- THIS PRODUCT (LF) MEETS EUROPEAN UNION DIRECTIVES AND OTHER COUNTRY REGULATIONS AS DESCRIBED IN GS-22-008



rev	ecn no	dr	date
A	CONVERSION REVISION 02	KN	14-9-01
B	DG10-0110	NZ	05/30/10
-	-	-	-
-	-	-	-
-	-	-	-

Material		Spec ref	
Mat code		tolerance	projection
Heatreat		1DEC ±0.2 1DEC	MM
Plating/Finish		2DEC ±0.1 2DEC	
		ANGLES ±1° HOEREN	
Dr	16-09-99	M.Fret	
Eng		Product family	MILLIPACS
Chr		Model Name	ECN
Appr		Model Revision	REL Level
Pro/E file CAT. NO. HM2R10PACA39-...		BSC202468018	
		CUSTOMER DRAWING	
		Rev.	sheet 1 of 1
		B	

PDM: Rev B STATUS: Released Printed: Mar 15, 2011