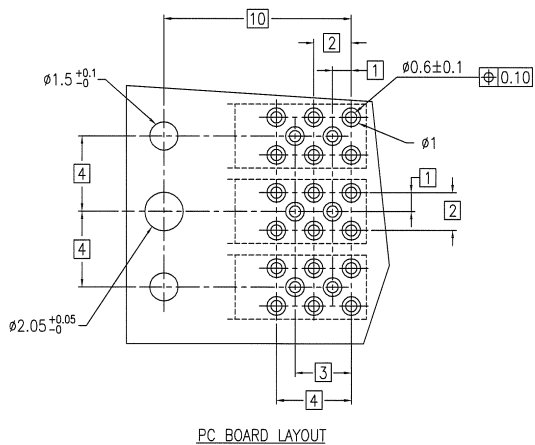
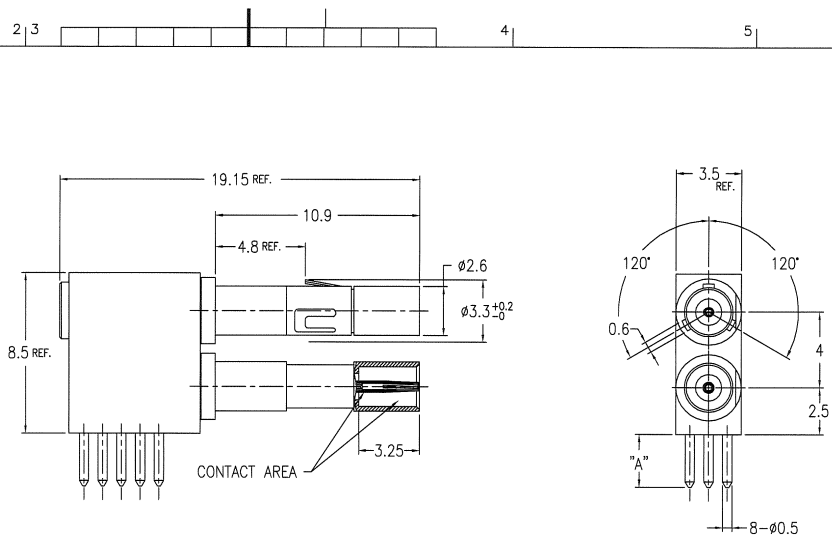


PRODUCT NO.	DIM "A"	PCB THICKNESS
62525-101	2.8	1.6mm
-101LF		
62525-102	3.8	2.4mm
-102LF		
62525-103	4.5	3.2mm
-103LF		



- NOTES
- MATERIAL : CONTACT AREA BeCu  
 SPRING CLIP BeCu  
 INSULATOR PTFE  
 OTHERS BRASS
  - PLATING : CONTACT AREA Au 0.8µm MIN. UNDER Ni 1.27µm MIN.  
 SPRING CLIP Ni 1.27µm MIN.  
 BODY Ni 1.27µm MIN.  
 INSERT CAP Ni 1.27µm MIN.  
 OTHERS Au FLASH UNDER Ni 1.27µm MIN.
  - FOR LEAD FREE P/N, THE PRODUCT MEET EUROPEAN UNION DIRECTIVES AND OTHER COUNTRY REGULATIONS AS DESCRIBED IN GS-22-008
  - THE HOUSING WILL WITHSTAND EXPOSURE TO 260°C PEAK TEMPERATURE FOR 10 SECONDS IN A CONVECTION, INFRA-RED OR VAPOR PHASE REFLOW OVEN.

mat'l. code				surface	tolerance	projection	product family	CODE
---				ISO 1302	ISO 406		METRAL	JP
tr description				tolerances unless otherwise specified			title	
A	RELEASED	J90148	YK	5/10/99	0.X ±0.3		METRAL MINI COAX RECE. R/A ASS'Y	
B	REVISED	J98200	YK	6/7/99	linear 0.XX ±0.3	MM		
C	REVISED	J20641	YK	12/16/02	0°±2'	scale 5:1		
D	REVISED	J05-0673	YK	10/21/05	dr Y.KODAIRA	5/10/99	dwg no	sheet 1 of 1 size
E	REVISED	J07-0030	SD	1/18/07	enrg S.OKUDAIRA	1/18/07	62525	A3
				chr	R. Ataraji	1/18/07		
				appd	S. Okudaira	1/18/07		
sheet index		revision sheet		E 1		type Customer Drawing		Rev. E