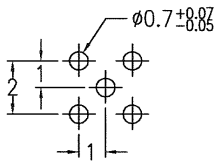
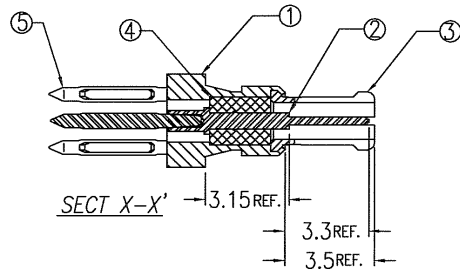
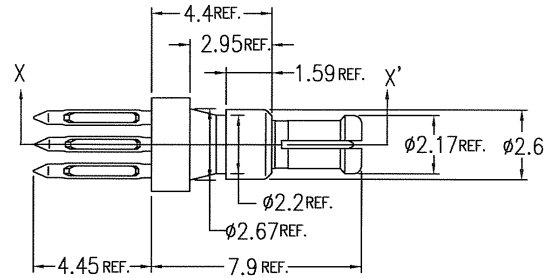
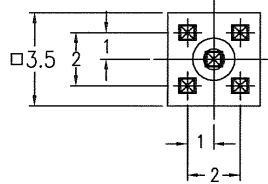


PRODUCT NUMBER
61428-001
61428-001LF

No.	DESCRIPTION	MATERIAL	FINISH	
			61428-001	61428-001LF
1	SHELL	BRASS	Au 0.05um MIN.	Au 0.05um MIN.
2	INNER CONTACT	BERYLLIUM COPPER	Au 1.27um MIN.	Au 1.27um MIN.
3	OUTER CONTACT	BERYLLIUM COPPER	Au 1.27um MIN.	Au 1.27um MIN.
4	INSULATOR	PTFE		
5	P.F. MALE PIN	PHOSPHER BRONZE	SnPb 0.50-1.5um	Sn 0.50-1.5um



RECOMMENDED PCB LAYOUT  
(TOLERANCES UNLESS OTHERWISE SPECIFIED ±0.1)



NOTE

- FOR LEAD FREE P/N, THE PRODUCT MEET EUROPEAN UNION DIRECTIVES AND OTHER COUNTRY REGULATIONS AS DESCRIBED IN GS-22-008
- THE HOUSING WILL WITHSTAND EXPOSURE TO 260°C PEAK TEMPERATURE FOR 10 SECONDS IN A CONVECTION, INFRA-RED OR VAPOR PHASE REFLOW OVEN

mat'l. code		surface		tolerance		projection		product family		CODE	
---		ISO 1302		ISO 406		ISO 1101		METRAL		JP	
litr		description		ecn no		dr		date		title	
A		RELEASED		J80432		YK		10/25/08		METRAL MINI COAX	
B		REVISED		J10260		YK		3/20/09		MALE PRESS-FIT TO B.P.	
C		REVISED		J05-0664		TS		10/21/05		scale 5:1	
D		REVISED		J07-0030		SD		1/18/07		sheet 1 of 1 size	
dr		T.SUKEKAWA		10/21/05		engr		S.OKUDAIRA		1/18/07	
chr		R. Shouji		1/18/07		appd		D. Nakamura		1/18/07	
sheet index		revision sheet		D		1				Rev. D	

PDM: Rev:D

STATUS: Released

Printed: Jun 07, 2010

FCJ  
FCconnect.com

Copyright FCJ

form: A3