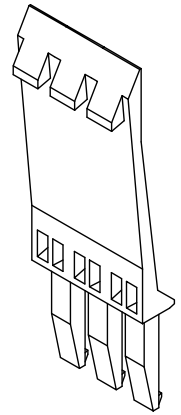
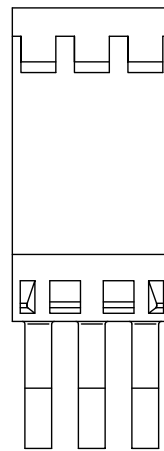
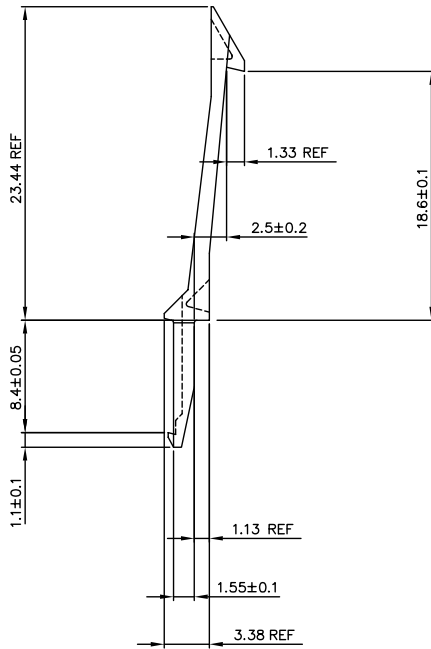
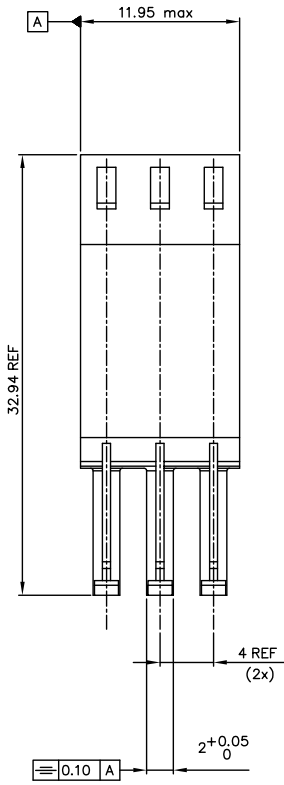
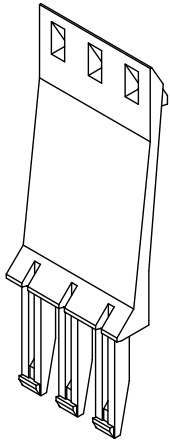


Partnumber:
85992-001LF



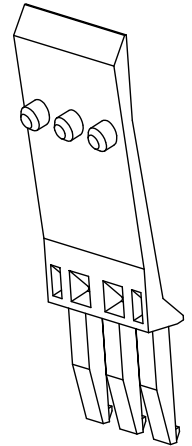
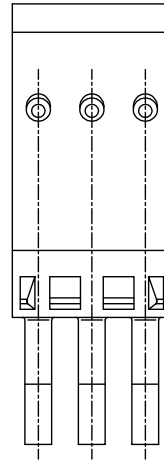
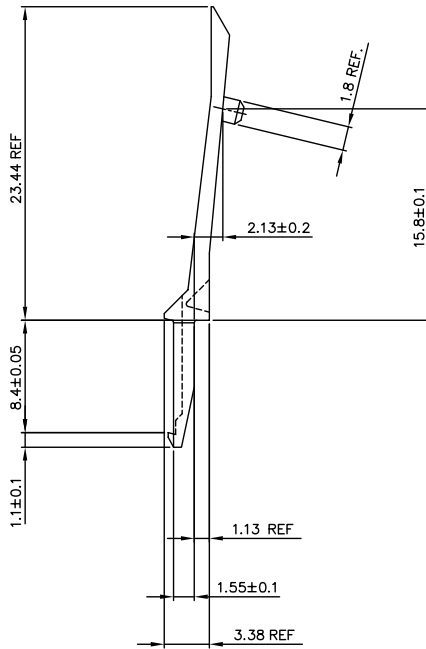
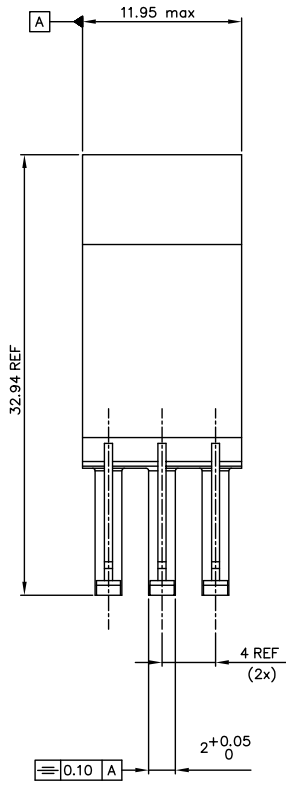
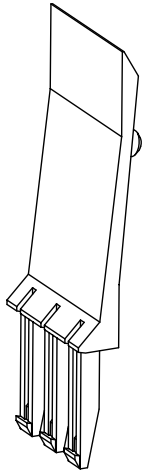
- NOTES:
 1 Material: Glass filled thermoplastic, color black, UL 94 V-0
 2. THIS PRODUCT WITH "LF" SUFFIX MEETS EUROPEAN UNION DIRECTIVES AND OTHER COUNTRY REGULATIONS AS DESCRIBED IN GS -22-008.
 3. THE PRODUCT IS NOT INTENDED TO BE EXPOSED TO A MANUFACTURING SOLDER PROCESS.

mat'l. code	See note 1	tolerances unless otherwise specified	CUSTOMER COPY	FCI ELECTRONICS
ltr	ecn noj dr date		projection	www.ficonnect.com
A	H70123 VWO 970221	linear	⊕	title 12 mm LATCH
B	H70802 VWO 971125			EMI shielded cable connector
C	H00525 VIB 001221	angles		product family Metra(tm)
D	9095-0408 CUJ 051021	dr H v Woensel 970221	mm	code 215
		ent H v Woensel 970221	scale	size dwg no 85992
		chr H Cooljans 970221	S: 1	sheet 1 of 3
		app H v Woensel 970221		
sheet	revision D D D			
index	sheet 1 2			

PDM: Rev.D STATUS: Released

Printed: May 19, 2011

Partnumber:
85992-002LF



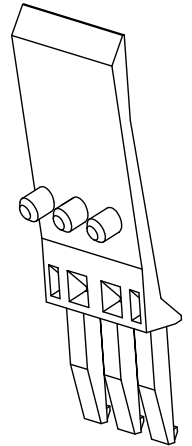
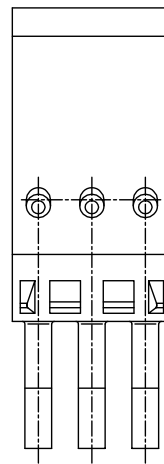
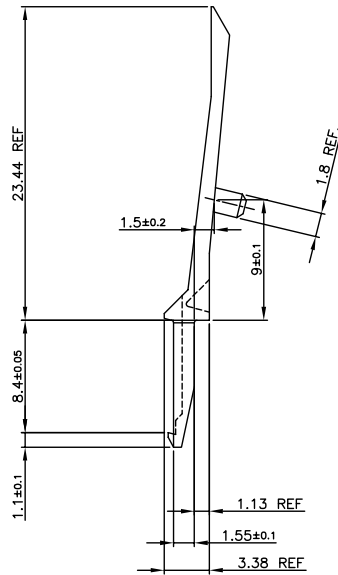
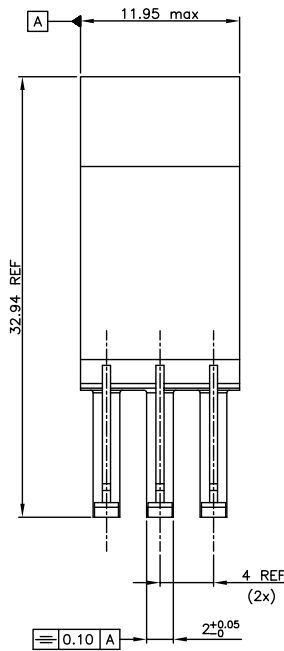
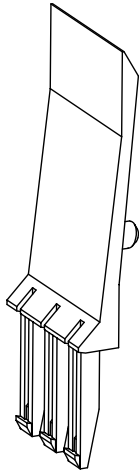
- NOTES:
- 1 Material: Glass filled thermoplastic, color black, UL 94 V-0
 2. THIS PRODUCT WITH "LF" SUFFIX MEETS EUROPEAN UNION DIRECTIVES AND OTHER COUNTRY REGULATIONS AS DESCRIBED IN GS -22-008.
 3. THE PRODUCT IS NOT INTENDED TO BE EXPOSED TO A MANUFACTURING SOLDER PROCESS.

mat'l. code	tolerances unless otherwise specified	CUSTOMER COPY	FCI ELECTRONICS www.ficonnect.com
litr. ecn noj dr date	linear	projection	title: 2 mm LATCH
	angles		EMI shielded cable connector
	dr H v Woensel 970221	mm	product family: Metral(tm)
	enl H v Woensel 970221	scale	code
	chr H Cooljans 970221	S: 1	215
	gpp H v Woensel 970221		sheet
sheet no	revision		2 of 2
ind	sheet		

PDM: Rev.D STATUS: Released

Printed: May 19, 2011

Part number
85992-003LF



- NOTES:
- 1 Material: Glass filled thermoplastic, color black; UL 94 V-0
 2. THIS PRODUCT WITH "LF" SUFFIX MEETS EUROPEAN UNION DIRECTIVES AND OTHER COUNTRY REGULATIONS AS DESCRIBED IN GS -22-008.
 3. THE PRODUCT IS NOT INTENDED TO BE EXPOSED TO A MANUFACTURING SOLDER PROCESS.

mat'l. code	See note 1	tolerances unless otherwise specified	CUSTOMER COPY	FCI ELECTRONICS www.ficonnect.com
litr	ecn no	dr date	projection	title 12 mm LATCH
p			linear	EMI shielded cable connector
			angles	product family Metral(tm)
			dr VISSCHERS IB 001221	code 213
			enh W v.ALSI 001221	size dwg no 85992
			chr W v.ALSI 001221	scale 5:1
			app W v.ALSI 001221	A2
sheet	revision			
ind	sheet			

PDM: Rev.D STATUS: Released

Printed: May 19, 2011