



Features

- 5 contact chambers for the power contacts of the series Han E (16 A)
- Space-saving and compact design
- Leading protective ground with screw terminal
- Crimp terminal with standard Han E contacts
- Use of standard tools
- Compatible with metal and plastic hoods of the series Han 3 A / 4 A
- The contacts can be removed with the aid of a removal tool from the termination side
- Degree of protection IP 65²⁾

Current carrying capacity

The current carrying capacity is limited by maximum temperature of conductor for conductors and contacts including terminals. The

Technical characteristics

Specifications DIN VDE 0627
 DIN VDE 0110

Approvals 

Inserts

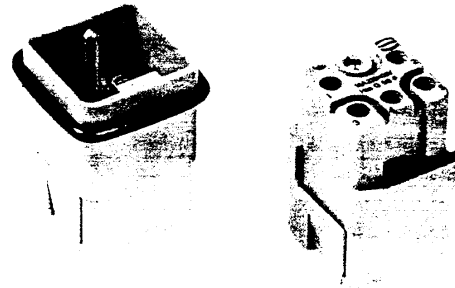
Number of contacts	5 + PE
Working current (see current carrying capacity)	16 A max.
Working voltage	230/400 V
Working voltage acc. to UL/CSA	600 V
Test voltage U_{rms}	2 kV
Pollution degree	3 (C)
Insulation resistance	$\geq 10^{10} \Omega$
Material	Polycarbonate
Temperature range	- 40 °C ... + 125 °C
Flammability acc. to UL 94	V 0
Mechanical working life - mating cycles	≥ 500

Contacts

Material	copper alloy
Surface	
- hard-silver plated	3 μm Ag
- hard-gold plated	2 μm Au over 3 μm Ni
Contact resistance	$\leq 1 \text{ m}\Omega$
Crimp terminal	
- mm^2	0.5 - 2.5 mm^2
- AWG	20 - 14

Number of contacts

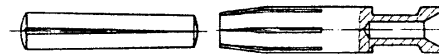
5 +



Inserts

Identification	Part No.		Drawing	Dimensions in mm
	Male insert (M)	Female insert (F)		
Crimp terminal Order crimp contacts separately	09 12 005 3001			
		09 12 005 3101		
Coding with loss of one contact	09 33 000 9915			<p>To avoid accidental incorrect mating of adjacent connectors a coding system is required. Coding is effected - by means of a code pin. For this reason a female contact has to be inserted into the selected chamber. The code pin has to be assembled into this contact from the mating side. The opposite male contact is omitted.</p>

Mounting example



Identification	Wire gauge (mm²)	Part No.		Drawing	Dimensions in mm
		Male contacts	Female contacts		
Crimp contacts	0.5	09 33 000 6121	09 33 000 6220		Operating contact Identification
Power contacts	0.75	09 33 000 6114	09 33 000 6214		
silver plated	1.0	09 33 000 6105	09 33 000 6205		
	1.5	09 33 000 6104	09 33 000 6204		
	2.5	09 33 000 6102	09 33 000 6202		
gold plated	0.5	09 33 000 6122	09 33 000 6222		Relay contact
	0.75	09 33 000 6115	09 33 000 6215		
	1.0	09 33 000 6118	09 33 000 6218		
	1.5	09 33 000 6116	09 33 000 6216		
	2.5	09 33 000 6123	09 33 000 6223		
Relay contact silver plated	0.75-1	09 33 000 6109			
	1.5	09 33 000 6110			
	2.5	09 33 000 6111			

Crimp contact identification

Identification	Wire gauge		Stripping length
no groove	0.5 mm²	AWG 20	7.5 mm
1 groove*	0.75 mm²	AWG 18	7.5 mm
1 groove	1 mm²	AWG 18	7.5 mm
2 grooves	1.5 mm²	AWG 16	7.5 mm
3 grooves	2.5 mm²	AWG 14	7.5 mm

* on the back crimp collar

Stock items in bold type

Hoods/Housings metal

Size 3 A

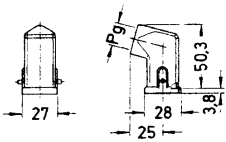


Identification	Standard	Part No. Han M	Han U	Pg	Drawing	Dimensions in mm
----------------	----------	-------------------	-------	----	---------	------------------

Hoods
side-entry



09 20 003 1640	09 37 003 1640	09 36 003 1640	11		
----------------	----------------	----------------	----	--	--



Identification

Part No.

Pg

Drawing

Dimensions in mm

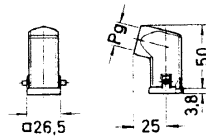
Hoods
side-entry



grey
09 20 003 0620

black
09 20 003 0627

11
11



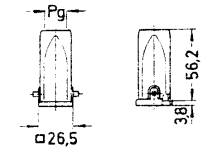
Hoods
top-entry



grey
09 20 003 0420

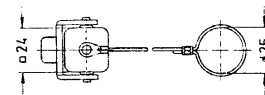
black
09 20 003 0427

11
11



Protection covers
for hoods

09 20 003 5442¹⁾
09 20 003 5441²⁾



Housings bulkhead mounting

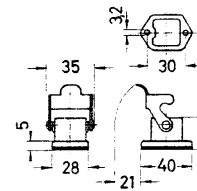


grey
09 20 003 0320

black
09 20 003 0327

-
-

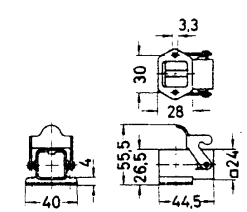
Panel cut out 22 x 22 mm



grey
09 20 003 0820

black
09 20 003 0827

-
-



Housings
surface mounting

1 side-entry

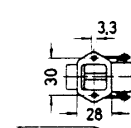


grey
09 20 003 0220

black

11

Panel cut out 22 x 22 mm



Hand
Drive