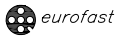
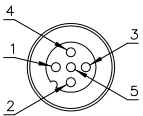
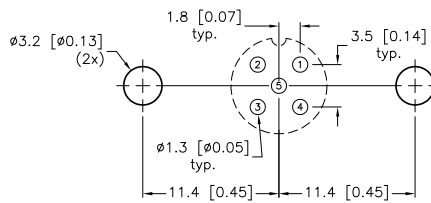
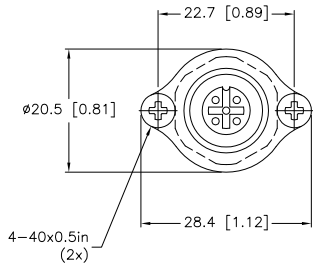


MALE END VIEW

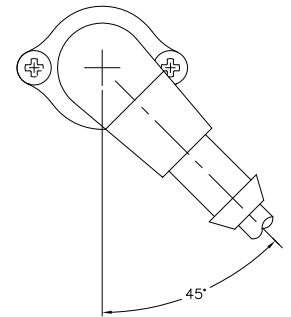


SPECIFICATIONS

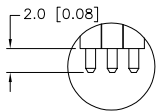
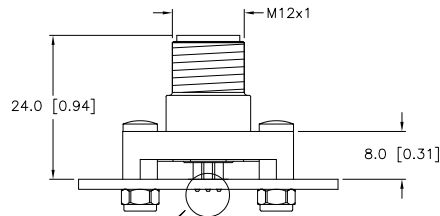
CONTACT CARRIER MATERIAL	NYLON OR TPU
CONTACT MATERIAL/PLATING	GOLD-PLATED BRASS
RATED CURRENT [A]	4.0 A
RATED VOLTAGE [V]	250 V
HOUSING MATERIAL	NICKEL-PLATED BRASS
NUMBER OF CONDUCTORS [AWG]	PCB PINS
TEMPERATURE RATING	-30°C to +80°C (-22°F to +176°F)
PROTECTION CLASS	MEETS NEMA 1,3,4,6P AND IEC IP68
SPACINGS	TO VDE 0110 GROUP C



BOARD LAYOUT
SCALE 2=1



RIGHT ANGLE
CONNECTOR ORIENTATION



DIMENSIONAL VIEW

SOURCE DRAWING - FOR REFERENCE ONLY

NOTES:

1. FOR OTHER RIGHT ANGLE CONNECTORS, ROTATE BOARD LAYOUT TO DESIRED ORIENTATION OR ROTATE 5-HOLE PINOUT IN INCREMENTS OF 60°.

RELATED DOCUMENTS 1. INSERT SHEET 10240168 2. 3. 4.	3RD ANGLE PROJECTION 	THIS DRAWING IS PROPERTY OF TURCK INC. USE OF THIS DOCUMENT WITHOUT WRITTEN PERMISSION IS PROHIBITED.	3000 CAMPUS DRIVE MINNEAPOLIS, MN 55441 1-800-544-7769 (763) 553-7300 (763) 553-0708 fax turck.com		
			TURCK INC High Technology Sensors and Automation Controls	DATE 11/02/99 SCALE 1=1.0	DESCRIPTION FS 4.5-PCB
MATERIAL SEE SPECIFICATIONS	ALL DIMENSIONS DISPLAYED ON THIS DRAWING ARE FOR REFERENCE ONLY CONTACT TURCK FOR MORE INFORMATION	DRFT IK DSGN	UNIT OF MEASUREMENT MILLIMETER [INCH]		IDENTIFICATION NO. U1110-5
FINISH SEE SPECIFICATIONS		DO NOT SCALE THIS DRAWING		FILE: U1110-5	SHEET 1 OF 1

E	DRAWING PROCESSED AS PART OF ECO 33971	CBM	04/07/11	33971
REV	DESCRIPTION	BY	DATE	ECO NO.