

### Ordering Information

Appearance	Item	Measured particle diameter	Model
	Air Particle Sensor Particle measurement type	0.3, 0.5, or 1.0 µm min.	ZN-PD03-S
	Air Particle Sensor Dust measurement type	5µm(10µm), 20µm(30µm), 50µm min. (µ is selectable)	ZN-PD50-S

### PC Software

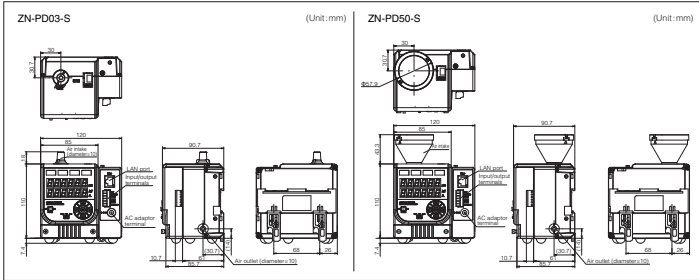
Appearance	Item	Model
	Wave Inspire ES	ZN-SW11-S

System Requirements: OS: Windows XP, Windows Vista  
CPU: Compatible with Intel processors, 1GHz or higher  
Memory: 1GB or more (2GB or more recommended)

### Accessories(Order Separately)

Appearance	Item	Model
	Change filter set for Particle measurement type	ZNB-PF1-S
	Change filter set for Dust measurement type	ZNB-PF2-S
	Exhaust tube(4m)	ZNB-PT4-S
	Exhaust tube(8m)	ZNB-PT8-S
	Filter for cleaning	ZNB-PC1-S

### Dimensions



### Specifications

Item	Model	Particle measurement type	Dust measurement type
Item	Model	ZN-PD03-S	ZN-PD50-S
Measurement method		90° sideways light-scattering method	
Light source		Semiconductor laser	
Measured particle diameter		0.3, 0.5, or 1.0 µm min.	5µm(10µm), 20µm(30µm), 50µm min.(See note 1)
Particle concentration		0 to 100,000particles/cf	0 to 50,000particles/cf
Sample flow rate		≥2.8L/min	≥6.0L/min
Status outputs(2 outputs)		Photo coupler output (Status outputs linked with clean levels)	
System error status output		Photo coupler input	
Trigger input		Photo coupler input	
Communication interface		Ethernet twisted pair cable connector (TCP/IP)	
Indicators		Clean Level: (level)(adjustable) 7-segment main display (red/digits):Count value (Selectable particles/cf, particles/Liter, counts of particles per measurement time) 7-segment sub-display (green/digit): Selected particle diameter	
Measure Mode		Real-time mode (by second)/Cycle mode(by set cycle)/Trigger mode(by trigger)	
Power supply voltage		DC19V (See note 2.)	
Current consumption		1A MAX	
Ambient temperature range		Operating: 0 to 35°C Storage: -15 to 50°C (with no icing or condensation)	Operating: 0 to 40°C Storage: -15 to 50°C (with no icing or condensation)
Ambient humidity range		Operating and storage: 35% to 85% (with no icing or condensation)	
Insulation resistance		20 MΩ min. at 500 VDC	
Withstand voltage		1,000 VAC, 50/60 Hz for 1 min	
Vibration resistance		110 to 55 Hz, 0.3-mm double amplitude, 50 min	
Materials		ABS	
Degree of protection		IP20	
Installation method		DIN track mount / Self standing	
Weight (Packed state)		Approx. 1.7kg	
Accessories		Air intake tube(Taking ID: Φ10mm, Length 1m)x1	AC adapter Air filter x1

Note 1: ( ) is selectable.  
Note 2: Must be used with specified AC adapter.

# OMRON

New

Production-Environmental  
Sensing Series **The First**

## Air Particle Sensor ZN-PD-S

Cost Effective and Wide range measurement size  
(From Particle to Dust)

## Optimized Quality Management with Real-time Particle Monitoring System



Particle measurement type  
( 0.3µm to 1µm)

Dust measurement type  
( 5µm to 50µm)

**OMRON Corporation**  
Industrial Automation Company  
Sensing Devices Division H.O.  
Growth Industry Promotion Dept.  
Shiohji Horikawa, Shimogyo-ku,  
Kyoto, 600-8530 Japan  
Tel: (81) 75-344-7211/Fax: (81) 75-344-7107

**Regional Headquarters**  
**OMRON EUROPE B.V.**  
Sensor Business Unit  
Carl-Benz-Str. 4, D-71154 Nuttingen,  
Germany  
Tel: (49) 7032-811-0/Fax: (49) 7032-811-199

**OMRON ELECTRONICS LLC**  
One Commerce Drive Schaumburg,  
IL 60173-5302 U.S.A.  
Tel: (1) 847-843-7900/Fax: (1) 847-843-7787

**OMRON ASIA PACIFIC PTE. LTD.**  
No. 438A Alexandra Road # 05-05/08 (Lobby 2),  
Alexandra Technopark, Singapore 119967  
Tel: (65) 6855-3011/Fax: (65) 6855-2711

**OMRON (CHINA) CO., LTD.**  
Room 2211, Bank of China Tower,  
200 Yin Cheng Zhong Road,  
PuDong New Area, Shanghai, 200120, China  
Tel: (86) 21-5037-2222/Fax: (86) 21-5037-2200

### Authorized Distributor:

© OMRON Corporation 2008 All Rights Reserved.  
In the interest of product improvement,  
specifications are subject to change without notice.

OMRON Industrial Automation Global: [www.ia.omron.com](http://www.ia.omron.com)

Cat. No. E397-E1-01(WEB1)

Printed in Japan  
(0709) (KW)

# Particle/contamination Real-time Monitoring

Thinking of upgrading from manual fixed-point particle measurement in your clean environment to a continuous monitoring solution? The ZN-PD03-S Particle Sensor (Particle Type) provides continuous high-precision monitoring at a very low set-up cost. It is ideal for traceability and fault analysis and substantially reduces labor expenses.

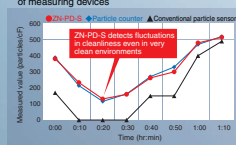
## Combines high-precision measurement with continuous monitoring

Measurement accuracy to rival a particle counter? **Top In Class**

The Particle Sensor generates air flow of 2.83 liters per minute through a combination of fully rectified internal design and high-suction fan. Measurement accuracy is close to that of a particle counter, thanks to Omron laser-optic design technology as used in high-precision displacement sensors.



Typical air cleanliness readings from different types of measuring devices

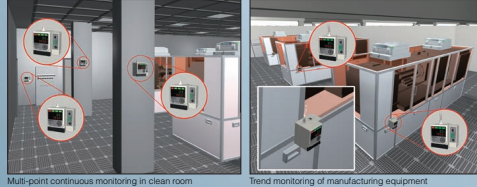


• Cleanliness levels varied in a CLASS 100 (approx.) environment using FDU air flow control.  
• Particle sensor measurements taken via scaling.

## Low-maintenance design for continuous measurement

The maintenance workload is reduced substantially through a combination of long-lasting fan construction and intermittent laser mode designed to prolong the life span of the laser. Maintenance costs are also much lower since the Particle Sensor does not need an external pump which tends to require frequent replacement.

Examples of use



Multi-point continuous monitoring in clean room

## Particle measurement type Model ZN-PD03-S

**0.3µm 0.5µm 1.0µm**  
Simultaneous real-time sensing

Optimized Quality Management with Two valuable Models!

ALL NEW

# Ambient Dust Real-time Monitoring

Foreign matter in the production environment can affect the quality of finished products. Perhaps your production environment is affected by dust? The largest form of particles, typically carried by human operators and generated by machinery. The ZN-PD50-S Particle Sensor (Dust measurement type) provides the most simple and effective solution yet for monitoring dust levels.

## Measure dust levels and identify dust sources with a single unit

Efficient measurement of falling dust

The combination of a powerful fan and a funnel-shaped air intake efficiently captures falling dust. A built-in filter prevents large dust particles from entering the system and causing internal blockages. The filter is simple to replace.

Dust Catcher feature to identify dust sources

Double-sided tape on the pull-out Trap Box captures dust particles. The dust can then be analyzed under a microscope to determine the source.



Filter



Trap Box

Examples of use



Trend monitoring in cell manufacturing production line

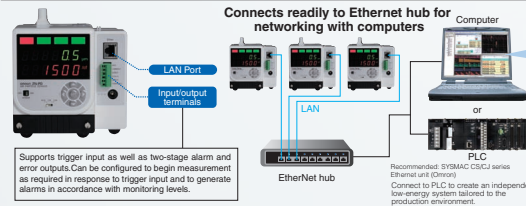


Dust monitoring on paint process

## Dust measurement type Model ZN-PD50-S

**5(10)µm 20(30)µm 50µm**  
Simultaneous real-time sensing

## Measurement data is used for trend analysis and early detection of problems

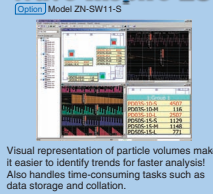


Connects readily to Ethernet hub for networking with computers

Supports trigger input as well as two-stage alarm and error outputs. Can be configured to begin measurement as required in response to trigger input and to generate alarms in accordance with monitoring levels.

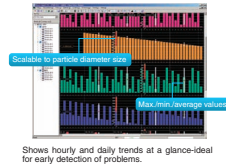
Recommended: SYMARC C5CJ series (Ethernet and Ethernet) Connect to PLC to create an independent low-energy system tailored to the production environment.

## Production-Environments Visualizer (PC software) Wave Inspire ES



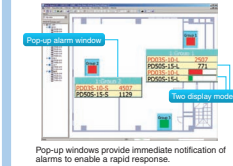
Visual representation of particle volumes makes it easier to identify trends for faster analysis! Also handles time-consuming tasks such as data storage and collation.

### Real-time analysis of measurement data



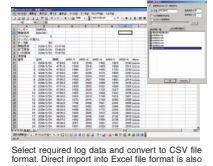
Shows hourly and daily trends at a glance-ideal for early detection of problems.

### Diagram layout of equipment and measuring devices



Pop-up windows provide immediate notification of alarms to enable a rapid response.

### Convert selected data to Excel format



Select required log data and convert to CSV file format. Direct import into Excel file format is also available.