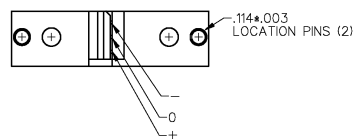
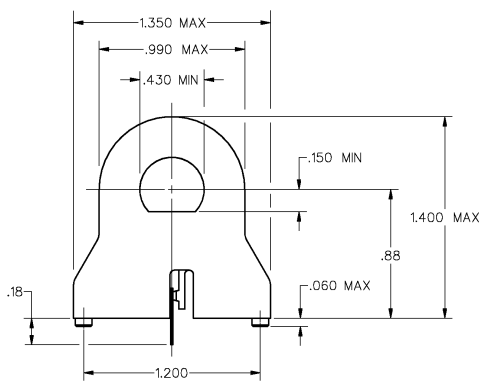
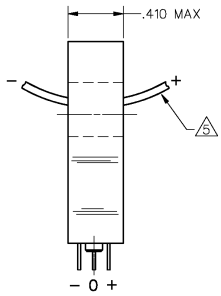
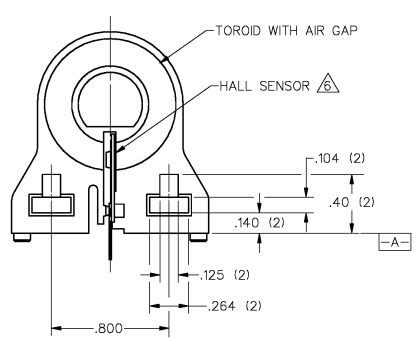
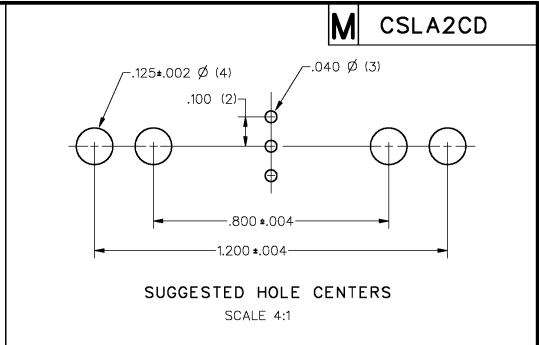


ISSUE NUMBER: CSLA2CD
 DRAWING NUMBER: CSLA2CD
 PAGE 1 OF 1
 REVISIONS:
 A1 10/25/90
 B1 05/20/91
 C1 05/20/91
 D1 05/20/91
 E1 05/20/91
 F1 05/20/91
 G1 05/20/91
 H1 05/20/91
 I1 05/20/91
 J1 05/20/91
 K1 05/20/91
 L1 05/20/91
 M1 05/20/91
 N1 05/20/91
 O1 05/20/91
 P1 05/20/91
 Q1 05/20/91
 R1 05/20/91
 S1 05/20/91
 T1 05/20/91
 U1 05/20/91
 V1 05/20/91
 W1 05/20/91
 X1 05/20/91
 Y1 05/20/91
 Z1 05/20/91
 FORMTEK
 JAS 17 JUL 89
 RELEASE NO. DR-3141-81
 REVISIONS X83397-C5

CHARACTERISTICS					
PARAMETER	MIN	TYP	MAX	UNITS	CONDITIONS/REMARKS
SUPPLY VOLTAGE	5.4	8.0	13.2	VOLTS	-25°C TO 85°C
SUPPLY CURRENT		13	20	mA	MAX @ -25°C, TYP @ 25°C, V _s = 8.0V, EXCLUDES LOAD
OUTPUT CURRENT	1			mA	SINKING OR SOURCING
OUTPUT VOLTAGE SWING	(-V) _s +1.25		(+V) _s -1.25	VOLTS	MAX CLAMPED @ 9.0 VOLTS MIN
SENSITIVITY	29.7		35.7	mV/A	@ V _s = 8.0 VOLTS & 25°C \sqrt{B}
LINEARITY					DEV FROM STR LINE FROM -I MAX TO +I MAX \sqrt{A}
V _{out} @ ϕ NI	.5(V _s)-2*		.5(V _s)+2*	VOLTS	25°C
TEMP ERROR - NULL	-.02		+.02	%/°C	-25°C TO 85°C
TEMP ERROR - GAIN	-.06		+.01	%/°C	-25°C TO 85°C



- NOTES
- \sqrt{A} SUGGESTED I MAX FOR LINEAR OPERATION IS 72 AMPS
 - 2 - RECOMMENDED MOUNTING IS 4-40 SQUARE NUT AND .375 LONG 4-40 SCREW
 - 3 - CONVENTIONAL CURRENT FLOW IN DIRECTION INDICATED WILL CAUSE AN INCREASE IN OUTPUT VOLTAGE
 - 4 - THE DEVICE CANNOT BE DAMAGED BY MAGNETIC OVERDRIVE
 - \sqrt{B} AT V_s OTHER THAN 8.0 VOLTS, SENSITIVITY = (NUMBER SHOWN) X V_s/8
 - \sqrt{C} BACKSIDE OF HALL SENSOR IS ELECTRICALLY CONNECTED TO THE "-" TERMINAL

CAUTION
HONEYWELL
ESD SENSITIVE
CLASS 3

THIS DRAWING COVERS A PROPRIETARY ITEM AND IS THE PROPERTY OF MICRO SWITCH, A DIVISION OF HONEYWELL. THIS DRAWING IS NOT TO BE COPIED OR USED WITHOUT THE APPROVAL OF MICRO SWITCH.

MICRO SWITCH
a Honeywell Division

CATALOG LISTING
CSLA2CD

THIRD ANGLE PROJECTION	
SCALE	2 : 1
DO NOT SCALE PRINT	
UNLESS OTHERWISE SPECIFIED TOLERANCES ARE	
ONE PLACE (L0)	±.030
TWO PLACES (L00)	±.015
THREE PLACES (L000)	±.005
ANGLES	±
WEIGHT	

MASTER REDUCED

FED. MFG. CODE #1829

CURRENT SENSOR

WEIGHT