

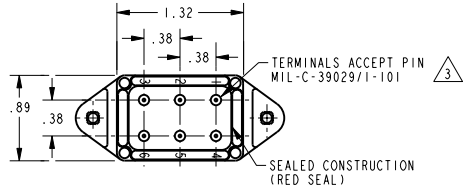
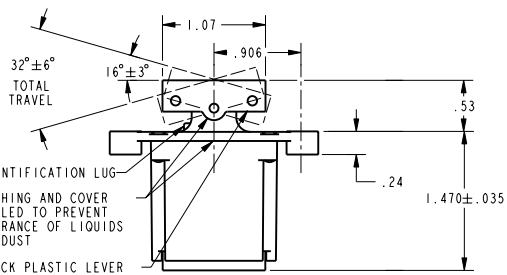
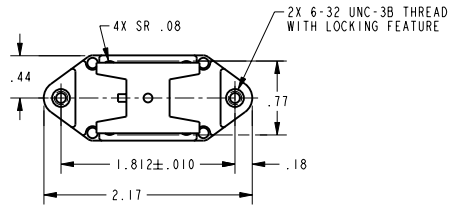
MICRO SWITCH
a Honeywell Division
FED. MFG. CODE 91929

**SWITCH - TOGGLE
ABOVE PANEL MOUNT**

CATALOG LISTING
102TP82 SERIES CHART 1

THIS DRAWING COVERS A PROPRIETARY ITEM AND IS THE PROPERTY OF MICRO SWITCH, A DIVISION OF HONEYWELL. THIS DRAWING IS NOT TO BE COPIED OR USED WITHOUT THE APPROVAL OF MICRO SWITCH

PTC/CAD 20
 DRAWN
 GJW 16 NOV 01 CHECK SAV 16 NOV 01 CHECK
 REVISIONS
 A 204410
 GJM 16 NOV 01
 CHECK
 4
 OF
 PAGE
 1
 OF
 CATALOG LISTING
102TP82 SERIES CHART 1
 REPLACES
 RELEASE NO. PR-20331



CATALOG LISTING	CIRCUIT MADE WITH BUTTON DEPRESSED ON			ELECTRICAL DATA
	LUG SIDE (1-2,4-5)	CENTER (1-2,4-5)	OPPOSITE LUG (2-3,5-6)	
102TP82-1	ON	OFF	ON	L191 15A 125, 250, 277 VAC 1/2HP 125 VAC 1HP 250, 277 VAC 5A 125 VAC "L"
102TP82-2	OFF	NONE	ON	
102TP82-3	ON	NONE	ON	
102TP82-21	NONE	OFF	ON	
102TP82-31	NONE	ON	ON	
102TP82-4	MOM OFF	NONE	ON	
102TP82-5	MOM ON	OFF	ON	
102TP82-6	MOM ON	NONE	OFF	
102TP82-7	MOM ON	OFF	MOM ON	
102TP82-8	MOM ON	NONE	ON	L192 10A 125, 250, 277 VAC 1/4HP 125 VAC 1/2HP 250, 277 VAC 3A 125 VAC "L"
102TP82-51	NONE	ON	MOM ON	
102TP82-61	MOM ON	OFF	NONE	

- NOTES
- 1 - CIRCUIT DESIGNATION AND MICRO SWITCH CATALOG LISTING MARKED ON SIDE OF SWITCH
 - 2 - SWITCHES ARE CAPABLE OF WITHSTANDING A TEMPERATURE OF 160° F CONTINUOUSLY AT FULL RATED LOAD
 - 3 - THE SEALING GROMMET SHALL SEAL ON A SMOOTH WIRE INSULATION OF Ø.040 TO Ø.083 (16-20 GAGE)
 - 4 - UNUSED TERMINAL HOLES MAY BE SEALED WITH PLUGS M83723/28-20 APPLIES ONLY TO "ON" AND "MOMENTARY ON" POSITIONS

THIRD ANGLE PROJECTION	
SCALE FULL	
DO NOT SCALE PRINT	
UNLESS OTHERWISE SPECIFIED TOLERANCES ARE	
ONE PLACE	(.01) ±.030
TWO PLACE	(.00) ±.015
THREE PLACE	(.000) ±.005
ANGLES	±
WEIGHT	

ANSI Y14.5M-1982 APPLIES