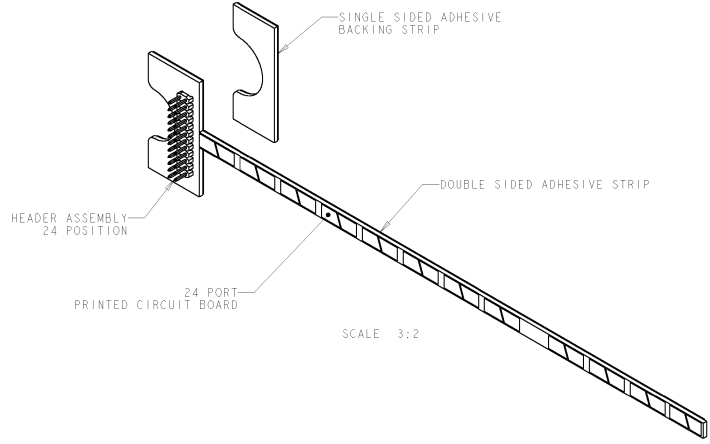
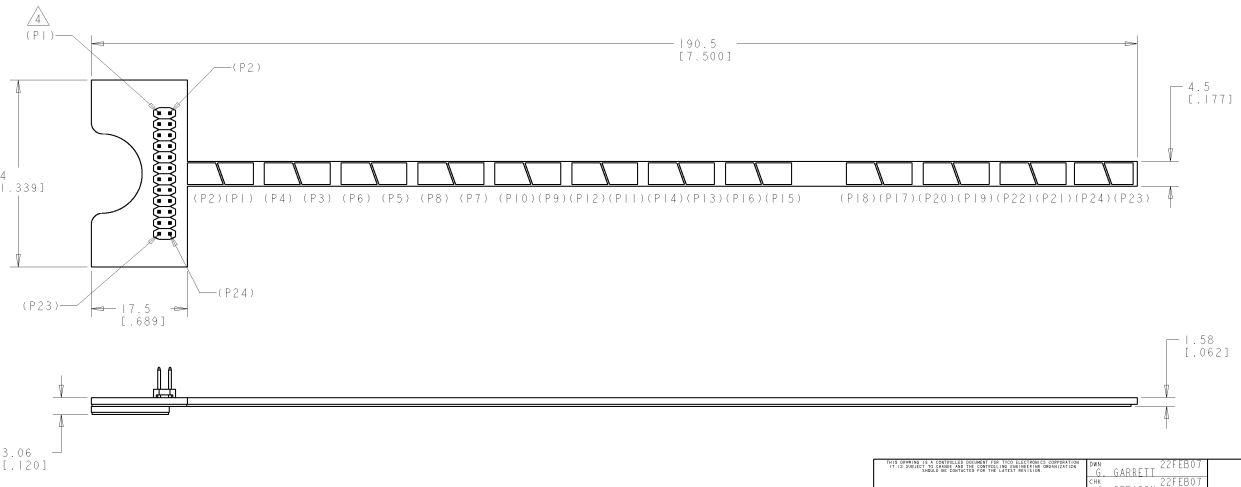


THIS DRAWING IS UNPUBLISHED. RELEASED FOR PUBLICATION BY TYCO ELECTRONICS CORPORATION. ALL RIGHTS RESERVED.

REV	DATE	BY	CHKD	DESCRIPTION
A	22FEB07	GG	JC	RLSD; NPP NSD07-019



- △ MATERIAL:
PRINTED CIRCUIT BOARD - LAMINATED PLASTIC FR-4, 1.2 [.047] THICK.
ADHESIVE TAPE - MYLAR, 0.25 [.010] THICK.
BACKING STRIP ASSEMBLY - FR-4 WITH MYLAR, 1.17 [.046] THICK.
HOUSING - THERMOPLASTIC, UL94V-0, BLACK.
CONTACTS - COPPER ALLOY.
- △ ALL DIMENSIONS SHOWN ARE NOMINAL.
- 3. PARENTHESIS () ARE FOR REFERENCE ONLY. NOT SHOWN ON BOARD.
- △ (P_) CALLOUTS ARE FOR PIN TO PAD REFERENCE ONLY.



DIMENSIONS: MM (INCHES)		DIMENSIONS: PLG - - PLG - - PLG - - PLG - - ANGLES - - FINISH - -		DWN: GARRETT 22FEB07 CHK: CREASON 22FEB07 APPR: CREASON 22FEB07	DATE: 22FEB07 BY: GG CHKD: JC
MATERIAL: △		FINISH: △		WEIGHT: - CUSTOMER DRAWING	PART NUMBER: 1933228-1 tyco Electronics Tyco Electronics Harrisburg, PA 17105-3400 AMPTRAC SENSOR, PCB, 24 PORT SIZE: A2 CASE CODE: 100779 DRAWING NO: 1933228 RESTRICTED TO: - SCALE: 3:2 SHEET: 1 OF 1 REV: A