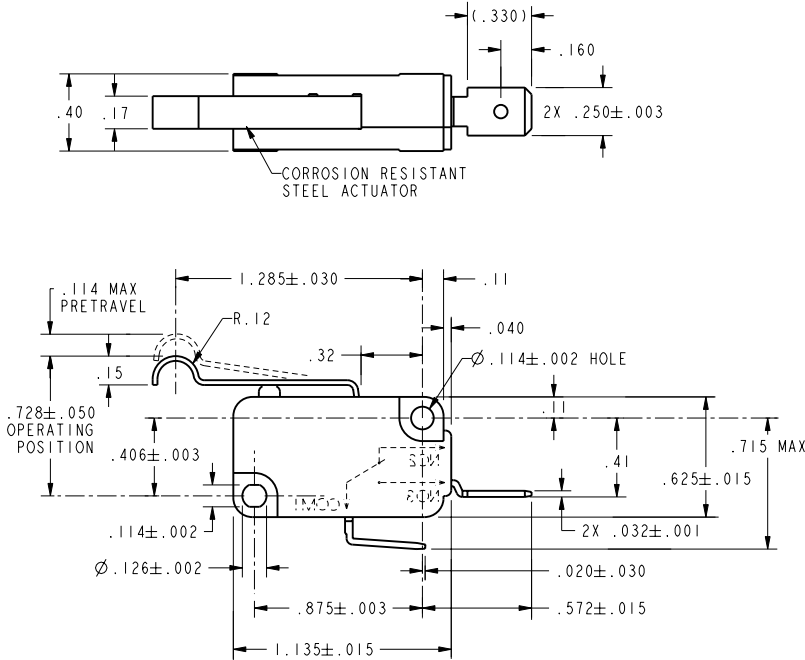


CW-B9945

REV	DOCUMENT	CHANGED BY	CHECK
3	202161	TSM 19JAN01	SAV
4	207443	TSM 17FEB03	SAV



CHARACTERISTICS	
OPERATING FORCE	110 GRAMS MAX
RELEASE FORCE	7 GRAMS MAX
DIFFERENTIAL TRAVEL	.025 MAX
OVERTRAVEL	.064 MIN
RELEASE TRAVEL	.015 MIN

ELECTRICAL DATA	
CONTACT ARRANGEMENT S P N O	
21A 1HP 125, 250, 277 VAC 2HP 250, 277 VAC	

UNLESS OTHERWISE SPECIFIED TOLERANCES ARE:	
NO PLACE	X $\pm .040 \pm 1$
ONE PLACE	.X $\pm .030 \pm 0,4$
TWO PLACE	.XX $\pm .015 \pm 0,15$
THREE PLACE	.XXX $\pm .005 \pm$
ANGLES	\pm
RAW MATERIAL	COMMERCIAL STANDARD

DRAWN	TSM	19JAN01
CHECK	SAV	19JAN01
THIS DRAWING COVERS A PROPRIETARY ITEM AND IS THE PROPERTY OF HONEYWELL. THIS DRAWING IS NOT TO BE COPIED OR USED WITHOUT THE PERMISSION OF HONEYWELL.		
DIMENSIONS ARE TO BE MET BEFORE PROTECTIVE COATINGS ARE APPLIED		
PTC 2D	ASME Y14.5M-1994	

Honeywell			
TITLE SWITCH, BASIC			
SIZE	DWG TYPE	DRAWING NAME	REV
B	I	V7-IV29E9-263	4
SCALE	2 : 1	WEIGHT	SHEET 1 OF 1