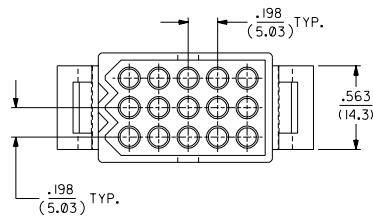
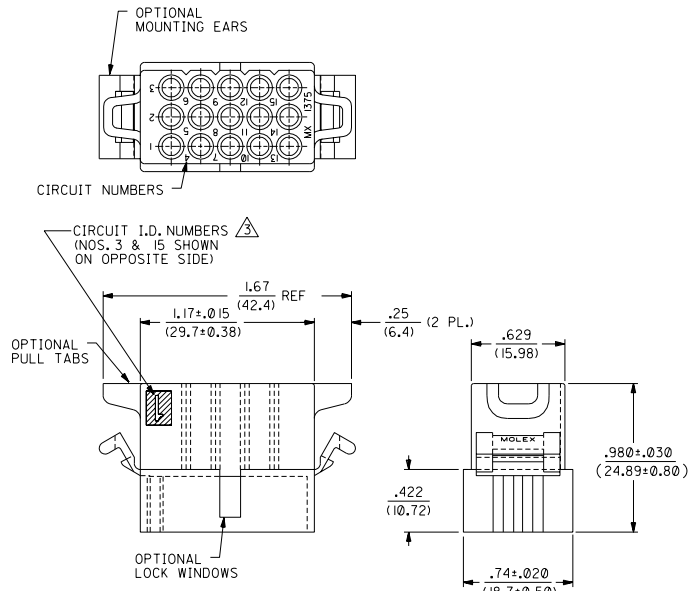
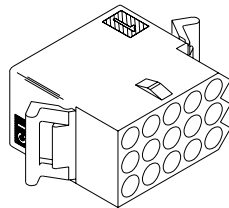
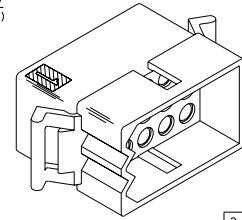


RECEPTACLE



PLUG



2	AD	REVISED & REDRAWN		
1	AD	REVISED & REDRAWN		

DIMENSIONS SHOWN (METRIC) INCH		REVISIONS	
UNLESS OTHERWISE SPECIFIED		MPG.	SH.
TOLERANCES ANGULAR ± 1/2°		REV.	LTR.
		REVISE ONLY ON CAD SYSTEM	
INCH METRIC		TITLE	
3 PLACE ± .010	---	.093/(2.36) HOUSINGS	
2 PLACE ± .014 ± 0.25	---	PLUG & RECEPTACLE	
1 PLACE --- ± 0.35	---	15 CIRCUIT .198/(5.03)C	
DRAFT WHERE APPLICABLE MUST REMAIN WITHIN DIMENSIONS		MOLEX INCORPORATED	
ORIG. BY: KBW		PART NO. SD-1375	
CHK'D. BY: RW		SHEET NO. 1 OF 2	
APP'D. RAS		DATE: CI/14/89	
SCALE: 2:1		NO. DRAWING CONTAINS INFORMATION THAT IS PROPRIETARY TO MOLEX INC. AND SHOULD NOT BE USED WITHOUT WRITTEN PERMISSION. CP	

AD	REV. DIM'S/ADD NOTES	UCP2004-1055	12/04/03
AC1	REINSTATE P/N	UCR2002-0571	
AC	OBSOLETE P/N	UCR2002-0270	02/01/02
AB	REVISED	UCR1099-0369	
AA1	REVISED	UCR 1998-0108	
AA	REVISED	PER ECN U61402	05/07/96 CM
Z	X-RELEASE -P4	ECN #16 1000	3-6-96 RW
Y2	OBS. -R2 VER'S.	ECR U6 0312	9/1/95 RW
Y1	ADD -P4 VERSION	ECR #14 0892	7-26-94 RW
Y	REMY. -P3'S PER	ECR U4 0622	7-13-94 RW
X	REVISE PER	ECR U4 0251	
W	REVISE PER	ECR U2-1820	
V	ADD -P3YM OPTION	ECR #191187	11-20-89 RW
T	ADD DYED OPTIONS	ECR #191070	
S	REVISED & REDRAWN	KBW 06-14-89	RW

PLUG			RECEPTACLE	
ORDER NO	ENG NO		ORDER NO	ENG NO
03-09-2151	1375-P		03-09-1151	1375-R
03-09-2159	1375-P4		03-09-1152	1375-R1
03-09-2158	1375-P7		03-09-1154	1375-R6
03-09-7158	1375-P7BK	OBSOLETE	03-09-1157	1375-R6-1
			03-09-6154	1375-R6BK

LEGEND FOR PLUG:

1375-P\*\*\*

OPTIONS:

BLANK = W/O EARS, W/ PULL TABS, W/O LOCK WINDOWS  
 2 = W/ STANDARD EARS, W/O PULL TABS, W/O LOCK WINDOWS  
 4 = W/ PREBENT EARS, W/O PULL TABS, W/ LOCK WINDOWS  
 6 = W/O EARS, W/O PULL TABS, W/ LOCK WINDOWS  
 7 = W/O EARS, W/ PULL TABS, W/ LOCK WINDOWS  
 8 = W/ PREBENT EARS, W/O PULL TABS, W/O LOCK WINDOWS

COLOR:

BLANK = NATURAL COLOR  
 AM = AMBER BK = BLACK BU = BLUE  
 BN = BROWN GY = GRAY CN = GREEN  
 OR = ORANGE RD = RED YW = YELLOW

LEGEND FOR RECEPTACLE:

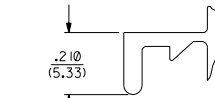
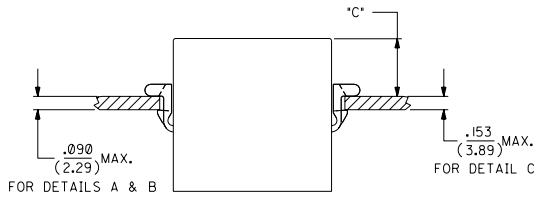
1375-R\*\*\*

OPTIONS:

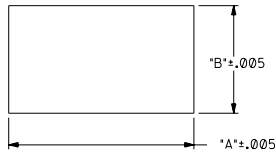
BLANK = W/ PREBENT EARS, W/O LOCK RAMPS  
 1 = W/O EARS, W/O LOCK RAMPS  
 6 = W/ STANDARD EARS & LOCK RAMPS  
 6-1 = W/O EARS, W/ LOCK RAMPS

COLOR:

BLANK = NATURAL COLOR  
 AM = AMBER BK = BLACK BU = BLUE  
 BN = BROWN GY = GRAY CN = GREEN  
 OR = ORANGE RD = RED YW = YELLOW

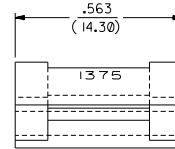


DETAIL A  
 .093/(2.36) STANDARD MOUNTING EAR  
 (SCALE 4:1)



RECOMMENDED PANEL OPENING

HOUSING	DIM. "A"	DIM. "B"	"C" PREBENT EAR	"C" STANDARD EAR	"C" SPECIAL EAR
PLUG	1.343/(34.11)	.760/(19.30)	.40/(10.2)	.36/(9.1)	
RECEPT. W/ RAMPS	1.240/(31.50)	.725/(18.42)	.41/(10.4)	.37/(9.4)	.31/(7.8)
RECEPT. W/O RAMPS	1.240/(31.50)	.655/(16.64)	.41/(10.4)	.37/(9.4)	.31/(7.8)



DETAIL B  
 .093/(2.36) PREBENT MOUNTING EAR  
 (SCALE 4:1)

NOTES

1. MOLEX PRODUCT SPEC 02-09 APPLIES.
  2. MATERIAL: NYLON TYPE 6/6, 94V-2.
- △ ETCHED CIRCUIT I.D. NUMBERS ON SIDE OF HOUSINGS TO BE PRESENT ON PARTS FROM TOOLS BUILT AFTER 2/28/94.

REV	DESCRIPTION	DATE	BY	CHKD.	APP'D.	SCALE	REVISIONS
AC1	SEE SHEET I						Y1 SEE SHEET I
AC	SEE SHEET I						Y SEE SHEET I
AB	SEE SHEET I						X SEE SHEET I
AA1	SEE SHEET I						W SEE SHEET I
AA	SEE SHEET I						V SEE SHEET I
Z	SEE SHEET I						T SEE SHEET I
AD	SEE SHEET I						S SEE SHEET I
LTR.	REVISIONS						LTR. REVISIONS

DIMENSIONS SHOWN IN METRIC INCH UNLESS OTHERWISE SPECIFIED TOLERANCES: ANGULAR ± 1/2°

PLACES	INCH	METRIC
3 PLACES	± .010	---
2 PLACES	± .014	± 0.25
1 PLACE	---	± 0.35

DRAFT WHERE APPLICABLE MUST REMAIN WITHIN DIMENSIONS

DRG. NO. SD-1375-\*

FILE NAME M1375.DWG

NO DRAWING CONTAINS INFORMATION THAT IS PROPRIETARY TO MOLEX INC. AND SHOULD NOT BE USED WITHOUT WRITTEN PERMISSION. CP IC

MOLEX INCORPORATED U.S.A. SHEET NO. 2 DATE 6/14/89