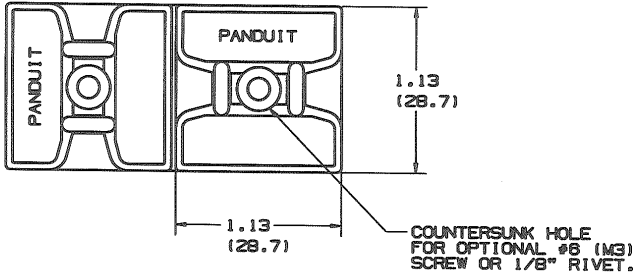


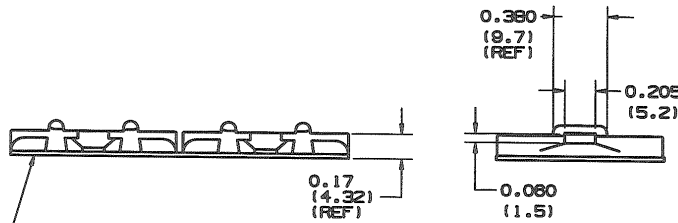
THIS COPY IS PROVIDED ON A RESTRICTED BASIS AND IS NOT TO BE USED IN ANY WAY DETRIMENTAL TO THE INTERESTS OF PANDUIT CORP.



NO WARRANTY, EXPRESSED OR IMPLIED, IS MADE BY PANDUIT WITH RESPECT TO ADHESIVE BOND PERFORMANCE. AMONG OTHER THINGS, THE CONDITIONS UNDER WHICH THESE MOUNTS MAY BE APPLIED AND/OR THE SURFACE TO WHICH THEY MAY BE APPLIED ARE BEYOND PANDUIT'S CONTROL.

PANDUIT PART NUMBER*	WEIGHT lbs/100 pcs (g)/100 pcs	USE WITH THESE CABLE TIE CROSS-SECTIONS
ABMS-A	0.42 (189)	M, I, S

TO APPLY ADHESIVE MOUNT:
 1) REMOVE PROTECTIVE LINER.
 2) PLACE IN DESIRED LOCATION.
 3) APPLY PRESSURE TO TOP SURFACE OF MOUNT.



NOTES:

- *1) SEE CURRENT PRICE SHEET FOR PART NUMBER SUFFIX DESIGNATIONS FOR PACKAGE SIZE.
- 2) MOUNTS PROVIDED IN STRIPS OF TWO FOR EASY REMOVAL OF PROTECTIVE LINER.
- 3) MOUNTS WILL BE ORIENTED IN LINE WITH, OR 90° FROM EACH OTHER AS ILLUSTRATED ABOVE.

ADHESIVE BACKING:
 PRESSURE SENSITIVE FOAM TAPE
 0.04 (1.0) THICK WITH PROTECTIVE
 LINER. MOUNT IS DESIGNED TO
 SUPPORT 0.6 lb. (272g.) MAX. WEIGHT
 ON A CLEAN, DRY, SMOOTH, GREASE-FREE
 SURFACE.

DIMENSIONS IN BRACKETS ARE METRIC [mm]
 CAD FILENAME/LAYER: G00239GE_DC_ABMS_01

PANDUIT CORP. TINLEY PARK, ILLINOIS

ABMS-A
 ADHESIVE BACKED MOUNT

UNLESS OTHERWISE SPECIFIED,
 DIMENSIONAL TOLERANCES ARE:
 (.X) ±0.05 (1.3) (.XXX) ±0.010 (0.25)
 (.XX) ±0.02 (0.5) ANGLES ±5°

UNLESS OTHERWISE SPECIFIED,
 ALL DIMENSIONS ARE GIVEN
 IN INCHES, THIRD ANGLE PROJECTION.

REV	DATE	BY	CHK	DESCRIPTION	EDN	R	CUST	SUP	DRWN BY	DATE	MAT'L	SCALE	DWG NO.	STD
1	2/7/05	JAD	N/A	.205 WAS .200 CORRECTION: .17 WAS .250	G80239GE	1			CSM	2-11-09	NYLON 6/6	NONE	G80239GE	A
R	2-11-09	CSM		INITIAL RELEASE	G80239GE	R								