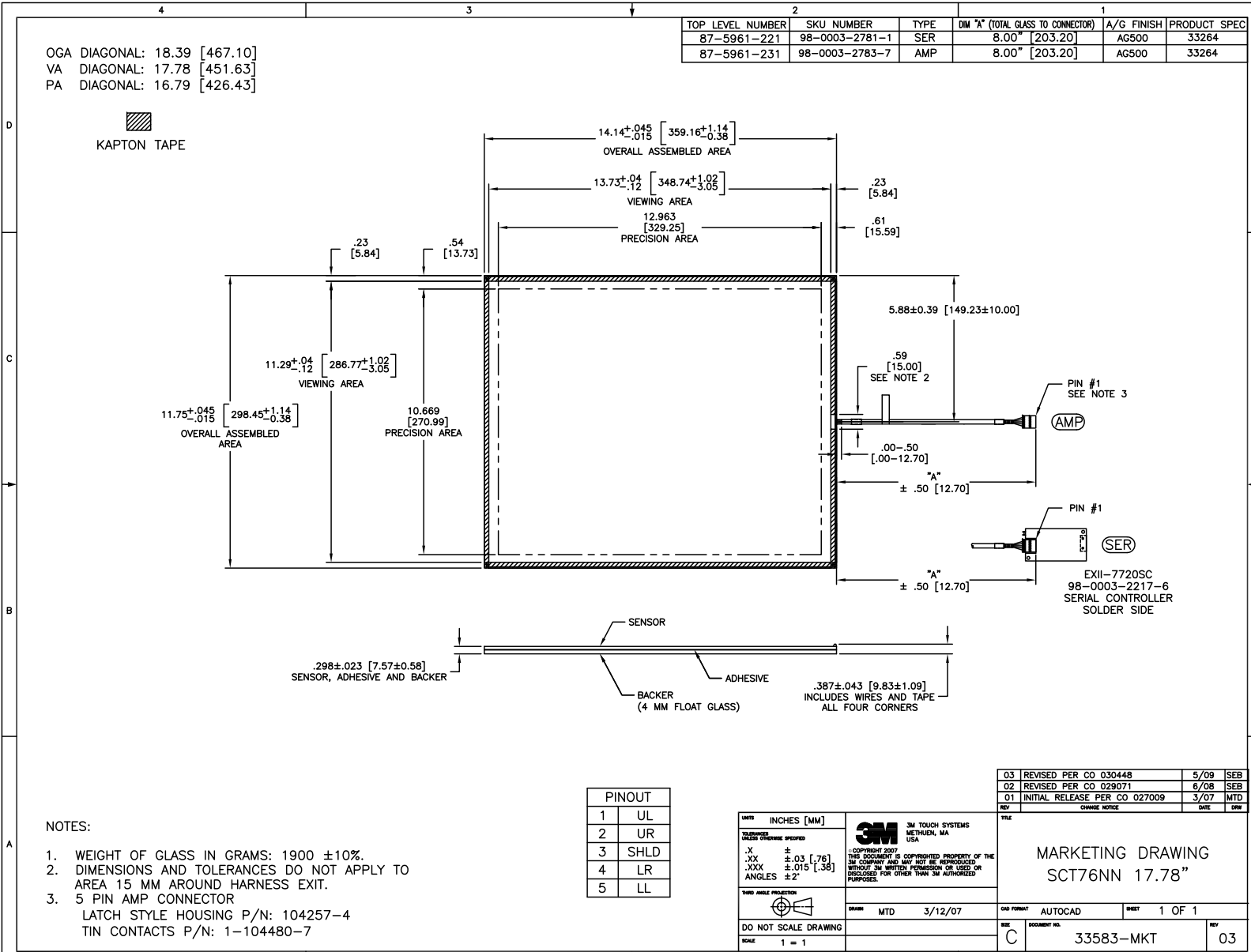


OGA DIAGONAL: 18.39 [467.10]  
 VA DIAGONAL: 17.78 [451.63]  
 PA DIAGONAL: 16.79 [426.43]

TOP LEVEL NUMBER	SKU NUMBER	TYPE	DIM "A" (TOTAL GLASS TO CONNECTOR)	A/G FINISH	PRODUCT SPEC
87-5961-221	98-0003-2781-1	SER	8.00" [203.20]	AG500	33264
87-5961-231	98-0003-2783-7	AMP	8.00" [203.20]	AG500	33264



NOTES:

1. WEIGHT OF GLASS IN GRAMS: 1900 ± 10%.
2. DIMENSIONS AND TOLERANCES DO NOT APPLY TO AREA 15 MM AROUND HARNESS EXIT.
3. 5 PIN AMP CONNECTOR LATCH STYLE HOUSING P/N: 104257-4  
TIN CONTACTS P/N: 1-104480-7

PINOUT	
1	UL
2	UR
3	SHLD
4	LR
5	LL

UNITS	INCHES [MM]
.X	± .03 [.76]
.XX	± .015 [.38]
.XXX	± 2°

**3M** 3M TOUCH SYSTEMS  
 METHUEN, MA  
 USA

© COPYRIGHT 2007  
 THIS DOCUMENT IS COPYRIGHTED PROPERTY OF THE  
 3M COMPANY AND MAY NOT BE REPRODUCED  
 WITHOUT WRITTEN PERMISSION OR USED OR  
 DISCLOSED FOR OTHER THAN 3M AUTHORIZED  
 PURPOSES.

DATE: MTD 3/12/07

DO NOT SCALE DRAWING

SCALE: 1 = 1

REV	CHANGE NOTICE	DATE	DRW
03	REVISED PER CO 030448	5/09	SEB
02	REVISED PER CO 029071	6/08	SEB
01	INITIAL RELEASE PER CO 027009	3/07	MTD

TITLE: MARKETING DRAWING  
 SCT76NN 17.78"

DATE: MTD 3/12/07

DOC FORMAT: AUTOCAD

SHEET: 1 OF 1

REV: 03

DOCUMENT NO.: 33583-MKT