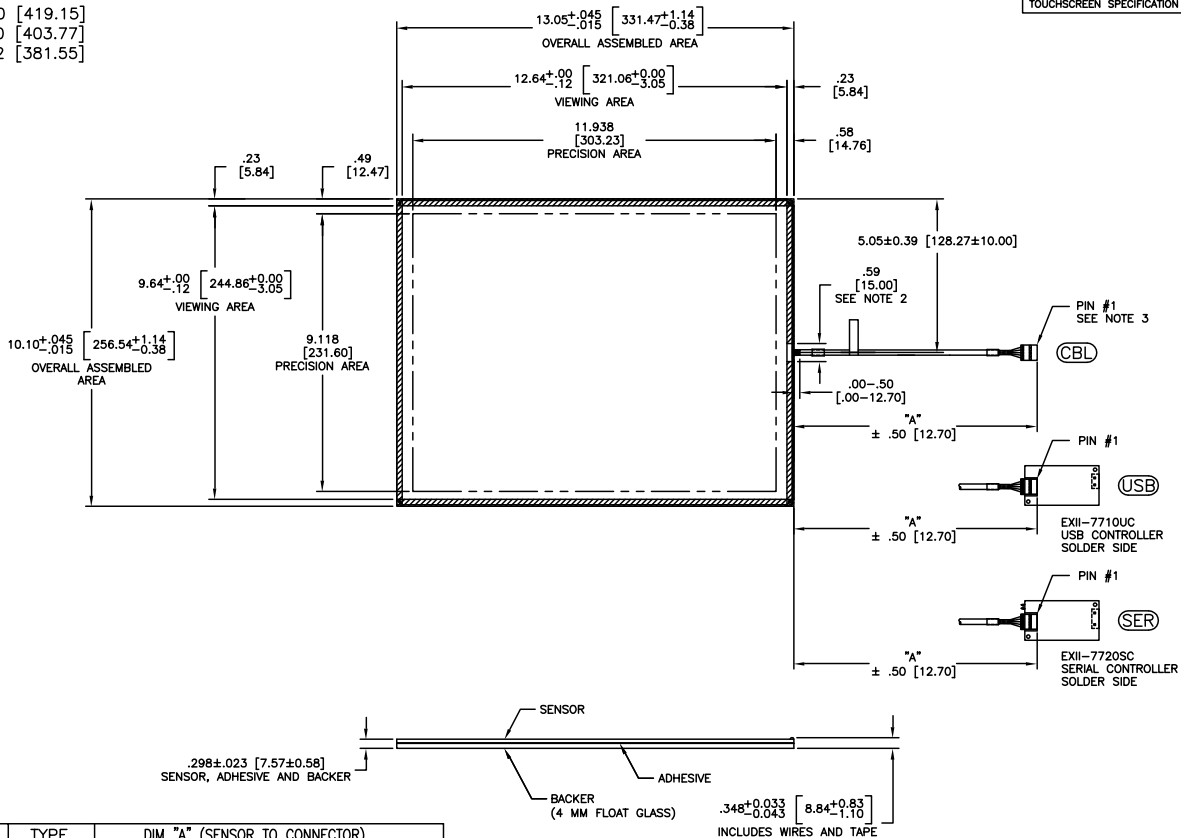


THIS PRODUCT IS MANUFACTURED IN ACCORDANCE WITH THE CURRENT TOUCHTOUCH II CAPACITIVE TOUCHSCREEN SPECIFICATION (DOCUMENT 33264).

OGA DIAGONAL: 16.50 [419.15]
 VA DIAGONAL: 15.90 [403.77]
 PA DIAGONAL: 15.02 [381.55]

 KAPTON TAPE




TOP LEVEL NUMBER	TYPE	DIM "A" (SENSOR TO CONNECTOR)
87-4061-211	USB	8.00" [203.20]
87-4061-221	SER	8.00" [203.20]
87-4061-231	CBL	8.00" [203.20]

PINOUT	
1	UL
2	UR
3	SHLD
4	LR
5	LL

NOTES:

- WEIGHT OF GLASS IN GRAMS: 1504.12 ±10%.
- DIMENSIONS AND TOLERANCES DO NOT APPLY TO AREA 15 MM AROUND HARNESS EXIT.
- 5 PIN AMP CONNECTOR LATCH STYLE HOUSING P/N: 104257-4
TIN CONTACTS P/N: 1-104480-7

01	INITIAL RELEASE PER CO 027005	3/07	MTD
REV	CHANGE NOTICE	DATE	DRW
 3M TOUCH SYSTEMS METUEN, MA USA © COPYRIGHT 2007 THIS DOCUMENT IS COPYRIGHTED PROPERTY OF THE 3M COMPANY AND MAY NOT BE REPRODUCED WITHOUT 3M WRITTEN PERMISSION OR USED OR DISCLOSED FOR OTHER THAN 3M AUTHORIZED PURPOSES.			
MARKETING DRAWING 87-4061-2X1		CAD FORMAT: AUTOCAD SHEET: 1 OF 1	REV: C DOCUMENT NO.: 33577-MKT REV: 01
DATE	3/9/07	SCALE	1 = 1